



**Formula Boats Northeast**  
692 S Wellwood Ave  
Lindenhurst, NY 11757 US  
Phone: 631 574-8811

# Formula 290 Bowrider

Boat Type: Bowrider



## OVERVIEW

From stem to stern, everything about the Formula Bowrider series is designed to meet your needs and maximize your fun and relaxation on the water. This is where excellence meets sophistication, and superiority meets authenticity. The 290 Formula Bowrider is our second largest upscale sport boat, one that combines Formula prestige with your personal touch.

## SPECIFICATIONS

### Basic Information

Manufacturer:	Formula	Boat Type:	Bowrider
Model:	290 Bowrider	Hull Material:	Fiberglass
Year:	2017	Hull Type:	Deep Vee
Category:	Power		

## Dimensions & Weight

Length:	29.00 ft	Draft - max:	3 ft 4 in - 1.01 meter
LOA:	31 ft 9 in - 9.68 meter	Bridge Clearance:	8 ft 2 in - 2.49 meter
Beam:	9 ft - 2.74 meter	Dry Weight:	8950 ft
Deadrise Aft:	22.00 °		

## Tank Capacities

Fuel Tank:	112 gallons - 1 tank(s)	Holding Tank:	23 gallons - 1 tank(s)
Fresh Water Tank:	19 gallons - 1 tank(s)		

## Accommodations

Total Cabins:	-	Crew Cabins:	-
Total Berths:	-	Crew Berths:	-
Total Sleeps:	-	Crew Sleeps:	-
Total Heads:	1	Crew Heads:	-
Captains Cabin:	No		

## FEATURES

### 290 Bowrider/FX BR Standard Equipment

#### 290 Bowrider/FX BR Exterior

- NMMA Yacht/CE Certification
- Transferable 5-Year Formula Guard® Limited Protection Plan w/10-year Structural Warranty (USA only)
- Ashland Maxguard™ LE gelcoat in White or Soft White
- Imron® standard graphic in A, B or C
- Pressure-treated Perma Panel™ structural hull matrix w/foam-filled hull cavities
- Chemically bonded & thru-bolted deck-to-hull joint
- Heavy-duty PVC gunwale w/stainless insert
- Concealed fiberglass anchor locker
- 316L bow rail
- Stainless hardware & 316L welded rails
- Stainless Formula logo-cast cleats (6), fuel fill, polished engine vent trim & port lights w/screens (2)
- Continuous tinted, tempered curved-glass windshield w/stainless top frame, center walk-thru & windshield wiper
- Electric horn
- 316L stainless transom grab rail & tow eye
- Clarion® waterproof transom-mounted stereo control
- Integrated swim platform w/concealed stainless swim ladder
- Transom shower

#### 290 Bowrider/FX BR Cockpit

- Continuous molded deck & cockpit liner
- Molded fiberglass dash in Gray or Morning Sand w/Liquid Black panels, Ritchie® compass, digital depth sounder, Livorsi® illuminated instrumentation, domed w/chrome bezels, illuminated waterproof accessory rocker switches w/E-T-A® circuit breakers, auxiliary 12V outlet, tilt wheel in leather wrapped stainless & lockable under-dash storage compartment

- Livorsi chromed shifters/throttles w/in-handle outdrive trim switch
- Safety ignition tether, trim/trailer switches & Bennett tab switches w/indicators
- Clarion AM/FM/CD stereo w/waterproof dash-mounted stereo control, iPod/USB docking station, Bluetooth, six 6 1/2" speakers w/400W stereo amplification, polished stainless grilles & iPod/MP3 port
- Three dual USB charging ports – two in aft cockpit & one in bow
- 19 polished stainless drink holders
- Cockpit/swim platform blue/white LED courtesy lights w/remote control
- Weather-resistant cockpit seating featuring PreFixx® coating, Tenara® element-resistant thread, DriFast® foam & Star-Lite® XL synthetic marine panel construction
- Dual position helm & companion seats
- Modular bow seating/sunpad system w/armrests & removable seat bottoms
- Starboard gear storage locker
- Forward in-floor wakeboard/ski storage
- Color-coordinated molded wetbar w/integrated sink, Corian countertop, 30-quart Igloo cooler, trash container & integral 316L safety rail
- Demand water system w/20-gallon capacity
- Port & U-shaped aft lounge seating w/integrated storage & 17 1/2-quart Igloo® cooler
- Color-coordinated dual-height cockpit table w/Corian® top, filler cushion & four polished drink holders
- Aft-facing sun lounge w/trunk storage & fender (2 included) storage below – converts to full-length sunpad
- Fire extinguisher
- Disconnect switches for aux & start batteries
- Battery parallel emergency switch
- Stainless transom gate

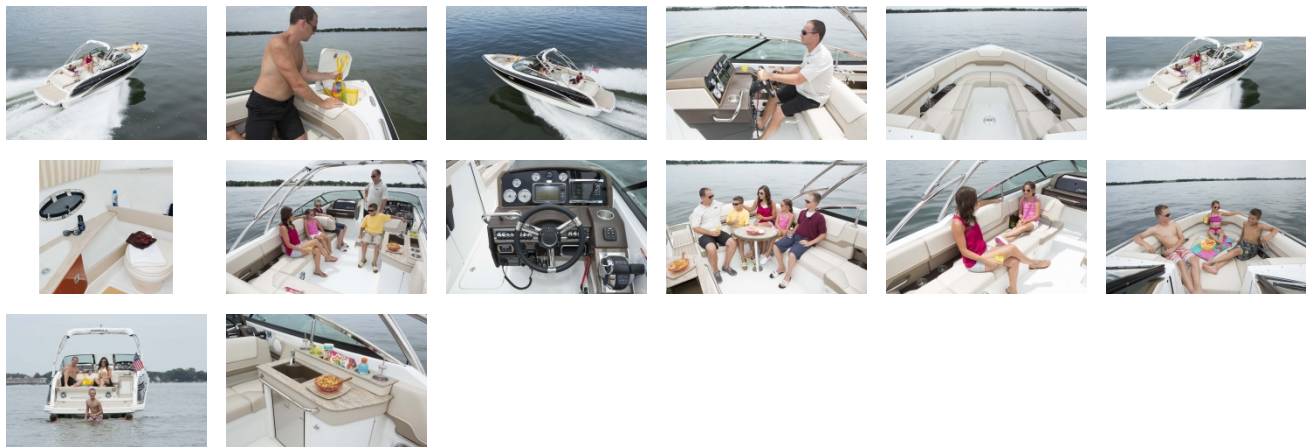
#### **290 Bowrider/FX BR Head Compartment**

- Curved, one-piece locking door
- Molded head compartment w/porcelain head unit, 23-gallon holding tank & dockside pumpout, molded vanity, sink w/faucet, Corian counter top & Light Cherry or Baltic Birch woodgrain-finish flooring
- Carbon monoxide detector

#### **290 Bowrider/FX BR Engine Room**

- Single or twin engine installation w/thru-bolted engine mounts
- Motorized hatch lift
- Courtesy lighting, fume detector & automatic fire extinguisher
- Two marine batteries w/retainers
- Galvanic corrosion protection systems
- Bilge blower, automatic bilge pump & high water alarm
- Bennett® hydraulic trim tabs
- Stainless props

GALLERY



**Formula Boats Northeast**  
692 S Wellwood Ave  
Lindenhurst, NY 11757 US  
Phone: 631 574-8811