



Formula Boats Northeast
692 S Wellwood Ave
Lindenhurst, NY 11757 US
Phone: 631 574-8811

Formula 370 Super Sport

Boat Type: Sport Cruiser



OVERVIEW

Experience the power and sophistication of a Formula Super Sport. A premier express cruiser like none other, the Formula 370 Super Sport is not just a boat designed to go somewhere. It is a boat designed to go everywhere.

SPECIFICATIONS

Basic Information

Manufacturer:	Formula	Boat Type:	Sport Cruiser
Model:	370 Super Sport	Hull Material:	Ferro Cement
Year:	2017	Hull Type:	Deep Vee
Category:	Power		

Dimensions & Weight

Length:	37.00 ft	Draft - max:	3 ft - 0.91 meter
LOA:	38 ft 6 in - 11.73 meter	Bridge Clearance:	10 ft - 3.05 meter
Beam:	10 ft 9 in - 3.28 meter	Dry Weight:	15100 ft
Deadrise Aft:	21.00 °		

Tank Capacities

Fuel Tank:	218 gallons - 1 tank(s)	Holding Tank:	50 gallons - 1 tank(s)
Fresh Water Tank:	43 gallons - 1 tank(s)		

Accommodations

Total Cabins:	-	Crew Cabins:	-
Total Berths:	-	Crew Berths:	-
Total Sleeps:	-	Crew Sleeps:	-
Total Heads:	1	Crew Heads:	-
Captains Cabin:	No		

FEATURES

370 Super Sport/FX Standard Equipment

370 Super Sport/FX Exterior

- NMMA Yacht/CE Certification
- Transferable 5-Year Formula Guard® Limited Protection Plan w/10-year Structural Warranty (USA only)
- Ashland Maxguard™ LE gelcoat in White or Soft White
- Imron® standard graphic in A, B or C
- FAS Tech hull w/foam-filled continuous molded structural grid
- Chemically bonded & thru-bolted deck-to-hull joint
- Heavy-duty PVC gunwale w/stainless insert
- Electric windlass w/chain counter, 150' chain, polished stainless anchor, remote & freshwater anchor washdown system
- Stainless hardware & 316L welded rails
- Stainless custom Formula logo-cast cleats (12), fuel fills, polished engine vent trim, polished Bomar® deck venting hatches w/screens (4) & polished port lights w/screens (6)
- Nonskid foredeck center walkway
- Tinted, tempered curved-glass windshield w/stainless top frame, center walk-thru & windshield wiper
- Radar arch w/mast light, two 6 1/2" speakers w/polished stainless grilles & white air horn
- Clarion® waterproof transom-mounted stereo control & two transom-mounted 6 1/2" speakers w/polished stainless grilles
- Integrated swim platform w/concealed stainless swim ladder & pull-up cleats
- Transom shower w/hot & cold controls
- 120V shorepower w/fail-safe galvanic isolator & two 30-amp cords
- Polished stainless shorepower, cable TV, telephone inlets & chrome-finished city water inlet

370 Super Sport/FX Cockpit

- Continuous molded deck & cockpit liner
- Molded deck access steps w/316L stainless handrail
- Molded fiberglass dash in Gray or Morning Sand w/Liquid Black panels, Ritchie® compass, Raymarine® e7D GPS widescreen color chartplotter w/depth sounder, illuminated waterproof accessory rocker switches w/E-T-A® circuit breakers, auxiliary 12V outlet, tilt wheel in leather wrapped stainless & lockable under-dash storage compartment
- Mercury DTS w/SmartCraft VesselView™ or Volvo EVC system w/7" engine display
- Safety ignition tether & Bennett tab switches w/indicators
- Clarion dash-mounted stereo control, iPod/MP3 port, two 6 1/2" speakers w/polished stainless grilles, 600W stereo amplification & subwoofer
- Two dual USB charging ports
- 12 polished stainless drink holders
- Cockpit/swim platform blue/white LED courtesy lights w/remote control
- Integral 316L safety rails
- Weather-resistant cockpit seating featuring PreFixx® coating, Tenara® element-resistant thread, DriFast® foam & Star-Lite® XL synthetic marine panel construction
- Dual position helm & companion seats
- Color-coordinated molded wetbar w/sink, Corian countertop, 120V/12V pullout cockpit refrigerator w/stainless front, 17 1/2?-quart Igloo cooler, trash container, 120V GFCI outlet & fire extinguisher
- Port side & U-shaped aft lounge w/storage
- Color-coordinated dual-height cockpit tables w/Corian® tops & filler cushions
- Aft-facing sun lounge w/tables, cushion & fender (4 included) storage below – motorized conversion to full-length sunpad
- Demand water system w/43-gallon capacity
- Disconnect switches for aux & start batteries
- Battery parallel emergency switch
- Custom patterned cockpit carpet
- Pneumatic-assist transom door
- Bimini top, front & side curtains w/easy-mount zippers & extended aft enclosure in color-coordinated non-fading Sunbrella® fabric w/Seamark™ vinyl undercoating

370 Super Sport/FX Cabin

- Sliding/locking cabin door
- Solid wood cabin entry steps
- Light Cherry or Baltic Birch woodgrain-finish flooring throughout cabin
- Ultraleather™ lounge w/Ultr suede lumbar, dual-height, high-gloss Bourbon Cherry, Ash or Wenge wood tables & filler cushions
- Custom décor pillows & draperies
- In-floor table/filler cushion storage
- Entertainment center in high-gloss Bourbon Cherry, Ash or Wenge finish w/Corian countertop & 26" LCD HDTV, Blu-ray player w/WiFi & dockside access cord
- 16,000 BTU reverse cycle air conditioner w/digital control
- Illuminated 210V & 12V electrical panels
- Cedar-lined hanging locker w/automatic light
- Clarion® AM/FM/CD stereo w/iPod/USB docking station, Bluetooth & two 6 1/2" speakers
- Subscription-ready Sirius™ Satellite Radio
- Aft cabin w/queen-size Sensus® memory foam bed, pillow shams, full width storage, reading light & 120V & cable outlets
- Complete galley in high-gloss Bourbon Cherry, Ash or Wenge finish w/storage & hardwood dovetailed drawers, full Corian countertop, blue LED-lit cabinet showcase w/tempered stemware & tumblers, 120V/12V stainless refrigerator, polished stainless sink, concealed electric stove w/safety switch, microwave, Krups® blender,

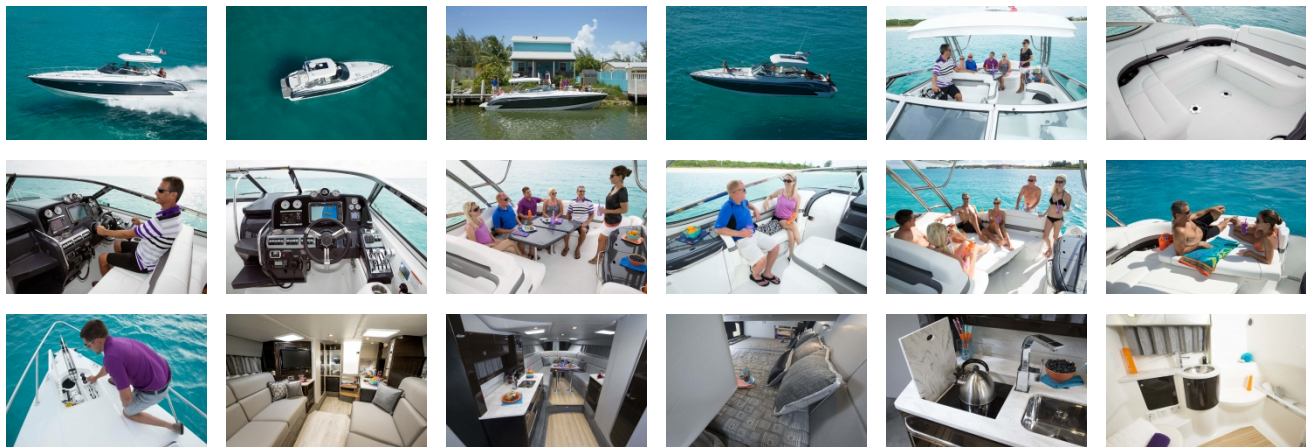
concealed trash, water level gauge & fire extinguisher

- 120V water heater w/heat exchanger
- Molded private head compartment w/vanity, high-gloss Bourbon Cherry, Ash or Wenge finish lower doors, Corian countertop, polished stainless sink w/swivel faucet, porcelain Flush and Forget® VacuFlush® head w/50-gallon tank & dockside pumpout, separate shower area w/molded seat, exhaust fan & night light
- Built-in WalVac® sweeper system
- Automatic cabin bilge pump w/high water alarm
- Carbon monoxide detectors

370 Super Sport/FX Engine Room

- Twin engine installation w/thru-bolted engine mounts
- Motorized hatch lift
- Courtesy lighting, fume detector & automatic fire extinguisher
- Twin start & aux batteries w/retainers & 80-amp battery charger
- Galvanic corrosion protection systems
- Bilge blowers, automatic bilge pumps & high water alarm
- Bennett hydraulic trim tabs
- 7.5 KW/120V Kohler® low-CO gas generator w/battery or 8.5 KW/120V Kohler® diesel generator w/sound shield & battery
- Stainless (gas) or Nibral (diesel) props

GALLERY



Formula Boats Northeast
692 S Wellwood Ave
Lindenhurst, NY 11757 US
Phone: 631 574-8811