



Formula Boats Northeast
692 S Wellwood Ave
Lindenhurst, NY 11757 US
Phone: 631 574-8811

Formula 37 Performance Cruiser

Boat Type: Sport Cruiser



OVERVIEW

From stem to stern, everything about your Formula Performance Cruiser is designed to meet your needs and maximize your fun and relaxation on the water. The Formula 37 Performance Cruiser is where excellence meets sophistication and superiority meets authenticity. It's time to board your very own dream boat, kick back and enjoy an outing with family or friends.

SPECIFICATIONS

Basic Information

Manufacturer:	Formula	Boat Type:	Sport Cruiser
Model:	37 Performance Cruiser	Hull Material:	Fiberglass
Year:	2017	Hull Type:	Deep Vee
Category:	Power		

Dimensions & Weight

Length:	37.00 ft	Draft - max:	2 ft 10 in - 0.86 meter
LOA:	38 ft 5 in - 11.71 meter	Bridge Clearance:	15 ft 7 in - 4.75 meter
Beam:	12 ft - 3.66 meter	Dry Weight:	17500 ft
Deadrise Aft:	18.00 °		

Tank Capacities

Fuel Tank:	212 gallons - 1 tank(s)	Holding Tank:	55 gallons - 1 tank(s)
Fresh Water Tank:	57 gallons - 1 tank(s)		

Accommodations

Total Cabins:	-	Crew Cabins:	-
Total Berths:	-	Crew Berths:	-
Total Sleeps:	-	Crew Sleeps:	-
Total Heads:	1	Crew Heads:	-
Captains Cabin:	No		

FEATURES

37 Performance Cruiser Standard Equipment

37 Performance Cruiser Exterior

- NMMA Yacht/CE Certification
- Transferable 5-Year Formula Guard® Limited Protection Plan w/10-year Structural Warranty (USA only)
- Ashland Maxguard™ LE gelcoat in White or Soft White
- Imron® standard graphic in A or B
- Pressure-treated Perma Panel™ structural hull matrix
- Foam-filled hull cavities
- Chemically bonded & thru-bolted deck-to-hull joint
- Heavy-duty PVC gunwale w/stainless insert
- Integrated bow platform
- Electric windlass w/chain counter, 200' chain, polished stainless anchor, remote control & freshwater anchor washdown system
- Concealed anchor davit w/fiberglass chain locker
- Polished remote-control searchlight
- Stainless hardware & 316L welded rails
- Stainless custom Formula logo-cast cleats (10), fuel fills, forward Bomar cabin venting hatches w/integrated OceanAir® rollout SKYscreen & privacy shade (3), polished port lights w/screens (6) & oversized HarbourView® portlight w/screen
- Nonskid foredeck center walkway & walk-around
- Two cockpit-coordinated vinyl deck sunpads w/adjustable chaise backrests, DriFast® foam & 316L rails
- Tinted, tempered curved-glass windshield w/center walk-thru, polished stainless frame & windshield wipers
- Radar arch w/mast light & white air horn
- Clarion® waterproof transom-mounted stereo control
- Extended integrated swim platform w/concealed stainless swim ladder & pull-up cleats
- Transom shower w/hot & cold controls

- Molded transom trunk w/pneumatic lifts, fender storage, four fenders, storage for cockpit tables & cushions
- 120V shorepower w/fail-safe galvanic isolator & two 30-amp cords
- Polished stainless shorepower, cable TV & phone inlets & chrome-finished city water inlet

37 Performance Cruiser Cockpit

- Continuous molded deck & cockpit liner
- Molded in-dash forward deck access steps w/316L stainless handrail
- Molded fiberglass dash in Gray or Morning Sand w/high gloss Dark Woodgrain or Charcoal Woodgrain dash panels, Ritchie® compass, Raymarine® e7D widescreen color chartplotter w/digital depth sounder, illuminated waterproof accessory rocker switches w/E-T-A® circuit breakers, auxiliary 12V outlet, tilt wheel in leather wrapped stainless & lockable under-dash storage compartment
- Mercury DTS w/SmartCraft™ VesselView™ or Volvo EVC system w/7" engine display
- Electronic shift & throttle controls
- Bennett® trim tab switches & indicators
- Clarion® dash-mounted stereo control, six 6 1/2" speakers w/polished stainless grilles, 200W amplification, 200W cockpit subwoofer & iPod™/MP3 port
- Two dual USB charging ports
- 15 polished stainless drink holders
- Cockpit/swim platform blue/white LED courtesy lights w/remote control
- Integral 316L safety rails
- Weather-resistant cockpit seating featuring PreFixx® coating, Tenara® element-resistant thread, DriFast® foam & Star-Lite® XL synthetic marine panel construction
- Dual position twin command seating
- Port & aft U-shaped lounge seating w/fiberglass-lined storage, two color-coordinated dual-height cockpit tables w/Corian tops & sunpad inserts
- Color-coordinated molded wetbar w/integrated sink, Corian countertop, 120V/12V pullout refrigerator w/stainless front, trash container, 316L safety rail, 120V GFCI outlet & fire extinguisher
- Disconnect switch for auxiliary 12V power
- Custom patterned cockpit carpet
- Pneumatic-assist transom door
- Bimini top, front & side curtains w/easy-mount zippers & extended aft enclosure in color-coordinated non-fading Sunbrella® fabric w/Seamark™ vinyl undercoating

37 Performance Cruiser Cabin

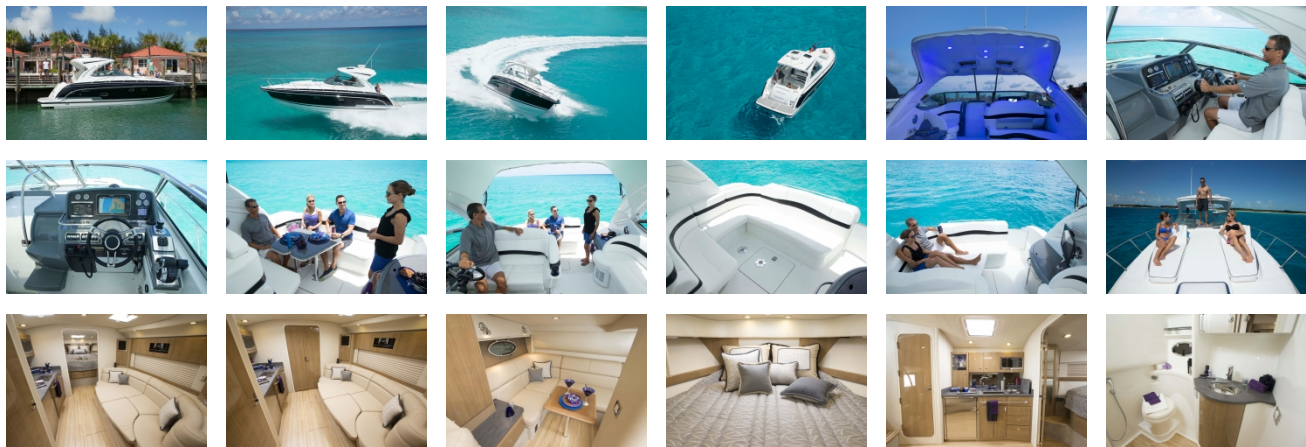
- Sliding/locking cabin door
- Solid wood cabin entry steps
- Light Cherry or Baltic Birch woodgrain-finish flooring throughout cabin
- Private forward stateroom w/double high-gloss Bourbon Cherry, Ash or Wenge finish doors, centerline bed w/Sensus® memory foam mattress, pillow shams, storage below & individual reading lights
- Two cedar-lined stateroom hanging lockers w/automatic lights
- Forward cabin 19" LED/LCD HDTV/DVD combo player
- Curved Ultraleather™ sofa seating w/Ultrasede® lumbar, dual-height, high-gloss Bourbon Cherry, Ash or Wenge wood dining table & filler cushions
- Custom décor pillows
- OceanAir Skysol pleated blind system in galley, dinette, forward stateroom & aft cabin
- Cabinetry in high-gloss Bourbon Cherry, Ash or Wenge finish
- 18,000 BTU reverse cycle air conditioner w/digital climate control
- Illuminated 120V & 12V electrical panels
- 32" LED/LCD HDTV/DVD w/Blu-ray Disc player & WiFi in main salon w/dockside access cord

- Clarion® AM/FM/CD stereo w/iPod/USB docking station, Bluetooth & four 6 1/2" speakers w/200W amplification & 8" subwoofer w/100W amplification
- Subscription-ready Sirius™ Satellite Radio
- Ultraleather aft cabin lounge/double berth w/Ultr suede lumbar, removeable high-gloss Bourbon Cherry, Ash or Wenge wood cocktail table, filler cushion & privacy enclosure
- Cedar-lined aft cabin hanging locker w/automatic light
- Built-in WalVac® sweeper system w/easy access wall plate
- In-floor storage compartments
- Complete galley in high-gloss Bourbon Cherry, Ash or Wenge finish w/storage & hardwood dovetailed drawers, full Corian countertop, blue LED-lit cabinet showcase w/tempered stemware & tumblers, beverage center w/Krups® coffee maker, polished stainless sink, concealed 2-burner electric stove w/safety switch, 120V/12V stainless refrigerator, polished stainless microwave oven, concealed in-counter trash container, water level gauge & fire extinguisher
- Demand water system w/57-gallon capacity & one-point water fill for freshwater tank and/or city water
- 120V water heater w/heat exchanger
- Molded private head compartment w/molded vanity, lower door in high-gloss Bourbon Cherry, Ash or Wenge finish, Corian counter, polished stainless sink, Light Cherry or Baltic Birch woodgrain flooring, VacuFlush® head w/55-gallon holding tank & dockside pumpout, separate shower stall w/hinged acrylic door & exhaust fan
- Automatic cabin bilge pump w/high water alarm
- Three carbon monoxide detectors

37 Performance Cruiser Engine Room

- Twin engine installation w/thru-bolted engine mounts
- Motorized hatch lift, courtesy lighting, fume detector & automatic fire extinguisher
- Integrated quick-access engine hatch
- Twin start & aux batteries w/retainers & 60-amp battery charger
- Disconnect switches for starting batteries
- Battery parallel emergency switch
- Galvanic corrosion protection systems
- Bilge blowers, automatic bilge pump & high water alarm
- Bennett hydraulic trim tabs
- 7.5 KW/120V Kohler® low-CO emissions gas generator w/battery or 8.5KW/120V Kohler® diesel generator w/sound shield & battery
- Stainless (gas) or Nibral (diesel) props

GALLERY



Formula Boats Northeast
692 S Wellwood Ave
Lindenhurst, NY 11757 US
Phone: 631 574-8811