



Formula Boats Northeast
692 S Wellwood Ave
Lindenhurst, NY 11757 US
Phone: 631 574-8811

Formula 292 FASTech

Boat Type: Cruiser



OVERVIEW

Excitement. In life, and on the water. It's part of what you do and how you live. That's why we offer the FAS3TECH series of pure powerboats. Sleek, muscular and breathtaking, the Formula 292 FAS3TECH is the latest, go-fast reflection of the Formula offshore racing heritage.

SPECIFICATIONS

Basic Information

Manufacturer:	Formula	Boat Type:	Cruiser
Model:	292 FASTech	Hull Material:	Fiberglass
Year:	2017	Hull Type:	Deep Vee
Category:	Power		

Dimensions & Weight

Length:	29.00 ft	Draft - max:	2 ft 9 in - 0.84 meter
LOA:	29 ft 2 in - 8.89 meter	Bridge Clearance:	4 ft 11 in - 1.5 meter
Beam:	8 ft 3 in - 2.51 meter	Dry Weight:	7000 ft
Deadrise Aft:	24.00 °		

Tank Capacities

Fuel Tank:	97 gallons - 1 tank(s)	Holding Tank:	3 gallons - 1 tank(s)
Fresh Water Tank:	19 gallons - 1 tank(s)		

Accommodations

Total Cabins:	-	Crew Cabins:	-
Total Berths:	-	Crew Berths:	-
Total Sleeps:	-	Crew Sleeps:	-
Total Heads:	-	Crew Heads:	-
Captains Cabin:	No		

FEATURES

292 FASTech Standard Equipment

292 FASTech Exterior

- NMMA Yacht/CE Certification
- Transferable 5-year Formula Guard® Limited Protection Plan w/10-year Structural Warranty (USA only)
- Ashland MaxGuard™ LE gelcoat in White
- Silver Series three-color Imron® design #1, #2 or #3 in Antigua, Bayport or Stealth
- FASTech hull
- Foam-filled continuous molded structural grid
- Chemically bonded & thru-bolted deck-to-hull joint
- Heavy-duty PVC gunwale w/stainless insert
- Concealed fiberglass anchor locker
- Stainless hardware & 316L welded rails
- Stainless fuel fill
- Two Bomar® cabin venting hatches w/screens
- Tinted, tempered curved-glass windshield
- Concealed air horn
- Clarion® waterproof transom-mounted stereo volume control
- Integrated swim platform w/concealed stainless swim ladder

292 FASTech Cockpit

- Continuous molded deck & cockpit liner
- Molded fiberglass dash in Silver w/Carbon-fiber composite dash panels in black, blue, red or silver, Ritchie® compass, digital depth sounder, Livorsi® Oversized Mega Series backlit instrumentation w/polished stainless bezels, tilt steering wheel w/blue, red or silver accent inserts & illuminated waterproof accessory rocker switches w/E-T-A® circuit breakers
- Livorsi chromed shifters/throttles w/in-handle outdrive trim switch

- Fingertip trim override switches
- Safety ignition tether
- Clarion waterproof dash-mounted stereo control, iPod™/MP3 port & four 6 1/2" JL Audio® blue LED lighted chrome-finished speakers w/600W amplification & 200W cockpit subwoofer
- Port dash locker w/vanity mirror & dual USB charging port
- Two auxiliary 12V outlets
- Blue LED lighted polished stainless drink holders
- Blue/white LED courtesy lighting
- Integral 316L stainless safety rails
- Weather-resistant cockpit seating featuring PreFixx® coating, Tenara® element-resistant thread, DriFast® foam & Star-Lite® XL synthetic marine panel construction
- McLeod® electric-assist offshore-style bolsters
- Aft lounge seating for four w/storage beneath
- Side coaming storage
- Fire extinguisher
- Custom cockpit carpet w/sculptured FASTech logo
- Battery disconnect switches for start & aux batteries
- Battery parallel emergency switch
- All-weather cockpit cover in color-coordinated non-fading Sunbrella® fabric w/SeaMark™ vinyl undercoating

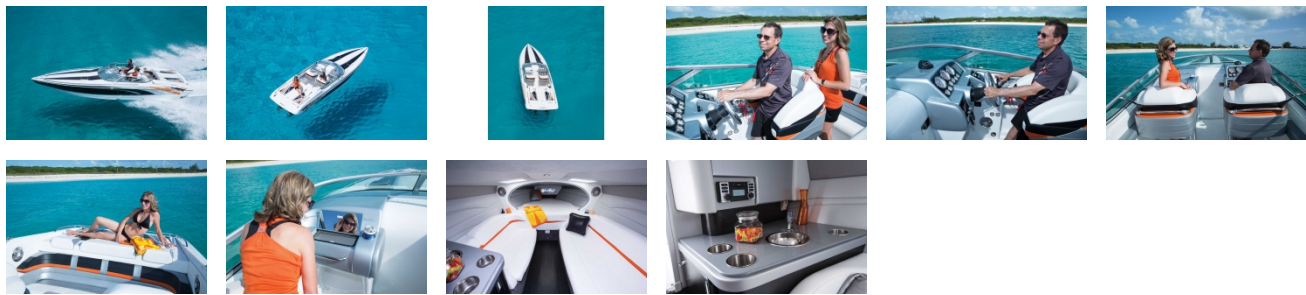
292 FASTech Cabin

- Sliding/locking cabin door
- Charcoal woodgrain-finish flooring throughout cabin
- Solid wood cabin entry step
- Ultraleather™ double bow berth
- Ultraleather lounge seating
- Décor pillows
- Entertainment center w/polished stainless sink, Corian countertop, demand water system & 25-quart Igloo® cooler
- Clarion® AM/FM/CD stereo w/iPod/USB docking station, Bluetooth & two 6 1/2" speakers
- Subscription-ready Sirius™ Satellite Radio
- Head unit w/dockside pumpout
- Carbon monoxide detector

292 FASTech Engine Room

- Twin engine installation w/thru-bolted race-style engine mounts
- Motorized hatch lift
- Storage area for optional Bimini top
- Courtesy lighting, fume detector & automatic fire extinguisher
- Two marine batteries w/retainers
- Galvanic corrosion protection systems
- Bilge blowers, automatic bilge pumps & high water alarm
- Bennett® hydraulic dual ram trim tabs
- External stainless tie bar
- Stainless lab-finished 4-blade Mercury props
- CORSA™ polished stainless exhaust system w/silencer tips

GALLERY



Formula Boats Northeast
692 S Wellwood Ave
Lindenhurst, NY 11757 US
Phone: 631 574-8811