



**Formula Boats Northeast**  
692 S Wellwood Ave  
Lindenhurst, NY 11757 US  
Phone: 631 574-8811

# Formula 430 Super Sport Crossover

Boat Type: Sport Cruiser



## OVERVIEW

Sport Crossover, a revolutionary new concept that is destined to change the performance boating experience. Formula combines the confident command of our sleek Super Sport lineup with open bow and cabin elements that spring from our unparalleled Crossover Bowrider, then incorporates the nimble versatility of a flush cockpit center console outboard. The result is the paradigm-shifting 430 SSC – a transformative adventure where boaters truly can have the best of all worlds.

Virtually every boater's preference is satisfied in the 430 SSC cockpit, from up-front exhilaration in the expansive bow to the flexible coupe design with full-width motorized glass sunroof and triple command seating, to the U-shaped lounge aft with convertible rear-facing sunpad and extended swim platform.

Add to that cabin accommodations which offer surprising amenities previously encountered only in closed bow vessels, including a convertible dinette/sleeping berth, aft stateroom with queen-size Sensus® memory foam bed, private stand-up head compartment, full galley and premium AV entertainment.

The 430 deep-V hull with FAS3Tech® multi-step design and quad outboard power delivers the swift, stable Formula

performance that is respected worldwide. Go offshore without compromise, in a vessel that so smartly balances purpose with pleasure, where every feature is on target for your needs. Make plans now to experience the best of all worlds – the Formula 430 Super Sport Crossover.

## SPECIFICATIONS

### Basic Information

Manufacturer:	Formula	Boat Type:	Sport Cruiser
Model:	430 Super Sport Crossover	Hull Material:	Fiberglass
Year:	2017	Hull Type:	Deep Vee
Category:	Power		

### Dimensions & Weight

Length:	43.00 ft	Draft - max:	3 ft 5 in - 1.04 meter
LOA:	43 ft - 13.11 meter	Bridge Clearance:	12 ft 6 in - 3.81 meter
Beam:	12 ft - 3.66 meter	Dry Weight:	25200 ft
Deadrise Aft:	21.00 °		

### Tank Capacities

Fuel Tank:	500 gallons - 1 tank(s)	Holding Tank:	43 gallons - 1 tank(s)
Fresh Water Tank:	52 gallons - 1 tank(s)		

### Accommodations

Total Cabins:	-	Crew Cabins:	-
Total Berths:	-	Crew Berths:	-
Total Sleeps:	-	Crew Sleeps:	-
Total Heads:	-	Crew Heads:	-
Captains Cabin:	No		

## FEATURES

### 430 Super Sport Crossover Standard Equipment

#### 430 Super Sport Crossover Exterior

- NMMA Yacht Certification (Pending)
- Transferable 5-Year Formula Guard® Limited Protection Plan w/10-year Structural Warranty (USA only)
- Ashland Maxguard™ LE gelcoat
- Standard graphic in A, B or C w/Axalta™ Chroma Premier® basecoat & Imron® Elite clearcoat
- FASTECH hull w/foam-filled continuous molded structural grid
- Chemically bonded & thru-bolted deck-to-hull joint
- Heavy-duty PVC gunwale w/stainless insert
- Concealed electric windlass w/digital chain counter, 200' chain, polished stainless anchor, yacht-design thru-hull stowage & freshwater anchor washdown system
- Remote-control searchlight
- Stainless hardware & 316L welded rails
- Stainless custom Formula logo-cast cleats (12), fuel fills, polished engine vent grilles, polished port lights

w/screens (2) & oversized port lights (2)

- Coupe top w/tinted, tempered windshield w/windshield wiper, port walk-thru door & sport coupe side wings w/side connectors & side vents, large, motorized coupe-top Taylor Made® glass sunroof w/Poseidon retractable sunshades and soft panels, blue LED accent lighting, dual flagstaff w/flush mount LED spreader lights, American & Formula flags & white dual air horn
- Rockford Fosgate® waterproof transom-mounted stereo control & two 6 1/2" JL Audio® blue LED lighted chrome-finished speakers
- Cockpit blue LED lighting system
- Woodgrain vinyl decking on swim platform
- Integrated swim platform w/removeable stainless swim ladder, retractable safety ladder & pull-up cleats
- 120V/240V shorepower w/fail-safe galvanic isolator & 50-amp cord w/Glendinning motorized extend/retract & storage system w/remote control
- Polished stainless shorepower & cable TV inlets, transom shower w/hot/cold controls & chrome-finished city water inlet

### **430 Super Sport Crossover Cockpit**

- Continuous molded deck & cockpit liner
- Molded composite dash in Charcoal or Mocha w/Liquid Black panels, Ritchie® compass, Raymarine® twin eS128 GPS widescreen color chartplotters w/digital depth sounder, illuminated waterproof accessory rocker switches, E--A® circuit breakers, auxiliary 12V outlet, dual USB charging port, tilt wheel in leather wrapped stainless & lockable dash storage compartment
- Mercury Digital Throttle & Shift (DTS) controls w/SmartCraft® VesselView®
- Mercury® Joystick Piloting for Outboard (JPO) w/Active Trim
- Digital switching w/helm-mounted dedicated Raymarine gS95 display & wireless iPad control
- Mercury® Theft Deterrent System
- VHF radio w/antenna
- Safety ignition tether & Bennett® tab switches & indicators
- Rockford Fosgate AM/FM stereo w/iPod/USB port, Bluetooth, dash-mounted stereo control w/full color display, six hardtop & four cockpit 6 1/2" JL Audio blue LED lighted chrome-finished speakers, iPod/MP3 port, 600W stereo amplification & two 200W subwoofers
- Subscription-ready Sirius™ Satellite Radio
- Four dual USB charging ports—two in aft cockpit & two in bow
- 25 polished stainless drink holders
- Cockpit/swim platform blue/white LED courtesy lights w/remote control
- Integral 316L safety rails
- Weather-resistant cockpit seating featuring Pre-Fixx® coating, Tenara® element-resistant thread, DriFast® foam & StarLite® XL synthetic marine panel construction
- Individual sit, stand or rest position triple helm & companion seats
- Powered adjustable triple helm seat footrests w/woodgrain vinyl decking tops
- Dash & helm seat multi-port ventilation system
- Pullout Yeti® Tundra® 35 cooler
- Modular bow seating/sunpad system
- Triple-wide forward facing bow seating & dual armrest w/two Corian accented drink holders
- Two powered, adjustable-height bow tables w/woodgrain vinyl decking tops & filler cushions
- Under-cushion bow storage w/trash container, twin molded-in coolers & filler cushion storage
- Bow sun shade w/stainless supports
- Dedicated acrylic wind breaker panel
- Portside gear lockers (2) w/dedicated storage for dock lines & optional TV
- Color-coordinated cockpit galley w/custom-molded sink, Corian countertop, 120V/12V pullout cockpit refrigerator w/stainless front, trash container, paper towel holder, 120V GFCI outlet & fire extinguisher

- Galley pantry w/Cuisinart blender on door
- Port side & U-shaped aft lounges w/storage
- Powered, adjustable-height cockpit table w/woodgrain vinyl decking top & filler cushion
- Aft-facing sun lounge w/multi-position backrests w/cushions & fender (4 included) storage below
- Disconnect switches for aux & start batteries
- Battery parallel emergency switches
- Woven cockpit mat
- Stainless transom gate
- Aft cockpit enclosure w/easy-mount zippers in color-coordinated non-fading Sunbrella® fabric w/Seamark™ vinyl undercoating

### **430 Super Sport Crossover Cabin**

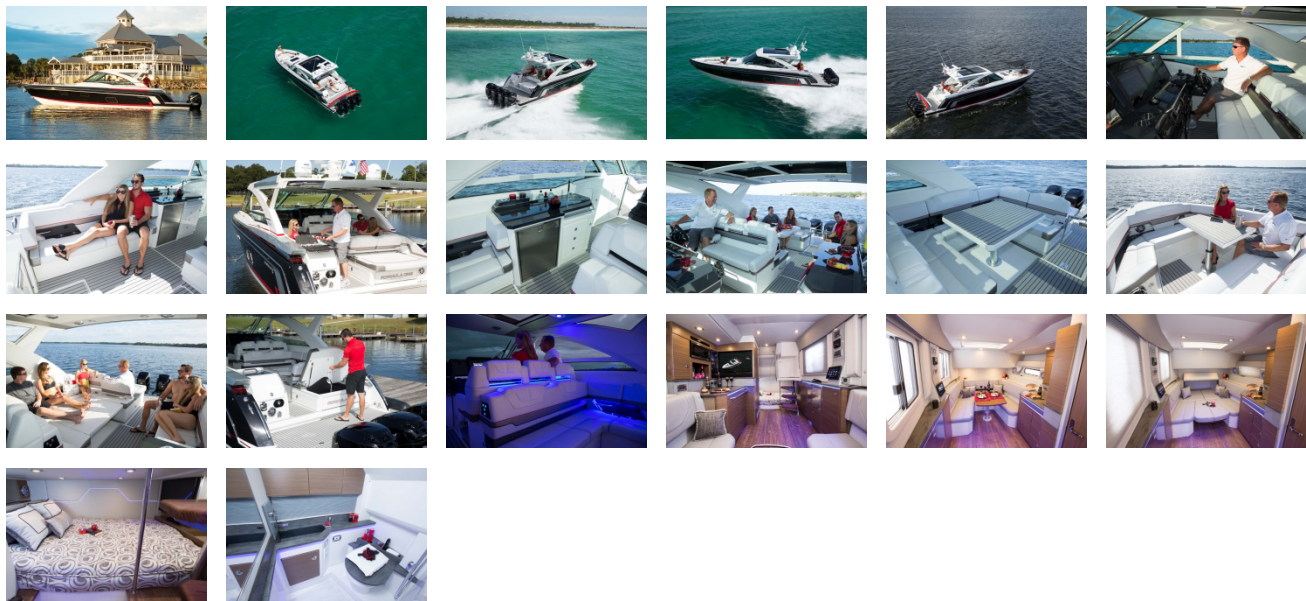
- Dash-integrated cabin door w/personal electronics storage compartment
- Solid wood cabin entry steps
- Walnut, Light Cherry, Baltic Birch or Gray Wash woodgrain-finish flooring throughout cabin
- Tinted cabin skylight with Poseidon retractable sun shade
- Blue LED & accent lighting throughout cabin
- Ultraleather™ lounge & powered adjustable-height, high-gloss Walnut, Bourbon Cherry, Ash or Wenge wood table w/filler cushions
- Custom décor pillows & draperies
- Poseidon pleated blind systems
- 16,000 BTU reverse cycle air conditioner w/digital touch control
- Illuminated 120V & 12V electrical panels
- Four 6 1/2" JL Audio blue LED lighted chrome-finished speakers
- Three dual USB charging ports – lounge (1) & aft cabin (2)
- Aft cabin w/privacy curtain, queen-size Sensus® memory foam bed, pillow shams, upholstered headboard w/storage, entertainment module/storage unit w/32" LED/LCD HDTV w/soundbar & Blu-ray player w/WiFi, 120V & LaunchPort inductive iPad charging system
- Aft cabin remote stereo volume control
- Port side storage w/pullout Vittrifigo 120V/12V stainless refrigerator, additional cupboard & drawer storage & cedar-lined hanging locker
- Electronics pylon w/Rockford Fosgate stereo remote control, air conditioning, light & table switches & LaunchPort inductive iPad charging system
- Complete galley in open-grain Walnut or high-gloss Bourbon Cherry, Ash or Wenge finish w/storage & hardwood dovetailed drawers, blue LED-lit cabinet showcase w/tempered stemware & tumblers, full Corian countertop, Corian sink w/glide-away Corian self-cover, 120V/12V stainless refrigerator, concealed electric stove w/glide-away self-cover/cutting board & safety switch, microwave, blender, concealed trash container, water level gauge & fire extinguisher
- Demand water system w/52-gallon capacity & one-point water fill for freshwater tank and/or city water
- 120V water heater
- Molded private head compartment w/vanity, open-grain Walnut or high-gloss Bourbon Cherry, Ash or Wenge finish lower doors, Corian countertop, custom-molded w/wall-mounted faucet, porcelain Flush and Forget® VacuFlush® head w/43-gallon holding tank & dockside pumpout, shower area w/Corian seat, exhaust fan & night light
- Built-in WalVac® sweeper system
- Automatic cabin bilge pump w/high water alarm
- Carbon monoxide detectors

### **430 Super Sport Crossover Equipment Room**

- Quad outboard engine installation w/thru-bolted engine mounts
- Four starting & two auxiliary marine batteries w/battery retainers

- Galvanic corrosion protection systems
- Bennett hydraulic trim tabs
- 10 KW/120V Kohler® low-CO gas generator w/sound shield & battery
- Stainless props

GALLERY



**Formula Boats Northeast**  
692 S Wellwood Ave  
Lindenhurst, NY 11757 US  
Phone: 631 574-8811