



Jefferson Beach Yacht Sales
24400 Jefferson Avenue,
St. Clair Shores, MI 48080
Phone: 866-490-5297

Viking 70 Open Bridge Convertible

Boat Type: Convertible Boat



OVERVIEW

Evolution of the Species

Viking 70 Convertible

The 70 enjoys a familial resemblance to its siblings the Viking 82 and Viking 76. The aggressively raked stem featuring better than eight feet of freeboard forward is designed to make small work out of those big head seas typically encountered offshore when hunting marlin. Likewise, the freeboard is a subtle indication of the significant headroom beneath the flush foredeck. The sheer line is pure sweetness that tapers aft to three-feet of freeboard in the cockpit for ease of releasing and tagging billfish and tuna.

A black metallic mask wraps around the front of the deckhouse seamlessly transitioning into the darkly tinted windows that terminate in teardrop fashion. The distinguished profile is further honed with molded in feature lines intercepting the curvy smoothness of the flying bridge and deckhouse.

Curves also highlight and accentuate the 208 square-foot cockpit with its observation mezzanine that provides ample stowage, multiple freezers, an insulated refrigerated drink box in the salon entrance step, plenty of drawers, and engineroom access. The lower cockpit provides a sizeable fish box, a stowage compartment and an available live well beneath the molded nonslip sole. A transom fish box/live well also is available.

The tournament proven center console helm on the flying bridge delivers acute visibility to each point of the compass. Three adjustable Murray Products helm seats with teak ladder backs are standard. Additional seating is provided with port and starboard lounges each with rod stowage below and aft facing jump seats. Ahead of the command console is a third lounge, as well as a sink, freezer and drink box cooler.

Entered through an electrically-operated sliding fiberglass door, you are greeted with an immense salon that is both inviting and elaborately appointed with designer furnishings, window treatments and custom valances. Overhead LED lighting sets the mood while natural light streams in from the salon sides and aft bulkhead windows. A day head is strategically located for convenience. Fishing rods and other gear stows handily and are readily accessible beneath the L-shape sofa to starboard. The sofa faces the entertainment center to port with a 50-inch flat screen television and Bose Lifestyle 48 system with custom surround sound. A Moritz OctoPlex screen monitor manages electrical needs at the touch of a finger.

The galley island features a granite counter, under counter refrigeration, three bar stools and is adjacent to the dinette that seats four. Forward, the galley offers the convenience of world class appliances, a walk-in pantry, plus multiple drawer and locker stowage.

Below, the four-stateroom, four-head layout utilizes space for maximum comfort and privacy, including a most spacious master suite and private access to the crew quarters via the engineroom and cockpit.

Like many Vikings, the 70 shares a refined running surface with a convex deadrise shape with sharpened waterline sections to showcase stability and sea keeping ability. The convex deadrise adds curvature and form to the hull bottom and the wide beam, which carries well aft. In addition to supplying considerable buoyancy and lift, re-entry at flank speeds will be soft enhancing a comfortable dry ride.

The 70 Convertible has chilled water air conditioning, a Delta-T engineroom ventilation system and utilize Viking's proprietary VIPER (Viking Independent Programmable Electro-hydraulic Rudder) steering, which also is used aboard the Viking 82 and Viking 76 Convertibles. The VIPER system eliminates the tie-bar for independent rudder operation to optimize response and reduce rudder drag at all throttle settings for remarkable maneuverability.

SPECIFICATIONS

Basic Information

Manufacturer:	Viking	Boat Type:	Convertible Boat
Model:	70 Open Bridge Convertible	Hull Material:	Fiberglass
Hull Type:		Category:	Power

Dimensions & Weight

Length:	70.00 ft	Draft - max:	5 ft 6 in - 1.68 meter
LOA:	70 ft 11 in - 21.62 meter	Bridge Clearance:	-
Beam:	19 ft 7 in - 5.97 meter	Dry Weight:	123876 ft
Deadrise Aft:	-		

Tank Capacities

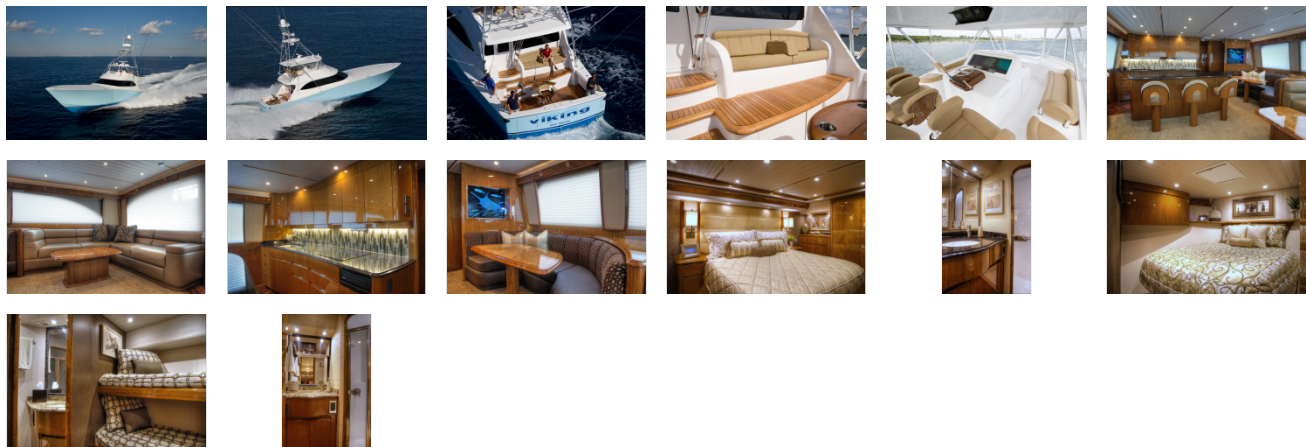
Fuel Tank:	2400 gallons - 1 tank(s)	Holding Tank:	-
Fresh Water Tank:	365 gallons - 1 tank(s)		

Accommodations

Total Cabins:	4	Crew Cabins:	-
Total Berths:	-	Crew Berths:	-
Total Sleeps:	-	Crew Sleeps:	-
Total Heads:	5	Crew Heads:	-
Captains Cabin:	No		

FEATURES

GALLERY



Jefferson Beach Yacht Sales
24400 Jefferson Avenue,
St. Clair Shores, MI 48080
Phone: 866-490-5297