



Jefferson Beach Yacht Sales
24400 Jefferson Avenue,
St. Clair Shores, MI 48080
Phone: 866-490-5297

Viking 70 Enclosed Bridge Convertible

Boat Type: Convertible Boat



OVERVIEW

Viking 70 Enclosed Bridge Convertible

Viking pioneered the enclosed bridge convertible design some 20 years ago in response to a long time Viking owner who wanted a new boat. Specifically, the owner needed the speed and handling of his high-performance Viking open bridge convertible because he liked to fish offshore. However, his wife wanted more entertaining room without going to a much larger boat that would require additional crew. With Viking's in-house design team on the job it did not take long before the concept of a fully enclosed, climate-controlled helm area became a reality and a whole new genre of convertible was born.

Fast forward to the Viking 70 Enclosed Bridge Convertible and it is apparent that we have once again taken the style to a new level of excellence, accommodation and beauty. The 70 EB, of course, shares the same sexy lines and style of the open bridge convertible. The sheer line is pure eye candy starting with a tall and aggressive rake to the stem that tapers effortlessly to a modest three feet of freeboard at the stern. A black metallic windshield mask wraps

around the front of the deckhouse and transitions seamlessly into the dark tinted windows, which terminate in a teardrop shape.

Being vertically integrated, Viking designs and manufactures 90 percent of the components that go into each yacht we build. This includes the molds, most of which are computer designed and produced from plugs cut on our two \$1 million five-axis profiler milling machines that result in flawless works of nautical art. The molds used to produce the enclosed bridge component, for example, provide a one-piece structure that is strong and beautiful. The enclosed bridge fits the yacht's superstructure like a pair of calfskin gloves, and its profile says it all.

Accommodations are more than spectacular. The air conditioned enclosed bridge is easily accessed from the cockpit mezzanine with a powder-coated custom made aluminum ladder, or the salon via a hand-finished teak staircase. For superb visibility, the helm is forward and engine instrumentation and electronics nest in a raised wraparound console covered in black ultra-leather. A Moritz OctoPlex touch screen monitor controls all of the yacht's systems and includes audible and visual alarms. Accessory switches for equipment are located above the windshield for easy reach. A stainless-steel destroyer-style wheel is matched to our exclusive VIPER proprietary programmable steering system with independent rudders for precise response and reduced drag. Take the helm and you will see just how quick and athletic this 61 plus ton yacht handles when you turn on a dime and get eleven cents change. Single lever engine controls throttle up effortlessly to speeds approaching 40 knots depending upon ambient conditions, engine selection and sea state. The adjustable Stidd helm chair is flanked with a pair of companion seats, each with built-in stowage. Aft the helm area, a raised L-shaped lounge on the starboard side affords unobstructed views and with its large teak cocktail table creates an intimate dining area, or convenient work station. A flat screen television rises from the teak cabinetry at the push of a button. A refrigerator with a built-in ice maker keeps refreshments close at hand.

A lockable door accesses the aft deck with a pod style helm for docking or fishing maneuvers. A molded fiberglass seat with a cushion top and stowage inside, powder-coated railing, quartz lights, and two hatches in the hardtop roof are among the many standard features. The 70 Enclosed Bridge Convertible also is available with our Sky Bridge custom option. This is a fully equipped third helm in a flying bridge arrangement atop the roof of the enclosed bridge. The Sky Bridge features a center console helm with a full complement of electronics, port and starboard lounge seating and an exterior powder coated aluminum ladder from the enclosed bridge deck.

The interior layout is similar to the 70 Open Bridge with a slight variation on the port side of the salon to allow for the teak staircase to the bridge. Four and five stateroom configurations are available. For everything from fun fishing to serious cruising, the Viking 70 Enclosed Bridge is the undisputed top of its class.

SPECIFICATIONS

Basic Information

| | | | |
|---------------|--------------------------------|----------------|------------------|
| Manufacturer: | Viking | Boat Type: | Convertible Boat |
| Model: | 70 Enclosed Bridge Convertible | Hull Material: | Fiberglass |
| Hull Type: | | Category: | Power |

Dimensions & Weight

| | | | |
|---------------|---------------------------|-------------------|------------------------|
| Length: | 70.00 ft | Draft - max: | 5 ft 6 in - 1.68 meter |
| LOA: | 70 ft 11 in - 21.62 meter | Bridge Clearance: | - |
| Beam: | 19 ft 7 in - 5.97 meter | Dry Weight: | 123876 ft |
| Deadrise Aft: | - | | |

Tank Capacities

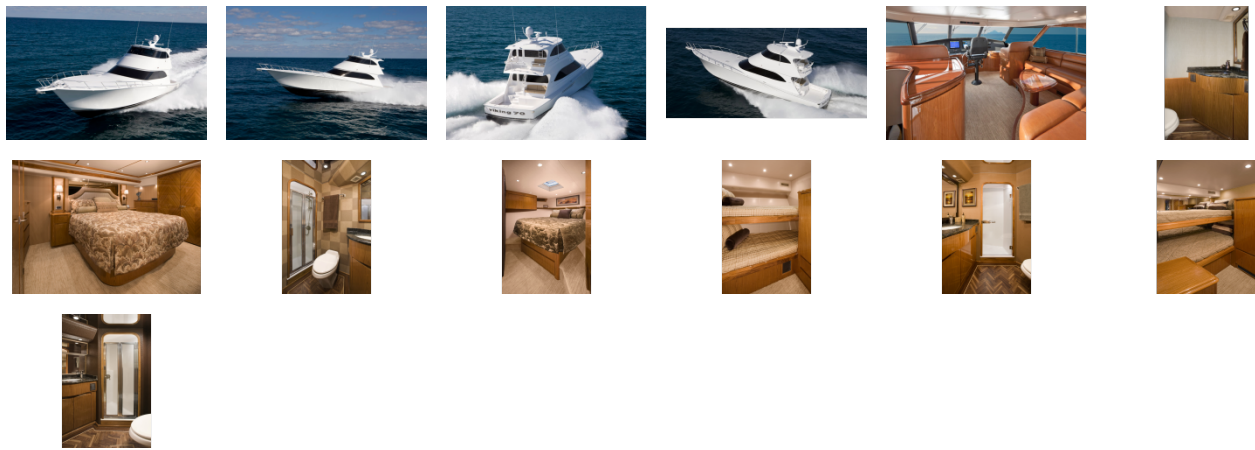
| | | | |
|-------------------|--------------------------|---------------|---|
| Fuel Tank: | 2400 gallons - 1 tank(s) | Holding Tank: | - |
| Fresh Water Tank: | 365 gallons - 1 tank(s) | | |

Accommodations

| | | | |
|-----------------|----|--------------|---|
| Total Cabins: | 4 | Crew Cabins: | - |
| Total Berths: | - | Crew Berths: | - |
| Total Sleeps: | - | Crew Sleeps: | - |
| Total Heads: | 5 | Crew Heads: | - |
| Captains Cabin: | No | | |

FEATURES

GALLERY



Jefferson Beach Yacht Sales
24400 Jefferson Avenue,
St. Clair Shores, MI 48080
Phone: 866-490-5297