



DimillosYacht Sales
1 Long Wharf, Portland, ME 04101
Phone: 207-773-7632

Back Cove 30

Boat Type: Cruiser



OVERVIEW

The style of the Down East lobster boat is closely associated with Maine's proud boat building heritage. The Back Cove 30 is a grand example of everything that makes the Down East lobster boat a work of art. She has a traditional spoon bow and her transom is gently sloped: a style that will turn heads in any harbor.

Below the surface she is modern and contemporary. A resin infused, deep-vee hull with propeller recess and standard trim tabs, offers a quiet and comfortable ride. With her standard 320 horsepower 6 cylinder diesel, she will cruise at 20 knots and top out at 25, and with optional higher horsepower, she will cruise at 25 knots. Around the docks, you will appreciate the maneuverability provided by her standard bow thruster. Her deck hardware is as rugged as the coastline she calls home.

The Back Cove 30: the perfect design for day boating or overnight cruising.

SPECIFICATIONS

Basic Information

| | | | |
|---------------|-----------|----------------|------------|
| Manufacturer: | Back Cove | Boat Type: | Cruiser |
| Model: | 30 | Hull Material: | Fiberglass |
| Year: | 2017 | Hull Type: | |
| Category: | Power | | |

Dimensions & Weight

| | | | |
|---------------|--------------------------|-------------------|-------------------------|
| Length: | 30.00 ft | Draft - max: | 2 ft 8 in - 0.81 meter |
| LOA: | 34 ft 2 in - 10.42 meter | Bridge Clearance: | 11 ft 6 in - 3.51 meter |
| Beam: | 11 ft 3 in - 3.43 meter | Dry Weight: | 12300 ft |
| Deadrise Aft: | - | | |

Tank Capacities

| | | | |
|-------------------|-------------------------|---------------|------------------------|
| Fuel Tank: | 160 gallons - 1 tank(s) | Holding Tank: | 30 gallons - 1 tank(s) |
| Fresh Water Tank: | 58 gallons - 1 tank(s) | | |

Accommodations

| | | | |
|-----------------|----|--------------|---|
| Total Cabins: | - | Crew Cabins: | - |
| Total Berths: | - | Crew Berths: | - |
| Total Sleeps: | - | Crew Sleeps: | - |
| Total Heads: | - | Crew Heads: | - |
| Captains Cabin: | No | | |

FEATURES

Hull

Back Cove white iso-npg gelcoat
Vinylester backup resin
VIP Resin Infused hull w/ PVC foam core sandwich
VIP Resin Infused foam core stringer system
Advanced prop pocket hull design
Awlgrip boot top
Molded cove stripe depression w/ "gold leaf" style stripe

Deck

Back Cove white iso-npg gelcoat w/ graystone anti-skid on walking surfaces
VIP Resin infused balsa core sandwich structure
Mooring cleats forward, aft and spring line cleats. Aft cleats are pull-up style
SS anchor roller
Anchor locker w/ ground tackle storage
Running lights (LED)
Teak accent stripe on cabin side
Custom 1-1/4" 316L stainless steel perimeter rail
SS handrails on hard top, port and starboard

Compressed air horn on hardtop (mast opt.)
(4) opening Port lights w/ insect screens
Port & starboard molded steps leading to side & fore deck
Molded quarter seating in cockpit w/ storage, port and starboard
Transom door on centerline
Swim platform w/ SS under-mount swim ladder
Hot and cold cockpit shower
Self draining cockpit
Pop-up fender cleats on cockpit coamings

Mechanical Systems

Yanmar 8L V320 mhp engine and Kanzaki marine gear
1.5" Aquamet shaft (1.75" w/ optional engines)
4 Blade NiBrAl propeller
PSS Dripless shaft log
Binnacle mount single lever engine control
Engine instruments w/ alarms and hour meter
Internal sea strainer
160 gallon fuel tank w/ 2" fill
Racor Fuel Filter
6" Exhaust w/ two stage horizontal muffler
Electric actuated trim tabs port and starboard w/ helm controller
SeaStar hydraulic steering w/ tilting helm pump
SidePower bow thruster w/ joy stick control (SE40i)
Hot and Cold pressurized water system
8 gallon hot water heater w/ heat exchanger
Marelon sea valves on underwater thru hulls
Automatic Fireboy extinguisher system w/ manual back-up

Electrical Systems

AC and DC control panels with polarity indicator
DC system battery management switching
DC breakers for electronics
12V outlet at helm and in cabin
Emergency cross over switch / ACR
120V AC 30 amp shore power w/ 50 foot cord set
AC shore power system ELCI protected
Galvanic isolator
GFI protected 120V circuits
Battery Charger
(2) 31 AGM house battery
(2) Group 31 AGM engine start battery
(2) 12VDC bilge pumps
Bonding system w/ zinc transom anode
Engine room lighting (2) w/ bezel switches
Cockpit courtesy lights switched at transom door and helm
Overhead LED cabin lights, individually bezel switched
Reading lights in berth area
Overhead bi-color LED helm deck light w/ switch

Head / Sanitary Systems

Built-in vanity w/ sink and storage
Stainless steel opening port w/ insect screen and shade
Cherry framed mirror
Solid surface countertop
Pull out single lever faucet / shower
Shower sump and pump system w/ overboard discharge
Standard size fresh water electric MSD with holding tank
Holding tank monitor level
Macerator for holding tank overboard discharge as permitted
Holding tank pump out fitting on deck
Sealed overhead lighting w/ bezel switch
Powered exhaust fan (12V)
Fresh water tank level gauge

Helm Deck

Clear anodized aluminum windows w/ opening windows port, starboard and center.
(3) windshield wipers w/ fresh water washer system
Lewmar sliding hatch w/ OCEANair Skyscreen
Compass, illuminated
Arrigoni helm seat (Choose white or tan vinyl)
White translucent acrylic companionway slider w/ lockable latch
Raised L-settee seating aft of helmsman
Mates bench seat to port, removes to face aft
Raised settee to port w/ backrest converts to berth

Galley

Alcohol / 120V single burner stove w/ cover
SS front loading AC/DC fridge
Galley sink with single lever faucet & drop in cover
Solid surface countertop
Countertop cabinet storage
Built-in microwave
Drawer and doors storage below counter

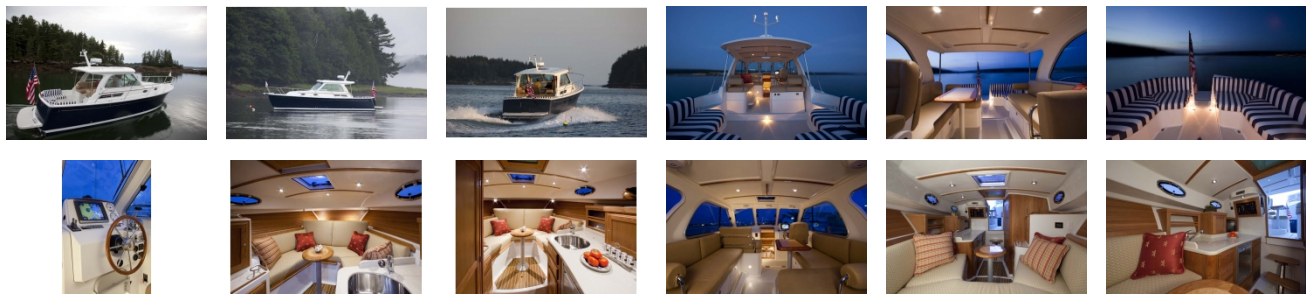
Cabin

Varnished Cherry interior joinery on molded composite hull liner
Lewmar hatch w/ OCEANair Skyscreen
Custom hi-lo table w/ Birdseye Maple inlay
V-berth w/ filler and cushion, converts to dinette
Shelves outboard of berth
Cedar lined hanging locker
Cherry hull ceilings
"Teak and Holly" high pressure laminate cabin sole w/ surface texture
Interior / Helm Deck speakers
Storage under dinette and forward berth
Charging station (AC/DC/USB)
Sirius XM ready Fusion Stereo system w/bluetooth connectivity
Storage under dinette and forward berth

External Links

- [Back Cove 30](#) Manufacturer site

GALLERY



DimillosYacht Sales
1 Long Wharf, Portland, ME 04101
Phone: 207-773-7632