



**DimillosYacht Sales**  
1 Long Wharf, Portland, ME 04101  
Phone: 207-773-7632

---

# Back Cove 32

Boat Type: Downeast



## OVERVIEW

Back Cove has become synonymous with motor yacht cruising in affordable and easily maintained yachts. “Practical elegance” speaks to the simplicity and serviceability of her systems and to the gracious lines of the down east motor yacht.

The Back Cove 32 is the latest model to be launched in a range that spans more than 700 hulls and 14 years. New to the Back Cove range for 2017 she is an amalgam of design ideas coming from discussions with our current owners and potential owners, about the ways in which they use their boats.

The Back Cove 32 offers the same concepts that have built the success of the range. Extraordinary fuel efficiency from her single diesel engine, straight forward systems and rugged good looks that are the talk of any harbor she enters.

While her on-deck spaces are perfect for entertaining family and friends, her cozy and luxurious interior perfectly suits the needs of the cruising couple. The skilled boat builders at Back Cove have crafted a warm and inviting interior using American cherry, finely finished with satin varnish.

Please step aboard.

## SPECIFICATIONS

### Basic Information

|               |           |                |          |
|---------------|-----------|----------------|----------|
| Manufacturer: | Back Cove | Boat Type:     | Downeast |
| Model:        | 32        | Hull Material: |          |
| Year:         | 2017      | Hull Type:     |          |
| Category:     | Power     |                |          |

### Dimensions & Weight

|               |                          |                   |                    |
|---------------|--------------------------|-------------------|--------------------|
| Length:       | 32.00 ft                 | Draft - max:      | 3 ft - 0.91 meter  |
| LOA:          | 37 ft - 11.28 meter      | Bridge Clearance: | 12 ft - 3.66 meter |
| Beam:         | 11 ft 10 in - 3.61 meter | Dry Weight:       | 17500 ft           |
| Deadrise Aft: | -                        |                   |                    |

### Tank Capacities

|                   |                         |               |                        |
|-------------------|-------------------------|---------------|------------------------|
| Fuel Tank:        | 185 gallons - 1 tank(s) | Holding Tank: | 40 gallons - 1 tank(s) |
| Fresh Water Tank: | 80 gallons - 1 tank(s)  |               |                        |

### Accommodations

|                 |    |              |   |
|-----------------|----|--------------|---|
| Total Cabins:   | -  | Crew Cabins: | - |
| Total Berths:   | -  | Crew Berths: | - |
| Total Sleeps:   | -  | Crew Sleeps: | - |
| Total Heads:    | -  | Crew Heads:  | - |
| Captains Cabin: | No |              |   |

## FEATURES

### Hull

Back Cove white iso-npg gelcoat  
Vinylester backup resin  
VIP Resin Infused hull w/ PVC foam core sandwich  
VIP Resin Infused foam core stringer system  
Advanced prop pocket hull design  
Awlgrip boot top  
Molded cove stripe depression w/ "gold leaf" style stripe

### DECK

Back Cove white iso-npg gelcoat w/ graystone anti-skid on walking surfaces  
VIP Resin infused balsa core sandwich structure  
Mooring cleats forward, aft and spring line. Aft cleats are pull-up style  
Molded Composite bow sprit w/ stainless steel anchor roller  
Anchor locker w/ ground tackle storage  
Hard top mounted running lights LED

LED all-around anchor/nav light on hard top  
Teak accent stripe on cabin side  
Custom 1-1/4" 316L stainless steel perimeter rail  
SS handrails on hard top, port and starboard  
Compressed air horn on hardtop (mast opt.)  
(4) opening Port lights w/ insect screens  
Port & starboard molded steps leading to side & fore deck  
Molded cockpit seating w/ storage  
Transom Door on centerline  
Cockpit hatch to lazarette  
Swim platform w/ SS under mount swim ladder  
Hot and cold cockpit shower  
Self draining cockpit  
Lewmar cabin hatch with Oceanair screen  
Acrylic, companion way sliding door with screen  
Pop-up fender cleats on cockpit coaming

## **MECHANICAL SYSTEMS**

Volvo D6 370hp electronically controlled engine and marine gear  
Volvo color display  
1.75" Aquamet shaft  
4 Blade NiBrAl propeller  
PSS Dripless shaft log  
Binnacle mount Volvo electronic single lever engine control  
Internal sea strainer  
185 US gallon fuel tank w/ 2" fill  
Racor Fuel Filter  
6" Wet exhaust w/ two stage horizontal muffler  
Electric actuated trim tabs port and starboard w/ helm controller  
SeaStar hydraulic steering w/ tilt helm pump  
Sidepower bow thruster w/ joy stick control (SE60i)  
Hot and Cold pressurized water  
11 gallon hot water heater w/ heat exchanger  
Bronze sea valve on engine raw water inlet w/Berk grease fitting  
Marelon sea valves on underwater thru-hulls  
Automatic Fireboy extinguisher system w/ manual back-up

## **ELECTRICAL SYSTEMS**

AC and DC control panels with polarity indicator  
DC system battery management switching  
DC breakers for electronics  
Emergency cross over switch / ACR  
(2) 120V AC 30 amp shore power w/ 50 foot cord sets  
AC shore power system ELCI protected  
Galvanic isolator  
GFI protected 120V circuits  
Battery Charger  
(2) 4D AGM house battery

(3) Group 31 AGM engine start battery  
(3) 12VDC automatic bilge pumps  
Bonding system w/ zinc transom anode  
LED Engine room lighting (2) w/ bezel switch  
Cockpit courtesy lights switched at transom door and helm  
Overhead LED cabin lights, with dimmer control  
Reading lights in salon / berth area  
Overhead bi-color LED helm deck light w/ switch  
12V outlet at helm and in cabin

## **HEAD/SANITARY SYSTEMS**

Head to port w/ separate shower stall to starboard  
Molded seat in shower stall w/ storage beneath  
Built-in vanity w/ sink and storage in head  
Borrowed light in head with privacy glass  
Stainless steel opening ports w/ insect screen and shade  
Cherry framed mirror in head  
Full length mirror on head door  
Solid surface countertop  
Single lever faucet  
Shower drain sump pump system  
Standard size fresh water electric MSD w/ holding tank  
Macerator for holding tank overboard discharge as permitted  
Holding tank pump-out fitting on deck  
Sealed overhead lighting  
Powered exhaust fan (12V) in head and shower  
Waste and fresh water level gauge

## **HELM DECK**

Clear anodized aluminum windows w/ opening side and center windows  
(3) windshield wipers w/ fresh water washer system and intermittent control  
Lewmar sliding hatch w/ OCEANair Skyscreen  
Compass, illuminated  
Stazo wood grain steering wheel  
Arrigoni helm seat  
FRP companionway slider with screen and lockable latch  
Engine hatch opens by electrical linear actuator  
Day hatch to forward engine room  
Convertible dinette with Back Cove high gloss inlaid tables  
Mates seatback moves fore and aft for helm or settee positioning  
Storage beneath dinette seating  
Charging station AC/DC/USB

## **GALLEY**

Electric two burner cook-top  
Drawer style AC/DC fridge/freezer  
Large SS Galley sink w/ single lever faucet & drop in cover

Solid surface countertop  
Microwave oven  
Drawer and doors storage below counter

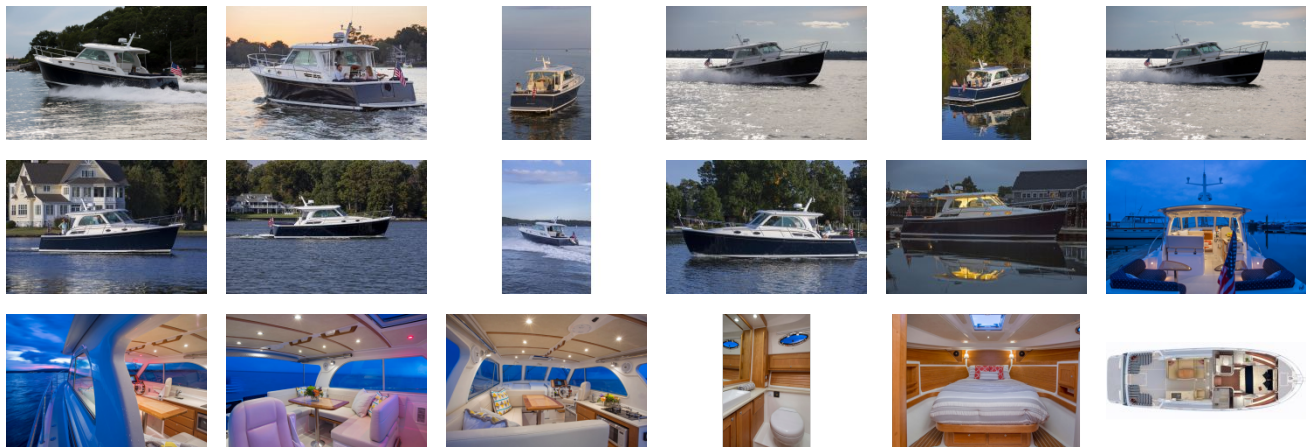
## **CABIN**

Varnished Cherry interior on molded composite hull liner  
Lewmar hatch w/ screen  
(2) stainless steel opening portlights with screens  
Island double berth w/ drawers and storage below  
Shelves above berth with storage cubbies forward of lockers  
Cedar lined hanging locker to starboard  
Drawer / Shelf locker to port  
Cherry hull ceilings  
Sirius – XM ready Fusion stereo system w/ Bluetooth connectivity. Interior and helm deck speakers  
“Teak and holly” laminate cabin sole  
Molded headliner with soft pane  
Charging station AC/DC/USB

## **External Links**

- [Standard Equipment List](#)

GALLERY



**DimillosYacht Sales**  
1 Long Wharf, Portland, ME 04101  
Phone: 207-773-7632