



**DimillosYacht Sales**  
1 Long Wharf, Portland, ME 04101  
Phone: 207-773-7632

# Back Cove 34

Boat Type: Cruiser



## OVERVIEW

Our goal for the Back Cove 34 was to create a cruising yacht with the same simple features, usability and maintenance that have built the popularity of the Back Cove brand. With input from many of our current boat owners, we have created a yacht which offers tremendous value, great style and modern practicality.

Below deck is found a large and comfortable island berth and a convertible L-settee which can be isolated from the cabin with a curtain. To starboard a large head with separate stall shower. On the helm deck, a full galley stretches out aft of the helm seat and to port, a dinette that can seat four adults in complete comfort, is the perfect spot to enjoy a meal on board. Her inlaid table is a fine example of the Maine boat builder's craftsmanship and tradition, evident throughout the Back Cove 34.

Forward of the dinette, a double mate's seat is a comfortable perch for the navigator. The helm deck is airy and bright with overhead pilot hatches, opening side windows and a center opening windshield. A Stidd helm chair provides comfort for the helmsman underway.

In her cockpit a large, L-shaped bench seat and a fold-away aft facing seat provide comfortable lounging spots while underway or when anchored in a peaceful cove. Engine access is extraordinary, as the helm deck, including the port

side dinette, lifts hydraulically to expose the yacht's mechanical systems below.

The Back Cove 34 is the ideal couple's cruising yacht.

## SPECIFICATIONS

### Basic Information

Manufacturer:	Back Cove	Boat Type:	Cruiser
Model:	34	Hull Material:	Fiberglass
Year:	2017	Hull Type:	
Category:	Power		

### Dimensions & Weight

Length:	34.00 ft	Draft - max:	3 ft 1 in - 0.94 meter
LOA:	38 ft 5 in - 11.71 meter	Bridge Clearance:	12 ft 2 in - 3.71 meter
Beam:	12 ft - 3.66 meter	Dry Weight:	16000 ft
Deadrise Aft:	-		

### Tank Capacities

Fuel Tank:	185 gallons - 1 tank(s)	Holding Tank:	40 gallons - 1 tank(s)
Fresh Water Tank:	80 gallons - 1 tank(s)		

### Accommodations

Total Cabins:	-	Crew Cabins:	-
Total Berths:	-	Crew Berths:	-
Total Sleeps:	-	Crew Sleeps:	-
Total Heads:	-	Crew Heads:	-
Captains Cabin:	No		

## FEATURES

### Hull

Back Cove white iso-npg gelcoat

Vinylester backup resin

VIP Resin Infused hull w/ PVC foam core sandwich

VIP Resin Infused foam core stringer system

Advanced prop pocket hull design

A wlgrip boot top

Molded cove stripe depression w/ "gold leaf" style stripe

### Deck

Back Cove white iso-npg gelcoat w/ graystone anti-skid on walking surfaces

VIP Resin infused balsa core sandwich structure

Mooring cleats forward, aft and spring line cleats. Aft cleats are pull-up style

Molded Composite bow sprit w/ stainless steel anchor roller

Anchor locker w/ ground tackle storage

Running lights (LED)

Teak accent stripe on cabin side

Custom 1-1/4" 316L stainless steel perimeter rail SS handrails on hard top, port and starboard

Compressed air horn on hardtop (mast opt.)

(6) opening Port lights w/ insect screens

Port & starboard molded steps leading to side & fore deck Molded cockpit seating w/ storage, forward facing and aft

Transom Door to starboard

Swim platform w/ SS under mount swim ladder

Hot and cold cockpit shower

Self draining cockpit

### **Mechanical Systems**

Cummins QSB 380 mhp electronic engine and marine gear

Cummins Smartcraft display

2" Aquamet shaft

4 Blade NiBrAl propeller

PSS Dripless shaft log

Binnacle mount electronic single lever engine control

Internal sea strainer

185 gallon fuel tank w/ 2" fill

Racor Fuel Filter

6" Exhaust w/ two stage horizontal muffler

Electric actuated trim tabs port and starboard w/ helm controller

SeaStar hydraulic steering w/ tilt helm pump

Below deck air conditioning w/reverse cycle heat

Sidepower bow thruster w/ joy stick control (SE60i)

Hot and Cold pressurized water

11 gallon hot water heater w/ heat exchanger

Marelon sea valves on underwater thru hulls

Automatic Fireboy extinguisher system w/ manual back-up

### **Electrical Systems**

AC and DC control panels with polarity indicator

DC system battery management switching

DC breakers for electronics

Emergency cross over switch / ACR

110V AC 30 amp shorepower w/ 50 foot cord set

AC shorepower system ELCI protected

Galvanic isolator

GFI protected 110V circuits

Battery Charger

(2) 4D GEL house battery

(2) Group 31 engine start battery

(2) 12VDC automatic bilge pumps

Bonding system w/ zinc transom anode

Engine room lighting (2) w/ bezel switch

Cockpit courtesy lights switched at transom door and helm  
Overhead LED cabin lights, individually bezel switched  
Reading lights in salon / berth area  
Overhead dual color LED helm deck light w/ switch  
12V outlet at helm and in cabin

### **Head / Sanitary Systems**

Head to port w/ separate shower stall to starboard  
Molded seat in shower stall w/ storage beneath  
Built-in vanity w/ sink and storage in head  
Borrowed light in head with privacy glass  
Stainless steel opening ports w/ insect screen and shade  
Cherry framed mirror in head  
Full length mirror on head door  
Solid surface countertop  
Single lever faucet  
Shower drain sump pump system  
Standard size fresh water electric MSD w/ holding tank  
Macerator for holding tank overboard discharge as permitted  
Holding tank pump-out fitting on deck  
Sealed overhead lighting  
Powered exhaust fan (12V) in head and shower  
Waste and fresh water level gauge

### **Helm Deck**

Clear anodized aluminum windows w/ opening windows port, starboard and center  
(3) windshield wipers w/ fresh water washer system  
Lewmar sliding hatches w/ OCEANair Skyscreens  
Compass, illuminated  
Stazo wood grain steering wheel  
Stidd 500N series helm seat  
Smoked acrylic companionway slider w/ lockable latch  
Engine hatch opens by electric/hydraulic linear actuator  
Large engine room hatch incorporates dinette & mate's bench  
Dinette seating w/ hi-low Back Cove high gloss table w/ decorative inlay  
Dinette and mate convert to double berth  
Storage beneath dinette benches  
Charging station (AC/DC/USB)

### **Galley**

Electric two burner cook-top with cover  
(2) SS Drawer style AC/DC fridges w/ freezer compartment  
Large SS Galley sink w/ single lever faucet & drop in cover  
Solid surface countertop  
Built-in convection microwave  
Drawer and doors storage below counter

### **Cabin**

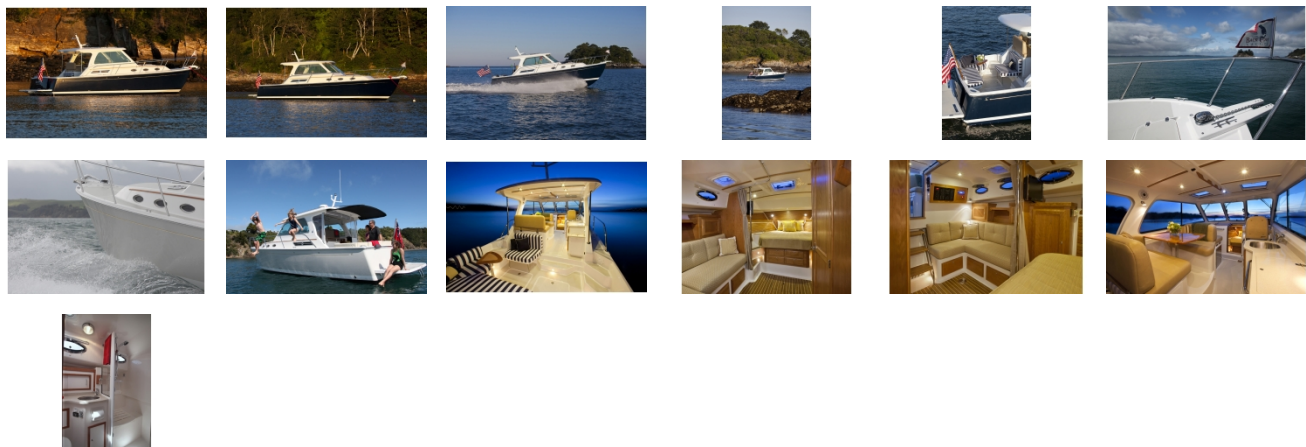
Varnished Cherry interior on molded composite hull liner  
Lewmar hatches w/ screens

Island double berth w/ drawers and storage below  
Shelves above berth  
Cedar lined hanging locker to starboard  
Drawer / Shelf locker to port  
Cherry hull ceilings  
L-settee converts to a second berth  
Storage above and below L-settee  
Privacy curtain to enclose berth  
"Teak and Holly" high pressure laminate sole w/ surface texture  
Overhead lighting  
Sirius XM ready infusion stereo system w/bluetooth connectivity  
Interior / Helm Deck speakers

## External Links

- [Back Cove 34](#) Manufacturer site

GALLERY



**DimillosYacht Sales**  
1 Long Wharf, Portland, ME 04101  
Phone: 207-773-7632