



**DimillosYacht Sales**  
1 Long Wharf, Portland, ME 04101  
Phone: 207-773-7632

# Back Cove 37

Boat Type: Cruiser



## OVERVIEW

The Back Cove 37 continues the practical features that have identified the Back Cove range of down east style motor yachts: Usability, low maintenance and fuel efficiency.

In the master stateroom there is an island berth for ease of egress, and for stowage of owner's gear, there are many lockers and drawers provided. To starboard aft of the master is a full guest cabin with a pullman berth and ample storage capacity. Opposite and to port is a large head unit with separate stall shower.

Between the lower and salon sole levels, the mid-galley is fully equipped with a refrigerator, freezer, microwave oven and deep stainless steel sink as well as many drawers and lockers for galley storage. Large windows overhead provide the galley with ample visibility and light.

In the salon twin Stidd helm seats are provided for the helmsman and crew. Aft of the helm is an L-shaped settee and to port a two person love seat. An elegant inlaid table offers a comfortable space for dining with crew and guests. Large windows offer plenty of light and air while overhead a large sliding pilot hatch allows air to flow through the salon. At the aft end of the main salon large swing-bi-fold doors completely open up the salon to the cockpit. At the transom, fixed seating will provide the comfort you desire for socializing with guests.

The fuel efficient Back Cove 37 is the ideal yacht for long range cruising.

## SPECIFICATIONS

### Basic Information

Manufacturer:	Back Cove	Boat Type:	Cruiser
Model:	37	Hull Material:	Fiberglass
Year:	2017	Hull Type:	
Category:	Power		

### Dimensions & Weight

Length:	37.00 ft	Draft - max:	3 ft 7 in - 1.09 meter
LOA:	42 ft - 12.8 meter	Bridge Clearance:	12 ft 6 in - 3.81 meter
Beam:	13 ft 3 in - 4.04 meter	Dry Weight:	22100 lb
Deadrise Aft:	-		

### Tank Capacities

Fuel Tank:	300 gallons - 1 tank(s)	Holding Tank:	50 gallons - 1 tank(s)
Fresh Water Tank:	120 gallons - 1 tank(s)		

### Accommodations

Total Cabins:	-	Crew Cabins:	-
Total Berths:	-	Crew Berths:	-
Total Sleeps:	5	Crew Sleeps:	-
Total Heads:	-	Crew Heads:	-
Captains Cabin:	No		

## FEATURES

### Hull

Back Cove white iso-npg gelcoat  
Vinylester backup resin  
VIP Resin Infused hull w/ PVC foam core sandwich  
VIP Resin Infused foam core stringer system  
Advanced prop pocket hull design  
Awlgrip boot top  
Molded cove stripe depression w/ "gold leaf" style stripe

### Deck

Back Cove white iso-npg gelcoat w/ graystone anti-skid on walking surfaces  
VIP Resin Infused balsa core sandwich structure  
Mooring cleats forward, aft and spring line cleats. Aft cleats are pull-up style  
Molded Composite bow sprit w/ stainless steel anchor roller and windlass

Anchor locker w/ ground tackle storage  
Running lights (LED)  
Teak accent stripe on cabin side  
Custom 1-1/4" 316L stainless steel perimeter rail  
SS handrails concealed under hardtop, port and starboard  
Compressed air horn on hardtop (mast opt.)  
(6) opening Port lights w/ insect screens and blinds  
Port & starboard molded steps leading to side & fore deck  
Molded quarter seating in cockpit w/ storage, port and starboard  
Transom door on centerline  
Swim platform w/ SS under-mount swim ladder  
Hot and cold cockpit shower  
Self draining cockpit

### **Mechanical Systems**

Cummins QSB 480 mhp electronic engine and marine gear  
2.25' Aquamet shaft  
4 Blade NiBrAl propeller  
PSS Dripless shaft log  
Binnacle mount electronic single lever engine control  
Digital engine control panel w/ alarms and hour meter  
Internal sea strainer  
Racor Fuel Filter  
8" Exhaust with two stage horizontal muffler  
Electric actuated trim tabs port and starboard w/ helm indicators  
SeaStar hydraulic steering w/ tilt helm pump  
Sidepower bow thruster w/ joy stick control (SE80i)  
Hot and cold pressurized water  
11 gallon hot water heater w/ heat exchanger  
Marelon sea valves on underwater thru hulls  
Automatic Fireboy extinguisher system w/ manual back-up  
Three zone air conditioning w/ reverse cycle heat

### **Electrical Systems**

AC and DC control panels with polarity indicator  
DC system battery management switching  
DC breakers for electronics  
Emergency cross over switch / ACR  
(2) 110V AC 30 amp shorepower inlets & 50ft cord sets  
AC shorepower system ELCI protected  
Galvanic isolator  
Onan 9.0 kw gen set in sound shield  
GFI protected 110V circuits  
Battery Charger  
(2) 4D AGM house battery  
(3) Group 31 engine start battery  
(3) 12VDC automatic bilge pumps  
Bonding system w/ zinc transom anode  
Mechanical / Utility space lighting (5) w/ bezel switch  
Cockpit courtesy lights switched at transom door and helm

Cabin courtesy lights switched at helm and island berth in Master Stateroom  
Overhead LED lights w/ dimmer control throughout Cabin, Galley, Helm Deck / Salon and Cockpit  
Overhead dual tri-color LED light at helm station  
12V outlets throughout vessel

### **Head / Sanitary Systems**

Head w/ separate shower stall w/ bi-fold door  
Molded seat in shower stall w/ storage beneath  
Built-in vanity w/ sink  
Lewmar hatch w/ OCEANair Skyscreen  
Stainless steel opening ports (2) w/ insect screen and shade  
Cherry framed mirror  
Full length mirror on door  
Solid surface countertop  
Single lever faucet  
Shower drain sump pump system  
Full size fresh water electric MSD w/ holding tank  
Waste tank level gauge  
Macerator for holding tank overboard discharge as permitted • Holding tank pump out fitting on deck  
Sealed overhead lighting w/ bezel switch  
Powered exhaust fan (12V)  
Fresh water level gauge

### **Helm Deck / Salon Area**

Clear anodized aluminum windows w/ opening windows port, starboard and center  
Large multi-panel variable opening door system  
(3) windshield wipers w/ fresh water washer system  
Lewmar sliding hatch w/ OCEANair Skyscreen  
Compass, illuminated  
Stazo wood grain steering wheel  
(2) Stidd 500N series helm seats  
Large bilge storage below hem sole, access by gas strut assisted hatch  
Large engine room hatch opens by switch-controlled actuator  
"Teak and Holly" high pressure laminate sole w/ surface texture  
L-Settee to starboard w/ hi-low table – converts to double berth  
Double settee opposite w/ molded end table  
Flip-down LCD TV in headliner w/ separate DVD player  
Molded headliner with padded panel inserts  
Sirius XM ready Fusion stereo system w/bluetooth connectivity  
Interior / cockpit speakers  
Charging station (AC/DC/USB)

### **Mid Galley**

Electric two burner cook-top  
AC/DC stainless steel, drawer-type fridge/freezer compartments  
Large SS galley sink w/ single lever faucet & drop in cover  
Solid surface countertop  
Under-counter convection microwave  
Drawer and doors storage below counter  
Molded lighting soffit over countertop

“Teak and Holly” high pressure laminate sole w/ surface texture

### **Master Stateroom**

Varnished Cherry interior joinery on molded composite hull liner

Lewmar hatch w/ OCEANair Skyscreen

“Teak and Holly” high pressure laminate cabin w/ surface texture

Molded headliner w/ padded panel inserts

Island queen berth w/ drawers and storage below

Shelves outboard w/ cherry fiddles

Cherry hull ceiling

Cedar lined hanging locker to port

Multi drawer dresser w/ dovetailed drawers to starboard

### **Guest Stateroom**

Varnished Cherry interior joinery on molded composite hull liner

Lewmar hatch w/ OCEANair Skyscreen

“Teak and Holly” high pressure laminate sole w/ surface texture

Molded headliner with padded panel inserts

Berth with drawers under

Cedar lined hanging locker

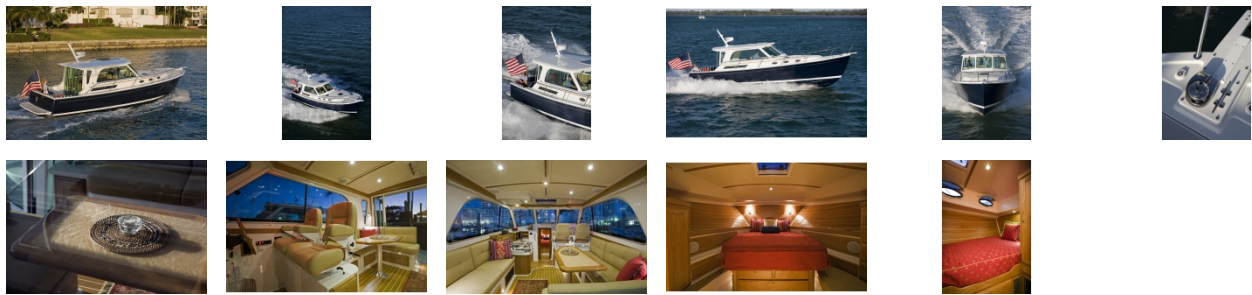
Cherry headboard

Cherry hull ceilings on hull sides

### **External Links**

- [Back Cove 37](#) Manufacturer site

GALLERY



**DimillosYacht Sales**  
1 Long Wharf, Portland, ME 04101  
Phone: 207-773-7632