



E Marine Motor Yachts

Address

Phone: 555

Back Cove 37

Boat Type: Cruiser



OVERVIEW

The Back Cove 37 continues the practical features that have identified the Back Cove range of down east style motor yachts: Usability, low maintenance and fuel efficiency.

In the master stateroom there is an island berth for ease of egress, and for stowage of owner's gear, there are many lockers and drawers provided. To starboard aft of the master is a full guest cabin with a pullman berth and ample storage capacity. Opposite and to port is a large head unit with separate stall shower.

Between the lower and salon sole levels, the mid-galley is fully equipped with a refrigerator, freezer, microwave oven and deep stainless steel sink as well as many drawers and lockers for galley storage. Large windows overhead provide the galley with ample visibility and light.

In the salon twin Stidd helm seats are provided for the helmsman and crew. Aft of the helm is an L-shaped settee and to port a two person love seat. An elegant inlaid table offers a comfortable space for dining with crew and guests. Large windows offer plenty of light and air while overhead a large sliding pilot hatch allows air to flow through the salon. At the aft end of the main salon large swing-bi-fold doors completely open up the salon to the cockpit. At the transom, fixed seating will provide the comfort you desire for socializing with guests.

The fuel efficient Back Cove 37 is the ideal yacht for long range cruising.

SPECIFICATIONS

Basic Information

Manufacturer:	Back Cove	Boat Type:	Cruiser
Model:	37	Hull Material:	Fiberglass
Year:	2017	Hull Type:	
Category:	Power		

Dimensions & Weight

Length:	37.00 ft	Draft - max:	3 ft 7 in - 1.09 meter
LOA:	42 ft - 12.8 meter	Bridge Clearance:	12 ft 6 in - 3.81 meter
Beam:	13 ft 3 in - 4.04 meter	Dry Weight:	22100 lb
Deadrise Aft:	-		

Tank Capacities

Fuel Tank:	300 gallons - 1 tank(s)	Holding Tank:	50 gallons - 1 tank(s)
Fresh Water Tank:	120 gallons - 1 tank(s)		

Accommodations

Total Cabins:	-	Crew Cabins:	-
Total Berths:	-	Crew Berths:	-
Total Sleeps:	5	Crew Sleeps:	-
Total Heads:	-	Crew Heads:	-
Captains Cabin:	No		

FEATURES

Hull

Back Cove white iso-npg gelcoat
Vinylester backup resin
VIP Resin Infused hull w/ PVC foam core sandwich
VIP Resin Infused foam core stringer system
Advanced prop pocket hull design
Awlgrip boot top
Molded cove stripe depression w/ "gold leaf" style stripe

Deck

Back Cove white iso-npg gelcoat w/ graystone anti-skid on walking surfaces
VIP Resin Infused balsa core sandwich structure
Mooring cleats forward, aft and spring line cleats. Aft cleats are pull-up style
Molded Composite bow sprit w/ stainless steel anchor roller and windlass

Anchor locker w/ ground tackle storage
Running lights (LED)
Teak accent stripe on cabin side
Custom 1-1/4" 316L stainless steel perimeter rail
SS handrails concealed under hardtop, port and starboard
Compressed air horn on hardtop (mast opt.)
(6) opening Port lights w/ insect screens and blinds
Port & starboard molded steps leading to side & fore deck
Molded quarter seating in cockpit w/ storage, port and starboard
Transom door on centerline
Swim platform w/ SS under-mount swim ladder
Hot and cold cockpit shower
Self draining cockpit

Mechanical Systems

Cummins QSB 480 mhp electronic engine and marine gear
2.25' Aquamet shaft
4 Blade NiBrAl propeller
PSS Dripless shaft log
Binnacle mount electronic single lever engine control
Digital engine control panel w/ alarms and hour meter
Internal sea strainer
Racor Fuel Filter
8" Exhaust with two stage horizontal muffler
Electric actuated trim tabs port and starboard w/ helm indicators
SeaStar hydraulic steering w/ tilt helm pump
Sidepower bow thruster w/ joy stick control (SE80i)
Hot and cold pressurized water
11 gallon hot water heater w/ heat exchanger
Marelon sea valves on underwater thru hulls
Automatic Fireboy extinguisher system w/ manual back-up
Three zone air conditioning w/ reverse cycle heat

Electrical Systems

AC and DC control panels with polarity indicator
DC system battery management switching
DC breakers for electronics
Emergency cross over switch / ACR
(2) 110V AC 30 amp shorepower inlets & 50ft cord sets
AC shorepower system ELCI protected
Galvanic isolator
Onan 9.0 kw gen set in sound shield
GFI protected 110V circuits
Battery Charger
(2) 4D AGM house battery
(3) Group 31 engine start battery
(3) 12VDC automatic bilge pumps
Bonding system w/ zinc transom anode
Mechanical / Utility space lighting (5) w/ bezel switch
Cockpit courtesy lights switched at transom door and helm

Cabin courtesy lights switched at helm and island berth in Master Stateroom
Overhead LED lights w/ dimmer control throughout Cabin, Galley, Helm Deck / Salon and Cockpit
Overhead dual tri-color LED light at helm station
12V outlets throughout vessel

Head / Sanitary Systems

Head w/ separate shower stall w/ bi-fold door
Molded seat in shower stall w/ storage beneath
Built-in vanity w/ sink
Lewmar hatch w/ OCEANair Skyscreen
Stainless steel opening ports (2) w/ insect screen and shade
Cherry framed mirror
Full length mirror on door
Solid surface countertop
Single lever faucet
Shower drain sump pump system
Full size fresh water electric MSD w/ holding tank
Waste tank level gauge
Macerator for holding tank overboard discharge as permitted • Holding tank pump out fitting on deck
Sealed overhead lighting w/ bezel switch
Powered exhaust fan (12V)
Fresh water level gauge

Helm Deck / Salon Area

Clear anodized aluminum windows w/ opening windows port, starboard and center
Large multi-panel variable opening door system
(3) windshield wipers w/ fresh water washer system
Lewmar sliding hatch w/ OCEANair Skyscreen
Compass, illuminated
Stazo wood grain steering wheel
(2) Stidd 500N series helm seats
Large bilge storage below hem sole, access by gas strut assisted hatch
Large engine room hatch opens by switch-controlled actuator
"Teak and Holly" high pressure laminate sole w/ surface texture
L-Settee to starboard w/ hi-low table – converts to double berth
Double settee opposite w/ molded end table
Flip-down LCD TV in headliner w/ separate DVD player
Molded headliner with padded panel inserts
Sirius XM ready Fusion stereo system w/bluetooth connectivity
Interior / cockpit speakers
Charging station (AC/DC/USB)

Mid Galley

Electric two burner cook-top
AC/DC stainless steel, drawer-type fridge/freezer compartments
Large SS galley sink w/ single lever faucet & drop in cover
Solid surface countertop
Under-counter convection microwave
Drawer and doors storage below counter
Molded lighting soffit over countertop

"Teak and Holly" high pressure laminate sole w/ surface texture

Master Stateroom

Varnished Cherry interior joinery on molded composite hull liner

Lewmar hatch w/ OCEANair Skyscreen

"Teak and Holly" high pressure laminate cabin w/ surface texture

Molded headliner w/ padded panel inserts

Island queen berth w/ drawers and storage below

Shelves outboard w/ cherry fiddles

Cherry hull ceiling

Cedar lined hanging locker to port

Multi drawer dresser w/ dovetailed drawers to starboard

Guest Stateroom

Varnished Cherry interior joinery on molded composite hull liner

Lewmar hatch w/ OCEANair Skyscreen

"Teak and Holly" high pressure laminate sole w/ surface texture

Molded headliner with padded panel inserts

Berth with drawers under

Cedar lined hanging locker

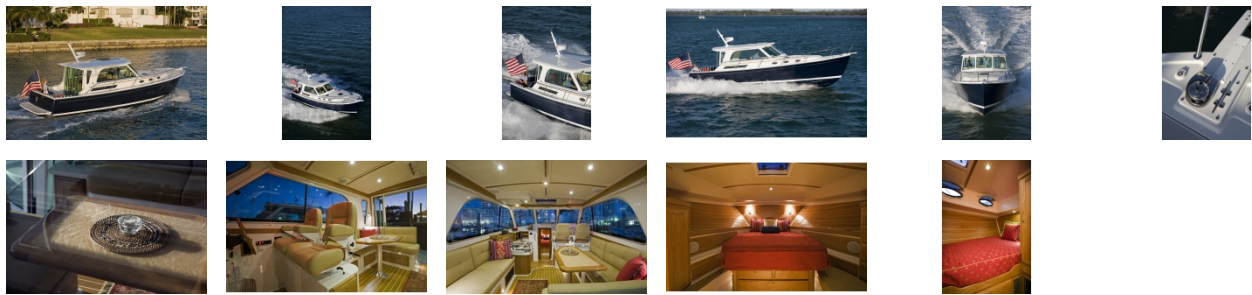
Cherry headboard

Cherry hull ceilings on hull sides

External Links

- [Back Cove 37](#) Manufacturer site

GALLERY



E Marine Motor Yachts
Address
Phone: 555