



Stan Miller Yachts
245 Marina Drive
Long Beach, CA, US
90803
Phone: 562-598-9433

Sabre 48 Salon Express

Boat Type: Motor Yacht



OVERVIEW

Sabre 48 Salon Express: An Ideal Combination of Evolution and Revolution.

The 48 Salon Express has a traditional exterior profile that belies her contemporary performance. She cruises at 27 knots and, and at wide open throttle, she'll attain more than 32 knots. Pod drives and joystick controls give every owner-operator the confidence to dock her in the most difficult of circumstances, and remarkably low sound levels while underway allow for a more pleasant experience while cruising.

Featuring a standard configuration of two cabins and two heads, the 48 Salon Express is supplemented by a utility space forward of the engine room that can be laid out as additional crew quarters. Designed with our customers in mind, her galley-down layout doesn't compromise on space and light, making food and drink preparation a pure pleasure. Unique to the Sabre 48 design, her master berth and en-suite head have an athwartships orientation, allowing for flat cabin sole on all side of the spacious island queen.

Her raised cockpit sole brings together the social aspects of the cockpit and main salon, and the aft end of the house

opens up fully to connect the spaces. Her main salon offers ample seating surfaces for entertaining or simply relaxing to read or enjoy the standard entertainment systems. While underway the raised settee to port of the Stidd helm chair is a perfect place for the crew to enjoy the ride. And when docking, a standard side deck door assists her helmsman and crew. The two cabin, two head layout is supplemented by a mechanical space forward of the engine room. As an option, this space can be laid out as a crew quarters with berth and head unit.

SPECIFICATIONS

Basic Information

Manufacturer:	Sabre	Boat Type:	Motor Yacht
Model:	48 Salon Express	Hull Material:	Fiberglass
Year:	2021	Hull Type:	Modified Vee
Category:	Power		

Dimensions & Weight

Length:	48.00 ft	Draft - max:	4 ft 1 in - 1.24 meter
LOA:	52 ft 3 in - 15.93 meter	Bridge Clearance:	14 ft 2 in - 4.32 meter
Beam:	15 ft 4 in - 4.67 meter	Dry Weight:	37500 ft
Deadrise Aft:	14.00 °		

Tank Capacities

Fuel Tank:	525 gallons - 2 tank(s)	Holding Tank:	70 gallons - 1 tank(s)
Fresh Water Tank:	160 gallons - 1 tank(s)		

Accommodations

Total Cabins:	-	Crew Cabins:	-
Total Berths:	-	Crew Berths:	-
Total Sleeps:	4	Crew Sleeps:	-
Total Heads:	2	Crew Heads:	-
Captains Cabin:	No		

FEATURES

Standard Equipment

Hull

Modified Deep "V" Planing hull design, with pod drive tunnels.

14° deadrise at transom, 23° deadrise amidships.

ISO NPG white gelcoat w/vinylester back-up resin.

Bottom, topsides and transom VIP resin infused biaxial E-glass with Corecell SAN foam core.

Stringer system biaxial E-glass with foam core.

VIP Resin Infused E-glass swim platform with molded-in anti-skid surface.

Hull side rubbing strakes.

PVC rub rail with stainless steel cap.

Painted (Urethane) double boot top.

Gold recessed cove stripe.

Deck and Hardtop

ISO NPG gelcoat.

VIP resin infused biaxial E-glass with balsa core.

Molded-in anti-skid deck surfaces.

Companionway door to port.

Sliding windows in salon on cabin sides.

Electric opening window in salon aft bulkhead.

Hinged access door to side deck at helm.

Flush, outward opening, transom door with latch.

Anchor locker with slam latch.

Large lazarette/engine room access hatch in cockpit sole with compression latches.

Integrated Sure Shade system over cockpit

Deck Hardware

1 1/4" Diameter type 316 stainless steel perimeter rail system.

(6) 12" Stainless steel cleats (2 fwd, 4 mid ship)

(1) 10" Stainless steel cleat to starboard of windlass as anchor rode tie off.

(4) Custom cast stainless steel mid-rail line chocks.

(2) Custom cast stainless steel skene chocks forward.

(2) Stainless steel bollard style mooring cleats aft

(2) Stainless 12" cleats on cockpit coaming on centerline

Custom stainless steel bow pulpit with dual anchor roller for 44# CQR or Delta anchor and "lunch hook".

Quick anchor windlass, electric rope-chain type

Teak flag staff and socket on taffrail.

Burgee staff on bow pulpit.

(6) Low Profile stainless steel hatches w/screens.

(6) Custom stainless steel opening port lights.

Teak toe rails.

Teak cabin side eye-brow.

Custom cast stainless steel "SABRE" medallion.

Raw water washdown system at bow.

Helm Station

Cummins DTS single lever electronic controls.

Cummins Smart Craft display (engine data, tank levels, vessel data, alarms).

Triple windshield wipers with washers.

Ritchie Compass.

Switch controls for horn, running lights, anchor light, engine room blower and optional equipment.

(2) Stidd N Series helm seats with Ultraleather fabric, mounted on a cherry cabinet

Propulsion

Twin Cummins QSC 8.3 550 hp electronic, fresh water-cooled engines with Zeus 3800 pod drives, with integrated steering and trim

120A, 12V alternators each engine.

(2) Exhaust by-pass mufflers.

Engine room blower.

Engine room vent ducts.

Engine room floor with FRP anti-skid.

White gelcoated engine room

Mylar face foam noise barrier.

Fuel System

2) 263 USG diesel fuel tanks port and starboard.

Dual Racor fuel filters with water in fuel probes.

(2) 2" "Diesel" deck fill plates.

Steering and Trim Systems

CMD helm, with joystick.

Trim tabs integrated in CMD Zeus pod drives.

Autopilot integrated in CMD Zeus system.

"Skyhook" GPS position hold system with dedicated GPS receiver.

12V DC Electrical System

Two AGM Group 31 dedicated engine start batteries.

Three AGM 4D deep cycle ship's service batteries.

One AGM Group 24 generator start battery.

Remote control battery switches with controls at helm.

Manual emergency battery crossover switch.

Illuminated main circuit breaker distribution.

Digital battery monitor.

Lighting:

St. Maarten amber cabin reading lights.

High output LED lights in the overhead.

LED strip lighting in appropriate locations.

LED engine room lighting.

Tri-color lights over helm station, red, white blue

Cockpit courtesy lights.

Marine-grade, tinned wire throughout.

12VDC USB chargers at helm and in all cabins

12V AC Electrical Systems

Onan 13.5 kw generator including:

Onan E series display

Dedicated start battery.

Water drop muffler.

Cooling water intake strainer.

Sound shield.

Transfer switch.

50A shore power service with Glendinning Cablemaster & 70 ft. cord.

Isolation transformer

Illuminated main circuit breaker distribution panel.

Digital AC system monitor

120V GFCI protected outlets in each cabin and engine room.

50amp, 3-bank battery charger

Reverse cycle heat/ air conditioning in (3) zones.

Master Stateroom Amidships

Spacious island berth athwartship layout with laminated trim.

Hull side deadlight over head board

Shoji style passageway and closet doors
Shoji style portlight screen panels
Cherry hull ceilings.
Drawers under berth and in bulkhead aft of berth.
(2) hanging lockers fore and aft of bed.
LED flat screen TV and DVD player.
Teak and holly sole.
Sound deadening soft headliner panels.
Pocket door to master head compartment.

Master Head

Private access from master stateroom
Custom tile in WC and shower sole
Glass vessel style sink
High gloss finish over solid cherry counter.
Vanity cabinet below sink
Storage outboard
Mirror above vanity, cherry framed
Separate shower stall with clear bi-fold enclosure and glass tile accent wall within
Electric shower sump pump
Opening port to side deck
Deck hatch with blind/screen overhead
Ventilation blower
Stainless steel towel bars

Guest Stateroom

Spacious island berth, with laminated trim.
Cherry hull ceilings.
Drawers under berth, A/C return grille beside.
Storage lockers, drawers and shelves.
Teak and holly sole.
Sound deadening soft headliner panels.
Pocket door to passageway.
Private access to forward head and shower

Guest Head

Stainless steel under mount sink.
Shower stall with seat and locker outboard.
Hot and cold pressure water
Electric shower sump pump.
Storage lockers.
Solid surface vanity top with bull nose.
Towel bars
Soap dispenser
Cherry wood trimmed mirror over sink.
Ventilation blower.

Galley

Solid surface galley counter top.
Stainless steel under mount sink with cover and pull-out faucet

Stainless steel under mount prep sink with cover.
Soap dispenser
Isotherm stainless steel stand-up refrigerator (top) and freezer
Two burner electric cook top.
Convection microwave with stainless steel face
Drawers and storage lockers below counter.
Built-in waste basket. Recycle bin below steps.

Main Salon

Two Stidd N Series helm chairs mounted on a box
“L” settee to starboard, 5” foam cushions, with storage and Sabre tool drawer under.
High Gloss finished table with hi-low pedestal and angled slide mechanism. Lowers to coffee table height.
Entertainment unit to port including a flat screen LCD TV 32” on lift with DVD player
Sound deadening, soft headliner panels.
Raised mates L-shaped settee to port of helm
Stainless steel door to cockpit
Electrically operated window aft of L-settee
Swing door at helm to starboard side deck
Deep chart table forward of L-settee. Fiddles at nav station

Decor

Varnished cherry interior finish.
Screens on all opening ports.
Ocean Air screen/blinds on deck hatches.
Ocean Air pleated blinds on side windows and side door
Drapes on aft curved windows
Optional fabric and drapery selections.
Dovetailed, varnished maple drawer boxes

Fresh Water System

Water capacity 160 gals.
Stainless steel, 20 gal. water heater, operates on 110-VAC or engine heat.
Temperature control valve on hot water supply.
Hot and cold water pressure system 12V.
Fresh water spigot in engine room.
Transom shower, hot and cold.
Shore water inlet with filter .

Waste Disposal

Polyethylene holding tank with 70 gallon capacity.
Jabsco Quiet Flush fresh water MSD in guest head
Tecma Eco MSD in master head
Diaphragm waste pump on holding tank.

Safety

Single Kahlenberg chrome trumpet horn with compressor
Fire extinguishers, (5) at 2 1/2 lbs.
Marelon sea valves on all thru-hull fittings below waterline.
Bonding system to safeguard against galvanic corrosion.
Automatic fire extinguishing discharge system in engine space with override.

(3) Automatic 12V electric bilge pumps.

(3) High water switches and alarm.

Utility Room

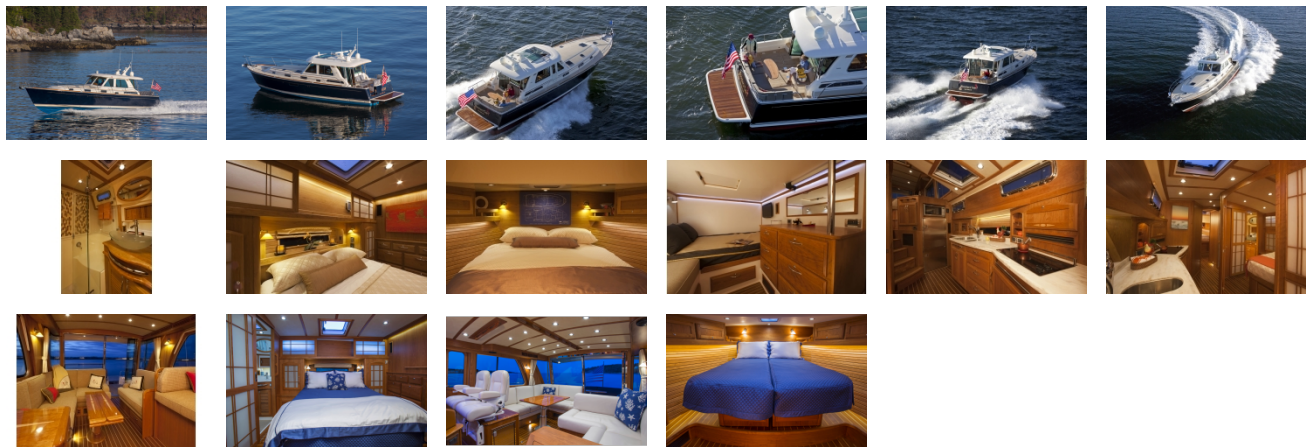
Work space below salon with work bench, drawers and shelves

Optional crew quarters with head unit available in this space

External Links

- [Sabre 48 Salon Express](#)Online Brochure
- [View All Specifications](#)SABRE 48 SALON EXPRESS
- [Virtual Tour](#)

GALLERY



Stan Miller Yachts
245 Marina Drive
Long Beach, CA, US
90803
Phone: 562-598-9433