



# Sabre 42 Fly Bridge

Boat Type: Motor Yacht



## OVERVIEW

### **The Sabre 42 Fly Bridge is a faster and quieter ride.**

The Sabre 42 Fly Bridge is the outcome of close discussions with Sabre's clients and owners. The results: a yacht with the same level of personal luxury and comfort our owners have come to expect, with the added benefit of a fly bridge for an open air experience. The bridge offers an efficient layout both for entertaining and cruising, and joystick-controlled pod drives provide confidence and security while maneuvering.

Inboard motors, pod drives, and expert hull design make the cruising experience quieter and more fuel efficient than with outboards, while simultaneously maintaining truly satisfactory cruising and WOT speeds. Interior spaces preserve their functionality, even with the addition of the bridge, making for an uncompromisingly luxurious experience. Owners continue to enjoy all the comfort and amenities available in our iconic [Salon Express](#) series, with the added open-air space of the bridge.

## SPECIFICATIONS

### Basic Information

Manufacturer:	Sabre	Boat Type:	Motor Yacht
Model:	42 Fly Bridge	Hull Material:	Fiberglass
Year:	2021	Hull Type:	Modified Vee
Category:	Power		

### Dimensions & Weight

Length:	42.00 ft	Draft - max:	3 ft 4 in - 1.01 meter
LOA:	46 ft - 14.02 meter	Bridge Clearance:	18 ft 11 in - 5.77 meter
Beam:	14 ft - 4.27 meter	Dry Weight:	31500 ft
Deadrise Aft:	16.00 °		

### Tank Capacities

Fuel Tank:	380 gallons - 2 tank(s)	Holding Tank:	60 gallons - 1 tank(s)
Fresh Water Tank:	140 gallons - 1 tank(s)		

### Accommodations

Total Cabins:	-	Crew Cabins:	-
Total Berths:	-	Crew Berths:	-
Total Sleeps:	6	Crew Sleeps:	-
Total Heads:	2	Crew Heads:	-
Captains Cabin:	No		

## FEATURES

### Standard Equipment

#### Hull

Modified Deep "V" Planing hull design, with shallow pod drive recesses.

16° deadrise at transom, 23° deadrise amidships.

ISO NPG white gelcoat w/vinylester back-up resin.

Bottom, topsides and transom resin-infused biaxial E-glass with Corecell foam core.

Stringer system biaxial E-glass with foam core.

Molded E-glass swim platform with molded-in anti-skid surface and under mount ladder

Hull side rubbing strakes.

PVC rub rail with stainless steel cap.

LP Painted double boot top.

Gold color recessed cove stripe.

#### Deck and Hardtop

ISO NPG gelcoat.

Resin-infused biaxial E-glass with balsa core.

Molded-in anti-skid deck surfaces.

Sliding aft salon door slides starboard to port.

Sliding windows in salon cabin sides.  
One fixed and one opening window in salon aft bulkhead.  
Hinged access door to side deck at helm.  
Flush, outward opening, transom door with latch.  
Anchor locker with slam latch.  
Large hatches with gas struts and compression hatches  
Stainless steel hand rails at each corner on aft coamings  
Large engine room hatch in main salon with compression latches.

### **Deck Hardware**

1 1/4" Diameter type 316 stainless steel perimeter rail system.  
(6) 12" Stainless steel cleats (2 fwd, 4 mid ship, 2 in aft cockpit).  
(1) 10" Stainless steel cleat to starboard of windlass as anchor rode tie off.  
(2) Custom cast stainless steel mid-rail line chocks.  
(2) Custom cast stainless steel skene chocks forward.  
(4) Cast stainless steel hawse pipes in transom and hull sides.  
Custom stainless steel bow pulpit with dual anchor roller.  
Anchor windlass, electric rope-chain type.  
Teak flag staff and socket on taffrail.  
Burgee staff for bow pulpit.  
(3) Lewmar Low Profile polished aluminum hatches w/screens.  
(6) Custom stainless steel opening port lights.  
Teak toe rails.  
Teak cabin side eye-brow.  
Custom cast stainless steel "SABRE" medallion.  
Raw water washdown system at bow.

### **Lower Helm Station**

Cummins DTS single lever electronic controls.  
One Cummins Smart Craft display (engine data, tank levels, vessel data, alarms).  
Triple windshield wipers with washers.  
Ritchie Compass.  
Switch controls for horn, running lights, anchor light, engine room blower and optional equipment.  
Stazo 400mm custom teak steering wheel with tilt helm and Sabre logo  
(1) Stidd N-series helm seat with Ultraleather fabric.

### **Propulsion**

Twin Cummins QSB 425hp 6.7 liter electronic, fresh water-cooled diesel engines.  
Twin CMD Zeus 3500 pod drives, with integrated steering and trim tabs.  
Volvo IPS 500 and 600 options available  
120A, 12V alternators each engine.  
(2) Exhaust by-pass mufflers.  
Engine room blower.  
Engine room vent ducts.  
Engine room floor with FRP anti-skid.  
White gelcoated engine room  
Mylar face foam noise barrier.

### **Fuel System**

(2) 190 gal diesel fuel tanks port and starboard.

Racor fuel filters with water in fuel probes.  
(2) x 2" "Diesel" deck fill plates.

### **Steering and Trim Systems**

CMD helm, with joystick.  
Trim tabs integrated in CMD Zeus pod drives.  
Autopilot integrated in CMD Zeus system.  
GPS receiver included.  
"Skyhook" GPS position hold system.

### **12VDC Electrical System**

Two AGM Group 31 dedicated engine start batteries.  
Two AGM 4D deep cycle ship's service batteries.  
One AGM Group 24 generator start battery.  
Remote control battery switches with controls at helm.  
Manual emergency battery crossover switch.  
Illuminated main circuit breaker distribution on bulkhead opposite galley.  
Digital battery monitor.  
Lighting:  
    LED cabin reading lights.  
    High output LED lights in the overhead.  
    Halogen strip lighting in appropriate locations.  
    LED engine room lighting.  
    Cockpit courtesy lights.  
    Tri-color lights over helm  
Marine-grade, tinned wire throughout.  
12VDC USB chargers at helm and in all cabins

### **120VAC Electrical Systems**

Onan 9.0 kw generator including:  
    Onan E Series display  
    Dedicated start battery.  
    Water lift muffler.  
    Cooling water intake strainer.  
    Sound shield.  
    Transfer switch.  
50A shore power cord on Glendining cord reel.  
Isolation transformer protecting shore power.  
Illuminated main circuit breaker distribution panel.  
Digital AC system monitor  
(1) 120V outlet in each cabin and (1) in engine room.  
All galley and head receptacles are GFI protected.  
Additional outlets positioned in locations appropriate for entertainment systems in main and forward cabin  
50amp, 3-bank battery charger  
Reverse cycle heat/ air conditioning in (3) zones.

### **Forward Stateroom**

Spacious Island Berth layout with 5" cushion. ¾" laminated trim.  
Cherry hull ceilings.  
(2) Drawers under berth. A/C return grills under drawers.

(2) drawers in bureau w/locker w/shelf above and single louvered door.  
Upper enclosed shelves with storage behind. Locker face to have (2) louvered doors.  
Recessed shelf with fiddle on starboard main bulkhead with 19" LED TV and DVD player.  
Large cedar lined hanging locker to port, with louvered door, shelf and hangar pole.  
Open shelf above port hanging locker.  
Teak and holly sole.  
Sound deadening soft headliner panels.  
Pocket door to forward stateroom.

### **Second Stateroom**

Double berth, 5" foam cushions, ¾" laminated trim.  
Cherry hull ceilings.  
(4) Drawers under berth, A/C return grille beside.  
Forward bulkhead storage locker, and shelf.  
Night stand with drawers below.  
Teak and holly sole.  
Sound deadening soft headliner panels.  
Pocket doors between lower foyer and second stateroom.  
Optional dinette available in this space.  
Surface mount LED TV

### **Head**

Stainless steel under mount oval sink.  
Circular shower stall with seat and locker outboard.  
Hot and cold pressure water  
Electric shower sump pump.  
Storage lockers.  
Solid surface vanity top with bull nose.  
Towel bar.  
Wood trimmed mirror over sink.  
Ventilation blower.

### **Galley**

Mid-level galley.  
Solid surface galley counter top.  
Stainless steel under mount sink with Scandvik faucet.  
Vitrifigo 2-drawer Refrigeration with stainless steel doors.  
Isotherm 1-drawer Freezer with stainless steel door.  
Two burner electric cook top.  
Convection microwave with stainless steel door above aft counter.  
Cabinet with (2) louvered doors on forward bulkhead.  
Drawers and storage lockers below counter.  
Built-in waste basket.  
Large drawer under microwave opens athwartships

### **Main Salon**

"L" settee to port, 5" foam cushions, with storage and Sabre tool drawer under. Sunbrella seat coverings.  
High Gloss finished folding table with hi-low pedestal, lowers to coffee table height.  
NOTE: when dinette option is selected the salon table is oval and not folding  
Settee to starboard with end table forward and entertainment unit with 32" LED flat screen TV on lift.

Sound deadening, soft headliner panels.  
Stidd N series helm chair

### **Decor**

Varnished cherry interior finish.  
Screens on all opening ports.  
Ocean Air screen/blinds on deck hatches.  
Ocean Air blinds on side windows and side door  
Optional fabric and drapery selections.  
Dovetailed maple drawer boxes

### **Fresh Water System**

Water capacity 140 gals.  
Stainless steel, 11 gal. hot water heater, operates on 110-VAC or engine heat.  
Temperature control valve on hot water supply.  
Hot and cold water pressure system 12V.  
Fresh water spigot in engine room.  
Transom shower, hot and cold.  
Shore water inlet with filter.

### **Waste Disposal**

Polyethylene holding tank with 60 gallon capacity.  
Jabsco Quiet Flush fresh water MSD.  
Diaphragm waste pump on holding tank.

### **Safety**

Fire extinguishers, (4) at 2 1/2 lbs.  
Marelon sea valves on all thru-hull fittings below waterline.  
Bonding system to safeguard against galvanic corrosion.  
Automatic fire extinguishing discharge system in engine space with override.  
(3) Automatic 12V electric bilge pumps.  
(3) High water switches and alarm.

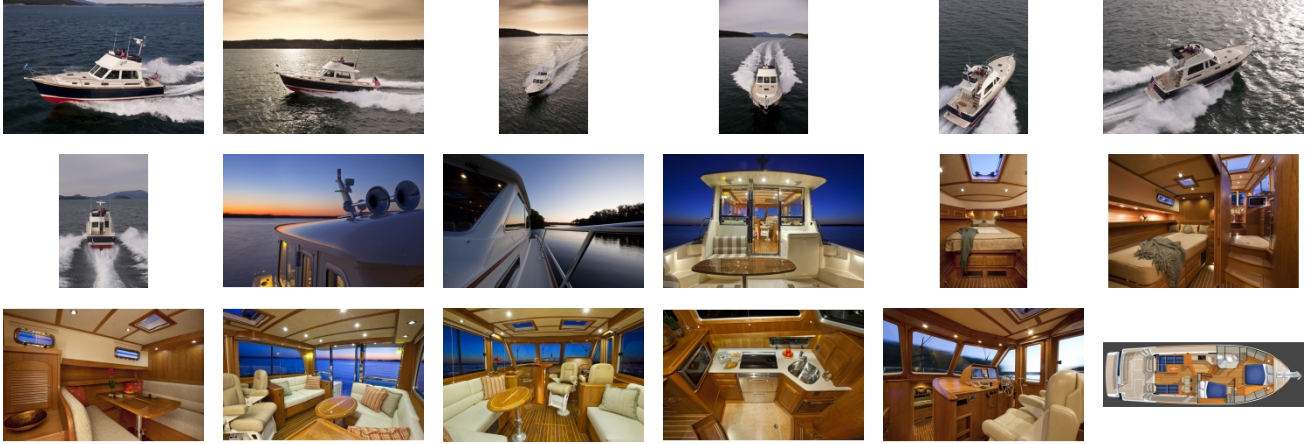
### **Fly Bridge Helm Station**

Cummins DTS single lever electronic controls.  
Single Cummins Smart Craft display (engine data, tank levels, vessel data, alarms).  
(2) Stidd N-series helm seats. (One in main salon)  
Table on fixed base  
L-settee dry storage below.  
16" Stainless steel steering wheel with tilt helm.  
Controls (see propulsion)  
Stainless steel flybridge ladder with teak treads.

### **External Links**

- [View All Specifications](#)SABRE 42 FLY BRIDGE

# GALLERY



**DimillosYacht Sales**  
1 Long Wharf, Portland, ME 04101  
Phone: 207-773-7632