



DimillosYacht Sales
1 Long Wharf, Portland, ME 04101
Phone: 207-773-7632

Sabre 54 Fly Bridge

Boat Type: Motor Yacht



OVERVIEW

All aspects and details of this magnificent yacht are executed with boat building skills passed down by generations of Maine craftsmen and women. By including in her design and systems the latest equipment and technology, Sabre Yachts has designed a superb cruising yacht. With the suggestions and opinions of many experienced owners, the Sabre Design Team found solutions and created features which greatly enhance the experience of cruising aboard the Sabre 54 Fly Bridge Sedan.

Her vee-hull, powered by Volvo Penta IPS II 950 engines and pods, offers smooth and powerful operation. The 54 Fly Bridge Sedan will cruise comfortably in the mid-twenty knot range with very low sound levels of just 75 db. AC Electrical services aboard are provided by an Onan 13.5Kw generator and her DC systems are 24 volt.

Her interior accommodations are elegant and comfortable. Beautiful woodworking throughout the yacht, pleasing proportions, and unusual details such as maple inlays and Shoji screens in the owner's cabin doors, create an atmosphere of luxury and warmth in the elegant Sabre 54 Fly Bridge Sedan.

SPECIFICATIONS

Basic Information

Manufacturer:	Sabre	Boat Type:	Motor Yacht
Model:	54 Fly Bridge	Hull Material:	Fiberglass
Year:	2017	Hull Type:	Modified Vee
Category:	Power		

Dimensions & Weight

Length:	54.00 ft	Draft - max:	4 ft 6 in - 1.37 meter
LOA:	59 ft 9 in - 18.21 meter	Bridge Clearance:	18 ft 1 in - 5.51 meter
Beam:	15 ft 10 in - 4.82 meter	Dry Weight:	54000 ft
Deadrise Aft:	15.00 °		

Tank Capacities

Fuel Tank:	-	Holding Tank:	-
Fresh Water Tank:	-		

Accommodations

Total Cabins:	-	Crew Cabins:	-
Total Berths:	-	Crew Berths:	-
Total Sleeps:	6	Crew Sleeps:	-
Total Heads:	2	Crew Heads:	-
Captains Cabin:	No		

FEATURES

Standard Equipment

Hull

Modified "V" planing hull design
23 degree deadrise amidships and 15 degree deadrise at transom
Reverse sloped transom
ISO NPG Sport Yacht white gel coat w/ vinylester back-up resin
Knitted Biaxial Structural E-Glass Reinforcements
Infused SAN Corecell foam core in hull bottom and topsides
Foam cored composite stringer system in way of engines and drives
Swim platform with under-mounted telescoping ladder
Hull side rubbing strakes
PVC rub rail with stainless steel cap
Painted (Urethane) Double Boot Strip
Gold Cove Stripe

Deck

ISO NPG gelcoat
VIP resin infused Knitted Biaxial Structural E-Glass Reinforcements with coring

Molded-in anti-skid deck surfaces
Recessed salon windows aluminum anodized
(2) anchor lockers w/Southco slam latch
Access hatch from aft cockpit to engine room
Aft facing seat in cockpit
Forward facing cockpit corner seating port and starboard
Center transom door

Fly Bridge

Stainless steel stair case with teak treads from cockpit to fly bridge spirals though 90 degrees
Venturi windscreen with tinted acrylic panels and stainless steel frame
Twin Stidd N series helm seats
Full engine and ships controls and panels
L-shaped lounge to starboard and aft of the helmsman
Stainless steel drinks fridge alongside mates seat

Deck Hardware

1 1/2" diameter type 316 stainless steel perimeter rail system
(4) stainless steel spring cleats
(2) stainless steel mooring cleats
(2) stainless steel stern cleats
Custom stainless steel dual anchor roller
24V Electric Windlass with controls at helm and foot switches on deck Lewmar V4
Flagpole holder and flagstaff
Bomar Low Profile stainless steel hatches w/screens
Oversized Stainless steel opening ports
Teak toe rails port and starboard with custom cast dual mid rail chocks and bow chocks
Teak cabin side eye-brow
Custom cast stainless steel "SABRE" medallion
SureShade retractable cockpit sun awning

Propulsion

Twin Volvo IPS 950 pod drives with Volvo Penta Interceptor trim tab system and Volvo DPS positioning system and VP Active Corrosion Protection system and (2) Volvo 7" color displays
Volvo autopilot with joystick steering
Fresh water-cooled
24V alternators each engine
Groco raw water intake strainers
Oil change system for engines, drive units and gen set
Engine room ventilation system 24v
Engine room intake ducts on cabin house side with stainless steel grill
White gelcoated engine room
White Mylar faced foam noise 2# barrier

Fuel System

700 gal diesel fuel.
Racor dual Max 1000 fuel filters
2" "Diesel" stainless steel deck fill plates port and starboard
Fuel Level Indicator at helm

240/120 VAC Electrical System

240/120 VAC 50 amp AC shore power system

One 75 ft. Glendinning Cord Reel aft

Boosting isolation transformer

13.5kW Onan Generator with sound enclosures

Automatic AC switching system for shore & generator power

4kW high output inverter with 120 Amp DC Charger for ships batteries

Main circuit breaker distribution panel in main salon

120V outlets in each cabin and one in engine room

All galley and head receptacles are GFI protected

60 Amp, battery charger for engine start batteries and back up for ships batteries

10 Amp, battery charger for gen set batteries

Reverse Cycle Heat/Air Conditioning

24 VDC Electrical Systems

Dedicated engine starting battery bank for each engine

Dedicated 24v 8D AGM deep cycle ship's service batteries

Helm remote controlled battery switches with manual override

Main circuit breaker distribution panel

Multiple 12v and USB outlets at helm and in interior for small personal appliances, phones

Tinned marine grade wire throughout

Dual Air Horn, Kahlenberg™

LED Navigation lights

Triple wiper/washer system

Lighting:

- Designer reading lights

- High output LED lights in the overhead

- LED bar lighting in appropriate locations

- LED Engine room lighting

- Selectable red, blue, white LED lights over helm

- Selectable red, blue, white LED lights Around hard top perimeter

- LED Cockpit courtesy lights

Forward Guest Stateroom

Spacious low queen island berth layout with 5" mattress. ¾" laminated trim.

Cherry hull ceilings

Drawers under bed.

Aft end of berth top hinges open to access blanket storage

Enclosed upper shelves to port and starboard of island berth with storage behind. Fwd most section open shelf w/stainless fiddle rail

Dimmable accent lighting below shelves and berth.

Large cedar lined hanging locker to starboard with closet pole.

Bureau to port with enclosed locker above

Built in 20" LED TV on forward facing bulkhead with DVD player

Screen/Shade for hatch

Private access to guest head/shower compartment

Teak and holly sole with sealer

Soft headliner panels

Shoji style door

Heat/Air Conditioning (10000 BTU)

Forward Guest / Day Head

Sink with faucet
Separate shower stall
Ceramic tile floor in WC compartment
Hot and cold pressure water
Storage lockers
Solid surface countertop
Stainless steel towel bars
Wood trimmed mirror over sink
Ventilation blower
Electric shower sump pump

Port Guest Stateroom

Upper and lower bunks
Drawers and storage below lower berth
Hanging locker forward
Built in 20" LED TV with DVD player
6000 btu air conditioning

Day Head

Day head forward of galley with fresh water MSD and wash basin
Large wood-framed mirror
Inside of head door mirrored

Galley

Toe kick space length of galley with courtesy lighting
Quartz countertop. Bull nosed edge overhangs cabinet below
Induction Electric cook top
Convection microwave oven
Fisher Pykel dish washer
Tall dish locker
120VAC galley exhaust fan
Sub Zero Stainless Steel 110 v two drawer fridge.
Sub Zero Stainless steel two drawer freezer
Bank of dovetailed drawers
Stainless steel under-mounted sink with designer faucet
Waste basket below sink
Dry storage outboard
Combo washer-dryer beneath stairs
Galley heat/ air conditioning (12000 BTU)
Office desk in lower galley

Master Stateroom

Double Shoji style doors lead to the large master suite
Spacious low queen island berth layout with 6" mattress. ¾" laminated trim
Inlaid head board.
Fixed hull port with Roman shade
Base of bed incorporates drawers and storage
Bureau/night stand with drawers forward side of bed

Cedar lined hanging lockers with shelf and closet pole aft of bed.
26" LED TV with DVD player
Shoji panel shades over opening portlights
Exclusive access to master head/oversized shower compartment through pocket doorway with Shoji style door
Full length mirror behind pocket door
Teak and holly sole with sealer
Stateroom air Conditioning (10,000BTU)
Soft headliner panels.
Designer vessel sink with faucet.
Separate shower stall rain shower head and glass shower door
Ventilation fan
Electric shower sump pump
Storage locker above WC
High gloss cherry counter with bull nose
Ceramic tile in head compartment and shower floor
Stainless steel towel bars
Wood trimmed mirror over sink

Decor

Screens and shades on opening ports and hatches
Optional fabric and drapery selections
Custom décor packages available
Dovetailed maple drawer boxes throughout

Fresh Water System

Water capacity approx. 200 gals.
20 gal. 140V hot water heater with heat exchanger
24VDC Headhunter X-Caliber primary pump on hot and cold water pressure system
24VDC secondary backup fresh water pump
Filters on fresh water pump system and shore water inlet
Fresh water coil hose in engine room
Salt water wash down at anchor locker

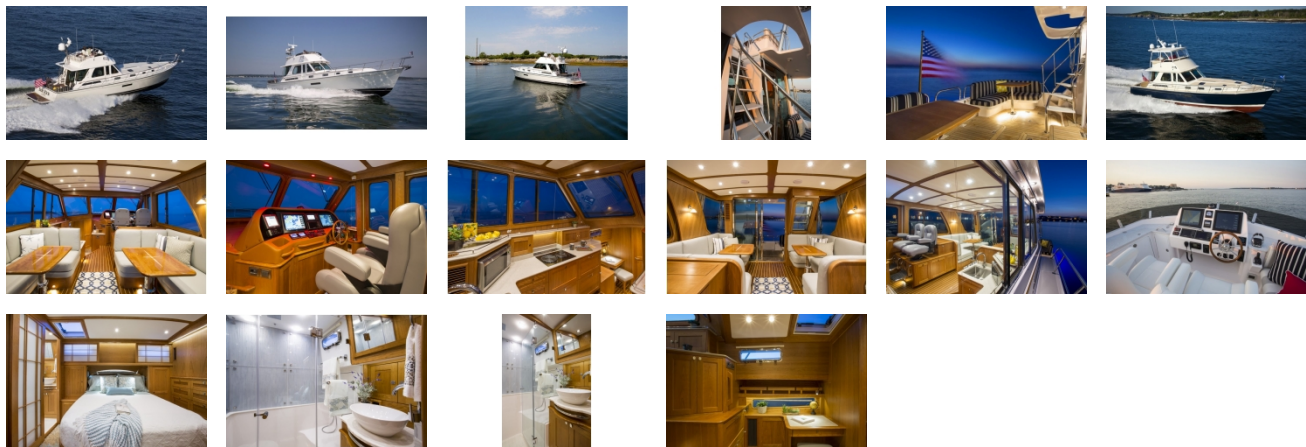
Waste Disposal

Polyethylene holding tank with 80 gallon capacity
Freshwater MSD's with white ceramic bowls
Diaphragm pump on holding tank to overboard sea valve

Safety

Fire extinguishers, (5) at 2 1/2 lbs.
Marelon sea valves on all below waterline fittings.
Bonding system to safeguard against galvanic corrosion
Automatic fire extinguishing discharge system with override
(3) Automatic electric bilge pumps 3700 GPH
(3) Bilge high water alarms

GALLERY



DimillosYacht Sales
1 Long Wharf, Portland, ME 04101
Phone: 207-773-7632