



East Coast Yacht Sales

No Address entered

Phone: 555-555-5555

# Vanquish 26 Runabout

Boat Type: Runabout



## OVERVIEW

### 26 Runabout

If our flagship 24 Runabout does not have enough features for you than consider the new 26 Runabout. The 26 RA has all the same class styling, now with outboard power. The centerline entertainment center features a flip out trash can, wet bar and space for the optional DC refrigerator and 120V electric grill. Standard seating for 8 and optional seating for 11 means that no one is left behind when a day of fun on the water is calling. The walk-through windshield makes everyone look like a pro when anchoring or handling lines while the interior hides over 100 cubic feet of storage space including two custom built-in storage spaces under the seat coolers.

SPECIFICATIONS

Basic Information

Manufacturer:	Vanquish	Boat Type:	Runabout
Model:	26 Runabout	Hull Material:	Fiberglass
Year:	2017	Hull Type:	
Category:	Power		

Dimensions & Weight

Length:	26.00 ft	Draft - max:	2 ft 6 in - 0.76 meter
LOA:	26 ft 8 in - 8.13 meter	Bridge Clearance:	-
Beam:	8 ft - 2.44 meter	Dry Weight:	4500 ft
Deadrise Aft:	16.00 °		

Tank Capacities

Fuel Tank:	75 gallons - 2 tank(s)	Holding Tank:	-
Fresh Water Tank:	14 gallons - 1 tank(s)		

Accommodations

Total Cabins:	-	Crew Cabins:	-
Total Berths:	-	Crew Berths:	-
Total Sleeps:	-	Crew Sleeps:	-
Total Heads:	-	Crew Heads:	-
Captains Cabin:	No		

FEATURES

STANDARD EQUIPMENT

CONSTRUCTION

- Vinyl ester epoxy resin hull laminate
- Closed cell foam core vacuum bagged to hull and deck
- Wood free, rot free design
- One-piece hull and deck liner
- Through-bolted hull-to-deck joint
- Silicone bronze through-hulls below water line
- Stainless steel through-hulls above water line
- Heavy-duty Aluminum fuel tanks (2)

HULL AND DECK

- Self-bailing cockpit
- Molded two-tone non-skid decking
- Stainless steel bow rail

- Anchor locker
- Gasket sealed in-floor storage locker (2)
- Stainless steel windshield header
- Hinged Windshield
- Ample bow storage
- Molded toe-kick
- Molded rub strake
- Stainless steel rub rail
- Swim platform
- Swim ladder
- 8" Stainless Steel Cleats
- American Flag with teak staff
- Vanquish Burgee with teak staff

## **MECHANICAL AND ELECTRICAL**

- Start and house battery
- Battery switch
- Fuel selector valve (port, starboard, both, off)
- Custom waterproof distribution panel
- Hydraulic steering system
- Edson steering wheel
- Electric engine hatch
- Bilge pump with automatic float switch
- Navigation lights
- LED courtesy lights
- Engine sea strainer
- ABYC color coded, tinned wiring
- Trumpet-style horn
- 12-Volt outlet
- USB Charging Port
- Mercury Smart Craft or Yamaha Command Link
- Digital Throttle and Shift
- Fresh water tank 14 USG

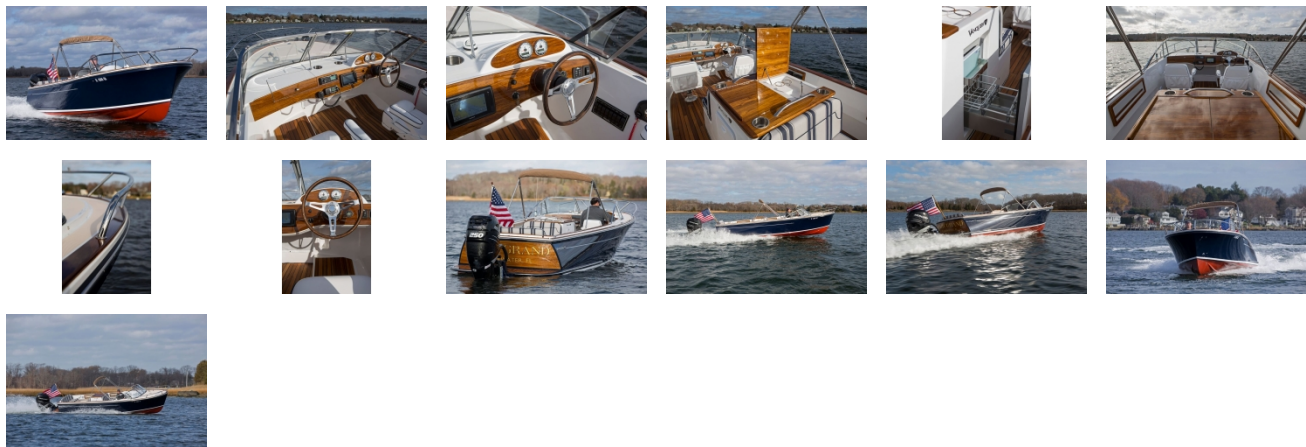
## **INTERIOR**

- Nautolex marine grade vinyl or Sunbrella upholstery
- Recessed drink holders (8) – stainless steel
- Flip-up bolster captain and co-captain seat
- Wet Bar with fresh water sink
- Glove Box
- Stainless Steel grab handles (4)

## **External Links**

- [26 Runabout](#)

GALLERY



**East Coast Yacht Sales**  
No Address entered  
Phone: 555-555-5555