



**Yachting Solutions**  
229 Commercial Street  
Rockport, ME, US  
Phone: (207) 236-8100

# Sealegs Interceptor 9000

Boat Type: Inflatable



## OVERVIEW

The Interceptor 9000 is the largest amphibious RIB ever produced, and is a dream for anyone needing a large platform for their adventures. The Interceptor 9000 comes in at 9m long, with massive space in front of the console, along the tubes and on either side of the Sealegs inboard engine box.

Add additional seating behind the console pedestal seats with an auxiliary bench seat, or choose to give yourself more space instead. The Interceptor 9000 is perfect as a dive boat or fishing craft - or as the workhorse for family excursions. Fit surfboards, paddleboards and more along the deck under the tube - the only limit is your imagination.

## The Benefits

- Single handed operation, giving one person the freedom to launch their boat by themselves
- Immediate access to and from the water — no waiting, backing trailers, winching or parking
- Embarking and disembarking no longer means getting wet
- Children can safely be in the boat at all times, avoiding possible accidents
- More time on the water, less time spent getting in and out of water
- The ability to explore places inaccessible in a traditional boat

- Greater use of your investment

## SPECIFICATIONS

### Basic Information

Manufacturer:	Sealegs	Boat Type:	Inflatable
Model:	Interceptor 9000	Hull Material:	
Year:	2017	Hull Type:	
Category:	Power		

### Dimensions & Weight

Length:	25.00 ft	Draft - max:	1 ft 4 in - 0.41 meter
LOA:	25 ft 11 in - 7.9 meter	Bridge Clearance:	-
Beam:	10 ft 3 in - 3.12 meter	Dry Weight:	4938 ft
Deadrise Aft:	23.00 °		

### Tank Capacities

Fuel Tank:	66 gallons - 1 tank(s)	Holding Tank:	-
Fresh Water Tank:	-		

### Accommodations

Total Cabins:	-	Crew Cabins:	-
Total Berths:	-	Crew Berths:	-
Total Sleeps:	-	Crew Sleeps:	-
Total Heads:	-	Crew Heads:	-
Captains Cabin:	No		

## FEATURES

### Craft Features

Each Sealegs craft is powered by Sealegs patented Amphibious Enablement System, or AES. The AES, including a fully marinised system of hydraulically powered legs and wheels, is powered by a marinised 22HP inboard engine. This allows the craft to travel for up to 30 minutes within every hour at 7.5kph on land.

The fully integrated, turn-key package uses the same fuel source as the outboard, and is simple to learn and engage. Over time, the AES technology has improved to allow owners more freedom to use their Sealegs amphibious craft.

All Sealegs craft come standard with All Wheel Drive (AWD). Both the front wheel and rear wheels have their own wheel motor. This allows for maximum traction and terrain capability when encountering beach inclines of soft sand, shell, shingle and/or pebbles.

AWD greatly increase the maneuverability of Sealegs craft, but if further traction is required, reducing the pressure in tires can further increase traction in difficult terrain. Finally, diff-lock is available as an option to augment the functionality of AWD.

The diff-lock option allows operators to force all wheels to turn in unison, regardless of traction (or lack thereof) available to all wheels. This, combined with AWD, will allow a Sealegs craft to overcome more extreme conditions.

Max Payload (including passengers): 500kg (1102lbs)

Max passengers: 8 Persons, including driver

Fuel Capacity – Petrol: Below deck 250 litre (66 U.S. Gallons)

Top speed Max (Water) - 300 HP: 40 knots (74kph/46 mph)

Maximum Outboard: 1x 300HP (223.7 kW), 2x 150HP (111.9kW each)

Top speed (Land): 7.5kph (5mph)

On-land power: Inboard Petrol engine, Briggs & Stratton 35HP (26kW) 4-stroke, air cooled

Drive (Land): All wheel drive, permanent with optional momentary diff lock

Brakes: Primary/Dynamic – Hydrostatic, Emergency/Automatic Park – Hydraulically released mechanical brake

Steering: Seastar power assisted hydraulic steering

Batteries: 74Ah (@20A) Deep Cycle (House), 1100CCA High Crank (Start)

Seating: Room for up to 8 Joltrider Suspension Seats or 2 pedestals and up to 2 auxilliary bench seats

Storage: Under-seat in front of console, port hatch in console, forward wet locker

Console: Wide console with fold-down windscreen

Tyres: 25"x 12" all terrain 6-ply tyres on 12" alloy rims

Tubes: 6 chamber, Hypalon tubes. 520mm diameter

Bowsprit and automatic windlass: Maxwell RC8-6. 6.5kg Stainless Delta anchor. 1.5m S.S. and 15m galv. chain (7mm) and 50m nylon rope (10mm) in enclosed locker.

Drainage and bilge: Dual scuppers, 1100gph (4164Lph) switchable bilge pump

Lighting: Dual LED marine headlights (land use only), LED navigation lights

Deck: 3M anti-slip deck tread

Approx. Range Estimate (Water): 260km (140 Nautical Mile) @ 4000 R.P.M.

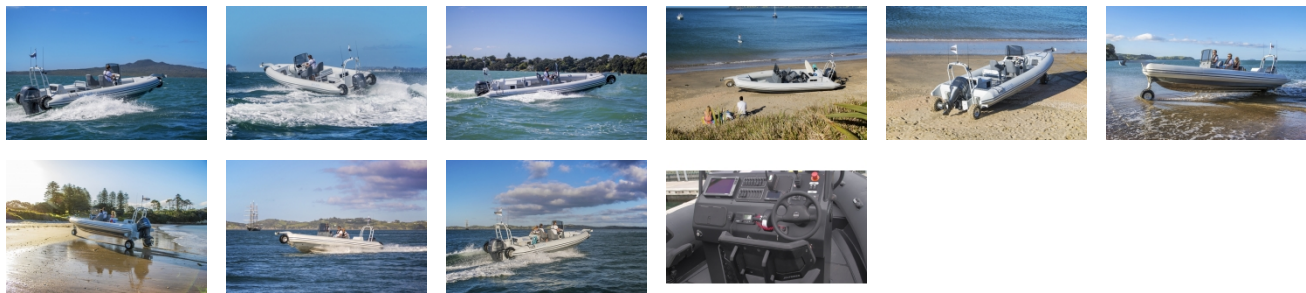
Run Time (Land): 30 min continuous use per hour

Maximum incline (Land): 14 Degrees (25% gradient) up or down, Avoid driving across a transverse incline.

Maximum sea conditions: Up to 4.0m (13' 1") wave height, Up to 40 knot (74kph/46 mph) winds

Certifications: CE Cat C, U.S.C.G.

GALLERY



**Yachting Solutions**  
229 Commercial Street  
Rockport, ME, US  
Phone: (207) 236-8100