



**Jefferson Beach Yacht Sales**  
24400 Jefferson Avenue,  
St. Clair Shores, MI 48080  
Phone: 866-490-5297

# Princess 68

Boat Type: Flybridge



## OVERVIEW

The Princess 68 is a breathtakingly beautiful craft. Her spacious flybridge includes a large sunpad, twin helm and a wetbar for on hand refreshment. On deck she provides ample entertaining space with both cockpit and foredeck seating and an inviting sunbathing area. Out at sea, her exhilarating performance feels light and responsive all the way up to speeds in excess of 30 knots. It's an altogether distinctive experience.

Inside, her appeal becomes all the more alluring. An aft-galley layout is perfectly placed to serve the cockpit, with triple sliding doors and an electrically opening aft window. Expansive areas of glass allow light to pour into the saloon, with the helm enjoying raised L-shaped seating to port for a more social journey. The master stateroom has a private stairwell and lobby, whilst guests enjoy a separate stairwell and three class-leading cabins.

SPECIFICATIONS

Basic Information

Manufacturer:	Princess	Boat Type:	Flybridge
Model:	68	Hull Material:	
Hull Type:		Category:	Power

Dimensions & Weight

Length:	68.00 ft	Draft - max:	5 ft 2 in - 1.58 meter
LOA:	69 ft 9 in - 21.26 meter	Bridge Clearance:	-
Beam:	17 ft 8 in - 5.39 meter	Dry Weight:	82673 ft
Deadrise Aft:	-		

Tank Capacities

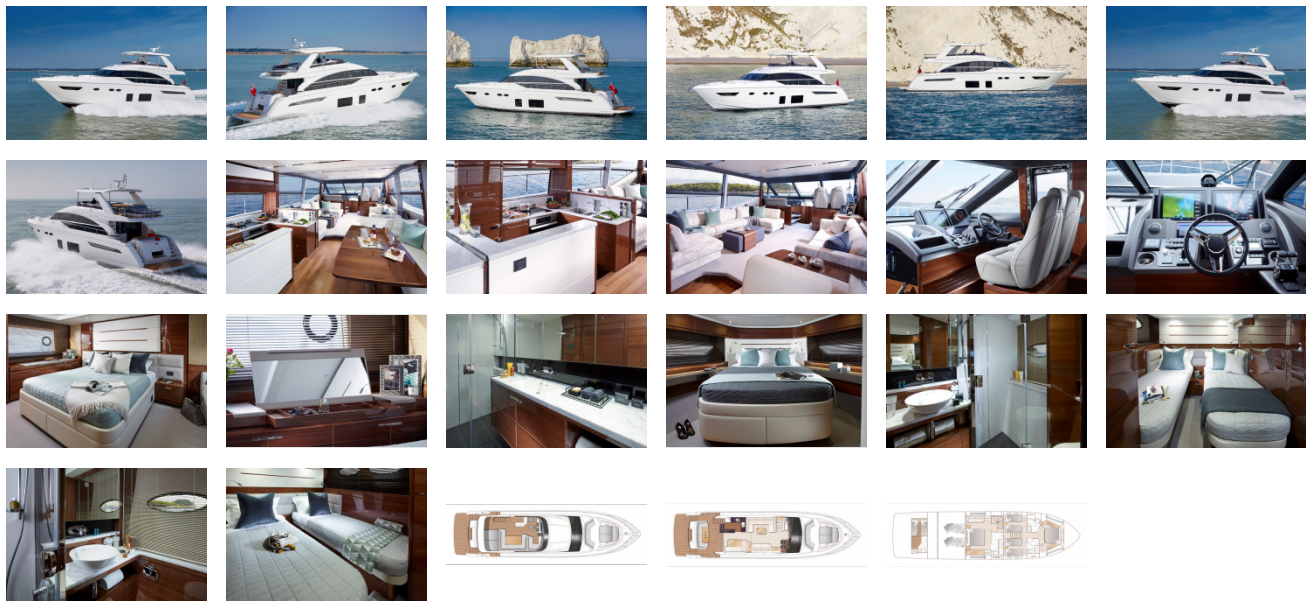
Fuel Tank:	1080 gallons - 1 tank(s)	Holding Tank:	-
Fresh Water Tank:	240 gallons - 1 tank(s)		

Accommodations

Total Cabins:	-	Crew Cabins:	-
Total Berths:	-	Crew Berths:	-
Total Sleeps:	-	Crew Sleeps:	-
Total Heads:	-	Crew Heads:	-
Captains Cabin:	No		

FEATURES

GALLERY



**Jefferson Beach Yacht Sales**  
24400 Jefferson Avenue,  
St. Clair Shores, MI 48080  
Phone: 866-490-5297