



Jefferson Beach Yacht Sales
24400 Jefferson Avenue,
St. Clair Shores, MI 48080
Phone: 866-490-5297

Princess V52

Boat Type: Cruiser



OVERVIEW

Streamlined in every sense of the word, the V52 is a symphony of agile performance, welcoming space and flexible on board comfort. Her main deck has a spacious saloon connected to the aft cockpit via triple sliding doors, and with a vast electric sunroof overhead, it's the perfect location for enjoying starry nights or early morning sunshine. The teak-laid hydraulic swimming platform makes a dip in the deep blue simply irresistible too.

Function and refined form are in perfect harmony everywhere you look. Below deck, adjacent to the fully equipped galley, the lower saloon can either be a social entertaining area or cleverly converted into additional berths. The full-beam owner's stateroom, with en suite bathroom and separate stall shower, is a luxuriously spacious haven. Guests are accommodated in the forward cabin which is fitted with scissor berths for added flexibility, there is also the option to specify a third guest cabin if required.

SPECIFICATIONS

Basic Information

Manufacturer:	Princess	Boat Type:	Cruiser
Model:	V52	Hull Material:	
Hull Type:		Category:	Power

Dimensions & Weight

Length:	52.00 ft	Draft - max:	3 ft 9 in - 1.14 meter
LOA:	53 ft 2 in - 16.21 meter	Bridge Clearance:	-
Beam:	14 ft 7 in - 4.44 meter	Dry Weight:	41900 ft
Deadrise Aft:	-		

Tank Capacities

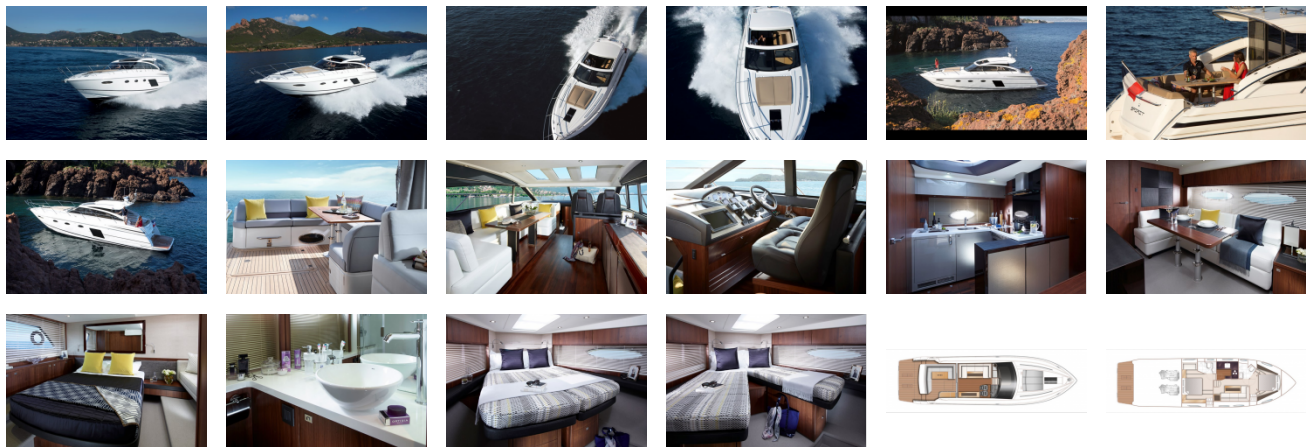
Fuel Tank:	528 gallons - 1 tank(s)	Holding Tank:	-
Fresh Water Tank:	125 gallons - 1 tank(s)		

Accommodations

Total Cabins:	-	Crew Cabins:	-
Total Berths:	-	Crew Berths:	-
Total Sleeps:	-	Crew Sleeps:	-
Total Heads:	-	Crew Heads:	-
Captains Cabin:	No		

FEATURES

GALLERY



Jefferson Beach Yacht Sales
24400 Jefferson Avenue,
St. Clair Shores, MI 48080
Phone: 866-490-5297