



**Jefferson Beach Yacht Sales**  
24400 Jefferson Avenue,  
St. Clair Shores, MI 48080  
Phone: 866-490-5297

# Princess S60

Boat Type: Motor Yacht



## OVERVIEW

Powerful yet elegant, the new S60 is unmistakably S Class. Her sleek exterior styling with sculpted hull glazing generates a dynamic, agile stance. With an optimised hull form spearheading her efficiency she can reach speeds of up to 38 knots. When at anchor her generous deck areas provide space for relaxation including a foredeck seating and sunbathing area, whilst a tender or jet ski can be quickly launched and stowed in the large stern garage. Her sociable main deck features a galley aft arrangement with open-plan dining area, and sliding doors with a fully opening window leading out to the cockpit.

Featuring generous headroom throughout, the S60 is no exception when it comes to Princess' renowned use of space and light. Below deck, six guests are accommodated across an en suite full-beam master stateroom and two further guest cabins. Blending iconic design, exceptional engineering and unrivalled craftsmanship the new S60 provides an unforgettable cruising experience.

## SPECIFICATIONS

### Basic Information

Manufacturer:	Princess	Boat Type:	Motor Yacht
Model:	S60	Hull Material:	
Hull Type:		Category:	Power

## Dimensions & Weight

Length:	60.00 ft	Draft - max:	4 ft 9 in - 1.45 meter
LOA:	62 ft 11 in - 19.18 meter	Bridge Clearance:	-
Beam:	16 ft - 4.88 meter	Dry Weight:	63619 ft
Deadrise Aft:	-		

## Tank Capacities

Fuel Tank:	859 gallons - 1 tank(s)	Holding Tank:	-
Fresh Water Tank:	159 gallons - 1 tank(s)		

## Accommodations

Total Cabins:	-	Crew Cabins:	-
Total Berths:	-	Crew Berths:	-
Total Sleeps:	-	Crew Sleeps:	-
Total Heads:	-	Crew Heads:	-
Captains Cabin:	No		

## FEATURES

### Deck Fittings

- Teak-laid transom platform, cockpit deck, sportbridge, sportbridge stairs and steps to side decks
- Reversible electric anchor winch with foredeck and helm position controls
- Self-stowing 32kg/77lbs Delta anchor with 40m of chain
- Storage lockers for rope, fenders and foredeck sunbed cushions
- Foredeck seating and sunbathing area
- Stainless steel cleats, fairleads and handrails
- LED deck level lighting
- Freshwater deck/anchor wash

### Cockpit

- U-shaped seating with teak folding table
- Sunbed aft with garage with electro-hydraulic door and tender launch system with electric winch below (3.3m tender)
- Twin transom gates leading to bathing platform with electro-hydraulic raise/lower mechanism, foldaway swimming ladder and hot and cold shower
- Waterproof speakers linked to deck saloon sound system
- Lockable gas strut assisted hatch to engine room, lazarette and optional crew cabin
- Liferaft storage
- Cockpit cover

### Sportbridge

- Helm position with repeat navigation equipment including radar/chartplotter and engine instrumentation
- Twin adjustable helm seats
- L-shaped seating area with folding teak table

- L-shaped seating to starboard (converts to sunpad)
- Wetbar with sink, top loading coolbox, storage and optional electric barbecue
- Radio/MP3 with waterproof speakers

### **Lower Helm Position**

- Twin adjustable helm seats
- Electric opening windows at helm position and port side
- Full engine instrumentation including fuel gauges, exhaust temperature, fuel contamination alarms and rudder position indicator
- Navigation system including colour radar, GPS and chartplotter, VHF/RT, speed and distance log, echo sounder with alarm and high speed magnetic compass
- Controls for bow thruster, windscreen wipers, bilge pump and trim tabs (with indicators)
- 24v and 240v control panel
- Red night lighting
- Toughened glass screen (clear for night vision)

### **Deck Saloon**

- Stainless steel framed sliding doors to aft cockpit with integrated opening window aft of galley
- U-shaped sofa with coffee table
- Entertainment centre incorporating 49" UHD LED TV on electric raise/lower mechanism and DVD/radio/MP3 system with surround sound system
- Sideboard unit with bottle and glass storage and refrigerator
- L-shaped dining area with folding table
- Skylights with reflecto-glass and sliding blinds (option of powered opening roof)

### **Galley**

- 4-zone ceramic hob
- Combination microwave/convection oven with grill
- Stainless steel sink with mixer tap
- Full height refrigerator/freezer
- Storage lockers, cupboards and drawers

### **Accommodation**

- All cabins and bathrooms feature opening portholes and air conditioning outlets
- All cabins feature 220/240v power points
- All mattresses pocket sprung (excluding optional crew)
- All bathrooms feature full shower stalls, electric freshwater toilets, extractor fan and 240v shaver points

### **Owner's Stateroom**

- Large double bed with drawers below
- Wardrobes with hanging and drawer storage
- Dressing table
- Sofa
- 40" UHD LED TV, DVD, radio/MP3
- En suite bathroom

### **Forward Guest Cabin**

- Large double bed with drawers below
- Wardrobe with shelves
- Dressing table
- Deck hatch
- Storage lockers
- En suite bathroom

### **Starboard Guest Cabin**

- Two single beds with drawers below (with the option of powered conversion to double)
- Wardrobe with shelves
- Storage lockers

### **Crew Cabin (Optional)**

- Single bed with storage below
- Wardrobe with shelf
- Storage lockers
- Bathroom with shower, electric freshwater toilet and washbasin

### **Interior Finish**

- Furniture in Rovere Oak with satin or high gloss finish. Walnut or Alba Oak available as an option
- Solid surface worktops and tiled floors in all guest bathrooms
- Solid surface worktops in galley
- Choice of high quality carpet and upholstery fabric from extensive range
- Curtains, blinds or sunscreens to all windows and portholes
- Timber-laid galley and dining area floors
- Optional crew cabin fitted with non slip safety flooring

### **Power and Drive Systems**

- 5-bladed propellers in nickel aluminium bronze
- Bow thruster (130kgf/287lbf)
- Power-assisted electro-hydraulic steering system with hydraulic back-up
- Electronic engine and gear shift controls
- Dripless shaft seals
- Engine room extractor fan with electronic time delay

### **Electrical System**

24 Volt:

- 4 x heavy duty batteries for engine starting
- 4 x heavy duty auxiliary batteries
- 60 amp battery charger charges both banks of batteries via an automatic switch charging system
- Remote battery master switches with control switch at main panel
- LED lighting throughout

220/240 Volt:

- 11kW diesel generator in own starting battery and specially silenced exhaust

- 50 amp shore support inlet
- Earth leakage safety trip, polarity check system, circuit breakers on all circuits
- Power points in all areas

### **Fuel System**

- Twin fuel tanks (in NS8 marine grade alloy) with interconnection system giving 715 gal/858 US gal/3250l capacity
- Fuel fillers on port and starboard side decks
- High capacity duplex fuel filters/water traps with audible and visual fuel contamination warning system
- Remote fuel cocks in cockpit locker

### **Water System**

- 116 gal/159 US gal/530l plus 16 gal/19 US gal/73l hot water calorifier and heated by engines and 240v immersion heater
- Water level gauge
- Deck filler
- Electric freshwater WC system with 55 gal/66 US gal/250l holding tank

### **Fire Extinguishers**

- Automatic/manual override fire extinguishers in engine room with warning system at both helm positions
- Hand-operated fire extinguishers in all cabins, galley and lower helm (5)

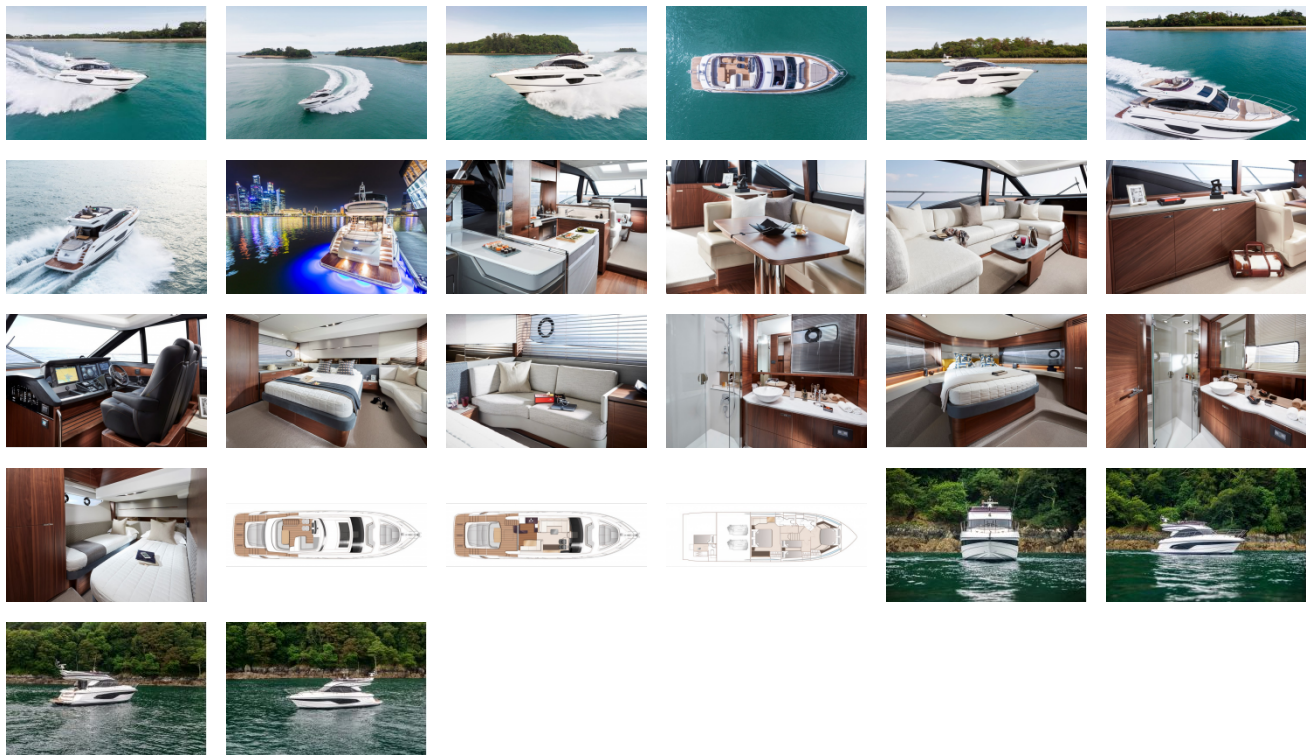
### **Bilge Pumps**

- Automatic electric bilge pumps (6)
- High-capacity manual bilge pump with valve system and suction points in same areas

### **Other Items Supplied as Standard**

- Ensign staff
- Fenders (6) and wraps (4)
- First aid kit
- Set of manuals
- Quilted bedspreads supplied to all cabins (except optional crew)

GALLERY



**Jefferson Beach Yacht Sales**  
24400 Jefferson Avenue,  
St. Clair Shores, MI 48080  
Phone: 866-490-5297