



**Jefferson Beach Yacht Sales**  
24400 Jefferson Avenue,  
St. Clair Shores, MI 48080  
Phone: 866-490-5297

# Princess S65

Boat Type: Motor Yacht



## OVERVIEW

There is an undeniable presence about the S65. Her slender streamlined form somehow also exudes a predatory air. A lightweight deep-V hull delivers on this promise with breath-taking agility up to 38 knots. When at anchor, peacefulness descends onto her generously appointed deck areas, which include a spacious foredeck seating area, whilst her hydraulic bathing platform and 3.3m tender garage become the perfect base for watersports.

Captivating on the outside, she is distinctively cool inside. Her sociable galley aft arrangement, with opposing open-plan dining area, has sliding doors and a fully opening electric window leading out to the cockpit to create an al fresco bar. Below deck eight guests are accommodated across four cabins, three of which are en suite.

## SPECIFICATIONS

### Basic Information

Manufacturer:	Princess	Boat Type:	Motor Yacht
Model:	S65	Hull Material:	
Hull Type:	Deep Vee	Category:	Power

**Dimensions & Weight**

Length:	65.00 ft	Draft - max:	4 ft 9 in - 1.45 meter
LOA:	66 ft 10 in - 20.37 meter	Bridge Clearance:	-
Beam:	16 ft 9 in - 5.11 meter	Dry Weight:	75566 ft
Deadrise Aft:	-		

**Tank Capacities**

Fuel Tank:	1083 gallons - 1 tank(s)	Holding Tank:	-
Fresh Water Tank:	230 gallons - 1 tank(s)		

**Accommodations**

Total Cabins:	-	Crew Cabins:	-
Total Berths:	-	Crew Berths:	-
Total Sleeps:	-	Crew Sleeps:	-
Total Heads:	-	Crew Heads:	-
Captains Cabin:	No		

**FEATURES**

**Deck Fittings**

- Teak-laid transom platform, cockpit deck, sportbridge, sportbridge stairs and steps to side decks
- Reversible electric anchor winch with foredeck and helm position controls
- Self-stowing 40kg/88lbs Delta anchor with 40m of chain
- Storage lockers for rope, fenders and foredeck sunbed cushions
- Foredeck seating and sunbathing area
- Stainless steel cleats, fairleads and handrails
- LED deck level lighting
- Freshwater deck/anchor wash

**Cockpit**

- U-shaped seating with teak folding table
- Sunbed aft with garage with electro-hydraulic door and tender launch system with electric winch below (3.3m tender)
- Twin transom gates leading to bathing platform with electro-hydraulic raise/lower mechanism, foldaway swimming ladder and hot and cold shower
- Waterproof speakers linked to deck saloon sound system
- Lockable gas strut assisted hatch to engine room, lazarette and optional crew cabin
- Lifteraft storage
- Cockpit cover

**Sportbridge**

- Helm position with repeat navigation equipment including radar/chartplotter and engine instrumentation
- Twin adjustable helm seats
- U-shaped seating area with folding teak table

- L-shaped seating to port
- Wetbar with sink, electric barbecue and storage
- Radio/MP3 with waterproof speakers
- Top loading coolbox at helm position

### **Lower Helm Position**

- Twin adjustable helm seats
- Helmsman's door to side deck and electric opening window to port
- Full engine instrumentation including fuel gauges, exhaust temperature, fuel contamination alarms and rudder position indicator
- Navigation system including colour radar, GPS and chartplotter (2 displays), VHF/RT, speed and distance log, echo sounder with alarm and high speed magnetic compass
- Controls for bow thruster, windscreen wipers, bilge pump and trim tabs (with indicators)
- 24v and 240v control panel
- Red night lighting
- Toughened glass screen (clear for night vision)

### **Deck Saloon**

- Stainless steel framed sliding doors to aft cockpit with integrated opening window aft of galley
- U-shaped sofa with coffee table
- Entertainment centre incorporating 49" UHD LED TV on electric raise/lower mechanism and DVD/radio/MP3 system with surround sound system
- Sideboard unit with bottle and glass storage, refrigerator and icemaker
- L-shaped dining area with folding table
- Skylights with reflecto-glass and sliding blinds (option of powered opening roof)

### **Galley**

- 4-zone ceramic hob
- Combination microwave/convection oven with grill
- Twin stainless steel sinks with mixer tap
- Full height refrigerator/freezer
- Dishwasher
- Storage lockers, cupboards and drawers

### **Accommodation**

- All cabins and bathrooms feature opening portholes and air conditioning outlets
- All cabins feature 220/240v power points
- All mattresses pocket sprung (excluding optional crew)
- All bathrooms feature full shower stalls, electric freshwater toilets, extractor fan and 240v shaver points

### **Owner's Stateroom**

- Large double bed with drawers below
- Wardrobes with hanging and drawer storage
- Dressing table
- Sofa
- 40" UHD LED TV, DVD, radio/MP3
- En suite bathroom

### **Forward Guest Cabin**

- Large double bed with drawers below
- Wardrobe with shelves
- Dressing table
- Deck hatch
- Storage lockers
- En suite bathroom

### **Starboard Guest Cabin**

- Two single beds with drawers below (with the option of powered conversion to double)
- Wardrobe with shelves
- Storage lockers
- En suite bathroom with day access

### **Port Guest Cabin**

- Two single berths with drawers below
- Wardrobe with shelves
- Storage lockers

### **Lower Accommodation Lobby**

- Combination washer/dryer and storage area is fitted in the lobby area with the option of fitting separate washing machine and tumble dryer

### **Crew Cabin (Optional)**

- Single bed with storage below
- Wardrobe with shelf
- Bathroom with shower, electric freshwater toilet and washbasin

### **Interior Finish**

- Furniture in Rovere Oak with satin or high gloss finish. Walnut or Alba Oak available as an option
- Solid surface worktops and tiled floors in all guest bathrooms
- Solid surface worktops in galley
- Choice of high quality carpet and upholstery fabric from extensive range
- Curtains, blinds or sunscreens to all windows and portholes
- Timber-laid galley and dining area floors
- Optional crew cabin fitted with non slip safety flooring

### **Power and Drive Systems**

- 5-bladed propellers in nickel aluminium bronze
- Bow thruster (170kgf/375lbf)
- Power-assisted electro-hydraulic steering system with hydraulic back-up
- Electronic engine and gear shift controls
- Dripless shaft seals
- Engine room extractor fan with electronic time delay

### **Electrical System**

24 Volt:

- 4 x heavy duty batteries for engine starting
- 4 x heavy duty auxiliary batteries
- 80-amp battery charger charges both banks of batteries via an automatic switch charging system
- Remote battery master switches with control switch at main panel
- LED lighting throughout

220/240 Volt:

- 13.5kW diesel generator in own starting battery and specially silenced exhaust
- 63-amp shore support inlet
- Earth leakage safety trip, polarity check system, circuit breakers on all circuits
- Power points in all areas

### **Fuel System**

- Twin fuel tanks (in NS8 marine grade alloy) with interconnection system giving 902 gal/1083 US gal/4100l capacity
- Fuel fillers on port and starboard side decks
- High capacity duplex fuel filters/water traps with audible and visual fuel contamination warning system
- Remote fuel cocks in cockpit locker

### **Water System**

- 176 gal/211 US gal/800l plus 16 gal/19 US gal/73l hot water calorifier and heated by engines and 240v immersion heater
- Water level gauge
- Deck filler
- Electric freshwater WC system with 60 gal/72 US gal/272l holding tank

### **Fire Extinguishers**

- Automatic/manual override fire extinguishers in engine room with warning system at both helm positions
- Hand-operated fire extinguishers in all cabins, galley, utility area and lower helm (6)

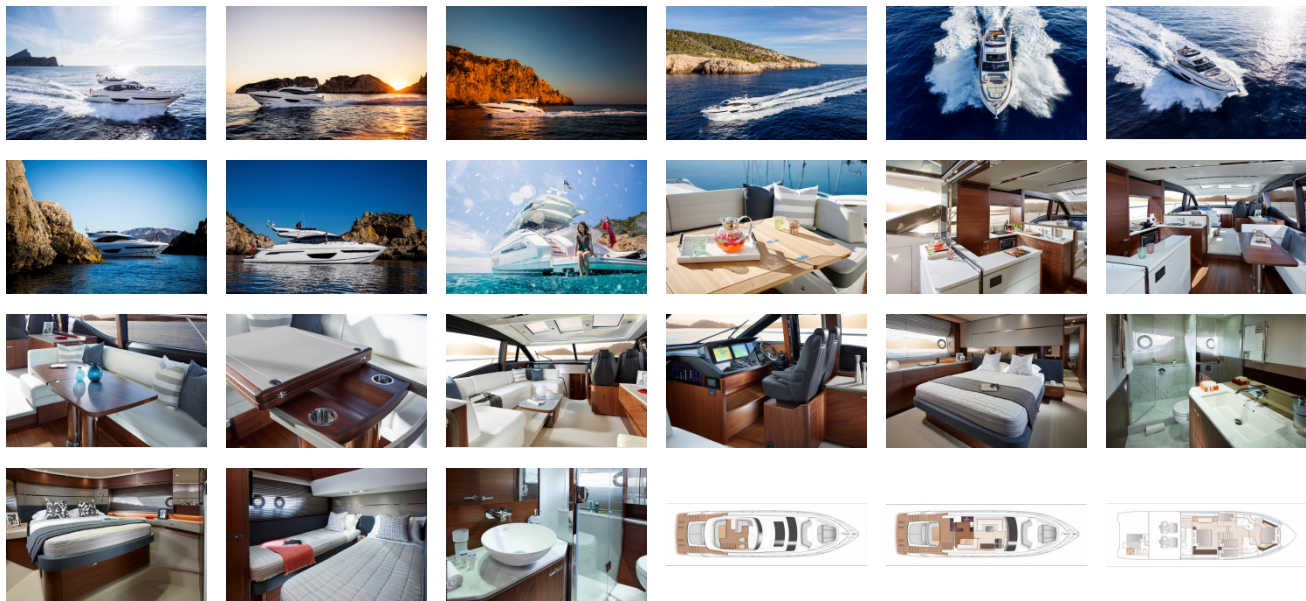
### **Bilge Pumps**

- Automatic electric bilge pumps (6)
- High-capacity manual bilge pump with valve system and suction points in same areas

### **Other Items Supplied as Standard**

- Set of cutlery, crockery and glasses (8)
- Ensign staff
- Fenders (6) and wraps (4)
- First aid kit
- Set of manuals
- Quilted bedspreads supplied to all cabins (except optional crew)

GALLERY



**Jefferson Beach Yacht Sales**  
24400 Jefferson Avenue,  
St. Clair Shores, MI 48080  
Phone: 866-490-5297