



Jefferson Beach Yacht Sales
24400 Jefferson Avenue,
St. Clair Shores, MI 48080
Phone: 866-490-5297

Sunseeker 131 Yacht

Boat Type: Motor Yacht



OVERVIEW

The tri-deck Sunseeker 131 Yacht epitomizes everything that is Sunseeker. Accommodating up to twelve guests in sublime surroundings, the sheer scale and layout of this immense yacht is awe-inspiring.

Expertly finished using ultra-modern materials and techniques, the 131 Yacht is one of the finest examples of modern day superyacht building. The main deck features a lounge, separate dining area and full galley, while on the upper deck you'll find the sky lounge, cocktail bar and access to the skydeck; where comfort and lavishness reach new levels. As impressive out in open water as it is in the harbour, this icon of design is unlike any other.

SPECIFICATIONS

Basic Information

Manufacturer:	Sunseeker	Boat Type:	Motor Yacht
Model:	131 Yacht	Hull Material:	
Hull Type:		Category:	Power

Dimensions & Weight

Length:	131.00 ft	Draft - max:	9 ft 4 in - 2.84 meter
LOA:	131 ft 5 in - 40.06 meter	Bridge Clearance:	-
Beam:	26 ft 7 in - 8.1 meter	Dry Weight:	417996 ft
Deadrise Aft:	-		

Tank Capacities

Fuel Tank:	5715 gallons - 2 tank(s)	Holding Tank:	383 gallons - 1 tank(s)
Fresh Water Tank:	1307 gallons - 1 tank(s)		

Accommodations

Total Cabins:	-	Crew Cabins:	-
Total Berths:	12	Crew Berths:	9
Total Sleeps:	-	Crew Sleeps:	-
Total Heads:	-	Crew Heads:	-
Captains Cabin:	No		

FEATURES

Sky Deck

- Built-in seating area on port side with tables
- Raised sunbathing area with cushions
- Large spa tub
- Wetbar in GRP finish with worktop and storage
- Refrigerator
- Icemaker
- Griddle
- Sink with tap
- Bar stools x 3
- Staircase leading to upper deck aft cockpit
- Radar arch structure
- Ensign staff in Carbon fiber
- High-level spotlights
- Low-level spotlights
- Non-slip deck finish
- Marine speakers
- Stainless steel safety rails around top of stairs
- Stainless steel aft and side safety rails

Upper Deck Aft Cockpit

- Rectangular dining table
- Freestanding chairs x 10
- Aft seating
- Sliding doors to upper deck saloon
- Servery top on port side

Steps leading to main deck aft cockpit
Staircase leading to sky deck
High-level spotlights
Teak-laid deck
Marine speakers
Stainless steel safety rails around top of stairs
Stainless steel side and aft safety rails

Upper Deck Saloon

L-shaped settee and inboard seat
Low coffee table or ottoman
Bar with stone countertop
Refrigerator
Icemaker
Bar stools x 3 (freestanding)
Cocktail cabinet with glass stowage
Overhead lighting with dimmers
Table lamp
Air conditioning
AC sockets
Fitted carpet
Side windows with blinds
Lacquered bulkheads
Television and AV system
Telephone point
Data point (RJ45)
Sliding doors leading to upper deck cockpit area

Upper Deck Day Head

Overhead lighting
Extractor fan
Toilet (240v)
Washbasin
Taps
Soap dispenser
Towel rail
Toilet roll holder
Toilet brush and holder
Stone floor
Stone vanity top
Mirror
Air conditioning outlet
Side window with venetian blind
Lacquered bulkheads

Upper Deck Servery

Storage cabinets & drawers
Sink with tap

Overhead lighting
AC sockets
Telephone point
Air conditioning
Dumb waiter from lower deck
Full-height fridge
Stone flooring
Stone worktop
Side window with venetian blind

Upper Deck Lobby

Overhead lighting
AC socket
Fitted carpet
Lacquered bulkheads
Doors leading to day head, servery and wheelhouse
Access to upper deck saloon

Captain's Cabin (Upper Deck)

Double berth with sprung mattress, pillows and bedspread
Storage beneath berth
Security safe
Wardrobe with hanging rail
Storage cupboards
Desk with stool
Mirror
Bedside table
Television and AV System
Bedside lights
Overhead lighting
Air conditioning
AC socket
Telephone point beside desk
Data point (RJ45)
Fitted carpet
Side windows with blind
Lacquered bulkheads
Doors leading to en suite and wheelhouse

Captain's Cabin En Suite (Upper Deck)

Lockers and shelves
Mirror
Extractor Fan
Razor socket
Overhead lighting
Shower cubicle
Toilet (240v)
Washbasin

Tap
Air conditioning outlet
Soap dispenser
Toilet roll holder
Towel rails
Toothbrush holder
Robe hooks
Toilet brush and holder
Stone vanity top
Stone flooring

Wheelhouse

Single helm seat
Observation settee with table
Chart table area with storage
Main engines single-lever electronic controls
Engine monitoring
Engine ignitions
Trim tab control
Bow thruster control
Satellite compass
Radar
Chart plotter display
GPS
Autopilot
Depth and speed display
VHF with DSC
Search light control
Touchscreen monitoring of boat systems
Windscreen wipers with glass-washing system
Demisting fans for windscreen
Telephone point
AC sockets
Air conditioning
Chart light
Overhead lighting
Low-level floor lights
Radio/CD player with two speakers
Timber floor
Lacquered bulkheads
Side deck door on each outboard side to access
wheelhouse deck, foredeck and side decks
Doors leading to captain's cabin and lobby

Wheelhouse Deck

Raised Sunpads with folding back rests
Low-level light
Teak-laid deck
Lockers
Marine speakers

Remote control spotlight located on wheelhouse roof

Twin horns located on wheelhouse roof

Anchor Deck

2 x anchor windlasses with hand control

2 x hawses with roller, chain stopper and devil's claw

2 x anchors with galvanized chain

2 x mooring bollards and 4 x fairleads

2 x fairleads with integrated bollards at mid-ships

Anchor chain wash

Fresh water deck wash with outlet

Non-slip anchor deck area

Low-level lights

Main Deck Aft Cockpit and Bathing Platform

Fixed seating with cushions

Low-level table in natural teak finish

Sliding doors to main deck saloon

Steps leading to bathing platform

Staircase leading to upper deck aft cockpit

Teak-laid deck and side decks

Side access door to engine room

High-level lights

Low-level lights

Marine speakers

Stainless steel side and aft safety rails

Main Deck Saloon

Aft consoles with stone tops

Large sofas

Armchairs x 4

Coffee table

Television on rise and fall and AV system

Table lamps

Air conditioning

Overhead lighting with dimmers

AC sockets

Telephone point

Data point (RJ45)

Fitted carpet

Side windows incorporating full height glass with curtains

Stone flooring at aft entrance

Lacquered bulkheads

Main Deck Dining Area

Dining table

Leather upholstered chairs x 10

Sideboards with storage

Overhead lighting with dimmers
Air conditioning
AC sockets
Chinaware, glassware and cutlery – complete sets for
12 people with stowage
Fitted carpet
Side windows with blinds
Lacquered bulkheads
Door leading to galley servery
Access through to starboard side lobby

Main Deck Starboard Side Entrance Lobby

Storage cupboard
Watertight side door leading to starboard side deck
Overhead lighting
AC socket
Fitted carpet
Lacquered bulkheads
Staircase to upper and lower decks
Doors leading to day head and master stateroom

Main Deck Day Head

Overhead lighting
Extractor fan
Toilet (240v)
Washbasin
Taps
Soap dispenser
Towel rail
Toilet roll holder
Robe hook
Toilet brush and holder
Stone floor
Stone vanity top
Mirror
Side window with Venetian blind
Lacquered bulkheads

Main Deck Master Stateroom

Double berth with storage in base
Sprung mattress
Bedside cabinets with storage
Two chairs
Coffee table
Dressing table
Low back chair for dressing table
Wardrobes with hanging rail and low-level storage
Television and AV system

Mini bar fridge and glassware (2 x Champagne & 2 x Highball) with stowage
Bedside lights
Overhead lighting with dimmers
Wardrobe lighting
Telephone point
Data point (RJ45)
AC sockets
Air conditioning
Fitted carpet
Security Safe in wardrobe
Lacquered bulkheads
Side windows with curtains
Stairs leading to en suite
Doors to toilet room and walk-in wardrobe

Main Deck Master Toilet Room

Storage lockers and shelves
Washbasin
Toilet (240v)
Bidet
Mirror
Taps
Soap dispenser
Towel ring
Toilet roll holder
Toilet brush and holder
Robe hooks
Overhead lighting
Extractor fan
Stone flooring
Stone vanity top
Side window with Venetian blind
Lacquered bulkheads

Main Deck Master En Suite

Storage lockers and shelves
Spa type bath or large shower room
Shower cubicle depending on above
Two Washbasins
Mirrors
Taps
Soap dispenser
Towel rails
Toothbrush holders
Overhead lighting
Razor socket
Air conditioning outlet
Extractor fan

Stone flooring
Stone vanity top
Side windows with Venetian blinds
Lacquered bulkheads

Lower Deck Lobby

Stone console top
Storage cupboard
Staircase lighting
Overhead lighting
AC socket
Fitted carpet
Lacquered bulkheads
Doors leading to lower deck guest cabins

Starboard Aft Double Guest Stateroom

Double berth with sprung mattress, pillows and bedspread
Storage under berth
Bedside cabinets
Storage units
Dressing table with lift-up lid (mirror on inside) and piano stool
Wardrobes with hanging rail and lighting
Security Safe
Television and AV system
Bedside lights
Telephone point
AC sockets
Overhead lighting
Air conditioning
Fitted carpet
Side windows with storm shutters and blinds
Mirrors
Emergency escape hatch
Lacquered bulkheads
Doors leading to en suite and lobby

Starboard Aft Double Guest En Suite

Lockers and shelves
Razor socket
Extractor fan
Overhead lighting
Two Washbasins
Taps
Shower cubicle with door
Toilet (240v)
Air conditioning outlet
Soap dispenser

Toilet roll holder
Towel rails
Toothbrush holders
Robe hooks
Toilet brush & holder
Stone vanity top
Stone flooring
Mirror
Porthole with storm shutter and Venetian blind
Lacquered bulkheads

Port Aft Double Guest Stateroom

Double berth with sprung mattress, pillows & bed spread
Storage under berth
Bedside cabinets
Storage units
Dressing table with lift up lid (mirror on inside) and piano stool
Wardrobes with hanging rail and lighting
Security Safe
Television and AV system
Bedside lights
Telephone point
AC sockets
Overhead lighting
Air conditioning
Fitted carpet
Side windows with storm shutters and blinds
Mirrors
Emergency escape hatch
Lacquered bulkheads
Doors leading to en suite and lobby

Port Aft Double Guest En Suite

Lockers and shelves
Razor socket
Extractor fan
Overhead lighting
Two Washbasins
Taps
Shower cubicle with door
Toilet (240v)
Air conditioning outlet
Soap dispenser
Toilet roll holder
Towel rails
Toothbrush holder
Robe hooks
Toilet brush & holder
Stone vanity top

Stone flooring
Mirrors
Porthole with storm shutter and Venetian blind
Lacquered bulkheads

Starboard Forward Twin Guest Stateroom

Two single berths with sprung mattress, pillows and bedspread
Storage under berths
Bedside cabinet
Wardrobe with lighting
Security Safe
Drawer unit
Television and AV system
Bedside lights
Overhead lighting
Telephone point
AC sockets
Air conditioning
Fitted carpet
Side windows with storm shutters and blinds
Emergency escape hatch
Lacquered bulkheads
Door leading to en suite

Starboard Forward Twin Guest En Suite

Lockers and shelves
Razor socket
Extractor fan
Air conditioning outlet
Overhead lighting
Washbasin
Taps
Shower cubicle with glass door
Toilet (240v)
Soap dispenser
Toilet roll holder
Towel rails
Toothbrush holder
Robe hooks
Toilet brush & holder
Stone vanity top
Stone flooring
Mirror
Porthole with storm shutter and Venetian blind
Lacquered bulkheads

Port Forward Twin Guest Stateroom

Two single berths with sprung mattress, pillows and bedspread

Storage under berths
Bedside cabinet
Wardrobe with lighting
Security Safe
Drawer unit
Television and AV system
Bedside lights
Overhead lighting
Telephone point
AC sockets
Air conditioning
Fitted carpet
Side windows with storm shutters and blinds
Emergency escape hatch
Lacquered bulkheads
Doors leading to en suite and lobby

Port Forward Twin Guest En Suite

Lockers and shelves
Razor socket
Extractor fan
Air conditioning outlet
Overhead lighting
Washbasin
Taps
Shower cubicle with glass door
Toilet (240v)
Soap dispenser
Toilet roll holder
Toothbrush holder
Robe hooks
Toilet brush and holder
Stone vanity top
Stone flooring
Mirror
Porthole with storm shutter and Venetian blind
Lacquered bulkheads

Galley (Main Deck)

Storage cabinets and overhead lockers
Five-burner ceramic electric hob
Extractor fan ducted externally
Electric convection oven x 2
Microwave with grill
Full-height fridges x 2
Full-height freezer x 1
Dishwasher
Coffee maker (freestanding)
Overhead lighting

CD radio with two speakers
Air conditioning
AC sockets
Telephone point
Two sinks
Waste disposal unit in sink
Taps
Non-slip safety flooring
Stone worktop
Rubbish bin
Side windows with Venetian blinds
Doors leading to crew lobby and galley servery

Galley Servery (Main Deck)

Storage cabinets and overhead lockers
Watertight side door leading to port side deck
Under counter wine cooler
Icemaker
Dumb waiter to upper deck servery
Overhead lighting
AC sockets
Air conditioning outlet
Non-slip safety flooring
Stone worktop
Doors leading to dining area and galley

Crew Lobby (Main Deck)

Entrance doors from main deck lobby and galley
Stairs leading down to crew quarters
Overhead lighting
Lacquered bulkhead finish
Non-slip safety flooring

Crew Mess (Lower Deck)

Fixed dinette table with sofa
Storage cabinets and overhead lockers
Television and AV system
Microwave
Under counter fridge
Slim-line dishwasher
AC sockets
Management monitoring panel
Telephone point
Data point (RJ45)
Overhead lighting
Air conditioning
Sink with tap
Stone worktop

Chinaware, glassware and cutlery for 8
Portholes with storm shutters and blinds
Laminate bulkhead finish
Non-slip safety flooring
Doors leading to crew cabins
Stairs leading to main deck

Engineer's Cabin (Lower Deck Aft Port)

1 x bunk berth with foam mattresses, pillows and bedspread
Wardrobe and lockers
Mirror
CD/radio with two speakers
Bedside lights
Overhead lighting
Air conditioning
AC socket
Telephone point
Fitted carpet
Porthole with storm shutter and curtains
Door to lobby

Engineer's Cabin En Suite (Lower Deck Aft Port)

Lockers and shelves
Mirror
Extractor fan
Razor socket
Overhead lighting
Shower
Toilet (240v)
Washbasin and Tap
Toothbrush holder
Toilet roll holder

Starboard Aft Crew Cabin (Lower Deck)

Single berth with foam mattress, pillows and bedspread
Storage lockers
Wardrobe
Mirror
Air conditioning
Overhead lighting
Bedside lights
AC socket
CD/radio with 2 speakers
Non-slip safety flooring
Porthole with storm shutter and curtains
Door to crew mess

Starboard Aft Crew Cabin En Suite (Lower Deck)

Storage lockers
Mirror
Extractor fan
Razor socket
Overhead lighting
Shower (240v)
Toilet
Washbasin and Tap
Toothbrush holder
Toilet roll holder

Port Mid Crew Cabin (Lower Deck)

Twin-bunk berths with foam mattresses, pillows and bedspread
Storage lockers
Wardrobe
Mirror
Air conditioning
Overhead lighting
Bedside lights
AC socket
CD/radio with 2 speakers
Non-slip safety flooring
Porthole with storm shutter & curtains
Door to crew mess

Port Mid Crew Cabin En Suite (Lower Deck)

Storage lockers
Mirror
Extractor fan
Razor socket
Overhead lighting
Shower
Toilet (240v)
Washbasin and Tap
Toothbrush holder
Toilet roll holder

Port Forward Crew Cabin (Lower Deck)

Single berth with foam mattress, pillows and bedspread
Storage lockers
Wardrobe
Mirror
Air conditioning
Overhead lighting
Bedside lights
AC socket

CD/radio with two speakers
Non-slip safety flooring
Porthole with storm shutter and curtains
Door to crew mess

Port Forward Crew Cabin En Suite (Lower

Deck)
Storage lockers
Mirror
Extractor fan
Razor socket
Overhead lighting
Shower
Toilet (240v)
Washbasin and Tap
Toothbrush holder
Toilet roll holder

Laundry (Stern)

Washing machine
Tumble dryer
Sink with tap
Overhead lighting
AC socket
Telephone point
Air conditioning
Non-slip safety flooring

Covers

Main Aft Deck. Seating cover and table cover.
Upper Aft Deck. Seating cover and table cover.
Sky Deck. Seating cover, table cover, bar stool covers, wet bar, Sunpad and spa tub cover.
Wheelhouse Deck. Cushions cover

Miscellaneous

1 x set Egyptian cotton sheets consisting of, mattress protector, 1 x fitted bottom sheet, 1 x flat top sheet, 1 x Oxford style and 1 x Housewife pillowcase per person
1 x set of towels per person
10 x large fenders with ties
3 x 20m black docking lines
2 x 15m black docking lines
1 x 10m black docking line
Mosquito screens for all openable port-lights

Machinery and Systems Compartments

Central hydraulic system providing hydraulic power for Bow thruster, Stern thruster (if specified), Stabilisers (if specified), Foredeck windlasses and Aft deck warping capstans

Oil exchange system for engines and generators
Chilled water air conditioning unit
Air intakes fitted with mist eliminator and emergency shutdown flaps
Air extraction fans 400v AC
Fresh water pressure set - 400v AC
Fire hydrant system + pumps – 400v AC
Bilge pumping system + pumps – 400v AC
Basic Toolkit – Please check
Fluorescent lights (AC)
Fire alarm system
Fuel transfer system – 400v AC - + hand operated pump.
Electro/hydraulic power pack – 400v AC providing power steering
Electro/hydraulic power pack – 400v AC controlling
Tender garage door, Tender garage door locking pins,
Tri tabs, Tender recovery winch and Bathing platform.
Fixed firefighting system – FM200 – Manual operation
Electrical outlets
Power management system
Portable CO2 fire extinguisher

Underwater Gear

Bow thruster – hydraulic engine driven
Seawater strainers
Full cathodic bonding system to zinc anodes
Hydraulic trim tabs – stainless steel
Propeller shafts – Duplex F51 – high-grade stainless steel
High performance rudders – Nibral
P-brackets – AB2 Nickel Aluminium bronze c/w water lubricated bearing.
Self-aligning shaft seal including spare seal
5-blade NAB bronze propellers

Fuel System

Fuel is stowed in two tanks – Daily service and Bunker tank.
Main engines and generators draw and return fuel from the Daily Service tank.
Daily service tank shall be replenished, via transfer pump(s) from the bunker tank
In the event of failure there is a hand operated pump.
Bunkering to both tanks through individual filling stations, port and starboard. Fuel then passes through a tank-viewing port into the filling and transfer manifold
Tanks will have a permanently open vent to the sky deck hardtop
Fuel level indication – displayed on Tijssen MPA system
Daily service tank and bunker tanks are fitted with type approved level sender
Emergency fuel shut-off valves to main engines and generators – located on tank hatch. Valves remotely operated and actuated from the fire control locker with local manual override

Systems

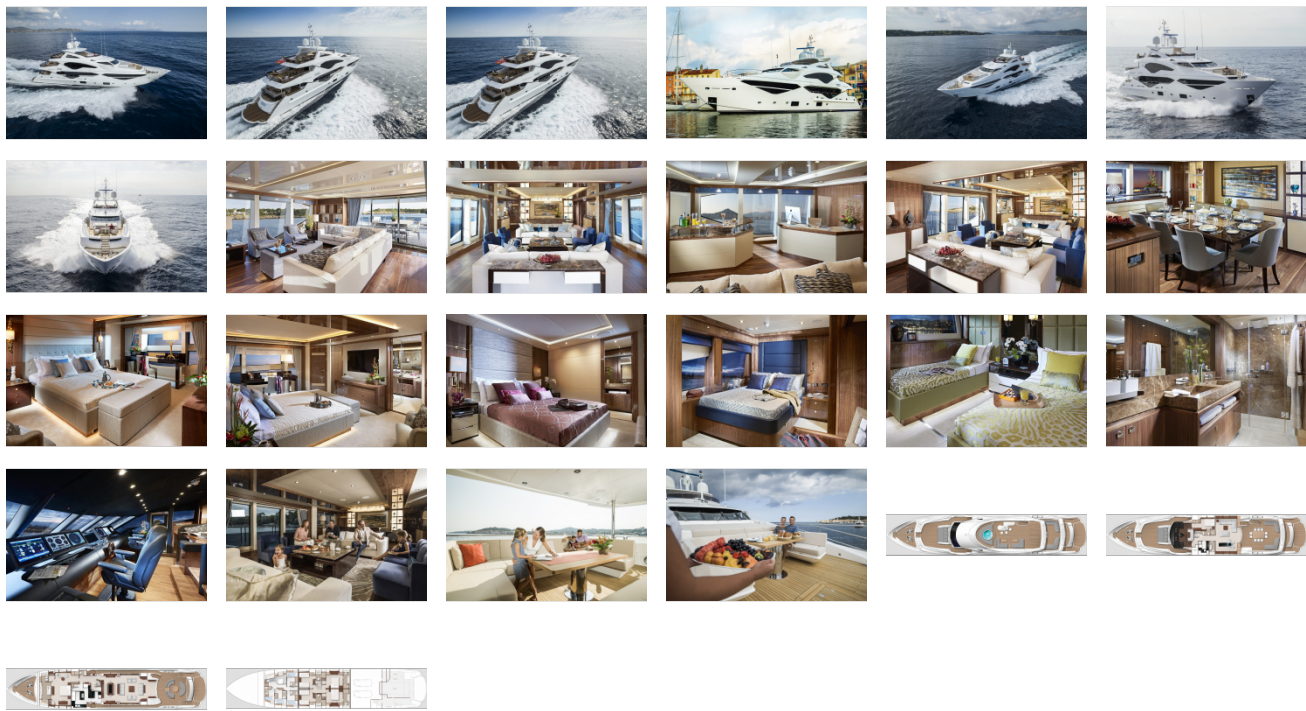
Electric toilet system with integral macerator (230v) with two-switch control
Toilets discharging to a 1450 Lt black water tank
Black water tank discharging by a 400v AC macerating pump to a shore side facility or directly overboard

Fresh water stowed in a 4950 Lt fresh water tank with analogue level measurement
 Water pressure system - 400v AC
 Water maker system – 400vAC
 Hot water tanks – 2 x 200 Lt
 Hot water circulating pump 220v AC
 Washbasins and showers drain to grey water transfer units.
 Grey water transfer units transfer grey water into the 1350 Lt grey water tank
 Grey water tank discharging by a 400v AC macerating pump to the black water tank or directly overboard.
 Chilled water air conditioning system (reverse cycle) 400v AC
 Each area/cabin shall have room mounted variable speed AU HV air handling units
 Fire hydrant system supplying 4 fire hydrants.
 Hydrants supplied by either 400v AC pump or Diesel engine powered pump
 Bilge system with suctions across the vessel
 Bilge water drawn by either 400v AC pump or Diesel engine powered pump
 Machinery space has a separate engine driven bilge pump
 Garage space has a separate engine driven bilge pump
 Fixed firefighting system – FM200 – Manual operation
 Central hydraulic system providing hydraulic power for
 Bow thruster, Stern thruster (if specified), Stabilisers (if specified), Foredeck windlasses and Aft deck warping capstans
 Electro/hydraulic power pack – 400v AC providing power steering
 Electro/hydraulic power pack – 400v AC controlling
 Tender garage door, Tender garage door locking pins,
 Tri tabs, Tender recovery winch and Bathing platform.

Electrical System

Vessels for all markets will be specified with 230/400 Volts 50Hz ac 3 phase power supplies and equipment. Vessels entering the United States markets will be supplied with additional equipment to provide the necessary 120V 60Hz single phase supplies for power receptacles and AV systems.
 2 x 70kW 400/230V 3 phase 50Hz generators with underwater silent exhaust and sound shield
 Tijssen Marine Personal Assistance touch screen based control system which facilitates control and monitoring of all the main ship systems including but not limited to, tank levels, alarms and monitoring, pump control, bilge status and all electrical load management.
 90 kVA shore power converter
 Two dockside AC 125A connection. One power assisted cable retrieval system and one loose cable.
 Semi-automatic AC power management.
 24v DC electrical system with full circuit-breaker protection
 Starter batteries 24v DC
 Domestic batteries 24v DC
 Emergency Batteries 24v DC
 Independent battery back-up for VHF radio
 2 x domestic service battery charger for 24v circuits
 2 x engine battery charger for 24v circuits
 1 x emergency battery charger
 1 x radio battery charger
 3 x 2kW immersion heaters for each calorifier
 AC sockets throughout the boat
 Class approved fire detection system with sensors in all cabins and monitoring beside main helm position
 PABX telephone exchange system with telephone hand sets

GALLERY



Jefferson Beach Yacht Sales
24400 Jefferson Avenue,
St. Clair Shores, MI 48080
Phone: 866-490-5297