



**Jefferson Beach Yacht Sales**  
24400 Jefferson Avenue,  
St. Clair Shores, MI 48080  
Phone: 866-490-5297

# Sunseeker 116 Yacht

Boat Type: Motor Yacht



## OVERVIEW

Welcome to the future of superyachts. The cutting-edge 116 is built upon the proven platform of its hugely popular predecessor, the 115 Sport Yacht, but takes sophistication to the next level with a spectacularly reimagined deck and superstructure, open-plan layout and stylish modern interior.

The 116 combines superb performance with Sunseeker's Bespoke service – meaning every element of the 116's design and layout, from guest cabin configuration to hot tub option, can now be individually tailored to the needs of the customer – we've succeeded in creating the ultimate luxury yacht for entertaining in style.

SPECIFICATIONS

Basic Information

Manufacturer:	Sunseeker	Boat Type:	Motor Yacht
Model:	116 Yacht	Hull Material:	
Hull Type:		Category:	Power

Dimensions & Weight

Length:	116.00 ft	Draft - max:	8 ft - 2.44 meter
LOA:	115 ft 6 in - 35.2 meter	Bridge Clearance:	-
Beam:	24 ft - 7.32 meter	Dry Weight:	308000 ft
Deadrise Aft:	-		

Tank Capacities

Fuel Tank:	3817 gallons - 2 tank(s)	Holding Tank:	335 gallons - 1 tank(s)
Fresh Water Tank:	1055 gallons - 1 tank(s)		

Accommodations

Total Cabins:	-	Crew Cabins:	-
Total Berths:	12	Crew Berths:	5
Total Sleeps:	-	Crew Sleeps:	-
Total Heads:	-	Crew Heads:	-
Captains Cabin:	No		

FEATURES

Deck Equipment, Anchor Deck and Wheelhouse Deck

- Side bulwark door on port and starboard sides
- 2 x anchor windlasses with hand control
- 2 x hawses with roller, chain stopper and devil’s claw
- 2 x anchors with galvanised chain
- 2 x mooring bollards and 4 x fairleads
- 2 x fairleads with integrated bollards at mid-ships
- Anchor and chain wash down
- Fresh water deck wash with outlets forward and aft
- Handrails with stainless steel stanchions
- Safety glass side windows and windscreen
- Direct access from the wheelhouse and side deck stairs
- Teak-laid side decks and wheelhouse deck area
- Non-slip anchor deck area
- Low-level lighting alongside decks 24v DC
- Sunpads on wheelhouse deck
- Seating area with table
- Two pairs of marine speakers on wheelhouse deck
- Remote control spotlight located on wheelhouse roof

Twin horns located on wheelhouse roof

### **Aft Cockpit and Bathing Platform and Stern Garage**

Seating area

Dining table

Bar with stools

Refrigerator

Ice maker

Teak stair treads to flybridge deck

Teak-laid cockpit floor

Teak-laid stair treads on port and starboard sides leading to bathing platform

Teak-laid, hydraulic rise/fall and tilt bathing platform (fixed on outboard sides)

Stainless steel framed sliding doors to main saloon

Side deck door and stairs leading to engine room

Overhead lighting

Two pairs of marine speakers connected to saloon AV system

2 x capstans

2 x stainless steel bollards and 4 x fairleads

2 x stern bollards on outboard fixed sides of bathing platform

Hydraulic retractable gangway

Power operated door leading to stern garage

Stern garage (including recovery system) with storage for optional tender and two jet skis

Bathing ladder

Hot/cold water hand-held swimming shower

Locker with dockside water and deck wash at the stern

Locker with electrical shore power connection at the stern

Television and telephone dockside connection at the stern

Wetbar and stools

### **Flybridge Deck**

Direct access from the wheelhouse and from the aft cockpit stairs

Stainless steel framed windscreen

GRP radar arch structure

Lighting on underside of radar arch

Low-level lighting

Three pairs marine speakers

Deckwash outlet

Seating areas

Dining table

Wetbar unit

Five fixed bar stools

Sink with hot and cold water

Fridge

Icemaker

Electric ceramic griddle

Storage cupboard

Stern safety rails

Safety rails around top of staircase

Stainless steel ensign staff and socket

Uplighters in wetbar

### **Flybridge Helm**

Individual, manually adjustable pilot and co-pilot seats

Steering position with wheel

GRP console with dashboard panels

Electronic controls for main engines

Analogue engine instrumentation

Bow thruster control

Depth and speed display

Rudder angle indicator

Autopilot repeater

Radar, chart plotter and GPS fed to 2 x PC repeater displays

Magnetic compass

VHF with DSC

### **Main Saloon**

Main Saloon

Aft sliding doors in stainless steel and safety glass

Sliding door curtains

Aft console units

Assorted seating

Armchairs

Fitted carpet

Coffee table

Side glazing with curtains

Side windows with blinds

Television (55") on rise and fall

Entertainment system with CD, DVD and Blu-ray

LED overhead lighting

Data point (RJ45)

Telephone point with Dect phone linked to PABX

Air conditioning

220v AC sockets

### **Dining Area**

Dining table (for 10 people)

10 x dining chairs

Side console cabinets

Chinaware, glassware and cutlery (12 settings)

Side windows with blinds

Data point (RJ45)

Telephone point

LED overhead lighting

Table Lamps

Air conditioning  
Fitted carpet  
Access on starboard side to main deck lobby  
Door to galley

### **Main Deck Starboard Side Lobby**

Access from dining area leading to day head, main deck stateroom and crew lobby  
Stairs leading up to wheelhouse  
Stairs leading down to lower deck guest accommodation  
Watertight side door (manual) leading to starboard side deck  
LED overhead lighting  
Side window with blind  
Double 220v AC socket  
Fitted carpet

### **Raised Wheelhouse**

Pilot seat with electric movement control  
Main engines electronic controls  
Analogue engine instrumentation  
Monitoring of boat systems via Tjssens Electro  
Marine Personal Assistance 'MPA'  
Trim tab control  
Bow thruster control  
Magnetic compass  
Radar, chart plotter and GPS fed to  
3 x PC displays  
Transas electronic charting system  
Autopilot  
VHF with DSC and MF radio  
Inmarsat C  
Navtex receiver  
AIS  
Depth and speed monitoring via central navigation display  
Rudder angle indicator  
Windscreen wipers and glass washing system controls  
Demisting outlets for windscreen  
Searchlight control  
Data points x 3 (RJ45)  
Telephone points x 3 with 1 phone linked to PABX  
3 x double 220v AC sockets  
LED overhead lighting  
Air conditioning  
CD/radio with two speakers  
Chart table with storage and chart light  
Sofa seating area  
Table beside seating area  
Stairs leading to main deck  
Stairs and framed sliding door leading to flybridge deck

## **Galley**

Side window with blind  
Safety flooring  
Stone worktops  
Twin bowl sink with tap  
Cabinets and top-box lockers  
Electric oven  
Microwave  
Full-height fridge  
Full-height freezer  
Icemaker  
Dishwasher  
Ceramic electric five-zone hob  
Extractor fan ducted externally  
Rubbish bin  
Data point (RJ45)  
Telephone point with 1 phone linked to PABX  
LED overhead lighting  
Lighting on underside of top-box lockers  
Air conditioning  
6 x double 220v AC sockets  
Doors to dining area and crew lobby

## **Main Deck Servery**

Safety flooring  
Stone worktops  
Cabinets  
LED overhead lighting  
Air conditioning  
2 x double 220v AC sockets  
Doors to dining area  
Undercounter wine cooler  
Freestanding coffee machine

## **Day Head**

Tecma toilet (220v)  
Washbasin and vanity top  
Mirror  
Taps  
Soap dispenser  
Toilet roll holder  
Towel ring  
Toilet brush and holder  
Halogen overhead lighting  
Extractor fan  
Stone floor  
Side window with blind

## **Main Deck Master Stateroom**

Main Deck Master Stateroom

Double berth with sprung mattress, pillows and bedspread

Bedside cabinets

Bedside lights

Television (55") on bulkhead

Entertainment system with DVD, CD and Blu-ray

Upholstered chairs

Full-height glazing and curtains

Dressing table

Low back chair for dressing table

Storage cabinets and drawers

Escape hatch

Fitted carpet

Table lamps

Data point (RJ45)

Telephone point with Dect phone linked to PABX

LED overhead lighting

5 x double 220v AC sockets

Air conditioning

Doors to walk-in wardrobe, toilet room and main deck lobby

## **Main Deck Master Walk-in Wardrobe**

Hanging space with rails

Drawers for storage

Safe deposit box

Mirror on back of entrance door

LED overhead lighting

Fitted carpet

14 Main Deck Master Toilet Room

Tecma toilet (220v)

Washbasin and vanity top

Stone floor

Side window with blind

Extractor fan

LED overhead lighting

Taps

Soap dispenser

Towel ring

Toilet roll holder

Toilet brush and holder

Door to en suite

Robe hook

## **Main Deck Master En Suite**

2 x washbasins and vanity top

Stone floor

Storage lockers

Mirrors  
Bath  
Shower cubicle with glass door  
Razor socket  
Extractor fan  
Air conditioning  
LED overhead lighting  
Taps  
Soap dispenser  
Toothbrush holder  
Towel rings x 2  
Robe hooks x 2  
Door to toilet room  
Laundry basket

### **Lower Deck Lobby**

Stairs leading from main deck  
Step lighting  
LED overhead lighting  
Fitted carpet  
Doors leading to guest cabins

### **Lower Deck Aft Port Stateroom**

Double berth with sprung mattress, pillows and bedspread  
Bedside cabinets  
Bedside lights  
Television (32")  
Entertainment system with DVD, CD and Blu-ray  
Fixed portlights with blind  
Dressing table  
Stool for dressing table  
Escape hatch  
Data point (RJ45)  
Telephone point with 1 phone linked to PABX  
LED overhead lighting  
4 x double 220v AC sockets  
Air conditioning  
Fitted carpet  
Doors to walk-in wardrobe, en suite and lobby

### **Lower Deck Aft Port Walk-in Wardrobe**

Hanging space with rails  
Storage  
Safe deposit box  
Mirror on back of entrance door  
Halogen overhead lighting



Fitted carpet

### **Lower Deck Aft Port En Suite**

Tecma toilet (220v)

Washbasin and vanity top

Stone floor

Storage lockers

Mirrors

Shower cubicle with glass door

Razor socket

Portlight with blind

Extractor fan

Halogen overhead lighting

Taps

Soap dispenser

Toothbrush holder

Towel rails x 2

Robe hooks x 2

Toilet roll holder

Toilet brush and holder

Door to guest cabin

### **Lower Deck Aft Starboard Stateroom**

Double berth with sprung mattress, pillows and bedspread

Bedside cabinets

Bedside lights

Television (32")

Entertainment system with DVD, CD and Blu-ray

Fixed portlights with blind

Dressing table

Stool for dressing table

Escape hatch

Data point (RJ45)

Telephone point with 1 phone linked to PABX

Halogen overhead lighting

4 x double AC sockets

Air conditioning

Fitted carpet

Doors to walk-in wardrobe, en suite and lobby

### **Lower Deck Aft Starboard**

Walk-in Wardrobe

Hanging space with rails

Storage

Safe deposit box

Mirror on back of entrance door

Halogen overhead lighting

Fitted carpet

### **Lower Deck Aft Starboard En Suite**

Tecma toilet (24v)  
Washbasin and vanity top  
Stone floor  
Storage lockers  
Mirrors  
Stone seat within shower  
Razor socket  
Portlight with blind  
Extractor fan  
Halogen overhead lighting  
Taps  
Soap dispenser  
Toothbrush holder  
Towel rails  
Robe hooks  
Toilet roll holder  
Toilet brush and holder  
Door to guest cabin

### **Lower Deck Forward Port Guest Cabin**

Two single berths with sprung mattresses, pillows and bedspreads  
Bedside cabinet  
Bedside lights  
Television (32")  
Entertainment system with DVD, CD and Blu-ray  
Fixed portlights with blind  
Wardrobe with hanging rail  
Safe deposit box  
Fitted carpet  
Escape hatch  
Data point (RJ45)  
Telephone point with 1 phone linked to PABX  
LED overhead lighting  
3 x double 220v AC sockets  
Air conditioning  
Doors to en suite and lobby

### **Lower Deck Forward Port En Suite**

Tecma toilet (24v)  
Washbasin and vanity top  
Stone floor  
Storage lockers  
Mirrors  
Shower cubicle with glass door  
Razor socket  
Portlight with blind  
Extractor fan

LED overhead lighting  
Taps  
Soap dispenser  
Toothbrush holder  
Towel rail  
Robe hook  
Toilet roll holder  
Toilet brush and holder  
Door to guest cabin

#### **Lower Deck Forward Starboard**

Guest Cabin  
Two single berths with sprung mattresses, pillows and bedspreads  
Bedside cabinet  
Bedside lights  
Television (32")  
Entertainment system with DVD, CD and Blu-ray  
Fixed portlights with blind  
Wardrobe with hanging rail  
Safe deposit box  
Fitted carpet  
Escape hatch  
Data point (RJ45)  
Telephone point with 1 phone linked to PABX  
LED overhead lighting  
3 x double AC sockets  
Air conditioning  
Doors to en suite and lobby

#### **Lower Deck Forward Starboard En suite**

Tecma toilet (220v)  
Washbasin and vanity top  
Stone floor  
Storage lockers  
Mirrors  
Shower cubicle with glass door  
Razor socket  
Portlight with blind  
Extractor fan  
LED overhead lighting  
Taps  
Soap dispenser  
Toothbrush holder  
Towel rails  
Robe hook  
Toilet roll holder  
Toilet brush and holder  
Door to guest cabin

## **Crew Lobby**

Doors at top of stairs to main deck lobby and galley  
Staircase leading to lower deck crew cabins and crew mess  
Safety flooring  
LED overhead lighting  
Lower deck doors leading to crew cabins

## **Crew Mess**

Safety flooring  
Stone worktop  
Cabinets and top-box lockers  
Fixed portlight with blind  
Crew chinaware, glassware and cutlery (6 settings) with stowage  
Data point (RJ45)  
Telephone point with 1 phone linked to PABX  
4 x double 220v AC sockets  
LED overhead lighting  
Air conditioning  
Sofa seating area  
Folding leaf dining table  
Television (32")  
DVD/CD player with two speakers  
VHF handset  
Depth and speed display

## **Aft Port Crew Cabin**

Twin-bunk berths with foam mattresses, pillows and bedspread  
Wardrobe with hanging rail  
Fixed portlight with curtains  
LED overhead lighting  
Data point (RJ45)  
Telephone point  
220v AC socket  
Air conditioning  
CD/radio with two speakers  
Escape hatch  
Fitted carpet  
Doors to en suite and lobby

## **Aft Port Crew En Suite**

Tecma toilet (220v)  
Washbasin  
Lockers  
Shower  
Halogen overhead lighting  
Razor socket  
Extractor fan

Tap  
Toothbrush holder  
Toilet roll holder  
Folding door to cabin with frosting

#### **Aft Starboard Crew Cabin**

Twin-bunk berths with foam mattresses, pillows and bedspread  
Wardrobe with hanging rail  
Fixed portlight with curtains  
LED overhead lighting  
Data point (RJ45)  
Telephone point  
AC socket  
Air conditioning  
CD/radio with two speakers  
Escape hatch  
Fitted carpet  
Doors to en suite and lobby

#### **Aft Starboard Crew En Suite**

Tecma toilet (220v)  
Washbasin  
Lockers  
Shower  
LED overhead lighting  
Razor socket  
Extractor fan  
Tap  
Toothbrush holder  
Toilet roll holder  
Folding door to cabin with frosting

#### **Forward Starboard Captain's Cabin**

Large single berth with foam mattress, pillows and bedspread  
Bedside cabinet  
Bedside lights  
Television (22")  
DVD/CD with two speakers  
Fixed portlight with curtains  
Wardrobe with hanging rail  
Safe deposit box  
Fitted carpet  
Escape hatch  
Data point (RJ45)  
Telephone point  
LED overhead lighting  
2 x double AC sockets  
Air conditioning

Doors to en suite and lobby

### **Forward Starboard Captain's En Suite**

Tecma toilet (220v)

Washbasin and vanity top

Storage lockers

Mirrors

Shower

Razor socket

Extractor fan

LED overhead lighting

Tap

Soap dispenser

Toothbrush holder

Toilet roll holder

Toilet brush and holder

Folding door to cabin with frosting

### **Stern Laundry**

Washing machine

Condensing tumble dryer

Overhead lighting

2 x double 220v AC socket

Telephone point

Non-slip safety flooring

### **Covers**

Flybridge instrument cover

Flybridge helmseat covers

Wheelhouse helmseat cover

Foredeck sunpad cover

Aft cockpit fixed seating cover

Aft cockpit table cover

Flybridge fixed seating covers

Flybridge bar stool covers

Flybridge table covers

Interior dining table cover

Flybridge sundeck cover

Foredeck table cover

### **Miscellaneous**

1 x set Egyptian cotton sheets consisting of, mattress protector, 1 x fitted bottom sheet, 1 x flat top sheet, 1 x Oxford style & 1 x Housewife pillowcase per person

1 x set of towels per person

10 x large fenders with ties

3 x 20m black docking lines

2 x 15m black docking lines

1 x 10m black docking line

Spares kit  
Sunseeker boat mat  
Mosquito screens for all openable portlights

### **Engine Compartment and Ancillaries**

Bow thruster hydraulic control unit 63kW.  
Gearbox driven pumps 80cc (SAE 'C').  
(Note: When optional stern thruster is specified, system is designed for simultaneous use, producing 80% performance from each thruster when operated at the same time.)  
Power steering – hydraulic control unit with cooling pump – gearbox driven pumps (SAE 'C')  
Emergency steering – hydraulic  
Garage door and trim tabs hydraulic control unit – 24v  
Lifting platform hydraulic control unit – 400v AC  
Passerelle hydraulic control unit – 400v AC  
1 x watermaker (180 litres/47 US gals per hour)  
Emergency steering  
Oil exchange system  
Air intakes fitted with mist eliminator system & emergency shutdown flaps (automatically operated)  
Air extraction fans (AC) fitted with butterfly shutdown dampers  
Exhaust gas temperature sensor  
Inspection lamp  
Basic toolbox  
Fluorescent lights (AC)  
Emergency lighting (DC)  
Simrad RS90 hand set with intercom speaker  
Fire alarm systems  
Fire hydrant system  
Engine room fire extinguishing system (FM200)  
Tender garage fire extinguishing system (FM200)  
AC/DC electrical outlets (double AC & 1 x 24v outlet)  
Power management system panel  
Maglite torch  
Manual submersible bilge pumps  
1 x AC fire pump  
Portable CO2 fire extinguisher

### **Underwater Gear**

Bow thruster – hydraulic engine driven (63kW)  
Seawater strainers – nickel plated bronze  
Full cathodic bonding system to zinc anodes  
Hydraulic trim tabs – stainless steel  
Propeller shafts – Marinemet 25 – Duplex F51 – high grade stainless steel  
High performance rudders – AB2 nickel aluminium bronze  
P-brackets – AB2 nickel aluminium bronze c/w water lubricated bearing  
Self-aligning shaft seal including spare seal  
5-blade NAB bronze propellers

### **Fuel System**

Fuel is stored in two dedicated tanks (1 x daily service tank and 1 x (optional) main tank) integral with hull structure complete with permanently open vent lines (note: all tanks should not be filled above 95%)

Main engines and generators draw and return from fittings on the day tank located within the engine room

Bunkering to both tanks through individual filling stations, port and starboard each fitted with a 2" fitting for filling and venting

Fuel level indication – displayed at main helm and flybridge

Accurate fuel monitoring via tank volume computer with digital bar-graph display at main helm and analogue indication at flybridge

Warning lights indication at 75% & 95% at fuel filling station

Each tank fitted with two capacitance level probes c/w NMEA 2000 communication bus

Accurate measurement for fuel levels can be taken when underway at speeds up to 12 knots before running trim will adversely affect the accuracy of the readings

Fuel piping (engine room) – press fit type stainless steel & zinc-plated steel with Parker high temperature rubber hose (single wire reinforcement) for short lengths

Fuel piping (all areas outside the engine room)

ISO 7840 fuel hose except fuel transfer line

Emergency fuel shut-off valves to main engines and generators – located on tank hatch. Valves remotely operated and actuated from the fire control locker with local manual override

## **Systems**

Hydraulic power steering

Electric toilet system with integral macerator  
(240v) with two-switch control

Toilets discharging overboard or to black water tank

Black water tank discharging to dockside or overboard

Integral fresh water tank with electric sending unit

Integral GRP fuel tank with electric sending unit

Water pressure system (400v 3 phase 50Hz)

Hot water tank x 2 at 200 litres each (with 3 x 2kW immersion heaters)

Hot water circulating pump 220v AC

Washbasins, showers and air conditioning fan coils to drain to grey water tank

Grey water tank discharging overboard or to black water tank

Chilled water air conditioning system (reverse cycle) 220v AC

Bilge pumping system (400v 3 phase 50Hz)

Manual/automatic fire extinguishing system combined with engines, generators and fans shutdown

Auxiliary hydraulics for trim tabs and platform (24v)

## **Electrical System**

Vessels for all markets will be specified with 230/400 Volts 50Hz AC 3 phase power supplies and equipment.

Vessels entering the United States markets will be supplied with additional equipment to provide the necessary 120v 60Hz single phase supplies for power receptacles and AV systems

2 x 55kW 400/230v 3 phase 50Hz generators with underwater silent exhaust and sound shield

Tijssen Marine Personal Assistance touch screen based control system which facilitates control and monitoring of all the main ship systems including but not limited to, tank levels, alarms and monitoring, pump control, bilge status and all electrical load management

75 kVA shore power converter

Two dockside AC 100A connection

One power assisted cable retrieval system and one loose cable



Semi-automatic AC power distribution

24v DC electrical system with full circuitbreaker protection

Starter batteries 24v circuit

Domestic batteries 24v circuit

Independent battery back-up for VHF radio

Automatic battery charge distribution

Remote battery switches controlled from aft cockpit locker

2 x domestic service battery charger for 24v circuits

2 x engine battery charger for 24v circuits

1 x emergency battery charger

1 x radio battery charger

3 x 2kW immersion heaters for calorifier

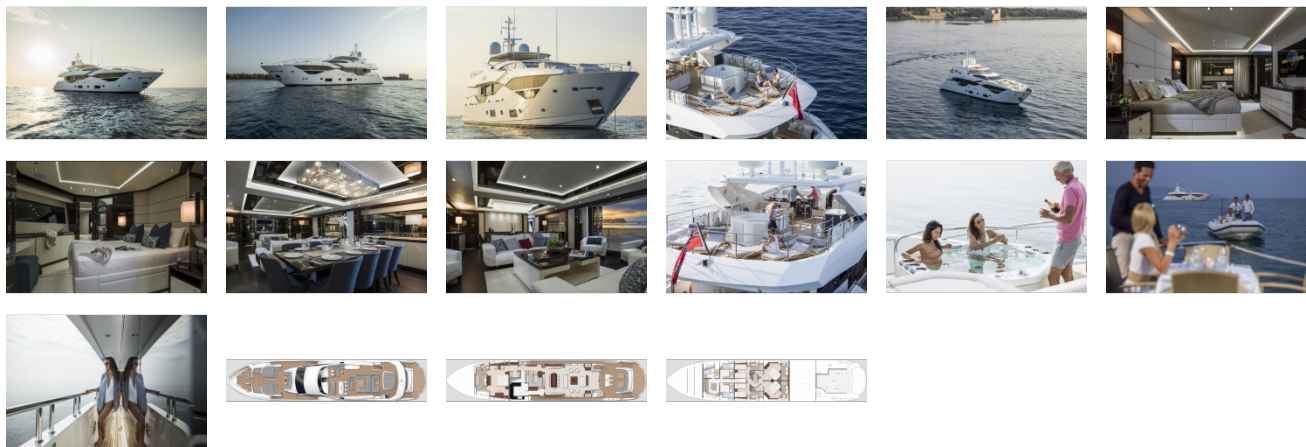
AC sockets throughout the boat

24v hand light and cable

Class approved fire detection system with sensors in all cabins and monitoring beside main helm position

PABX telephone exchange system with telephone

GALLERY



**Jefferson Beach Yacht Sales**  
24400 Jefferson Avenue,  
St. Clair Shores, MI 48080  
Phone: 866-490-5297