



Jefferson Beach Yacht Sales
24400 Jefferson Avenue,
St. Clair Shores, MI 48080
Phone: 866-490-5297

Sunseeker 86 Yacht

Boat Type: Motor Yacht



OVERVIEW

A seductive combination of style and exclusivity, the 86 Yacht delivers on all fronts. From bow to stern, every detail has been crafted to perfection. Inside, the main saloon is a large welcoming space; full of natural light, hand-finished furnishings and state-of-the-art technology. The outstanding level of design and craftsmanship continues below deck, where both the owner's stateroom and guest cabins offer privacy and extravagance in equal measure.

Yet, there's more to this yacht than sublime style. An incredible 1500nm range at 10kts defies any industry norm. With a top speed of approximately 30 knots, guests can experience an exhilarating open-air ride from the flybridge or relax and enjoy the stunning scenery from seating areas both fore and aft. A future great. An instant classic.

SPECIFICATIONS

Basic Information

Manufacturer:	Sunseeker	Boat Type:	Motor Yacht
Model:	86 Yacht	Hull Material:	
Hull Type:		Category:	Power

Dimensions & Weight

Length:	86.00 ft	Draft - max:	6 ft 5 in - 1.96 meter
LOA:	86 ft 3 in - 26.29 meter	Bridge Clearance:	-
Beam:	21 ft 3 in - 6.48 meter	Dry Weight:	147710 ft
Deadrise Aft:	-		

Tank Capacities

Fuel Tank:	2907 gallons - 1 tank(s)	Holding Tank:	115 gallons - 1 tank(s)
Fresh Water Tank:	370 gallons - 1 tank(s)		

Accommodations

Total Cabins:	-	Crew Cabins:	-
Total Berths:	8	Crew Berths:	4
Total Sleeps:	-	Crew Sleeps:	-
Total Heads:	-	Crew Heads:	-
Captains Cabin:	No		

FEATURES

Construction

- Hand-laid GRP
- Gel coat including stripes
- Vinylester skin coat with powderbound mat
- Stitched multi-axial reinforced single-skin bottom
- Balsa-cored hull topsides
- PVC foam-cored deck and superstructure
- Hull stiffened with longitudinal stringers supported by transverse bulkheads and floors

Flybridge Deck

- Self-draining cockpit
- Acrylic deflecting spray screen
- Seating areas
- Storage lockers under seating
- Teak dining tables (natural finish)
- Upholstered sunbathing area forward
- Stainless steel aft safety rails
- Glass holders
- Wetbar unit
- Sink in wetbar unit with hot and cold water supply
- Icemaker in wetbar unit
- Fridge in wetbar unit
- Ceramic electric griddle in wetbar unit
- Fire extinguisher
- Deckwash outlet
- Low-level flybridge lighting 24v

Radar arch structure
Radar chair with navigation light assembly
Overhead lighting on underside of radar arch 24v
Two pairs marine speakers
Flagstaff and socket

Flybridge Helm

Two helm seats
Hydraulic steering
Duplicate engine controls
Engine instrumentation
Autopilot repeater
Radar/chart plotter with GPS repeater
Depth and speed multi display
VHF second station
Remote spotlight control
Magnetic compass
Steering indicator
Trim tab control
Horn control
Control head for flybridge CD/radio
Waterproof plug and socket 12v

Deck

Fittings all in 316 stainless steel and chromed bronze
Pair stainless steel bow cleats and fairleads
Stainless steel spring cleats with chafing bars
Pair stern cleats and fairleads
Stainless steel pulpit and cockpit rails
Stainless steel fendering with rubber insert
Stainless steel bow roller with anchor stop and devil's claw
Single electric windlass (Lewmar V8) 24v, starboard side, foredeck control only
Anchor 80kg (galvanised)
Anchor chain 100 metres/328 feet (12mm diameter, galvanised)
Stainless steel bow plate
Deckwash with outlets forward and aft
Chain locker
Curved direct glazed safety glass windscreen
Pantograph windscreen wipers and washers
Fresh water filler
Fuel fillers port and starboard
IMCO navigation lights
Remote controlled spotlight at bow
Ensign staff and socket
Bow seating
Bow sunbathing pad
Glass holders
Storage lockers port and starboard

Aft Cockpit

Teak-laid cockpit floor
Self-draining
Stairs to flybridge with teak treads
Aft fixed bench seating
Teak table (natural finish)
Stern safety gates
Engine room access hatch
2 x stern capstan winches (Lewmar C4)
24v and fairleads
Overhead cockpit lights 24v
Low-level courtesy lights 24v
Pair marine speakers connected to saloon
AV system with Bose PMCIll remote
Wetbar unit
Fire extinguisher in wetbar locker
Coolbox in wetbar unit
Sink with hot and cold water supply

Bathing Platform

Teak-laid hydraulic lifting bathing platform
Stairs to aft cockpit with teak treads
Foldout stainless steel swimming ladder
Hot and cold hand-held swimming shower
Fresh water marina connection
Television and telephone marina connection
Access to crew quarters
Dockside AC connection 1 x 100 amp
Glendinning Cablemaster
Hydraulic telescopic gangway

Saloon and Dining

Stainless steel framed sliding door to aft cockpit
Sliding door curtains with tie backs
Sofa seating with storage in base
Two low-level stools
Coffee table
Scatter cushions
Flatscreen television 40"
DVD/CD/radio surround-sound system with five speakers and sub-woofer
Air conditioning
Side windows with blinds
Drinks cabinet with glassware stowage for eight
8 x Champagne flutes, 8 x whisky tumblers, 1 x decanter
Overhead lighting LED 24v
Double AC sockets
Table lamps
Dining table

8 x freestanding dining chairs
Storage cupboards port and starboard
Fitted carpet

Galley

Large fridge/freezer
4-ring ceramic hob AC
Hob extractor AC
Convection oven with microwave function AC Full-size dishwasher AC
Stainless steel sink
Hot and cold water
Rubbish bin Crockery set (8 place settings)
Cutlery set (8 place settings)
Storage cupboards and drawers
Bar unit with stools
Overhead lighting LED 24v
Double AC sockets
Air conditioning
Fire blanket
Fire extinguisher
First aid kit

Main Helm Console and Observation Area

2 x upholstered helm seats with electric operation
Hydraulic power steering
Radar/chart plotter with GPS
Autopilot
Depth and speed displays
VHF radio dual station
Magnetic compass
Horn control
Switch panels
Remote spotlight control
Trim tab controls
12v socket
Engine instrumentation
Management monitoring for fresh water, black water and fuel
Main control and monitoring panel (AC/DC) with generators control
Windscreen wiper and washer controls
Glass holder
Screen demister
Fire extinguisher
Manual side opening door to starboard side deck
Sofa seat on port side with table
Double AC socket for seating group
Double AC socket at console
Staircase forward leading to forward VIP cabin
Fitted carpet

Forward VIP Stateroom

Double berth
Foam mattress for berth
Storage beneath berth
Drawers in berth end
Bedside lights
Dressing table
Low back chair for dressing table
Air conditioning
Flatscreen television 32" on bulkhead
Blu-ray/DVD/CD/radio surround-system with two speakers and sub-woofer
Overhead lighting LED 24v
Large windows with blind on each side
Double AC sockets
Fitted carpet
Doors to en suite and walk-in wardrobe

Forward VIP Walk-in Wardrobe

Hanging rails
Shelves and drawers
Mirror
Overhead lighting LED 24v
AC socket
Fitted carpet
Door to stateroom

Forward VIP En Suite

Electric toilet 24v
Vanity top and flooring
Ceramic washbasin
Taps and accessories (toothbrush and glass holder, soap dispenser, towel rails and towels)
Separate shower compartment
Air conditioning outlet
Extractor fan
Vanity mirror
Shelved cupboard
Overhead lighting LED 24v
Opening porthole with mosquito screen and Venetian blind
Shaver socket 240/110v
Door to stateroom

Master Stateroom

Double berth
Foam mattress for berth
Storage and drawers beneath berth
Bedside storage cabinets
Bedside lights 24v

Dressing table
Low back chair for dressing table
Port side seats with table
Air conditioning
Overhead lighting LED 24v
Large windows with blind on each side
Double AC sockets
Flatscreen television 40" on bulkhead
Blu-ray/DVD/CD/radio surround-system with two speakers and sub-woofer
Fitted carpet
Doors to en suite and walk-in wardrobe

Master Walk-in Wardrobe

Hanging rails
Shelves and drawers
Mirror
Overhead lighting LED 24v
AC socket
Fitted carpet
Door to stateroom

Master En Suite

Electric toilet 24v
Vanity top and flooring
Ceramic washbasin
Taps and accessories (toothbrush and glass holder, soap dispenser, towel rails and towels)
Separate shower compartment
Extractor fan
Air conditioning outlet
Mirror
Overhead lighting LED 24v
Opening porthole with mosquito screen and Venetian blind
Shaver socket 240/110v
Door to stateroom

Starboard Guest Cabin

Two single berths
Foam mattresses for berths
Under-berth stowage
2 x reading lights 24v
Hanging wardrobe
Air conditioning
Overhead lighting LED 24v
Porthole with blind
Double AC socket
Flatscreen television 22"
Blu-ray/DVD/CD/radio player with two speakers
Fitted carpet

Doors to en suite and lobby

Starboard Guest En Suite/Day Head

Electric toilet 24v

Vanity top and flooring

Washbasin

Taps and accessories (toothbrush and glass holder, soap dispenser, towel rails and towels)

Separate shower compartment

Acrylic folding shower door

Extractor fan

Air conditioning outlet

Vanity unit

Mirror

Shelved cupboard

Overhead lighting LED 24v

Opening porthole with mosquito screen and Venetian blind

Shaver socket 240/110v

Doors to guest cabin and lobby

Port Guest Cabin

Two single berths

Foam mattresses for berths

Under-berth stowage

2 x reading lights 24v

Hanging wardrobe

Air conditioning

Overhead lighting LED 24v

Porthole with blind

Double AC socket

Flatscreen television 22"

Blu-ray/DVD/CD/radio player with two speakers

Fitted carpet

Doors to en suite and lobby

Port Guest En Suite

Electric toilet 24v

Vanity top and flooring

Washbasin

Taps and accessories (toothbrush and glass holder, soap dispenser, towel rails and towels)

Separate shower compartment

Acrylic folding shower door

Extractor fan

Air conditioning outlet

Vanity unit

Shelved cupboard

Overhead lighting LED 24v

Opening porthole with mosquito screen and Venetian blind

Shaver socket 240/110v

Door to guest cabin

Stern Crew Lobby

Access door from stern

Storage

Washer/dryer

Air conditioning

AC socket

Overhead lighting LED 24v

Doors to crew cabins and crew toilet/shower

Port Aft Crew Cabin

Single berth

Foam mattresses for berths

Reading lights 24v

Air conditioning

Overhead lighting LED 24v

Double AC socket

Fitted carpet

Opening porthole with mosquito screen and curtains

Door to crew lobby

Port Forward Crew Cabin*

Single berth

Foam mattresses for berths

Reading lights 24v

Air conditioning

Overhead lighting LED 24v

Double AC socket

Fitted carpet

Opening porthole with mosquito screen and curtains

Door to crew lobby

*subject to optional tender garage option

Crew Toilet/Shower

Tecma toilet 24v

Washbasin

Shower cubicle with bi-fold shower door

Mirror

Vanity unit

Overhead lighting LED 24v

Shaver socket 240/110v

Doors to crew lobby and engine room

Engine Compartment and Ancillaries

Soundproofing throughout

Fuel filters/water separators to engines

Fuel filters/water separators to generators
Manual/automatic fire extinguishing system combined with engines, generators and fans shutdown
Automatic bilge and flood pumps with high-level alarms
Air extraction fans (230v) fitted with butterfly shutdown dampers
Generator exhaust silencers and water separators
Engine exhaust dry risers and water injection
Strainers to all raw water inlets
Exhaust gas temperature sensor
Power steering – hydraulic control steering (engine driven)
Lifting platform and trim tabs hydraulic control unit
Air intakes fitted with emergency shutdown flaps (automatically operated)

Electrical System

Euro spec only: 2 x 28kW @ 50Hz slow speed Kohler generators with underwater silent exhaust and sound box
US spec only: 2 x 28kW @ 60Hz slow speed Kohler generators with underwater silent exhaust and sound box
Dockside AC connection 1 x 100 amp
Glendinning Cablemaster
Isolation transformer
Semi-automatic AC power management system
24v and 12v DC electrical system with full circuit breaker protection
8 x engine batteries 24v circuit
6 x domestic batteries 24v circuit
Alternator split-charging system
Remote battery switches controlled from aft cockpit locker
1 x 100 amp battery charger for 24v circuits
Immersion heater for calorifier
AC sockets throughout the boat
24v hand light and cable
Fire detection system with sensors in all cabins and monitoring beside main helm position

Underwater Gear

NAB 5-blade propellers
Bronze (MB2) P-brackets
75mm Temet 25 propeller shafts
Self-aligning shaft seal with spare seal
High-performance bronze rudders
Valves to all underwater skin fittings
Full cathodic bonding system to zinc anodes
Stainless steel trim tabs
Hydraulic bow thruster
Hydraulic stern thruster
Antifouling

Systems

Hydraulic power steering
Electric toilet system with two-switch control
Toilets discharging overboard or to black water tank
Black water tank discharging to dockside or overboard through discharge/macerator pump (24v)

Aluminium fresh water tank with electric sending unit
Integral GRP fuel tank with electric sending unit
Water pressure system (230v)
Hot water tank, 200 litre (with 2 x 2kW immersion heaters)
Hot water circulating pump (230v)
Washbasins, showers and air conditioning fan coils to drain to grey water tank
Grey water tank discharging overboard through discharge pump (24v)
Chilled water air conditioning system (reverse cycle), (230v)
Bilge pumping system (230v)
Manual/automatic fire extinguishing system combined with engines, generators and fans shutdown
Auxiliary hydraulics for trim tabs and platform (24v)

Miscellaneous

Retractable boat hook
6 x docking lines (6 x 15 metre, 20mm diameter, black)
1 x tender line (1 x 10 metre, 10mm diameter, black)
8 x fenders (F7, 15" x 41", white)
8 x fender ties (8 x 3.5 metre, 10mm diameter, black)
Flagstaff with line
Pennant mast with pennant flag
Mosquito screens for openable portlights
Vacuum cleaner
Spare bulbs
Small toolkit
8 x towel sets
First aid kit
Fire blanket
Leather cleaning kit
Lead lamp
Deckwash fitting and hose reel
Portable fire extinguishers

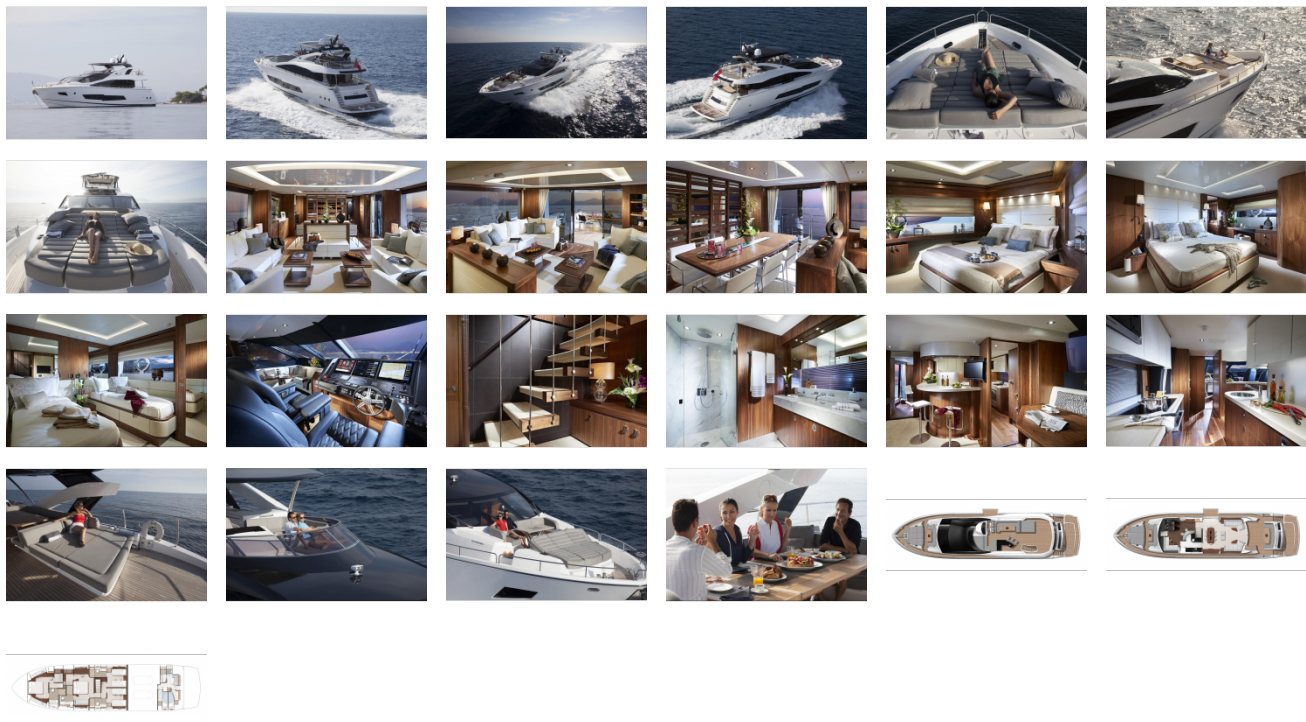
Covers

Windscreen sun screen
Flybridge instrument cover
Aft cockpit camper cover with windows

Optional Extras

Sliding doors and bulwark balcony (starboard side)
Upper deck day head
Tender garage arrangement
Flybridge crane

GALLERY



Jefferson Beach Yacht Sales
24400 Jefferson Avenue,
St. Clair Shores, MI 48080
Phone: 866-490-5297