



Jefferson Beach Yacht Sales
24400 Jefferson Avenue,
St. Clair Shores, MI 48080
Phone: 866-490-5297

Sunseeker Predator 57

Boat Type: Motor Yacht



OVERVIEW

Stunningly crafted to perfectly balance style with practicality. An electric lowering door between the saloon area and the cockpit, allows the craft to adapt for different climates and create a seamless entertaining space with uninterrupted views. The uniquely open plan and flexible design of the Predator 57 continues with a fully opening hardtop roof, also a moulded aft cockpit with a large L-shaped seating arrangement and wet bar.

Fine and thoughtful design naturally continues to the exterior, with sleek yet oversized mullion-free hull windows to provide light-filled interiors. And of course performance matches the Predator 57 style. With speeds of up to 40 knots, it cuts a sharp, impressive figure on the open water. Truly a yacht designed for perfect cruising.

SPECIFICATIONS

Basic Information

Manufacturer:	Sunseeker	Boat Type:	Motor Yacht
Model:	Predator 57	Hull Material:	
Hull Type:		Category:	Power

Dimensions & Weight

Length:	57.00 ft	Draft - max:	4 ft 3 in - 1.3 meter
LOA:	59 ft 10 in - 18.24 meter	Bridge Clearance:	-
Beam:	15 ft 5 in - 4.7 meter	Dry Weight:	61509 ft
Deadrise Aft:	-		

Tank Capacities

Fuel Tank:	581 gallons - 1 tank(s)	Holding Tank:	-
Fresh Water Tank:	158 gallons - 1 tank(s)		

Accommodations

Total Cabins:	-	Crew Cabins:	-
Total Berths:	6	Crew Berths:	1
Total Sleeps:	-	Crew Sleeps:	-
Total Heads:	-	Crew Heads:	-
Captains Cabin:	No		

FEATURES

Construction

- Hand-laid GRP
- Gel coat including stripes
- Vynlester skin coat with powderbound mat
- Stitched multi-axial reinforced single-skin bottom
- Balsa-cored hull topsides
- PVC foam-cored deck and superstructure
- Hull stiffened with longitudinal stringers supported by transverse bulkheads and floors

Deck

- Fittings all in stainless steel
- 8 x deck cleats in stainless steel
- Delta anchor and 60 metre chain (galvanised)
- Electric winch and capstan 24v with deck and helm controls 24v
- Stemhead roller and anchor stop
- Self-draining chain locker-fender stowage
- Pulpit and cockpit rails in stainless steel
- Stainless steel fendering with rubber insert
- IMCO navigation lights

2 x pantograph wipers 24v, windscreen washers
Ensign staff and socket
6 x fenders and 4 warps
Remote spotlight 24v
Curved safety glass windscreen

Bathing Platform

Hydraulic fall and rise system
Fresh water marina connection
Dockside AC shore power connection
Hot and cold swimming shower
Teak-laid bathing platform
Foldaway stainless steel swimming ladder

Aft Cockpit

Self-draining
Large sunbed
Garage to house owners tender
Wetbar with refrigerator
Sink with hot and cold water
Upholstered seating with stowage underneath
Teak cockpit table on stainless steel leg
Stern safety gate
Engine room access hatch
Overhead lighting 24v
Low-level lighting 24v
Teak-laid cockpit and steps
Cockpit speakers
Boat hook
Hand-held fire extinguisher

Deck Saloon

Seating group with storage below
Dining table
Radio/CD with Bluetooth
Overhead lighting 24v
Double AC socket x 2
Stainless steel sliding cockpit door to aft cockpit
Teak-laid cockpit
Forward-facing co-pilot bench seat
Scatter cushions

Main Helm Console

Upholstered helm seats
Console with piano black type fascia
Hydraulic steering
Sports steering wheel
Radar/Plotter

Autopilot
VHF radio
Analogue engine instrumentation
Electric speedlog
Depth sounder
Rudder indicator
Compass
Horn
Windscreen wipers and washers
Trim tab controls
12v socket
Glass holders
Hand-held fire extinguisher
Double AC socket

Galley

Sink and drainer
Hot and cold water supply
Electric refrigerator/freezer
Ceramic 4-ring touch control hob
Hob extractor fan
Microwave oven
Rubbish bin
6 place crockery set
6 place cutlery set
Cupboard and drawer storage
Double AC socket x 2
Overhead lighting 24v
Opening porthole with mosquito screen
Hand-held fire extinguisher
First aid kit

Lower Saloon

Seating group with storage below
Dining table
22" television
Radio/CD/DVD with Bluetooth and speakers
Overhead lighting 24v
Double AC socket
Fitted carpet
Scatter cushions

Master Aft Cabin

Double berth with storage and drawer beneath
Outboard cabinets
Bedside cupboards
Bedside wall lamps
Settee

Hanging wardrobe with mirrored door
Overhead lighting 24v
Panoramic windows with opening portholes
Double AC socket x 2
32" television
Fitted carpet

Master En Suite Shower Room and Toilet

Electric toilet
Avonite counter top
Shower taps and accessories
Washbasin
Hot and cold water
Separate shower compartment
Extractor fan
Razor socket 240/110v
Mirrored cupboard
Towel rail
Bath and hand towels
Overhead lighting 24v
Opening porthole with Venetian blind
Door to stateroom

Starboard Guest Cabin

Two single Pullman style berths
Reading lights 24v
Under-berth stowage
Hanging wardrobe with mirrored door
Overhead lighting 24v
Opening porthole with mosquito screen and curtain
Double AC socket
22" television
Fitted carpet

Forward VIP Guest Cabin

Double berth with storage and drawers beneath
Two reading lights 24v
Outboard Lockers
Hanging wardrobe with mirrored door
Overhead lighting 24v
Opening portholes and curtains
Deck hatch
Double AC socket
22" television
Fitted carpet

Forward VIP Shower and Toilet/Day Head

Electric toilet

Avonite counter top
Shower taps and accessories
Washbasin
Hot and cold water
Separate shower compartment
Extractor fan
Razor socket 240/110v
Mirrored cupboard
Towel rail
Bath and hand towels
Overhead lighting 24v
Opening porthole with Venetian blind

Crew Cabin

Single berth
Reading light 24v
Stowage locker
Sink with hot and cold water
Toilet 24v
Overhead lighting 24v
Opening porthole with mosquito screen and curtain
Double AC socket
Fitted carpet

Engine Compartment and Ancillaries

Soundproofing throughout
Aluminium fuel tanks with electric sender units
Fuel filters/water separators to engines
Fuel filters/water separators to generators
Automatic bilge and flood pumps with high-level alarms
Generator exhaust silencers and water separators
Engine exhaust dry risers and water injection
Strainers to all raw water inlets
Power steering – hydraulic control steering
Garage door, lifting platform and trim tabs hydraulic control unit
Air intakes fitted with emergency shutdown flaps (automatically operated)
Air distribution fans (DC)
Air extraction fans (DC) fitted with butterfly shutdown dampers
Exhaust gas temperature sensor
Engine room fire extinguishing system (FM200)

Electrical System

Generator with underwater silent exhaust
AC dockside connection
Main DC and AC electrical circuits protected by re-settable circuit breakers
Systems monitoring panel
Galvanic isolator
4 x batteries for engine starting 24v circuit

4 x batteries for domestic power 24v circuit
Battery coupling system
Battery switches controlled from locker in cockpit
Alternator split-charging system
Battery charger for 24v circuits
Battery charger for 12v circuits
Water heater
Electrical AC sockets throughout the boat
Electric bow thruster

Underwater Gear

Bow thruster – electric 24v
Seawater strainers – nickel-plated bronze
Full cathodic bonding system to zinc anodes
Hydraulic trim tabs – stainless steel
Propeller shafts – Temet 25
High performance rudders – AB2
P-brackets – NAB nickel aluminium bronze c/w water lubricated bearing
Self-aligning shaft seal including spare seal
5-blade AB2 bronze propellers

Systems

Hydraulic power steering
Electric toilet system with integral macerator (24v)
Toilets discharging overboard or to black water tank
Black water tank discharging to dockside or overboard
Polyethylene fresh water tank with electric sending unit
Aluminium fuel tank with electric sending unit
Water pressure system (24v)
Hot water tank with immersion heater (AC)
Washbasins and showers drain to sump box
Sump box automatically discharging overboard
Bilge pumping system (24v)
Manual/automatic fire extinguishing system combined with engines, generators and fans shutdown
Auxiliary hydraulics for garage door and trim tabs (24v)

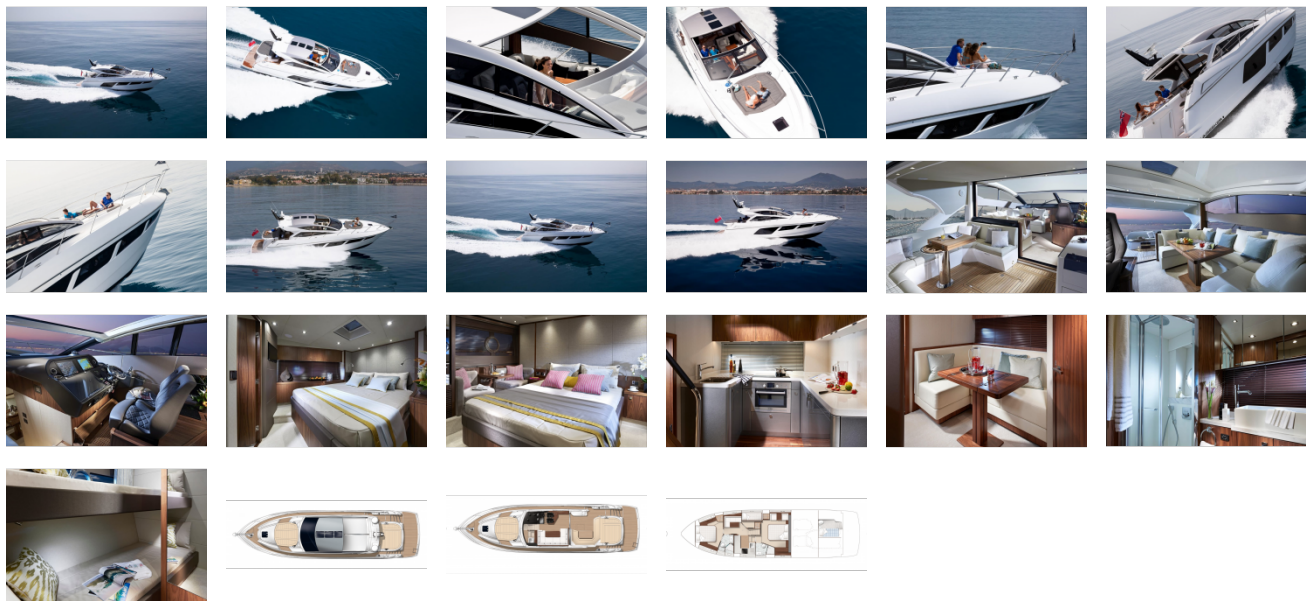
Miscellaneous

Toolkit
Boat hook
4 x mooring ropes
6 x fenders
2 x towel sets

Optional Extras

Air conditioning
Hydraulic gangway
Stern thruster

GALLERY



Jefferson Beach Yacht Sales
24400 Jefferson Avenue,
St. Clair Shores, MI 48080
Phone: 866-490-5297