



Jefferson Beach Yacht Sales
24400 Jefferson Avenue,
St. Clair Shores, MI 48080
Phone: 866-490-5297

Sunseeker Manhattan 52

Boat Type: Motor Yacht



OVERVIEW

Space, light and sociability define the new Manhattan 52. Its innovative design is all about spacious living that sets new benchmarks for the smaller flybridge motoryacht. Throughout the new Manhattan 52, we've maximised its living and entertainment space, incorporating expanses of beautiful curved glass to emphasise its sleek lines and bring in even more light. Throughout its main deck you'll discover exciting, sociable spaces that flow from the astonishingly roomy bow seating and sunbathing area to its open cockpit space and upper aft galley, giving you plenty of ways to relax, entertain and enjoy the good life.

The Manhattan 52 has been announced as the winner of 2017 Motor Boat Awards 'Flybridges up to 55ft' category.

SPECIFICATIONS

Basic Information

Manufacturer:	Sunseeker	Boat Type:	Motor Yacht
Model:	Manhattan 52	Hull Material:	
Hull Type:		Category:	Power

Dimensions & Weight

Length:	52.00 ft	Draft - max:	4 ft 2 in - 1.27 meter
LOA:	52 ft 6 in - 16 meter	Bridge Clearance:	-
Beam:	16 ft - 4.88 meter	Dry Weight:	59524 ft
Deadrise Aft:	-		

Tank Capacities

Fuel Tank:	580 gallons - 1 tank(s)	Holding Tank:	36 gallons - 1 tank(s)
Fresh Water Tank:	158 gallons - 1 tank(s)		

Accommodations

Total Cabins:	-	Crew Cabins:	-
Total Berths:	6	Crew Berths:	1
Total Sleeps:	-	Crew Sleeps:	-
Total Heads:	-	Crew Heads:	-
Captains Cabin:	No		

FEATURES

Principal Features

Electric winch with bow roller, flybridge and cockpit controls
Hot and cold platform swimming shower
Cockpit folding doors from saloon
Radio/CD player with cockpit and flybridge speakers
Refrigerator/freezer
Ceramic hob with extractor fan
Microwave oven
Chart Plotter dual station
Autopilot dual station
Speed and depth instruments
VHF radio with DSC dual station
Trim tabs
Hydraulic power steering
Electric bow thruster
Hot and cold water system
Automatic fire extinguishers
Automatic bilge pumps
Generator

AC shorepower and battery charger
Teak bathing platform and steps
Teak main cockpit floor
Fresh water marina connection
Electric toilets with holding tank

Standard Specifications

Construction

Hand-laid GRP
Gel coat including stripes
Vinylester skin coat with powderbound mat
Stitched multi-axial reinforced single-skin bottom
Balsa-cored hull topsides
PVC foam-cored deck and superstructure
Hull stiffened with longitudinal stringers supported by transverse bulkheads and floors

Deck

Fittings all in stainless steel
Deck cleats in stainless steel
Delta anchor and 40m chain (galvanised)
Electric winch and capstan 24v with deck and helm controls 24v
Stem-head roller and anchor stop
Self-draining chain locker-fender stowage
Pulpit and cockpit rails in stainless steel
Stainless steel fendering with rubber insert
IMCO navigation lights
2 x pantograph wipers 24v, windscreen washers
Ensign staff and socket
6 x fenders and 4 warps
Curved safety glass windscreen

Bathing Platform

Teak laid fixed platform
Fresh water marina connection
Dockside AC shore power connection
Hot and cold swimming shower
Foldaway stainless steel swimming ladder

Aft Cockpit

Self-draining
Moulded staircase to flybridge
Upholstered seating with stowage underneath
Stern safety gates
Engine room access hatch
Overhead lighting 24v
Low level lighting 24v
Teak-laid cockpit and steps

Radio/CD remote control
Cockpit speakers
Boat hook
Hand-held fire extinguisher
Stainless steel folding doors to interior

Flybridge Helm Position

Self-draining
Deflecting screen (acrylic)
Hydraulic steering
Twin Helm seats
Sports steering wheel
Duplicate engine controls and instrumentation
Autopilot, chartplotter and VHF radio
Speed and depth instrument
Magnetic compass
Trim tab control
Instrument cover
Upholstered seating group
Storage below seats
Teak cockpit table
Sunbathing area forward
Wetbar sink with hot and cold water
Stainless steel guard rails and grab rails
Glass holders
Radio/CD remote control
Cockpit speakers

Main Helm Console

Two upholstered helm seats
Console with black gloss fascia
Hydraulic steering
Sports steering wheel
Chart plotter/GPS
Autopilot
VHF radio
Engine instrumentation
Speed and depth instrumentation
Rudder indicator
Magnetic compass
Electric horn
Windscreen wipers and washers
Trim tab controls
12V socket
Glass holders
Hand-held fire extinguisher
Double AC socket

Saloon

Seating group
Dining table
Overhead lighting 24v
Double AC socket
Radio CD with two speakers
Stainless steel sliding cockpit door to aft cockpit
Fitted carpet
Scatter cushions

Galley

Sink and drainer
Hot and cold water supply
Electric refrigerator with freezer compartment
Ceramic 4-ring touch-control hob
Hob extractor fan
Microwave oven
Rubbish bin
6 place crockery set
6 place cutlery set
Cupboard and drawer storage
Double AC socket x 2
Overhead lighting 24v
Hand-held fire extinguisher
First aid kit

Master Aft Cabin

Double berth with drawers beneath
Outboard cabinet with vanity unit
Bedside cupboards
Bedside reading lamps
Forward and aft facing seat with breakfast table
Hanging wardrobe with mirrored door
Overhead lighting 24v
Panoramic windows with opening portholes
Double AC socket x 3
Fitted carpet

Master En Suite Shower Room and Toilet

Electric toilet
Shower taps and accessories
Washbasin
Hot and cold water
Separate shower compartment
Extractor fan
Razor socket 240/110v
Mirrored cupboard

Towel rail
Bath, hand and face towel
Overhead lighting 24v
Opening porthole with Venetian blind
Door to stateroom

Starboard Guest Cabin

Two single berths
Bedside reading lamps
Under-berth stowage
Hanging wardrobe with mirrored door
Overhead lighting 24v
Double AC socket
Fitted carpet

Forward VIP Guest Cabin

Double berth with storage and drawers beneath
Bedside reading lamps
Outboard overhead lockers
Hanging wardrobe
Vanity unit with mirrored locker
Overhead lighting 24v
Panoramic windows with opening portholes
Deck hatch and skylight
Double AC socket x 2
Fitted carpet

Starboard VIP Shower and Toilet/Day Head

Electric toilet
Shower taps and accessories
Washbasin
Hot and cold water
Separate shower compartment
Extractor fan
Razor socket 240/110v
Mirrored cupboard
Towel rail
Bath, hand and face towel
Overhead lighting 24v
Opening porthole with Venetian blind

Engine Compartment and Ancillaries

Soundproofing
Aluminium fuel tanks with electric sender units
Fuel filters/water separators to engines
Fuel filters/water separators to generators
Manual bilge/automatic flood pumps with high-level alarms
Automatic bilge and flood pumps with high-level alarms

Generator exhaust silencers and water separators
Engine exhaust dry risers and water injection
Strainers to all raw water inlets
Power steering – hydraulic control steering
Trim tabs hydraulic control unit
Air intakes fitted with emergency shutdown flaps (automatically operated)
Air distribution fans DC
Air extraction fans DC fitted with butterfly shutdown dampers
Exhaust gas temperature sensor
Engine room fire extinguishing system (FM200)

Electrical System

Generator with underwater silent exhaust
AC dockside connection
Main DC and AC electrical circuits protected by re-settable circuit breakers
Cm8 monitoring
Systems monitoring panel
Galvanic isolator
4 x batteries for engine starting 24v circuit
4 x batteries for domestic power 24v circuit
Battery coupling system
Battery switches controlled from locker in cockpit
Alternator split-charging system
Battery charger for 24v circuits
Water heater
Electrical AC sockets throughout the boat
Electric bow thruster

Underwater Gear

Bow thruster – electric 24v
Seawater strainers – nickel-plated bronze
Full cathodic bonding system to zinc anodes
Hydraulic trim tabs – stainless steel
Propeller shafts – Temet 25
High performance rudders – AB2 bronze
P-brackets – NAB nickel aluminium bronze c/w water lubricated bearing
Self-aligning shaft seal including spare seal
AB2 bronze propellers

Systems

Hydraulic power steering
Electric toilet system with integral macerator 24v
Toilets discharging overboard or to black water tank
Black water tank discharging to dockside or overboard
600 litre fresh water tank with electric sending unit
2,200 litre aluminium fuel tank with electric sending unit
Water pressure system 24v
Hot water tank with immersion heater AC

Washbasins and showers drain to sump box

Sump box automatically discharging overboard

Bilge pumping system 24v

Manual/automatic fire extinguishing system combined with engines, generators and fans shutdown

Auxiliary hydraulics for trim tabs 24v

Miscellaneous

Portable toolkit

Boat hook

4 x mooring ropes

6 x fenders

2 x towel sets

Optional Extras

Hydraulic lifting platform

Air conditioning

Hydraulic gangway

Stern thruster

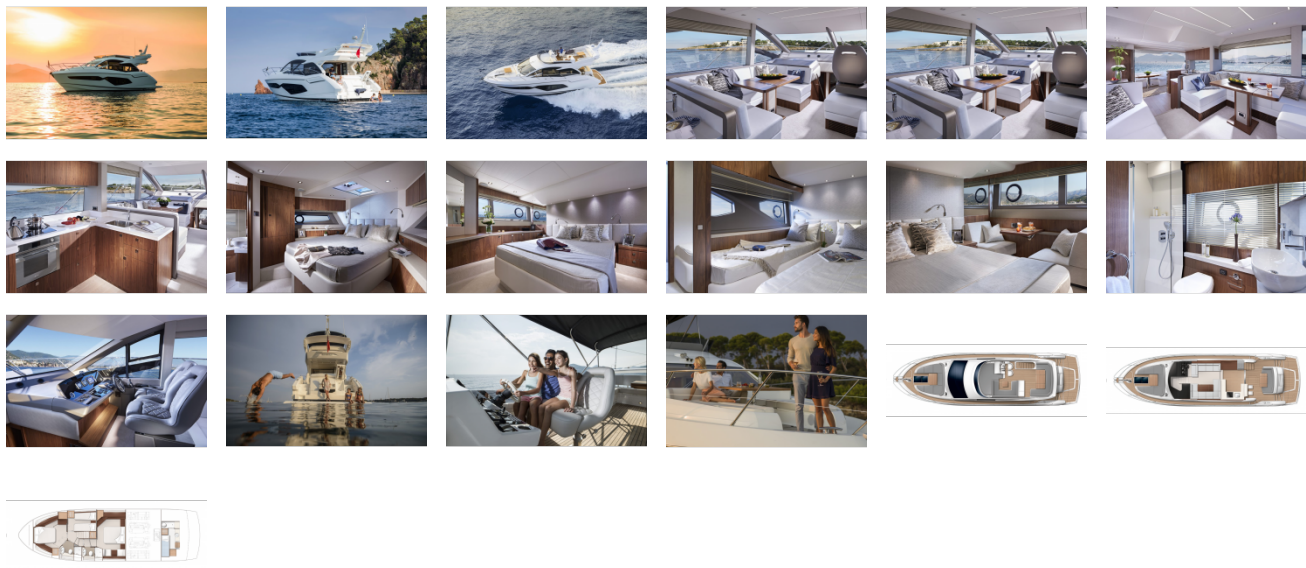
Flybridge teak decking

Teak side decks

Crew cabin

Hard top

GALLERY



Jefferson Beach Yacht Sales
24400 Jefferson Avenue,
St. Clair Shores, MI 48080
Phone: 866-490-5297