



## Jefferson Beach Yacht Sales

24400 Jefferson Avenue,

St. Clair Shores, MI 48080

Phone: 866-490-5297

# Sunseeker San Remo

Boat Type: Cruiser



## OVERVIEW

The San Remo is a spectacle in any waters. Light, spacious and expertly finished, the main saloon is a practical and welcoming space that guarantees space, brightness and privacy. The impeccable styling and refined approach continue below deck, where up to four guests can enjoy a stay in the generously sized cabins.

Outside, two large sunpads and bathing platform are ideal for relaxing in the sun or hosting your own party out at sea. Your own private sanctuary, this exceptional performance cruiser is perfect for days out and long weekends. The ultimate Sunseeker and the winner of the Best Sportscruiser over 45ft category in the Motor Boat Awards 2014.

## SPECIFICATIONS

### Basic Information

Manufacturer:	Sunseeker	Boat Type:	Cruiser
Model:	San Remo	Hull Material:	
Hull Type:		Category:	Power

## Dimensions & Weight

Length:	51.00 ft	Draft - max:	4 ft 3 in - 1.3 meter
LOA:	51 ft 7 in - 15.72 meter	Bridge Clearance:	-
Beam:	14 ft 1 in - 4.29 meter	Dry Weight:	36522 ft
Deadrise Aft:	-		

## Tank Capacities

Fuel Tank:	349 gallons - 1 tank(s)	Holding Tank:	-
Fresh Water Tank:	85 gallons - 1 tank(s)		

## Accommodations

Total Cabins:	-	Crew Cabins:	-
Total Berths:	4	Crew Berths:	-
Total Sleeps:	-	Crew Sleeps:	-
Total Heads:	-	Crew Heads:	-
Captains Cabin:	No		

## FEATURES

### Construction

Hand-laid GRP  
Gel coat including stripes  
Vinylester skin coat with powderbound mat  
Stitched multi-axial reinforced single-skin bottom  
Balsa-cored hull topsides  
PVC foam-cored deck and superstructure  
Hull stiffened with longitudinal stringers supported by transverse bulkheads and floors  
Antifouling

### Deck

Moulded non-slip deck finish  
Fittings all in stainless steel  
Pulpit and cockpit rails  
Stainless steel fendering with rubber insert  
8 stainless steel cleats  
Electric anchor winch and capstan with deck and cockpit controls  
Stainless steel bow roller with anchor stop  
Delta anchor and 30 metre chain (galvanised)  
Chain locker with fender storage  
IMCO navigation lights  
Fuel filler  
Fresh water filler  
Foldaway swimming ladder  
Teak-laid bathing platform and steps  
Hot and cold swimming shower

Ensign staff and socket

Fender tie bar under anchor locker lid

### **Cockpit**

Teak cockpit sole, steps and platform

Self-draining

Safety door

Full wetbar with hot and cold water and cool-box

Dinette seating

Teak table

Folding teak helm seat

Co-pilot seating area

Chart table

Large stern sunbather over garage space

Glass holders

Overhead cockpit lights 12v

Low-level cockpit lights 12v

### **Helm Console**

Console with burr-type walnut fascia

Radar

Autopilot

VHF radio

Leather and chrome steering wheel

Single lever controls

Full analogue engine instrumentation

Speed and depth sounder display

Fuel gauge

Fresh water gauge

Compass

Horn

Trim tab controls

Waterproof plug and socket

2 windscreen wipers and washers

Fire extinguisher

Glass holders

### **Main Cabin/Saloon**

Large folding dinette

Flatscreen television 32"

DVD/Blu-ray/radio 2:1 sound system

Radio/CD with speakers for the cockpit

Stowage beneath seats

Drinks cupboard

Overhead halogen lights 12v

Opening portholes within panoramic windows with mosquito screens and blinds

Deck hatch

Main switch and circuit breaker panel (AC/DC)

Double AC socket  
Choice of interior finishes and veneers  
Scatter cushions  
Fitted carpet  
Wooden steps

### **Galley**

Electric refrigerator  
Electric twin hob  
Microwave  
Hot and cold water  
6 place crockery set  
6 place cutlery set  
Cupboard storage and drawers  
Opening porthole with mosquito screen and blind  
Double AC socket  
Hand-held fire extinguisher  
First aid kit  
Rubbish bin

### **Master Aft Stateroom**

Double bed  
Storage lockers  
2 x reading lights 12v  
Hanging wardrobe  
Overhead halogen lighting  
Large side windows and blinds  
Settee  
Door to toilet/shower  
Two double AC socket  
Flatscreen television 32"  
DVD/CD/radio with stereo speakers  
Fitted carpet

### **Master En Suite Toilet Compartment**

Washbasin  
Taps and accessories  
Hot and cold water  
Mirrored vanity unit  
Toothbrush glass holder  
Soap dish  
Towel ring  
Stowage cupboard  
Electric toilet  
Shower compartment  
Overhead lights  
Opening porthole with mosquito screen and curtain  
Razor socket 240/110v

### **Twin Forward Cabin**

Two single V berths to swing and make double  
Under-berth storage  
Hanging wardrobe  
Storage cupboard  
Deck hatch  
Overhead halogen lighting  
2 x reading lights  
Opening portholes within panoramic windows with mosquito screens  
Double AC socket  
Flatscreen television 22"  
DVD/CD/radio with stereo speakers  
Fitted carpet

### **En Suite Toilet Compartment**

Washbasin  
Taps and accessories  
Hot and cold water  
Mirrored vanity unit  
Toothbrush glass holder  
Soap dish  
Towel ring  
Shower  
Overhead lights  
Electric toilet  
Opening porthole with mosquito screen and curtain  
Razor socket 240/110v

### **Engine Compartment and Ancillaries**

Soundproofing throughout  
Fuel filters/water separator to engines and generators  
FM200 manual/auto fire exit system  
Automatic bilge & flood pumps with high-level alarms  
Air-extraction fans – 24v  
Generator exhaust silencers and water separators  
Engine exhaust dry risers and water injection  
Strainers to all raw water materials

### **Electrical System**

Slow speed generator with underwater silent exhaust system  
AC dockside connection  
Galvanic isolator  
24v DC electrical system with full circuit  
breaker protection  
4 x engine batteries  
4 x domestic batteries  
2 x generator batteries

Alternator split-charging system  
Battery switches controlled from locker in cockpit  
Battery charger  
Water heater  
AC sockets throughout the boat

### **Underwater Gear**

Volvo Penta IPS drive system  
Valves to all underwater skin fittings  
Sea water strainers to engines and generators  
Full cathodic bonding system to zinc anodes  
Stainless steel trim tabs

### **Systems**

Electric toilet system – 24v  
Aluminium freshwater tank  
GRP fuel tank  
Freshwater pressure system – 24v  
Calorifier – 240v  
Grey water stump box and discharge pump – 24v  
Bilge pump system  
FM200 manual/auto fire exit system  
Auxiliary hydraulics  
Hydraulic power steering

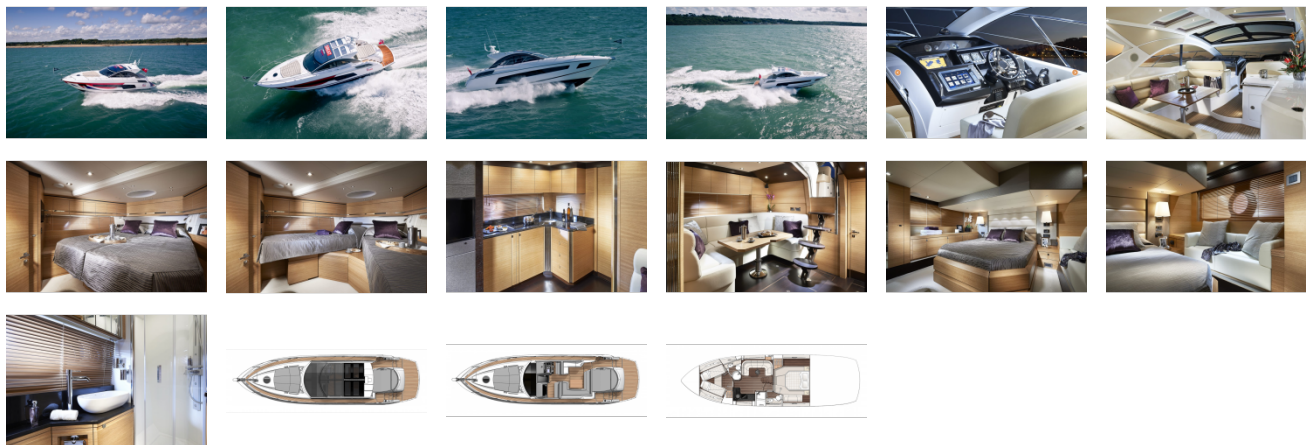
### **Miscellaneous**

2 sets towels  
2 x mooring warps  
6 x fenders

### **Optional Extras**

Air conditioning  
Upgraded generator  
Bow thruster  
Hydraulic lifting platform – maximum capacity for platform and garage combined 350kg/772lb

GALLERY



**Jefferson Beach Yacht Sales**  
24400 Jefferson Avenue,  
St. Clair Shores, MI 48080  
Phone: 866-490-5297