



Jefferson Beach Yacht Sales
24400 Jefferson Avenue,
St. Clair Shores, MI 48080
Phone: 866-490-5297

Carver C34 Coupe

Boat Type: Motor Yacht



OVERVIEW

Turning heads is easy when you make waves.

The new Carver C34 Coupe was designed for a new generation of boaters. Boaters who want bold styling, an expansive interior layout, plus renowned Carver comfort and seaworthiness. All in a compact package that's easy to handle and offers outstanding performance.

No wonder the new C34 Coupe is attracting a whole lot of attention.

SPECIFICATIONS

Basic Information

| | | | |
|---------------|-----------|----------------|-------------|
| Manufacturer: | Carver | Boat Type: | Motor Yacht |
| Model: | C34 Coupe | Hull Material: | Fiberglass |
| Hull Type: | | Category: | Power |

Dimensions & Weight

| | | | |
|---------------|-------------------------|-------------------|------------------------|
| Length: | 34.00 ft | Draft - max: | 3 ft 4 in - 1.01 meter |
| LOA: | 34 ft - 10.36 meter | Bridge Clearance: | 10 ft - 3.05 meter |
| Beam: | 11 ft 6 in - 3.51 meter | Dry Weight: | 16000 ft |
| Deadrise Aft: | - | | |

Tank Capacities

| | | | |
|-------------------|-------------------------|---------------|------------------------|
| Fuel Tank: | 210 gallons - 1 tank(s) | Holding Tank: | 30 gallons - 1 tank(s) |
| Fresh Water Tank: | 78 gallons - 1 tank(s) | | |

Accommodations

| | | | |
|-----------------|----|--------------|---|
| Total Cabins: | 1 | Crew Cabins: | - |
| Total Berths: | - | Crew Berths: | - |
| Total Sleeps: | 6 | Crew Sleeps: | - |
| Total Heads: | 1 | Crew Heads: | - |
| Captains Cabin: | No | | |

FEATURES

STANDARD FEATURES

Construction

- CE Class B
- 10-year structural hull limited warranty
- Hull and deck: Hand-laid structural and non-structural fiberglass and core laminates bonded with infused resin
- Hull bottom: Surface beneath the water line is bead blasted to create an optimal bonding surface for the anti-fouling paint, which is sprayed onto the hull to create a smooth running bottom
- Stringer system: Fiberglass stringers are used throughout the yacht, Interior bulkheads, cabinets and drawers are precision cut, hand-crafted and constructed from a selection of woods and high-pressure laminates. Drawers are lined with laminate
- Insulation, thermal and acoustical
- Meets or exceeds all applicable U.S. Coast Guard safety standards
- NMMA certified
- CE certification available

Propulsion

- Twin Mercruiser 4.5L 250HP – fresh water cooled – Sea Core – B3 Stern Drives

- Engine alarm system
- Stainless Steel propellers – stern drives
- Trim tabs: Bennett Marine® stainless steel, electro-hydraulic trim tabs
- Steering: Teleflex® SeaStar hydraulic steering
- Helm display: Digital LCD display showing tachometer, hour meter, oil pressure, coolant temperature, battery voltage, fuel tank level and rudder angle indicator

Decks & Hardware

- Gunwale trim: rigid vinyl with stainless steel insert
- Cleats: (2) 10" bow cleats (2) 10" spring line cleats and (4) 10" stern cleats (1) 10" anchor cleat
- Hatch: bow, translucent, opening with screen
- Deck fitting: fuel fill (1)
- Deck fitting: fresh water fill (1)
- Deck fitting: waste, pump-out (1)
- Rails: bow, 1" stainless steel top rail, 1" stanchions, welded, with stainless secondary rail
- Grab rails – stainless steel
- Engine compartment power and static ventilation located in superstructure
- Transom platform - Fixed
- Swim ladder – under mount, centerline of swim platform w/recessed grab handle
- Nonskid fiberglass decks
- Vinyl ester barrier coat
- Anti-fouling bottom paint
- Bronze seacocks - all underwater through hulls - double SS hose clamps
- Nylon thru-hull fittings with Stainless Steel Caps – above waterline applications
- Standard white gel coat for hull &, deck
- Black vinyl boot stripe

Helm

- Single helm seat
- Dash console, non-glare
- Engine controls: Engine manufacturer electronic
- Trim tab control
- Steering: hydraulic
- Engine instrumentation: Engine manufacturer LCD display
- Compass: Ritchie, 5" flush mounted, illuminated
- Steering wheel: Sport
- Accessory outlet, 12V (1)
- Dual USB charger outlet
- Provisions for optional navigation electronics package

Salon

- Lights: overhead, 12V, 8 overhead, stainless steel
- Entertainment center: LED/LCD TV – 32"
- Flooring: Wood
- CO detector
- Elevated port sofa
- Opening window – starboard
- Electrical panels: AC installed in seat base

- Salon table: Hi-lo table pedestal
- Sliding door to cabin access, black acrylic, lockable, slides behind helm in open position
- Dash: Upholstered panels

Forward Stateroom

- Sleeping queen-sized berth, storage below
- Shelves: Hull sides
- Deck hatch: White translucent, opening with screen
- Lights: 5 overhead, LED
- Lights: 2 reading
- Lights: Rope light in upper soffit
- Storage: Port hanging locker
- Storage: Foreward starbord alongside berth
- (2) 110V outlets, ground fault protected
- Fixed hull glass window, window blinds
- CO detector

Head

- Door: Locking
- Lights: (1) in shower overhead (3) in head compartment overhead
- Enclosed shower: Molded fiberglass floor liner, plexi door
- Vanity cabinet: Solid surface countertop and vessel sink, storage below
- Mirror: Above vanity, wood framed/storage
- Exhaust fan
- Electric head (fresh water flush)
- Towel bar
- Toilet paper holder
- 110V outlet, ground fault protected
- Fixed hull glass window with opening port

Electrical

- Horn, 12V single trumpet
- Lighting fixtures, 12V (14)
- Navigation lights (USCG/COL REG approved)
- CATV inlet
- Battery switches (1) accessory and (2) engines (1) optional generator
- Battery auto charging relays (ACR's)
- Batteries: (2) engine (1) accessory (1) Optional generator (2) optional bow &, stern thruster
- Electronic battery chargers: (1) Accessory battery and engine batteries (1) Optional generator &, thruster
- Single 110V 30 amp dockside electrical with 50' cord
- High bilge water alarm
- Distribution panel: 110V AC with circuit breakers and voltmeter / amp meter
- Distribution panel: 12V DC with circuit breakers and voltmeter
- Zinc's: Sacrificial (1) Primary (2) trim tabs (2) propeller shaft
- Ground bonding system

Fresh Water & Holding System

- Water system: pressure-demand (hot/cold)

- Water heater: 6-gallon
- Dockside water inlet (pressurized)
- Fresh Water Wash Down – Single outlet in transom storage

Safety & Navigation

- Two Blowers for forced air ventilation – Engine compartment
- Fire extinguisher system – automatic HFC 227
- Bilge pumps: Two 1
- 500 gal. (5678 L) per hour automatic bilge pumps are installed, each with a manual on/off switch at the helm. A float switch for the high bilge water alarm is installed in the engine compartment and forward bilge
- Bilge ventilation: Four ventilator blowers are installed in the engine compartment. Each blower creates 240 CFM volume
- CO alarms: Monitors with alarms are installed in both staterooms and the salon
- Engine alarms: Engine oil pressure and water temperature alarms are installed at the helm
- Fire suppression System: An FE241 Fireboy® automatic fire suppression system is installed in the engine compartment
- Compass: 2.75" flush mount
- illuminated Richie® Navigator compass is mounted at the helm
- Seacocks: Marine grade bronze seacocks are used on all below the waterline through hull openings. Nylon fittings are used on above the waterline outlets
- Spotlight: ITT Jabsco® remote control spotlight mounted on bow rail

Cockpit/Transom/Swim Deck

- Self bailing
- Door: sliding 3 panel, locking
- Courtesy lights – 4
- Lighting: overhead in bridge overhang – 4
- Molded steps: access to side decks
- Cockpit Hatch (1): Engine room access, hinged, gas shock
- Transom storage locker
- Storage under cockpit seats
- Cockpit floor: Removable for engine access
- Engine room lights
- Cockpit seat: L-shaped lounge port
- Cockpit seat: Aft section of backrest folds flat to create a sun pad

Galley

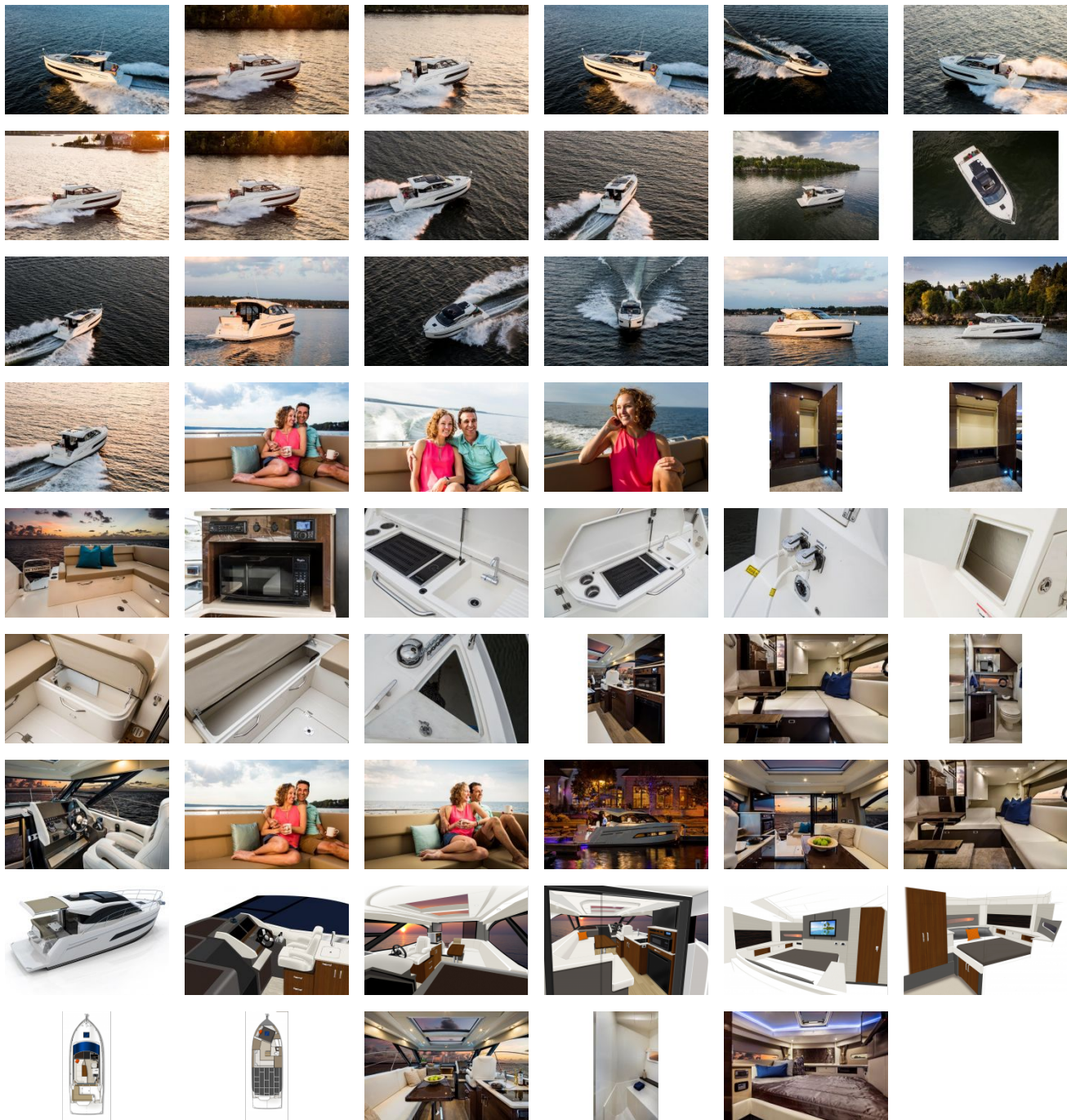
- Drawers: 4
- Stowage cabinet: 4
- Flooring: Vinyl plank
- Countertop: Solid surface
- Under-mount sink with cover: stainless steel with decorator faucet
- Two burner Ceran cook top
- Refrigerator: Dometic
- 110V outlet: 1
- ground fault protected
- Powered exhaust vent
- Lights: overhead

- Microwave
- Slide out trash below the sink
- Storage drawer in port seat base

Guest Stateroom & Aft Lounge

- 'L' shaped sofa – convertible to full size berth
- DC panel – overhead
- (2) 110V outlets, ground fault protected
- CO detector
- Lights: 2 reading
- Lights: 4 LED overhead
- Fixed hull glass window, window blinds w/opening port
- Additional dry storage on starboard side at foot of berth
- Storage: Port and aft overhead

GALLERY



Jefferson Beach Yacht Sales
24400 Jefferson Avenue,
St. Clair Shores, MI 48080
Phone: 866-490-5297