



Jefferson Beach Yacht Sales
24400 Jefferson Avenue,
St. Clair Shores, MI 48080
Phone: 866-490-5297

Marquis 660 Sport Yacht

Boat Type: Motor Yacht



OVERVIEW

A MASTERPIECE OF CRUISING COMFORT.

The 660 Sport Yacht is a true masterpiece of on-water performance and live-aboard comfort, with the distinctive lines, beautifully designed interior spaces and unique hull form that define the Marquis experience. This three-stateroom yacht boasts beautifully appointed master, VIP, and guest accommodations. Its stunning open salon shines with warm woods, lustrous satin finish, expert joinerwork, and premium materials.

SPECIFICATIONS

Basic Information

Manufacturer:	Marquis	Boat Type:	Motor Yacht
Model:	660 Sport Yacht	Hull Material:	Fiberglass
Hull Type:		Category:	Power

Dimensions & Weight

Length:	66.00 ft	Draft - max:	4 ft 6 in - 1.37 meter
LOA:	65 ft 8 in - 20.02 meter	Bridge Clearance:	17 ft 9 in - 5.41 meter
Beam:	17 ft 2 in - 5.23 meter	Dry Weight:	71500 ft
Deadrise Aft:	-		

Tank Capacities

Fuel Tank:	1030 gallons - 1 tank(s)	Holding Tank:	150 gallons - 1 tank(s)
Fresh Water Tank:	255 gallons - 1 tank(s)		

Accommodations

Total Cabins:	3	Crew Cabins:	1
Total Berths:	-	Crew Berths:	-
Total Sleeps:	-	Crew Sleeps:	-
Total Heads:	3	Crew Heads:	1
Captains Cabin:	No		

FEATURES

STANDARD FEATURES

Construction

- Cabinetry: marine-type with doweled and dove-tailed joints, metallic joint reinforcements, stainless steel and silicon bronze fasteners, custom fit
- Walnut wood bulkheads: cabinetry and mouldings throughout cabin with satin finish, impact-resistant acrylic finish on cabinet tops
- Cored hull sides: fiberglass encapsulating high-density foam core below the waterline and endgrain balsa core above the waterline
- Deck plate: 1.75" (4.4 cm) tubular aluminum rails and 1.75" (4.4 cm) endgrain balsa core encapsulated in fiberglass, mechanically fastened and laminated to hull sides around entire circumference, comprises fore deck, side decks and cockpit sole, and main cabin under-sole
- Hull bottom: solid fiberglass with Knytex substrates, sandblasted in preparation for bottom paint assures adherence and eliminates the "peeling effect", vinylester barrier coat
- Steering shelves (2): 0.5" (1.2 cm) aluminum plates
- Stringer system: molded fiberglass grid on hull sides and bottom, high-density foam core
- Structural engine mountings: linear span, longitudinal rail system with multiple-gusseted steel plates bolted through

reinforced, high-density foam-cored stringer members

- Superstructure: unitized flybridge and deck house construction, self-supporting, aluminum truss cage system configured as monocoque structure, welded to base frame of aluminum bar stock mechanically fastened to main cabin upper-sole (1.75" (4.4 cm) tubular aluminum rails and 1.75" (4.4 cm) endgrain balsa core encapsulated in fiberglass), assembly bolted to deck plate through drilled-and-tapped reverse flange mount reinforced with aluminum bar stock
- U.S. Navy-style construction with hull and deck plate forming integrated structural element, "boxed-beam" reinforcement with minimum 1" (2.5 cm) thick structural bulkheads triple-bonded on their circumference
- Window systems: frameless, tinted, tempered safety glass flange-mounted with urethane adhesive/sealant, supported by aluminum truss system

Electrical

- AC/DC distribution panels, includes: circuit breakers, AC digital voltmeters and ammeters, DC digital multimeter
- Batteries:
- Engine Starting: 31 series, 4 total
- Generator Starting: 31 series, (1 Total)
- Accessory: 8D, (2 Total)
- Battery Chargers, Mastervolt® (4 total): Engine: 80 amp
- Accessory: 80 amp Generator: 25 amp
- Shore1 and Shore 2 combiner switch
- Cablemasters: dual
- Courtesy lights: LED
- Dockside inlet: CATV with 50' (15.2 m) of white cord
- Generator: 23 kW 60 Hz (20 kW 50 Hz internationally), Kohler® with sound shield, dedicated 31 series battery, 5 year warranty, premium electrical system. Ground Fault Circuit Interrupt (GFCI) protection: all electrical outlets
- Isolation transformers on the internal shore power lines
- Overhead lights: 4 watt, LED, chrome bezel
- Shore power connectors (2): 50 amp (32 amp 220 V), white
- Shore power cords, Marinco® (2): 75' each, 50 amp (32 amp 220 V), white
- Wiring system: tinned copper strand wire, harnessed, color-coded, labeled, meets or exceeds ABYC standards
- Automatic battery charging management system
- Battery master disconnect switches, remote operated from AC/DC salon panel: Engine (2), Accessory (1), Generator (1)

Water & Holding Systems

- Central grey water drain system
- Fixtures: imported custom taps/spigots, combination polished chrome/nickel finish
- Fresh water storage tank (1): 255 gallons (965 liters), integral fiberglass
- Fresh water tank level monitor
- Grey water sump pump (2): automatic operation, 1000 gph (3785 lph)
- Fresh water system pump, pressurized with filter
- Handshower: fresh water, hot and cold, in transom
- Plumbing: flexible lines constructed of molecularly cross-linked polyethylene, rigid lines constructed of PVC
- Shore water connection with pressure-reduction valve
- Washdown: fresh water, 1 at bow and 1 at transom
- Waste holding tanks, polyethylene, with dockside pumpouts (2 total): (1) 90 gallon (341 liters), (1) 60 gallon (227 liters)

- Waste tank level monitors (2)
- Water heater (1): 26.4 gallons (100 liters)

Safety & Navigation

- 65-5-5-5 marine grade bronze seacocks for all underwater thru-hulls
- Anodes: zinc, sacrificial
- Volvo-Penta automatic corrosion protection (ACP), Battery master disconnect switches, remote control from Salon AC/DC panels
- Battery boxes and covers with restraint system
- Bilge alarm: high water
- Engine room blowers: (5) 240 cubic ft. minute
- Bilge pumps (7): 3700 gallons (14,000 L) per hour each, automatic/manual operation (24V)
- CO detectors throughout cabin and in optional crew quarters
- Compass: Ritchie® Navigator 4.5", (11,4 cm) flush mount, illuminated, dual-read
- Docking lights: transom
- Engine alarms: temperature and oil pressure
- Fire suppression system: automatic, FE227
- Fuel alarm lights (2): indicate water in fuel
- Horns: dual trumpet
- Internal bonding system with size 8 gauge wire
- Molded nonskid surfaces: all walk decks, diamond pattern
- Navigation lights (COLREGS)
- Spotlight: Jabsco, dual bulb 200,000 CP
- Windlass package: Quick Antarres 1500 with 75 lb. (34 kg) stainless steel plow anchor and 300' (91,4 m) of 3/8" (9,5 mm) grade 40 chain

Swim Platform

- Hydraulically-actuated, pantographic, moves out and down, with remote control
- Dual boarding ladder: telescoping, with grab rail, concealed beneath platform extension

Fly Bridge Helm and Lower Helm

- Air vents: (3) at lower helm, (2) at Bridge Helm, 2 directable, 1 fixed
- Access doors (3): provide access to systems and wiring below helm
- Accessory space: for installing navigation electronics
- Adapter: 12V
- Beverage holders (3): stainless steel, self-draining
- Companion helm seats (2): swivel pedestal, high-quality elegant upholstery, embroidery stitching, and arm rests
- Dash: wraparound fiberglass with brushed aluminum accents
- Displays (1 for each engine): digital LCD, engine instrumentation and diagnostics, rudder angle and fuel level
- Helm seat: swivel pedestal, high-quality elegant upholstery, embroidery stitching, arm rests, flip-up seat bolster, adjustable height, stitched Marquis™ Yachts icon
- Lights (2): courtesy, recessed
- Rocker-type panel switches
- Stereo speakers (2):-pre-wired
- Tilt steering wheel
- Windshield: tinted, wraparound, stainless steel frame

- Venturi air deflector

Galley

- Countertops: solid surface with 4" (10 cm) backspash
- Designer décor: consisting of premium wall coverings and fabrics with walnut and zebrano wood trim
- Electrical outlets
- Flooring: Oyster pine wood laminate, satin finish
- Hardware highlights - polished stainless steel
- Lights (3): overhead, recessed
- Lights (3): recessed in bottom of overhead cabinets
- Liquor cabinet - glass shelves, built-in storage for liquor bottles and glassware, blue accent lighting
- Microwave/convection oven/broiler: Contoure®, built-in, brushed stainless steel finish
- Range: electric, cooktop, 3-burner, Seaward®
- Range hood: brushed stainless steel, with 2 lights, exhaust fan, outside vent
- Refrigerator/freezer: Virtrifigo®, 2 drawer, door, bottom freezer, brushed stainless steel finish
- Rocker light switches
- Sink: stainless steel, undermounted
- Storage Cabinets (9): (2) at raised floor: zebrano wood sea rail satin black finish, premium leather accent, (3) at galley lower floor: zebrano wood satin black finish, (4) upper cabinets: semi-gloss black
- Storage drawers (5): zebrano wood satin black finish

Dinette

- Curtain: décor-matched, slides horizontally in top and bottom tracks over entrance door
- Dinette table: combination of walnut and zebrano, high gloss
- Designer décor: consisting of premium wall coverings and fabrics
- Electrical outlets (1)
- Fixed tempered, safety glass windows
- Flooring: Oyster pine wood laminate, satin finish
- Hardware highlights: stainless steel, polished and brushed
- Lights (3): in soffit, recessed, with electronic dimmer control
- Rocker light switches
- Dinette Seating: vinyl upholstery
- Soffits (2): walnut wood, satin finish, port and starboard outboard
- Window treatment: roman shades with recessed headrail

VIP Stateroom

- Berth: queen-size, pillow-top inner-spring mattress, island, with vinyl upholstered bolsters around berth
- Berth step-ups (2): carpeted with solid walnut wood at step riser
- Carpet with pad: advanced stain protection, fade/wear/crush resistant, multi-year warranties
- Designer décor: consisting of premium wall coverings and fabrics
- Electrical outlets
- Entrance door: solid walnut wood and architectural accents, secures open and closed, stainless steel hardware
- Hull portlights - (4) round 12" (30 cm), fixed, non-opening
- Hardware highlights: stainless steel, polished and brushed
- Lights overhead, recessed (7) total: (4) LED, overhead, recessed, (3): LED, over berth head, recessed
- Lights (3): LED, accent, recessed under berth

- Lights (2): Halogen, sconces
- Overhead hatch: translucent, lockable, with self-storing fold-down stainless steel egress ladder
- Rocker light switches
- Sheet set embroidered with Marquis™ logo: fitted sheet, flat sheet, two pillow cases
- Soffit: walnut wood trim, with vinyl upholstered regatta bolster
- Storage drawers (3): designer stainless steel handles
- Wall covering: silk/cotton blend
- Wardrobe lockers (2): full-height, cedar-lined, carpeted, automatic light, mirrored doors, magnetic door catches
- Window treatments: roman shades with recessed headrail and pleated curtains

Master Head

- Cabinet: satin walnut finish with sea rail
- Designer décor: consisting of premium wall coverings and fabrics, complete with walnut and zebrano trim
- Electrical outlets
- Entrance door: solid walnut wood, mirror on stateroom side, secures open and closed, stainless steel hardware
- Exhaust fan
- Flooring: marble
- Hardware highlights: stainless steel, polished and brushed
- Hull portlight: frosted privacy glass with screen
- Lights (6): LED, overhead, recessed (2) in shower, overhead, (4) in head compartment, overhead
- Medicine cabinet: 4 shelves with sea rails
- Mirror: above vanity, wood framed
- Rocker light switches
- Soffit: walnut wood grille satin finish, with vinyl regatta upholstered covering
- Toilet: Tecma® Silent flush, full-size, electric pump flush
- Bidet/additional storage option
- Toilet paper holder: wall-mounted
- Towel bars (2)
- Towel sets (2): bath towel, hand towel, washcloth
- Vanity: stone countertop and backsplash, vessel sink, 2 cabinets beneath with sea rails
- Wall covering: silk/cotton blend
- Shower Compartment
- Light: overhead, recessed
- Shower door: clear glass in gasketed polished aluminum frame
- Shower head: detachable for use as handshower
- Soap dish
- Towel bar
- Walk-in tile shower

VIP Head

- Cabinet: satin walnut finish with sea rail
- Designer décor: consisting of premium wall coverings and fabrics with walnut and zebrano trim
- Electrical outlet
- Entrance doors (2): dual access (guest stateroom and foyer), solid walnut wood, herringbone pattern secure open and closed, stainless steel hardware
- Exhaust fan
- Flooring: stone crema marfil

- Hardware highlights: stainless steel, polished and brushed
- Lights (2): LED, overhead, recessed
- Lights (2): LED, in head compartment, recessed
- Medicine cabinet: satin walnut finish, 2 shelves
- Rocker light switch
- Soffit: satin finish, walnut wood grille, over toilet
- Toilet: Tecma® Silent Flush, full-size, electric pump flush
- Toilet paper holder: wall-mounted
- Towel bars (2)
- Towel ring
- Towel set: bath towel, hand towel, washcloth
- Vanity: stone countertop and backsplash, stainless steel grab rail across front, vessel sink, cabinet beneath
- Wall covering: silk/cotton blend
- Shower Compartment
- Bench seat: integral
- Hull portlight: frosted privacy glass with screen
- Lights: overhead, recessed (2)
- Nonskid sole
- Soap dish
- Shower door: tempered glass in gasketed polished aluminum frame
- Shower head: detachable for use as handshower
- Towel bar

Mechanical

- Engines: Volvo-Penta IPS 3, 1200, 13 liter, 900 hp per engine
- Air conditioning: Marine Air® split system in cabin. 3-zone, 86,000 BTU, with reverse cycle heat dedicated Marinco® shore power connector
- Underwater engine exhaust discharge with automatic bypass
- Fresh water cooling: engines
- Fuel tank: 1030 gallons, fiberglass integral
- Hull portlights: 10" (25 cm), screened multiple latches
- Electronic Fly-by-Wire steering wheel with emergency mechanical bypass
- Propellers: 4 ea. NiBral, 30 in, counter-rotational
- Seawater Strainers
- Trim tabs: stainless steel, electric, 4 ea. 36x9
- Racor water separating fuel filters

Engine Room

- Bilges: coated with white, medium-gloss gelcoat
- Bulkheads: laminated to hull side and hull bottom stringers
- Cockpit hatch access ladder: stainless steel, nonskid steps
- Electrical outlet
- Entrance hatches (2): dual access (cockpit and storage lazarette/optional crew quarters)
- Lights (8): overhead, LED, controls in cockpit and storage lazarette/optional crew quarters

Decks

- Anchor plate: polished stainless steel, with stainless steel clad recessed anchor channel and nylon rollers
- Beverage holder recess
- Bow rail: 1.25" (3.1 cm) O.D., lineal-buffed, 316 stainless steel
- Bow rail stanchions: double-welded (inside and outside), 316 stainless steel, anchored to aluminum backing plates laminated into bulwark
- Lights: 52' neon LED rope deck light
- Lights (8): accent, cabin trunk, led
- Lockers (4 total): (2) forward of windshield, (2) at forepeak

Cockpit

- 114 ft² (10.5 m²) approx., fully guttered and self-draining
- Bridge stairway with stainless steel hand rails: diamond pattern non-skid steps, 4 recessed courtesy lights
- Emergency fire suppression system controls: in starboard transom corner locker
- Engine room hatch: guttered, watertight, polished stainless steel hardware, supported by gas shocks
- Fairleads (2): polished stainless steel, port and starboard
- Lights (2): LED, courtesy with exterior-mounted switch
- Lights (7): LED, overhead, recessed, with exterior-mounted switch
- Lockers (8): storage
- Lounge: accommodates 4 adults, across transom, with cover
- Mooring cleats (4): stainless steel, bolted through aluminum backing plate, inboard-mounted
- Stereo speakers (2)
- Transom gates (2): sliding, concealed while open, fiberglass construction

Fly Bridge

- Beverage holders (8): stainless steel, self-draining
- Cabinet: fiberglass, starboard side
- Electrical outlet
- Electronics arch: welded premium grade aluminum painted with AWLCRAFT® 2000 acrylic urethane topcoat for use in harsh marine environments
- Electronics arch access plates (7): corrosion-resistant polymer attached with noncorroding fasteners and waterproof sealant
- Lights (2): courtesy, recessed
- Lights (5): courtesy, recessed, with exterior-mounted switch
- Lights: in electronics arch, recessed, with exterior-mounted switch
- Lights: accent, courtesy, recessed under bar
- Lounge: command bridge, U-shaped, ultraleather upholstery, accommodates 8 adults, with storage beneath
- Safety rail: 1.25" (3.1 cm) O.D., lineal-buffed, 316 stainless steel, with intermediate rail, around cockpit stairway opening
- Safety rail stanchions: double-welded (inside and outside), 316 stainless steel, anchored to aluminum backing plates laminated into deck
- Self-draining walk surface
- Stereo speakers (2): in electronics arch, pre-wired
- Wet bar: solid surface countertop, under-mounted sink with cold water faucet, 2 storage cabinets beneath

Salon

- AC and DC distribution panels: concealed, hinged

- Cabinets (1): satin black finish countertop, with wood sea rail, and premium leather accent
- Curtain: décor-matched, slides horizontally in top and bottom tracks, over entrance door
- Designer décor: consisting of premium wall coverings and fabrics with walnut and zebrano wood trim
- Electrical outlets
- Entertainment group: 42" (107 cm) Sole® LED TV, Sony® DVD/BluRay, Sony® 5.1 channel home theater receiver, Sonance® in-wall theater speakers, and Apple iPod® dock
- Entrance door: stainless steel frame, fully vertical, convex, sliding, handle latch, keyed deadbolt secures open, neutral density glass with mirrored black exterior, flat black interior, and interior sliding screen
- Fixed tempered, safety glass windows
- Flooring: Oyster pine wood laminate, satin finish
- Hardware highlights: stainless steel, polished and brushed
- Lights (10): in soffit, recessed, with electronic dimmer control
- Lights (4): overhead, in aft recessed, with electronic dimmer control
- Rocker light switches
- Sofa: cloth upholstery, with 2 integral storage drawers beneath
- Soffits (2): walnut wood, satin finish, port and starboard outboard
- Window treatment: roman shades with recessed headrails

Foyer

- Flooring and Steps: Oyster pine wood laminate, satin finish
- Handrail, stainless steel, on stairway
- Lights: LED, courtesy, recessed
- Designer décor: consisting of premium wall coverings and fabrics
- Rocker light switches
- Stairwell trim: walnut wood, bolster with ultraleather upholstery

Master Stateroom

- Air conditioning control
- Berth: queen, pillowtop innerspring mattress, island with storage beneath, wood headboard and padded bolster trim coordinated with hull color
- Carpet with pad: advanced stain protection, fade/wear/crush resistant multi-year warranties
- Deck portlights: port and starboard with décor matched sliding shades
- Desk: computer workstation
- Designer décor: consisting of premium wall coverings and fabrics
- Electrical outlets (2)
- Entrance door: from companionway, secures open and closed, décor matched hardware
- Fixed hull windows with 13" port light (2)
- Lights: rope accent lighting above deck window curtains
- Lights (7): LED, in starboard soffit, recessed, with electronic dimmer control
- Lights (6): LED, in port soffit, recessed, with electronic dimmer control
- Lights (6): LED, recessed, sconce, brushed nickel cover, with electronic dimmer control
- Rocker light switches
- Sheet set embroidered with Marquis™ logo: fitted sheet, flat sheet, two pillow cases
- Storage cabinets: (4) designer stainless steel handles
- Storage drawers: (2) under berth
- Storage drawers: (6) designer stainless steel handles
- Storage shelves: port-hull side

- Window treatments: roman shades with recessed headrails
- WALK-IN CLOSET
- Carpet with pad: advanced stain protection, fade/wear/crush resistant multi-year warranties
- Drawers (3): recessed
- Entrance doors: solid walnut wood, stainless steel hardware magnetic door catches
- Hull portlight: with screen
- Lights: overhead, recessed, automatic operation
- Storage cabinet: solid walnut wood, recessed

Guest Stateroom

- Berths (2): twin, inner-spring mattress, with upholstered headboards, side boards, and bulkhead padded bolsters
- Berth nightstand: walnut high-gloss finish, sapele pommele wood inlay top walnut sea rail, drawer beneath
- Carpet with pad: advanced stain protection, fade/wear/crush resistant, multi-year warranties
- Designer décor: consisting of premium wall coverings and fabrics
- Electrical outlet
- Entrance door: solid walnut wood, secures open and closed, stainless steel hardware
- Hardware highlights: stainless steel, polished and brushed
- Lights (6): LED, overhead, recessed
- Private guest head access
- Rocker light switches
- Skylight
- Sheet sets embroidered with Marquis™ logo: (2) fitted sheet, flat sheet, pillow case
- Soffit: walnut wood trim, with ultraleather upholstered bolster
- Wardrobe lockers (2): full-height, cedar-lined, carpeted, automatic light, mirrored doors, magnetic door catches
- Wall covering: silk/cotton blend

Guest Head

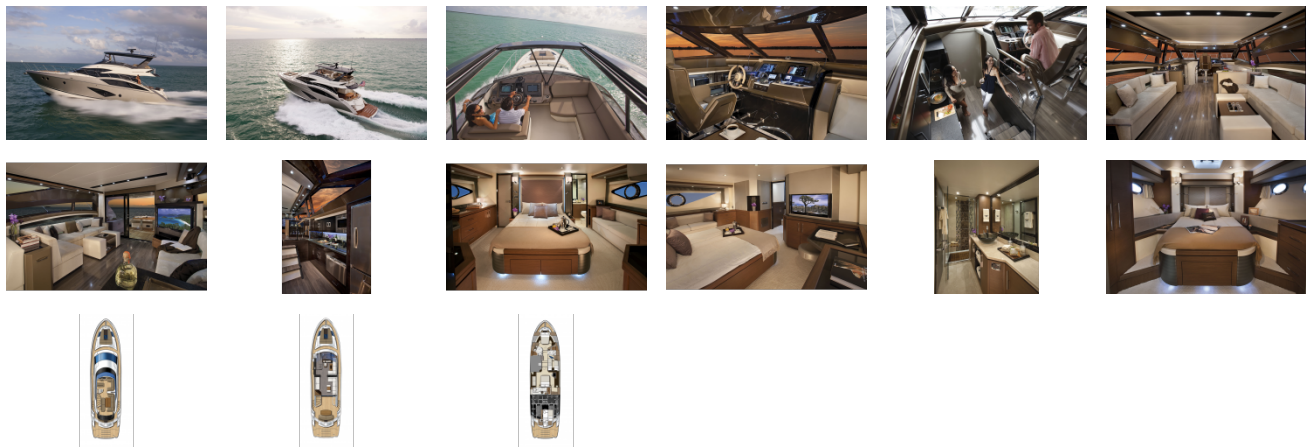
- Cabinet: satin walnut finish with sea rail
- Designer décor: consisting of premium wall coverings and fabrics with walnut and zebrano trim
- Electrical outlet
- Entrance doors (2): dual access (guest stateroom and foyer), solid walnut wood, herringbone pattern secure open and closed, stainless steel hardware
- Exhaust fan
- Flooring: stone crama marfil
- Hardware highlights: stainless steel, polished and brushed
- Lights (2): LED, overhead, recessed
- Lights (2): LED, in head compartment, recessed
- Medicine cabinet: satin zebrano finish, 2 shelves
- Rocker light switch
- Soffit: satin finish, zebrano wood grille, over vanity
- Storage: outboard, overhead
- Toilet: Tecma® Silent Flush, full-size, electric pump flush
- Toilet paper holder: wall-mounted
- Towel bar and ring
- Towel set: bath towel, hand towel, washcloth
- Vanity: Stone countertop and backsplash, stainless steel grab rail across front, vessel sink, cabinet beneath
- Vanity cabinet: mirrored door, single shelf

- Wall covering: silk/cotton blend
- Shower Compartment
- Bench seat: integral
- Hull portlight: frosted privacy glass with screen
- Lights: overhead, recessed (2)
- Nonskid sole
- Soap dish
- Shower door: tempered glass in gasketed polished aluminum frame
- Shower head: detachable for use as handshower
- Towel bar

Pilothouse

- Accessory space: for installing navigation electronics in helm
- Adapter: 12V, at helm
- Cabinet: sapele pommele wood inlay top, satin finish, with zebrano wood sea rail
- Carpet: patterned cut and loop saxony, 100% nylon with advanced stain protection, fade/wear/crush-resistant, padded underlay, multi-year warranties
- Circuit breakers: for helm controls
- Designer décor: consisting of premium wall coverings and fabrics
- Electrical outlets
- Helm: fiberglass with faux walnut burl and leather accents
- Helm seat: ultraleather upholstery, 6-way electrically adjustable
- Lights (5): LED, overhead, recessed
- Lounge: curved, ultraleather upholstery, accommodates 4 adults
- Steering wheel: wood rim and hub, adjustable
- Rocker light switch
- Windshield defoggers
- Windshield wipers (3): pulse, each with fresh water washer

GALLERY



Jefferson Beach Yacht Sales
24400 Jefferson Avenue,
St. Clair Shores, MI 48080
Phone: 866-490-5297