



IMS Yachts
2525 Marina Bay Drive West Suite 205
Fort Lauderdale, FL, 33312
Phone: (954) 374-3434

Dufour 460

Boat Type: Cruiser



OVERVIEW

AN ARCHITECTURAL MASTERPIECE

Result of an intense collaboration between architect Umberto Felci and the Dufour Yachts' Design Office, the Dufour Grand Large 460 is an exceptional cruising yacht. It succeeds in seducing sailing enthusiasts who want a model with three or four cabins and also affirms itself as a new reference in the 45-foot yacht category. Deserving its status as the latest member of the range, this yacht combines exceptional performance and pure comfort.

A new cruising yacht design

The hull and roof of this 13-meter yacht were redesigned to optimise space on board without compromising on exceptional performance. Sailors will appreciate the ease of handling provided by the bow nose equipping the standard version, the ergonomic helm, the self-tacking jib and the optimal motor control.

No sailing enthusiast could resist this yacht's majestic appearance with its new hull and deck design.

Pure comfort

The Dufour Grand Large 460 has an increased number of redesigned living areas for improved comfort, including a bow galley, reading seat and spacious master cabin. No attention to detail has been spared when it comes to creating the perfect relaxation space, with an equipped exterior galley, long sunbathing seats and wide aft transom.

A lot of thought went into the lighting to create a feeling of well-being and warmth. The deck lines are transformed by illuminated handrails whilst the flush stylish deck panels and portholes create bright and elegant interior spaces.

SPECIFICATIONS

Basic Information

Manufacturer:	Dufour	Boat Type:	Cruiser
Model:	460	Hull Material:	Fiberglass
Year:	2020	Hull Type:	
Category:	Sail		

Dimensions & Weight

Length:	46.00 ft	Draft - max:	7 ft 3 in - 2.21 meter
LOA:	46 ft 5 in - 14.15 meter	Bridge Clearance:	-
Beam:	14 ft 9 in - 4.5 meter	Dry Weight:	23722 ft
Deadrise Aft:	-		

Tank Capacities

Fuel Tank:	66 gallons - 1 tank(s)	Holding Tank:	-
Fresh Water Tank:	140 gallons - 1 tank(s)		

Accommodations

Total Cabins:	-	Crew Cabins:	-
Total Berths:	-	Crew Berths:	-
Total Sleeps:	-	Crew Sleeps:	-
Total Heads:	-	Crew Heads:	-
Captains Cabin:	No		

FEATURES

Construction

Hull: Hand-laminated in polyester/glassfibre.

Decoration: Decorative stripes on the hull.

Gelcoat: NPG gelcoat with first mat impregnated with NPG resin forming an optimum barrier against osmosis.

Structure: Hull bottom counter-moulded, floors laminated into the hull.

Deck: Sandwich with injected PVC foam core
Ballast: Keel bolts bear on stainless back-plates
Rudder: Semi-elliptical shape, filled with closed-cell epoxy foam.
Rudder stock: Solid stainless steel.
Non-slip deck surface: Non-slip structured deck surface.

Deck

Hand rails: Solid wood, on coachroof.
Fixed toe rails: Wooden, at the hull/deck join.
Anchor locker: Self-draining with built-in windlass support and anchor chain eyebolt, lockable hatch cover.
Bow pulpits: Seat and separate green/red navigation lights
Stern pulpits: Lifebuoy bracket, jackstaff bracket, navigation light, and opening life-lines with hook.
Stanchions: 8 with 2 rows of life-lines.
Mast foot: Aluminium with halyard return pulleys.
Other: Solid wooden toe-rail.

Deck Fittings

Shroud chainplates: Single chainplate for cap shrouds and lower shrouds.
Safety chainplates: Safety harness chainplates in cockpit floor
Chainplates: 2 backstay chainplates
Midships mooring cleats: 2, aluminium
Mooring cleats: 4, aluminium.
Rubbing strips: 6 stainless, on hull sheerline
Fuel deck fillers: 1
Water deck fillers: 2
Mainsheet tracks: On coachroof with adjusting car.
Self tacking jib track.
Downhaul: With multi-purchase tackle and cascade.
Pulleys: 1 self tacking jib single sheet return pulleys on roof.
Through-deck fitting: Stainless swan-neck for electrical and electronic cables.
Deck organizers: 1 deck organizer for halyard returns.
Halyard winches: 1 halyard winch on coachroof.
Jамcleats: 2 rows of jamcleats port / starboard level with the companionway
Furler line jamcleats: 1 at aft end of sidedeck
Hatch covers: Polyester hatch cover forward of the companionway.

Cockpit

Cockpit bench seats: Teak covered.
Helmsman's seat: Teak covered.
Lockers: 2 large side lockers, lids fitted with struts and fixings for padlocks.
Helm: Dual helm position, wheels
Helm console: Polyester.
Engine control: At starboard helm position
Compasses: 1 compass at each helm position
Gas locker: In starboard aft locker
Stern door: Swings up, with built-in folding stainless bathing ladder
BIB locker: Life raft stowage in dedicated locker fitted with ram.
Handrail: In port stern locker, cold water
Shower: Cold water

Shore supply: Connector in port stern locker

Bathing ladder: Folding stainless bathing ladder

Cockpit floor: Non-slip polyester cockpit floor.

Emergency tiller: Head of rudder stock beneath helmsman's floor for fitting the emergency tiller

Rigging & Sails

Mast: Anodized aluminium with 2 levels of swept spreaders

Rigging: 9/10 fractional

Mast stepping: On deck

Lights: Anchor and steaming lights and deck flood.

Topping lift: Boom topping lift cleats.

Boom: Anodized aluminium fitted with 2 continuous reefers.

Furler: Genoa roller furler.

Standing rigging: Continuous in stainless single-strand cable, chrome-plated bronze rigging screws, comprising: forestay, twin backstay, inter. and lower shrouds.

Preventer shroud: double

Running rigging: "Running rigging in pre-stretched textile including: main sail and self tacking jib halyards, boom topping lift, main sail and self tacking sheets, 2 continuous reef lines, leech tensioner, 2 mainsheet car adjustments, furling line, downhaul tackle."

Mainsail: 2 wide reef strips, with battens

Genoa: Furling genoa with UV-protection (Dacron).

Interior

Woodwork: Real wood veneer in Moabi, solid Moabi

Floors: Moabi laminate.

Doors: Fitted with twin-bolt anti-vibration locks, cabin doors can be blocked in the open position

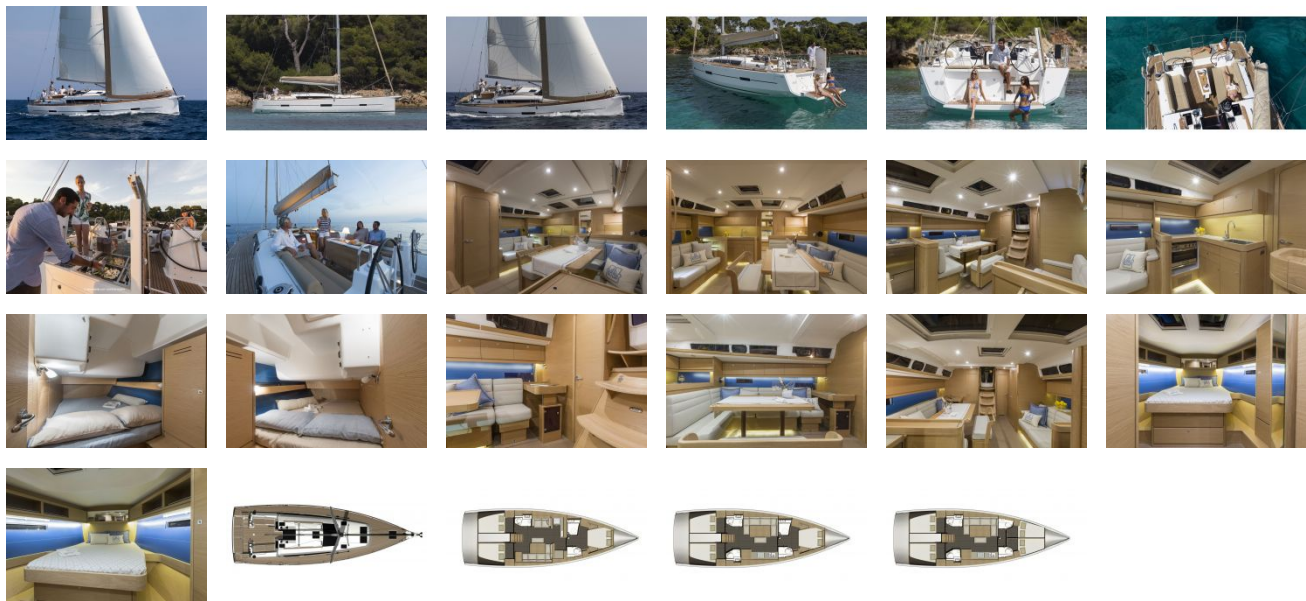
Mattress: Mattresses are in quilted, anallergic fabric.

Cushions: Saloon cushions and cabin mattresses fitted with removable covers.

Head-liner: White painted head-liner.

Versions: 3 cabins, 2 heads, forward galley.

GALLERY



IMS Yachts
2525 Marina Bay Drive West Suite 205
Fort Lauderdale, FL, 33312
Phone: (954) 374-3434