



**IMS Yachts**  
2525 Marina Bay Drive West Suite 205  
Fort Lauderdale, FL, 33312  
Phone: (954) 374-3434

# Dufour 56

Boat Type: Cruiser



## OVERVIEW

## DESIGNED FOR COMFORT & PERFORMANCE

**The flagship of the new Exclusive range, the Dufour Exclusive 56 is synonymous with luxury and comfort and is a stunning yacht that meets the most stringent requirements. This elegant, modern 17-meter sailing yacht with its dynamic lines epitomises luxury.**

**An outstanding sailing yacht that pushes the boundaries of innovation**

This 17-meter yacht brilliantly marries refined design with remarkable innovations. It embodies the boldness of a pioneering project that has managed to keep the essence of a powerful yacht in a sailboat designed to provide the most intense sailing emotions.

The Dufour Exclusive 56 sports an extremely balanced hull, with a powerful aft section, a reduced wetted surface area and appendages perfect for cruising. Its high ballast ratio and hull stability enable the yacht to support a powerful rig without compromising on comfort and safety on board. The sail plan was developed to guarantee

maximum performance with minimum effort.

## Aesthetic genius

On board, the Dufour Exclusive 56 offers all the comfort and luxury features of a yacht, whilst providing everything a sailing enthusiast would need.

Its fluid lines, elegant vertical portholes, horizontal windscreen and rounded edges make this 56-foot sailboat aesthetically striking. It is distinguishable by its meticulous craftsmanship and ultra practical design features. The end result is a unique interior created around a stunning living space.

## SPECIFICATIONS

### Basic Information

Manufacturer:	Dufour	Boat Type:	Cruiser
Model:	56	Hull Material:	Fiberglass
Year:	2020	Hull Type:	
Category:	Sail		

### Dimensions & Weight

Length:	56.00 ft	Draft - max:	8 ft 2 in - 2.49 meter
LOA:	56 ft 3 in - 17.15 meter	Bridge Clearance:	-
Beam:	16 ft 7 in - 5.05 meter	Dry Weight:	38856 ft
Deadrise Aft:	-		

### Tank Capacities

Fuel Tank:	132 gallons - 2 tank(s)	Holding Tank:	-
Fresh Water Tank:	180 gallons - 1 tank(s)		

### Accommodations

Total Cabins:	-	Crew Cabins:	-
Total Berths:	-	Crew Berths:	-
Total Sleeps:	-	Crew Sleeps:	-
Total Heads:	-	Crew Heads:	-
Captains Cabin:	No		

## FEATURES

### CONSTRUCTION

- Hull: Composite sandwich hand-laminated polyester.
- PVC panels are vacuum-bonded for better adhesion to laminate.
- Structure: Hull bottom counter-moulded, floors laminated into the hull.
- Gelcoat: NPG gelcoat with first mat impregnated with NPG resin forming an optimum barrier against osmosis.

- Decoration: Grey for waterline and decoration line
- Deck: Sandwich with injected PVC foam core
- Ballast: Keel in cast iron with stainless steel bolts bear on stainless back-plates (optional shallow draft)
- Rudder: Semi-elliptical shape, filled with closed-cell epoxy foam.
- Rudder stock: Solid stainless steel.
- Rudder quadrant: Stainless steel cables and quadrant 610 mm diamter.
- Non-slip deck surface: Non-slip structured deck surface.

## DECK HARDWARE

- Mooring: 1400W electrical windlass (LEWMAR ) fixed stainless steel anchor arm (32kg delta anchor and 100mt chain OPT)
- LED navigation light and tri-color mast head light
- Bow pulpits: Stainless, opening for easy access and for spinnaker handling
- Stern pulpits: Jackstaff bracket, navigation light, and opening lifelines with hook.
- Stanchions: With 2 rows of life-lines, one opening gate each side.
- Mooring cleat: 6, aluminium.(SIZE)
- Chainplates: 2 backstay chainplates, external side deck chainplates
- Fuel deck fillers: 2
- Water deck fillers: 3
- Safety gear: Safety harness padeye in cockpit floor and wood hand rail along coachroof
- Mainsheet tracks: On coachroof with adjusting car (2440 mm). STD
- Genoa tracks: 2 genoa sheet tracks, plunger-adjustable low-lead cars
- Genoa self tacking track
- Through-deck fitting: Stainless swan-neck for electrical and electronic cables
- Deck organizers: 2 deck 4-sheave organizers for halyard, sheet and reef line returns.
- Halyard winches: 2 halyard winches (T 55 LEWMAR) on coachroof.
- Mainsail halyard side winch ELECTRICAL
- Primary winches: 2 genoa sheet winches (T55 LEWMAR) at helm positions
- Jamcleats: 2 rows of jamcleats port / starboard level with the companionway
- Furler line jamcleats: 1 at aft end of sidedeck
- Hatch covers: Sliding companionway hatch in Plexiglas.
- Flush deck hatches: 5 X T60 + 6 X T20 flush hatches on deck (LEWMAR)
- Sprayhood
- Cockpit bench seats: Teak covered. (1975 mm)
- Helmsman's seat: Teak covered.
- Cockpit floor: Teak cockpit floor(opt)
- Port bench seat: convertible into a sun deck.
- Lockers: 1 large side locker to Stbd with strut-assisted closing and fixing for padlock.
- Helm: Grp instrument console with 2 900mm diameter steering wheels BLACK)
- Cockpit table: wood cockpit table with grp structure
- Cockpit table Storage: storage space (refrigerator and sink OPT)
- Handrail: Stainless, on cockpit table + 1 in each steering column
- Shower: Hot and cold water in aft central section
- Shore supply: Stbd helm position
- Bathing ladder: Foldaway stainless bathing ladder.
- Engine controls: At starboard helm position
- Compasses: 2 on columns
- Gas locker: Under port helmsman's seat
- BIB locker: Under floor

- Emergency tiller: A stainless tiller with deck plate for access

## **SAIL LOCKER / CREW CABIN**

- Large lockable deck hatch T60 hatch
- Ladder, handrails
- Bow thruster access
- Chain locker and windlass access
- As an option, the forepeak can be fitted as a 1 or 2 person crew cabin

## **TENDER GARAGE**

- Opening transom giving access to swim platform / tender garage with ELECTRIC mechanism /OPT
- Tender (opt) can be 3,10m with inflatable bottom / (OPT)
- Tender inflating/deflating electric pump (OPT)
- Access to tender garage is from deck and transom
- Access to steering system and (opt) autopilot

## **RIGGING & SAILS**

- Mast: Anodized aluminium with 2 levels of swept spreaders
- Rigging: 9/10 fractional
- Mast stepping: On deck
- Lights: Anchor and steaming lights and deck flood (LED)
- Topping lift: Boom topping lift cleats.
- Boom: Anodized aluminium equipped for 2 continuous reefs.
- Furler: Manual roller furling genoa system (FACNOR).
- Standing rigging: Continuous in stainless single-strand cable, chrome-plated bronze rigging screws, comprising: forestay, backstay bridle with twin rigging screws, inter and lower shrouds.
- Backstay: double mechanically adjusted
- Running rigging: "Running rigging in pre-stretched textile including: main and genoa halyards, boom topping lift, main and genoa sheets, 2 continuous reef lines, leech tensioner, 1 mainsheet car adjustments, furling line, downhaul tackle. (MAIN and JIB halyard in spectra)
- Mainsail: 2 wide reef strips, with battens and bag.(Dacron)
- Genoa: Furling genoa with UV-protection (Dacron)

## **INTERIOR**

- Woodwork: Moabi finish with various massive wood parts. (Oak is an option) TEAK
- Floors: Moabi laminate.
- Doors: Fitted with twin-bolt anti-vibration locks, cabin doors can be blocked in the open position
- Cushions: Saloon cushions and cabin mattresses fitted with removable covers.
- Head-liner: Lined with wood.
- Versions: 3 cab 2 showers/1WC , 4 cab 2 shower/1 WC, 5cab 2 showers/1WC
- Hull: 8 hull windows
- Coachroof, fixed: 5 fixed ports
- Coachroof, opening: 3 opening ports with curtains
- Hatches: 11 deck hatches
- Indirect lighting: Under ceiling
- Lighting: Numerous spots and reading lights.
- Courtesy light: Low-level lighting around saloon furniture

## **COMPANIONWAY**

- Companionway hatch: Sliding companionway hatch and door in plexiglas with stops and lock.
- Steps: Curved wooden steps
- Engine cover: Hinged wooden engine cover with gas struts.
- Handrails: 2
- Wine cellar: Wine cellar beneath floor in companionway

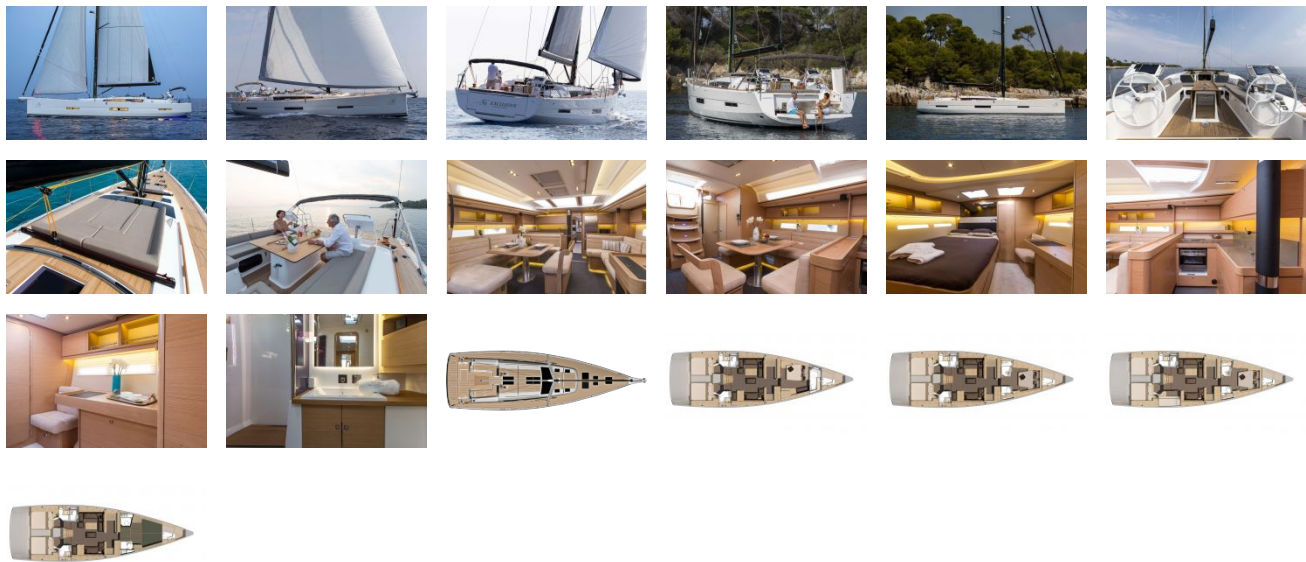
## **SALOON**

- Partially raised saloon position allows a front panoramic view.
- Plenty of natural light and ventilation is guaranteed by the front, side fixed plexi and the hatches in the coachroof
- Direct and indirect lights
- Night courtesy light in the saloon,
- Saloon : U-shaped banquette on port side (2.1 m )
- Central banquette: Sliding, with raising back rest
- Table: 3-function saloon table
- L shaped relaxing sofa to starboard side

## **GALLEY**

- Configurations: the galley is located one step down forward of the saloon and it runs across the full beam of the boat
- Worktop: 'Corian.' synthetic resin with wooden fiddle.
- Sink: Stainless steel bowl sink in port module
- Water: Hot and cold pumped water with brushed stainless single lever mixer tap.
- Gas cooker: 3-burner gas cooker with oven and grill, on gimbals, with stainless hand rail in port side
- Refrigerators: 130 lt front opening fridge Crockery storage: Dowels to retain crockery when heeling.
- Freezer: 65 lt front opening fridge ( Std )
- Stowage: various lockers
- 220 V microwave oven: In stbd hull cubby-hole
- Pump: Sea-water pump built-in under floor to stbd
- Waste bin: Sort compartments, to port

GALLERY



**IMS Yachts**  
2525 Marina Bay Drive West Suite 205  
Fort Lauderdale, FL, 33312  
Phone: (954) 374-3434