



Bayport Yachts
2530 W. Pacific Coast Hwy
Newport Beach, CA 92663
Phone: 949 631 0228

Chris-Craft Launch 38

Boat Type: Cruiser



OVERVIEW

Let the Entertaining Begin.

A teak console houses a complete kitchen that performs double duty. Equipped with an ice maker *and* refrigerator, as well as an outdoor ceramic cooktop *and* a grill, it's always ready to serve, whether it's a day trip or a week-long stay.

SPECIFICATIONS

Basic Information

Manufacturer:	Chris-Craft	Boat Type:	Cruiser
Model:	Launch 38	Hull Material:	Fiberglass
Year:	2020	Hull Type:	Deep Vee
Category:	Power		

Dimensions & Weight

Length:	38.00 ft	Draft - max:	2 ft 7 in - 0.79 meter
LOA:	38 ft 2 in - 11.63 meter	Bridge Clearance:	7 ft 10 in - 2.39 meter
Beam:	12 ft 6 in - 3.81 meter	Dry Weight:	16000 ft
Deadrise Aft:	20.00 °		

Tank Capacities

Fuel Tank:	274 gallons - 1 tank(s)	Holding Tank:	27 gallons - 1 tank(s)
Fresh Water Tank:	50 gallons - 1 tank(s)		

Accommodations

Total Cabins:	-	Crew Cabins:	-
Total Berths:	-	Crew Berths:	-
Total Sleeps:	5	Crew Sleeps:	-
Total Heads:	1	Crew Heads:	-
Captains Cabin:	No		

FEATURES

Standard Features

- Teak Maintenance Kit
- Teak Caulk Color Choice – black or blonde
- 3 Yr - Chris Craft protection plan
- 5 Yr - transferable hull/structural warranty
- Bow Scuff Plate - SS
- Certifications and Standards - NMMA, ABYC, USCG
- Deck Fill Plates - SS
- Deck - diamond pattern non-skid, fiberglass
- Flag/Pennant - embroidered Chris Craft and US Flag kit w/SS magnetic pole and base
- Color Selections - base gel, Ivory Cream
- Color Selections - boot stripe - multiple color selections
- Gunnel Trim Rubrail - molded PVC w/SS insert
- Hardware - bow and stern eyes, SS
- Hardware - bow light cover, SS
- Hardware - chrome plated SS fasteners
- Hardware - cleats, SS mooring
- Hardware - high end fit n finish w/316L SS and Chris Craft logo
- Hardware - thru-hull fittings, SS
- Hatches - vacuum infused w/ SS shocks
- Hull - Chris Craft trademark Tumblehome design
- Hull - deep V bottom w/flared bow
- Hull - deck joint - mechanically, chemically bonded
- Lighting - navigation lights, SS and international compliance
- Logo - SS, Chris Craft branded

- Swim Ladder - 3 step, SS hidden
- Swim Platform – integral
- Swim Platform Grabhandle - SS
- Beverage Holders - Stainless Steel
- Bolsters - padded gunwhale mounted
- Drains – SS
- Fuel System - EPA compliant
- Grabrails - SS
- Helm - compass, dash mounted
- Helm - dash, gauge and switch panels w/silver perforated panels
- Helm - dash light dimmer
- Helm - ignition safety switch(es)
- Helm - model designator, SS
- Helm - steering wheel, mahogany
- Helm - steering, tilt w/power assist
- Helm - stereo remote, MP3/USB inputs w/Fusion Bluetooth enabled
- Ladder - Stainless Steel boarding
- Lighting - LED courtesy
- Outlets/Input - 12v accessory outlet(s)
- Outlets/Input - USB auxiliary input
- Speakers - JL Audio Sound System
- Stereo System - Fusion, AM/FM/Bluetooth/USB
- Stereo System - Premium upgrade with amp and subwoofer
- Stowage - aft deck compartments
- Upholstery Construction - high density foam with antimicrobials and open cell mesh for drying
- Vinyl - heavy duty, stain/UV resistant
- Vinyl - multiple design/color selections
- Windscreen - curved tempered glass
- Windscreen - Stainless Steel Frame
- Battery Charger
- Battery Switch w/breakers
- Battery Tray(s)
- Bilge Pump - w/autofloat System
- Electric Wiring - color coded and numbered w/Duetch connectors
- Electrical Bonding System
- Electric actuated table aft

Standard Equipment

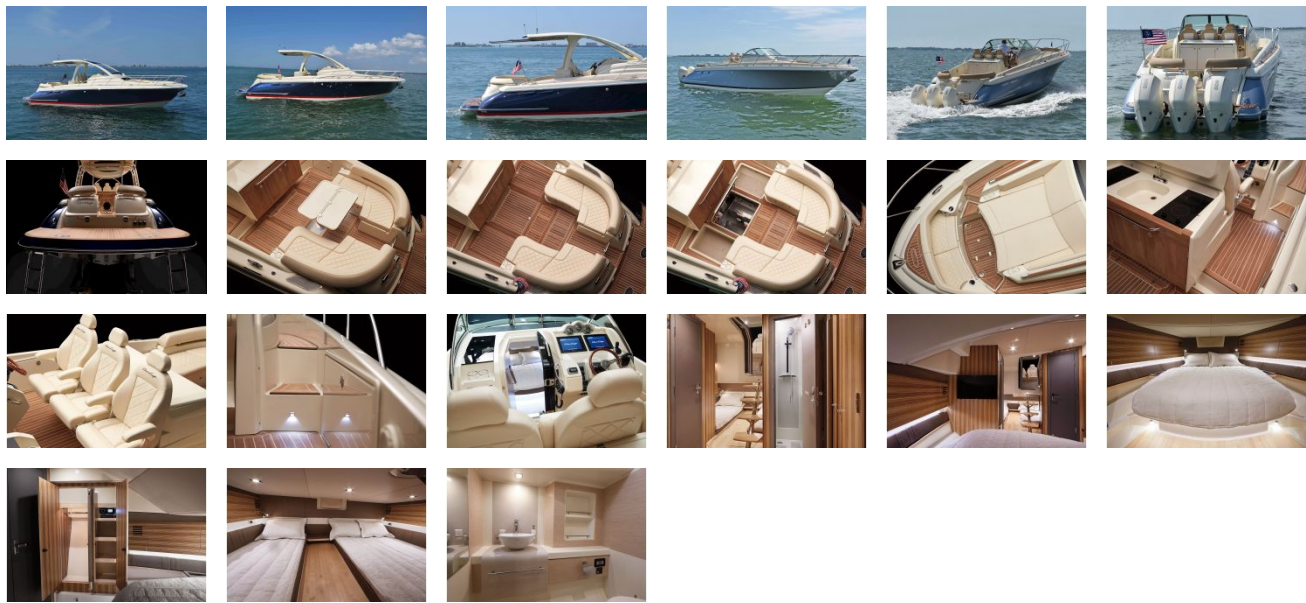
- Twin Mercury V8 8.2L (380x2 HP) B3 FWC DTS
- Teak - bow accents w/SS inserts and Chris Craft SS Logo inlay
- Teak - grab rails
- Teak - helm footpad / footrests
- Air Intakes - SS
- Anchor - bow locker - w/teak and Chris Craft logo inlay
- Ports - shore power inlet(s) w/ galvanic isolator
- Self Bailing Cockpit
- Swim Platform - integral w/ 3-step ladder
- Trim Tabs - Lenco
- Ventilation Grates/Stainless Steel

- Canvas - bimini top w/SS bows and color fast acrylic
- Canvas - console cover
- Canvas - helm seat cover
- CO Detector
- Door - cabin, sliding w/screen
- Galley - grill
- Galley - ice maker
- Galley - microwave
- Galley - refrigerator
- Galley - stove, 2 burner, flush mounted, glass top electric
- Galley Convenience Pkg - cook top, grill, ice maker, refrigerator, microwave, sink and storage (*requires offshore generator)
- Handrails - cabin entry, SS
- Helm - binnacle mount controls
- Helm - depth finder - LCD
- Helm - digital gauge package, Chris Craft branded
- Helm - engine controls, Electronic Control - EVC/DTS/DEC
- Helm - horn, electric
- Helm - horn, electric trumpet(s)
- Helm - trim tab controls
- Outlets/Input - 120v outlet GFCI
- Seating - aft U-shaped
- Seating - forward sunbathing area
- Seating - forward sunlounger, full size w/concealed filler cushion
- Shower - transom (*w/hot-cold)
- Sink - SS with faucet
- Stereo / DVD Combo
- Stowage - aft cockpit, underseat
- Stowage - bow, port and starboard recessed
- Stowage - coaming w/beverage holders
- Stowage - fender, hidden
- Stowage - helm underseat
- Stowage - port and starboard underseat
- Table - teak, aft
- Transom Entrance - gate - SS custom latch
- Transom Entrance - Access from the swim platform
- TV- flatscreen
- Berth - forward, w/coordinated cabin fabrics
- Cabinetry - wood veneer, hand crafted
- CO Detector(s)
- Cushions - custom fitted upholstered
- Doors - hand crafted w/insert Chris Craft logo
- Electric Outlet – GFIC
- Flooring - wood floor w/multiple type selections
- Galley - Skylight
- Interior Wood Package (*Walnut & Whitewashed Oak = Std / Zebra Wood = Opt)
- Lighting - cabin steps
- Lighting - indirect
- Lighting - LED overhead
- Lighting - reading and nightlights

- Lighting - skylight w/screen
- Lighting - Vimar switches w/chrome frame
- Mirror – custom
- Stereo - remote
- Stowage - cedar lined, wardrobe
- Stowage - drawers, some slideout
- Stowage – underberth
- Stowage - wardrobe closets (2)
- TV / DVD - hi-fi w/remote (Cabin or Cockpit)
- Berth - double aft, w/coordinated cabin fabrics
- Berth - single w/coordinated cabin fabrics
- Finishing Accents - wood and leather
- Flooring - wooden
- Lighting - LED overhead
- Lighting - reading
- Portholes - SS w/venetian/blackouts
- Table - bedside
- Blower - w/SS hullside vent
- Countertop - custom, solid surface
- Dockside Pumpout
- Door - lockable entry
- Electric Outlet - GFIC
- Lighting - LED overhead
- Lighting - skylight
- Mirror
- Sink - basin w/hot and cold water
- Toilet - Tecma porcelain w/macerator and dockside pumpout
- Toilet Brush
- Toilet Paper Holder - waterproof
- Toothbrush Holder
- Towel Holder
- Door - wood, main cabin
- Lighting - skylight, opening
- Shower - separate, freshwater w/storage and seat
- AC / Heater - 16,000 btu
- Anode, Zinc
- Batteries 24v - (1) generator
- Batteries 24v - (2) engine starting
- Bilge Pump - highwater w/autofloat Switch
- Bilge System - electric w/blowers
- Bilge Wash-Down Spigot – freshwater
- Electric Wiring - tinned copper
- Electrical Distribution Panel - 120(240) VAC/12 VDC
- Electronics Panel - aluminum, powder coated
- Engine Compartment Steps - aluminum, diamond non-skid
- Engine Hatch - w/SS hinges, electric rams
- Engine Hatch - w/SS hinges and SS gas shocks
- Engine Hatch Insulation - acoustical barrier, Silver Mylar
- Fire Extinguish System - automatic w/manual override
- Fuel Crossover Valve

- Fuel System - aluminum tanks w/anti-siphon valves and electric sending units
- Fuel Tank - (2) w/ decanter
- Galvanic Isolator
- Generator, gas or diesel, 110v or 220v
- Generator - 6Kw, 60Hz
- Macerator w/ball valve (*must select Tecma head)
- Pump - freshwater, pressurized
- Pump - sump pump for drains
- Water / Holding Tank Level Monitor - electric
- Water Heater

GALLERY



Bayport Yachts
2530 W. Pacific Coast Hwy
Newport Beach, CA 92663
Phone: 949 631 0228