



Bayport Yachts
2530 W. Pacific Coast Hwy
Newport Beach, CA 92663
Phone: 949 631 0228

Chris-Craft Commander 44

Boat Type: Cruiser



OVERVIEW

Step Inside Lavish Luxury.

Every inch of its 44-foot hull is pure Chris-Craft. From the gleaming stainless steel to the distinctive teak, it's the ultimate cruiser for making ultimate memories. Vacationing and entertaining come naturally with two cockpit areas and a beautiful private cabin. It's ready. Are you?

SPECIFICATIONS

Basic Information

Manufacturer:	Chris-Craft	Boat Type:	Cruiser
Model:	Commander 44	Hull Material:	Fiberglass
Year:	2018	Hull Type:	
Category:	Power		

Dimensions & Weight

Length:	44.00 ft	Draft - max:	3 ft 10 in - 1.17 meter
LOA:	43 ft 7 in - 13.28 meter	Bridge Clearance:	-
Beam:	13 ft - 3.96 meter	Dry Weight:	29896 ft
Deadrise Aft:	-		

Tank Capacities

Fuel Tank:	396 gallons - 2 tank(s)	Holding Tank:	29 gallons - 1 tank(s)
Fresh Water Tank:	105 gallons - 1 tank(s)		

Accommodations

Total Cabins:	2	Crew Cabins:	-
Total Berths:	-	Crew Berths:	-
Total Sleeps:	5	Crew Sleeps:	-
Total Heads:	1	Crew Heads:	-
Captains Cabin:	No		

FEATURES

STANDARD FEATURES

- Teak Maintenance Kit
- Teak Caulk Color Choice – black or blonde
- 3 Yr - Chris Craft protection plan
- 5 Yr - transferable hull/structural warranty
- Bow Scuff Plate - SS
- Certifications and Standards - NMMA, ABYC, USCG
- Deck Fill Plates - SS
- Deck - diamond pattern non-skid, fiberglass
- Flag/Pennant - embroidered Chris Craft and US Flag kit w/SS magnetic pole and base
- Color Selections - base gel, Ivory Cream
- Color Selections - boot stripe - multiple color selections
- Hardware - bow and stern eyes, SS
- Hardware - chrome plated SS fasteners
- Hardware - cleats, SS mooring
- Hardware - high end fit n finish w/316L SS and Chris Craft logo
- Hardware - thru-hull fittings, SS
- Hatches - vacuum infused w/ SS shocks
- Hull - Chris Craft trademark Tumblehome design
- Hull - deep V bottom w/flared bow
- Hull - deck joint - mechanically, chemically bonded
- Lighting - navigation lights, SS and international compliance
- Logo - SS, Chris Craft branded
- Swim Ladder - 3 step, SS hidden

- Swim Platform – integral
- Swim Platform Grabhandle - SS
- Beverage Holders - Stainless Steel
- Bolsters - padded gunwhale mounted
- Drains - SS
- Grabrails - SS
- Helm - compass, dash mounted
- Helm - dash, gauge and switch panels w/silver perforated panels
- Helm - dash light dimmer
- Helm - ignition safety switch(es)
- Helm - model designator, SS
- Helm - steering wheel, mahogany
- Helm - steering, tilt w/power assist
- Helm - stereo remote, MP3/USB inputs w/Fusion Bluetooth enabled
- Ladder - Stainless Steel boarding
- Lighting - LED courtesy
- Outlets/Input - 12v accessory outlet(s)
- Outlets/Input - USB auxiliary input
- Speakers - JL Audio Sound System
- Stereo System - Fusion, AM/FM/Bluetooth/USB
- Stereo System - Premium upgrade with amp and subwoofer
- Stowage - aft deck compartments
- Upholstery Construction - high density foam with antimicrobials and open cell mesh for drying
- Vinyl - heavy duty, stain/UV resistant
- Vinyl - multiple design/color selections
- Windscreen - curved tempered glass
- Battery Charger
- Battery Switch w/breakers
- Battery Tray(s)
- Bilge Pump - w/autofloat System
- Electrical Bonding System

Standard Equipment

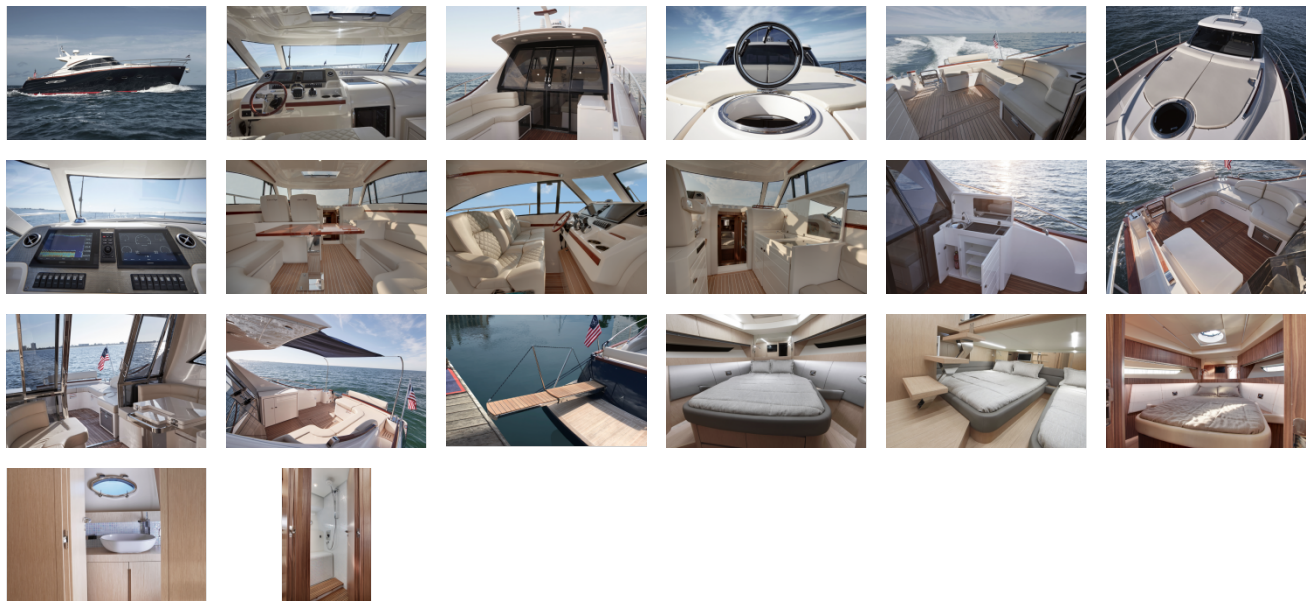
- Volvo Penta IPS 600 D6-435HP with Joystick
- Heritage Trim Edition
- Mahogany Hand Rails - forward deck access and bow
- Teak - cockpit floor, full
- Teak - helm footpad / footrests
- Teak - swim platform
- Air Intakes - SS
- Anchor - roller, integrated SS
- Anchor - windlass w/SS anchor, line / chain
- Certifications - CE (includes fire extinguishing system)
- Color Selections - bottom paint, anti-fouling
- Deluxe Coupe Package*

- Hardware - bow rail, high profile SS
 - Hardware - fairleads (2), SS
 - Lighting - remote spot
 - Portholes (4) stainless steel
 - Ports - fuel fill (2)
 - Ports - shore power inlet(s) w/ galvanic isolator
 - Ports - waste unload
 - Ports - water fill
 - Self Bailing Cockpit
 - Sunroof - opening (hardtop only)
 - Swim Platform - integral w/ 3-step ladder
 - Trim Tabs - Lenco
 - Ventilation Grates/Stainless Steel
 - Washdown - raw water
 - Bow Rails, SS
 - Canvas - Aft Shade/bimini, custom w/ SS support
 - Canvas - Aft privacy curtain (hardtop only)
 - CO Detector
 - Door - cabin, sliding w/screen
 - Galley - grill
 - Galley - microwave
 - Galley - refrigerator
 - Galley - stove, 2 burner, flush mounted, glass top electric
 - Galley - w/wet bar, cutting board and storage
 - Handrails - cabin entry, SS
 - Helm - binnacle mount controls
 - Helm - depth finder - LCD
 - Helm - digital gauge package, Chris Craft branded
 - Helm - engine controls, Electronic Control - EVC/DTS/DEC
 - Helm - horn, electric
 - Helm - horn, electric trumpet(s)
 - Helm - trim tab controls
 - Lighting - Spreader Lights forward and aft
 - Lighting - LED ceiling lights
 - Outlets/Input - 120v outlet GFCI
 - Seating - forward sunbathing area
 - Seating - helm, double driver's side w/flip-up bolster (*electric optional)
-
- Seating - aft L-shaped w/sofa
 - Seating - large sofa w/ life raft storage
 - Seating - portside, aft facing sun lounger
 - Shower - transom (*w/hot-cold)
 - Sink - SS with faucet
 - Skylight – Hardtop
 - Stereo / DVD Combo
 - Stowage - aft cockpit, underseat
 - Stowage - bow, port and starboard recessed
 - Stowage - coaming w/beverage holders
 - Stowage - fender, hidden

- Stowage - port and starboard underseat
 - Transom Entrance - gate - SS custom latch
 - Transom Entrance - Access from the swim platform
 - TV- flatscreen
 - Windscreen Wipers - w/washer(s)
 - Berth - forward, w/coordinated cabin fabrics
 - Cabinetry - wood veneer, hand crafted
 - CO Detector(s)
 - Cushions - custom fitted upholstered
 - Door - forward berth, wood
 - Doors - hand crafted w/insert Chris Craft logo
 - Electric Outlet - GFIC
 - Finishing Accents - wood and leather
 - Flooring - wood floor w/multiple type selections
 - Galley - Countertop, solid surface
 - Hatch - SS w/blinds
 - Interior Wood Package (*Walnut & Whitewashed Oak = Std / Zebra Wood = Opt)
 - Lighting - cabin steps
 - Lighting - indirect
 - Lighting - LED overhead
 - Lighting - reading and nightlights
 - Lighting - skylight w/screen
 - Lighting - Vimar switches w/chrome frame
 - Mirror - custom
 - Portholes - (5) 2 cabin, head, shower, dinette
 - Safebox
 - Stereo - remote
 - Stowage - cedar lined, wardrobe
 - Stowage - drawers, some slideout
 - Stowage - underberth
 - Stowage - vanity locker
 - Stowage - wardrobe closets (2)
 - TV / DVD - hi-fi w/remote (Cabin or Cockpit)
 - Berth - double aft, w/coordinated cabin fabrics
 - Berth - single w/coordinated cabin fabrics
 - Door - wood, main cabin
 - Finishing Accents - wood and leather
 - Flooring - wooden
-
- Lighting - LED overhead
 - Lighting - reading
 - Portholes - SS w/venetian/blackouts
 - Stowage - cedar lined, wardrobe
 - Table – bedside
 - Door - wood, main cabin
 - Electric Outlet - GFIC
 - Fittings - SS hardware
 - Flooring - wooden
 - Lighting - LED overhead

- Mirror
- Porthole - SS w/venetian blinds
- Sink - basin w/hot and cold water
- Stowage - lower cabinet
- Stowage - vanity
- Toilet - Tecma porcelain w/macerator and dockside pumpout
- Door - wood, main cabin
- Flooring – teak
- Seating - teak shower
- Shower - full sized freshwater w/mosaic coating
- AC / Heater - 40,000 btu
- Anode, Zinc
- Batteries 24v - (1) generator
- Batteries 24v - (2) engine starting
- Bilge Pump - highwater w/autofloat Switch
- Bilge System - electric w/blowers
- Cable Master - Glendinnings GN7 50a
- Electrical Distribution Panel - 120(240) VAC/12 VDC
- Electronics Panel - aluminum, powder coated
- Engine Compartment Stowage
- Engine Hatch - w/SS hinges and SS gas shocks
- Engine Hatch Insulation - acoustical barrier, Silver Mylar
- Filter - diesel decanter
- Filter - diesel generator
- Fire Extinguish System - automatic w/manual override
- Fuel Crossover Valve
- Fuel System - aluminum tanks w/anti-siphon valves and electric sending units
- Fuel Tank - (2) w/ decanter
- Galvanic Isolator
- Generator, gas or diesel, 110v or 220v
- Generator - 6Kw, 60Hz
- Macerator w/ball valve (*must select Tecma head)
- Pump - freshwater, pressurized
- Pump - greywater
- Pump - sump pump for drains
- Steering System - V hydraulic
- Water / Holding Tank Level Monitor - electric
- Water Heater
- Water Ready Package* (*requires battery tray and switch option)

GALLERY



Bayport Yachts
2530 W. Pacific Coast Hwy
Newport Beach, CA 92663
Phone: 949 631 0228