



Jefferson Beach Yacht Sales
24400 Jefferson Avenue,
St. Clair Shores, MI 48080
Phone: 866-490-5297

Sunseeker 76 Yacht

Boat Type: Motor Yacht



OVERVIEW

The stunning all-new 76 Yacht gives you everything you'd want from a Sunseeker, and so much more.

Performance, style and space – the all-new 76 Yacht is unmistakably Sunseeker from the exceptional sea-keeping of the very latest deep-V hull design to the class leading space throughout her beautifully appointed decks – this incredible new yacht is without doubt the new benchmark for her class.

Not only does this model cut an impressive silhouette on the horizon, an expanse of glass and sunlight welcomes you on board the 76 Yacht, and the main deck allows you to entertain with an almost 360 degree view of your surroundings.

For life 'al fresco' her exterior decks provide unprecedented levels of space and flexibility that can be adapted to suit any needs. On the flybridge choose a spa tub, an allocated spot for your jet-ski or additional sunbeds to maximise the space as you wish. Complement the superyacht feel with any number of layouts including the installation of a cocktail bar.

For even further customisation, your cockpit can be adapted for additional lounge seating or cocktail bar, with the stern equipped for an additional mini beach club, complete with a barbecue grill, fold-out seating and a rain shower, perfect for entertaining family and friends, making the most of the extended bathing platform, which can accommodate a Williams 445 tender.

The 76 Yacht's impressive layout continues out on the foredeck, where again space is maximised and large twin sunbeds, fore/aft seating and optional refrigeration ensure this a highly sociable area too.

The new 76 Yacht – Freedom uninterrupted.

SPECIFICATIONS

Basic Information

Manufacturer:	Sunseeker	Boat Type:	Motor Yacht
Model:	76 Yacht	Hull Material:	
Hull Type:		Category:	Power

Dimensions & Weight

Length:	76.00 ft	Draft - max:	5 ft 7 in - 1.7 meter
LOA:	77 ft 5 in - 23.6 meter	Bridge Clearance:	-
Beam:	19 ft 6 in - 5.94 meter	Dry Weight:	118140 ft
Deadrise Aft:	-		

Tank Capacities

Fuel Tank:	1585 gallons - 1 tank(s)	Holding Tank:	115 gallons - 1 tank(s)
Fresh Water Tank:	370 gallons - 1 tank(s)		

Accommodations

Total Cabins:	-	Crew Cabins:	-
Total Berths:	-	Crew Berths:	-
Total Sleeps:	-	Crew Sleeps:	-
Total Heads:	-	Crew Heads:	-
Captains Cabin:	No		

FEATURES

Standard Specifications

Construction

- Hand-laid GRP
- Gel coat including stripes
- Vinylester skin coat with powderbound mat
- Stitched multi-axial reinforced single-skin bottom
- Balsa-cored hull topsides
- Cored deck and superstructure

- Hull stiffened with longitudinal stringers supported by transverse bulkheads and floors

Deck

- Fittings all in stainless steel
- 8 stainless steel deck cleats
- Pulpit and cockpit rails
- Stainless steel fendering with rubber insert
- Stainless steel bow roller with anchor stop
- Stainless steel bow plate
- Delta anchor 50kg and 60m 12mm chain (galvanised)
- Electric bow winch and capstan with deck, cockpit and flybridge controls 24v
- Chain locker – fender stowage
- Fender tie bar under anchor locker lid
- Fore deck storage lockers
- Fore deck seating
- Curved safety glass windscreen
- 3 x Pantograph windscreen wipers 24v DC and washers
- Fuel fillers port and starboard
- Fresh water filler
- IMCO navigation lights
- Remote spotlight 24v
- Ensign staff and socket
- 8 fenders
- 6 warps
- Hull antifouling

Bathing Platform

- Hydraulic lifting platform – Max 450kg
- Teak-laid bathing platform and steps
- Hot and cold swimming shower
- Fresh water marina connection
- Dockside mains shore power connection
- Stainless steel swimming ladder

Flybridge

- Access hatch and stairs to cockpit
- Self-draining
- Acrylic deflecting spray screen
- Twin helm seats
- Hydraulic steering
- Duplicate engine controls and instrumentation
- Duplicate autopilot controls
- Second station radar/chart plotter and VHF
- Magnetic compass
- Rudder indicator
- Trim tab control
- Cockpit speakers
- Two seating groups
- Folding teak table on stainless steel leg

- Instrument cover
- Stainless steel guard rails and grab rails
- Glass holders either side of sunbed and console
- Wetbar with hot and cold water, refrigerator, ice maker
- Top-loading cool box and griddle
- Low-level LED lighting
- LED lighting under radar arch

Aft Cockpit

- Teak-laid cockpit floor
- Self-draining
- Partial moulded staircase to flybridge with
- teak treads
- Cockpit refrigerator
- Stern seating
- Stern safety gates
- Engine room access hatch
- 2 x stern capstan winches 24v and fairleads
- Rope lockers
- Cockpit speakers
- Overhead cockpit lights 24v
- Low-level courtesy lights aft cockpit 24v
- Teak table with folding top fitted on stainless steel leg

Main Helm Console

- Portside observation area seating group
- Upholstered helm seats
- Console with gloss black fascia panels
- Leather rimmed chrome steering wheel
- Hydraulic power steering
- Radar/chart plotter with GPS
- Autopilot system
- Electronic speed and depth sounder
- VHF radio with DSC
- Engine instrumentation
- Touchscreen monitoring panel
- Trim tab controls
- Compass
- Horn
- Switch panels
- Windscreen wipers with washers
- Demisters
- 12v socket
- Glass holders
- Double AC socket
- Hand-held fire extinguisher
- Side opening door to side deck

Saloon

- Flush stainless steel glazed sliding door to aft cockpit
- Air conditioning
- Television (55")
- Blu-ray/CD/DVD system
- CD/radio for exterior system
- Coffee table and ottoman
- LED overhead lighting 24v
- 2 x table lamps
- 2 x double AC sockets
- Scatter cushions
- Choice of interior finishes and veneers
- Fitted carpet

Dining

- Large dining area with formal dining table and 8 chairs
- Access stairs to the lower decks
- LED overhead lighting 24v
- 2 x double AC sockets
- Fitted carpet

Galley

- Refrigerator and freezer
- 4 burner ceramic hob
- Extractor fan
- Microwave oven
- Stainless steel sink
- Dishwasher
- Hot and cold water
- Rubbish bin
- 8 place crockery and cutlery set
- 8 Champagne flutes and 8 whisky glasses
- 2 x double AC sockets
- Hand-held fire extinguisher
- First aid kit

VIP Forward Stateroom

- Double berth
- Drawer storage beneath
- Wardrobe
- Dressing table with mirror and stool
- LED overhead lights 24v
- 2 x reading lights 24v
- 2 x panoramic windows with opening ports and blinds
- Deck hatch with screen
- 2 x double AC sockets
- Television (40")
- Radio/CD/DVD player
- Air conditioning
- Door to en-suite toilet/shower

- Fitted carpet

VIP En Suite Shower Room

- Electric toilet
- Washbasin taps and soap dispenser
- Toothbrush and glass holder
- Towel ring and towels
- Mirrored vanity unit
- Separate shower compartment
- Extractor fan
- LED overhead light 24v
- Opening porthole with mosquito screen and blind
- Razor socket 240/110v

Aft Master Stateroom

- Panoramic windows with opening ports and blinds
- Double berth
- Under-berth drawers and storage
- Bedside cabinets
- Fixed settee
- Dressing table with mirror and stool
- LED overhead lights 24v
- Table lamp
- 2 x reading lights 24v
- 2 x double AC socket
- Television (55")
- Blu-ray player
- Air conditioning
- Two wardrobes
- Door to en-suite toilet and shower
- Fitted carpet

Master En Suite Shower Room

- Electric toilet
- Two washbasins, taps and soap dispenser
- Toothbrush and glass holder
- Towel ring and towels
- Mirrored vanity unit
- Separate shower compartment
- Extractor fan
- LED overhead light 24v
- Opening porthole with mosquito screen and blind
- Razor socket 240/110v

Starboard Guest Cabin

- Double berth
- Drawers beneath
- Bedside units
- Dressing table with stool

- 2 x reading lights 24v
- Wardrobe
- LED overhead lights 24v
- Opening porthole with mosquito screen and blinds
- 2 x double AC sockets
- Air conditioning
- Television (32")
- Radio/CD/DVD player

Starboard En Suite Shower Room

- Electric toilet
- Wash basin, taps and soap dispenser
- Toothbrush and glass holder
- Towel ring and towels
- Mirrored vanity unit
- Separate shower compartment
- Extractor fan
- LED overhead light 24v
- Opening porthole with mosquito screen and blind
- Razor socket 240/110v

Port Guest Cabin

- 2 single berths
- Under-berth storage
- 2 x reading lights 24v
- Wardrobe with mirrored door
- LED overhead lights 24v
- Opening porthole with mosquito screen and blind
- Double AC socket
- Air conditioning
- Television (22")
- Radio/CD/DVD player

Port En Suite Shower Room

- Electric toilet
- Washbasin taps and soap dispenser
- Toothbrush and glass holder
- Towel ring and towels
- Mirrored vanity unit
- Separate shower compartment
- Extractor fan
- LED overhead light 24v
- Opening porthole with mosquito screen and blind
- Razor socket 240/110v

Crew Cabin

- Entrance door from Bathing Platform
- Double berth
- Wardrobe

- Storage lockers
- Stern window with blind
- Opening porthole with mosquito screen and curtain
- LED overhead lighting 24v
- Reading lights 24v
- Double AC socket
- Air conditioning
- Washer dryer
- Separate shower room with hot and cold water
- Electric toilet and holding tank
- Shaver socket 240/110v

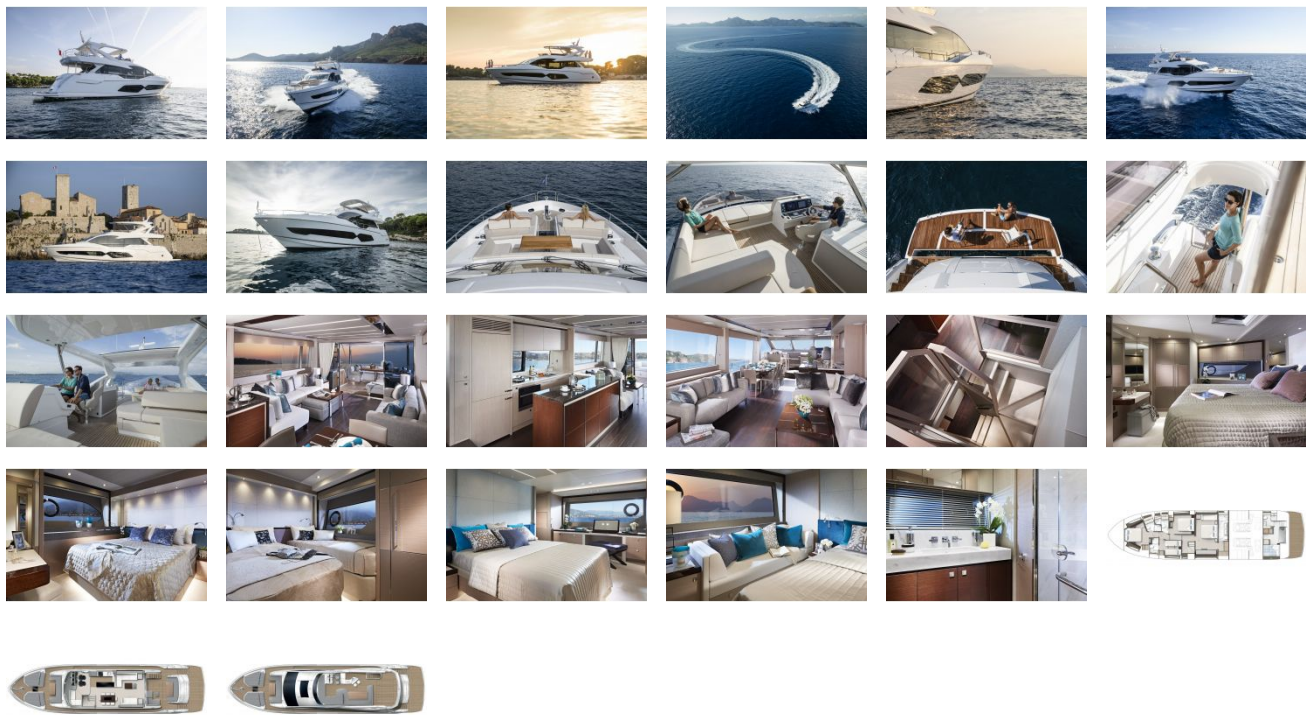
Engine Compartment and Ancillaries

- Soundproofing
- Aluminium fuel tanks with electric sender units
- Fuel filters/water separators to engines
- Fuel filters/water separators to generator/s
- Manual bilge/automatic flood pumps with high-level alarms 24v
- Generator exhaust silencers and water separators
- Engine exhaust dry risers and water injection
- Strainers to all raw water inlets
- Power steering – hydraulic control steering 24v
- Lifting platform hydraulic control unit 24v
- Trim tabs hydraulic control unit 24v
- Air intakes fitted with emergency shutdown
- flaps (automatically operated)
- Air distribution fans 24v
- Air extraction fans fitted with shutdown dampers 24v
- Exhaust gas temperature sensor

Electrical System

- Slow speed generator with underwater silent exhaust and sound box
- Shore power dockside connection
- Galvanic isolator
- 24v and 12v electrical system with full circuit breaker protection
- 8 x starter batteries 24v circuit
- 6 x domestic batteries 24v circuit
- Alternator split charging system
- Remote battery switches controlled from locker in cockpit
- Battery charger for 24v circuits
- AC water heater
- AC sockets throughout the vessel
- 24v hand light and cable

GALLERY



Jefferson Beach Yacht Sales
24400 Jefferson Avenue,
St. Clair Shores, MI 48080
Phone: 866-490-5297