



**Jefferson Beach Yacht Sales**  
24400 Jefferson Avenue,  
St. Clair Shores, MI 48080  
Phone: 866-490-5297

# Viking 62C

Boat Type: Sport Fishing



## OVERVIEW

### Here Comes the Viking 62 Convertible

Building a better boat every day is the philosophy that has guided the Viking Yacht Company for over a half century. New boats have been our mainstay positioning Viking as best in its class, with a stellar reputation for ground breaking innovation, envious performance and unimpeachable style.

The Viking 62 Convertible represents the newest ground breaking champion in the history of the world's largest and most copied manufacturer of convertible sportfishing yachts. We cordially invite you to contact your Viking dealer to learn more about this new model and arrange a sea trial and factory tour of our 862,000 square-foot facility.

## SPECIFICATIONS

### Basic Information

Manufacturer:	Viking	Boat Type:	Sport Fishing
Model:	62C	Hull Material:	Fiberglass
Hull Type:	Deep Vee	Category:	Power

### Dimensions & Weight

Length:	62.00 ft	Draft - max:	5 ft 2 in - 1.58 meter
LOA:	63 ft 1 in - 19.23 meter	Bridge Clearance:	-
Beam:	18 ft 11 in - 5.77 meter	Dry Weight:	94025 ft
Deadrise Aft:	-		

### Tank Capacities

Fuel Tank:	1800 gallons - 1 tank(s)	Holding Tank:	-
Fresh Water Tank:	310 gallons - 1 tank(s)		

### Accommodations

Total Cabins:	3	Crew Cabins:	-
Total Berths:	-	Crew Berths:	-
Total Sleeps:	-	Crew Sleeps:	-
Total Heads:	3	Crew Heads:	-
Captains Cabin:	No		

## FEATURES

The 62 Convertible is a showpiece in the Viking tradition with a fusion of leading edge engineering. To optimize its strength to weight ratio, the composite cored hull is resin infused with a high modulus of Dupont's Kevlar, carbon fiber and knitted fiberglass laminates selected to reduce weight while increasing the overall physical properties of the structure. Similarly, interior stateroom and hanging locker doors, as well as cabinet fronts throughout the yacht incorporate honeycomb coring for further weight reduction. The 62 Convertible also has recessed engine cooling water pickups, refined propeller pocket entry to enhance flow to the five-bladed wheels for reduced noise with better traction, and modified architecture to the struts and rudders adding to an efficient and slippery running surface delivering speeds in excess of 42 knots with a pair of Caterpillar C32-A engines rated at 1,925mhp.

Abundantly detailed, the profile of the 62 Convertible makes a powerful statement. The unbroken sheer sweeps gracefully bow to stern. Nearly eight feet of freeboard at the bow along with the gentle crown on the flush foredeck is aesthetically pleasing to the eye, and increases the headroom in the forward stateroom. A newly designed engine room vent fascia with longitudinal fins give the boat the illusion of speed even at rest, while keeping the machinery space dry and supplying a rush of combustion air.

Walking into the salon is a delight to the senses and your first impression will be that you are aboard a much larger yacht. With nearly 19 feet of beam, the expanse resembles a stately great room, lush with individually chosen planks of random, natural teak each one featuring a tight, fine grain that defines the area with sense of richness and custom appointments. A home theater system includes a 46-inch flat screen television, which rises from the teak cabinetry and an audiophile Bose system. The serving island, a Viking innovation, is topped with custom granite, as are all of

the counters in the L-shaped galley. The island is ideal for prepping meals at the dock or under way, and allows more freedom of movement throughout the area with two egress points. Drawer-style under counter refrigeration and world class appliances will bring smiles to even the most demanding chefs.

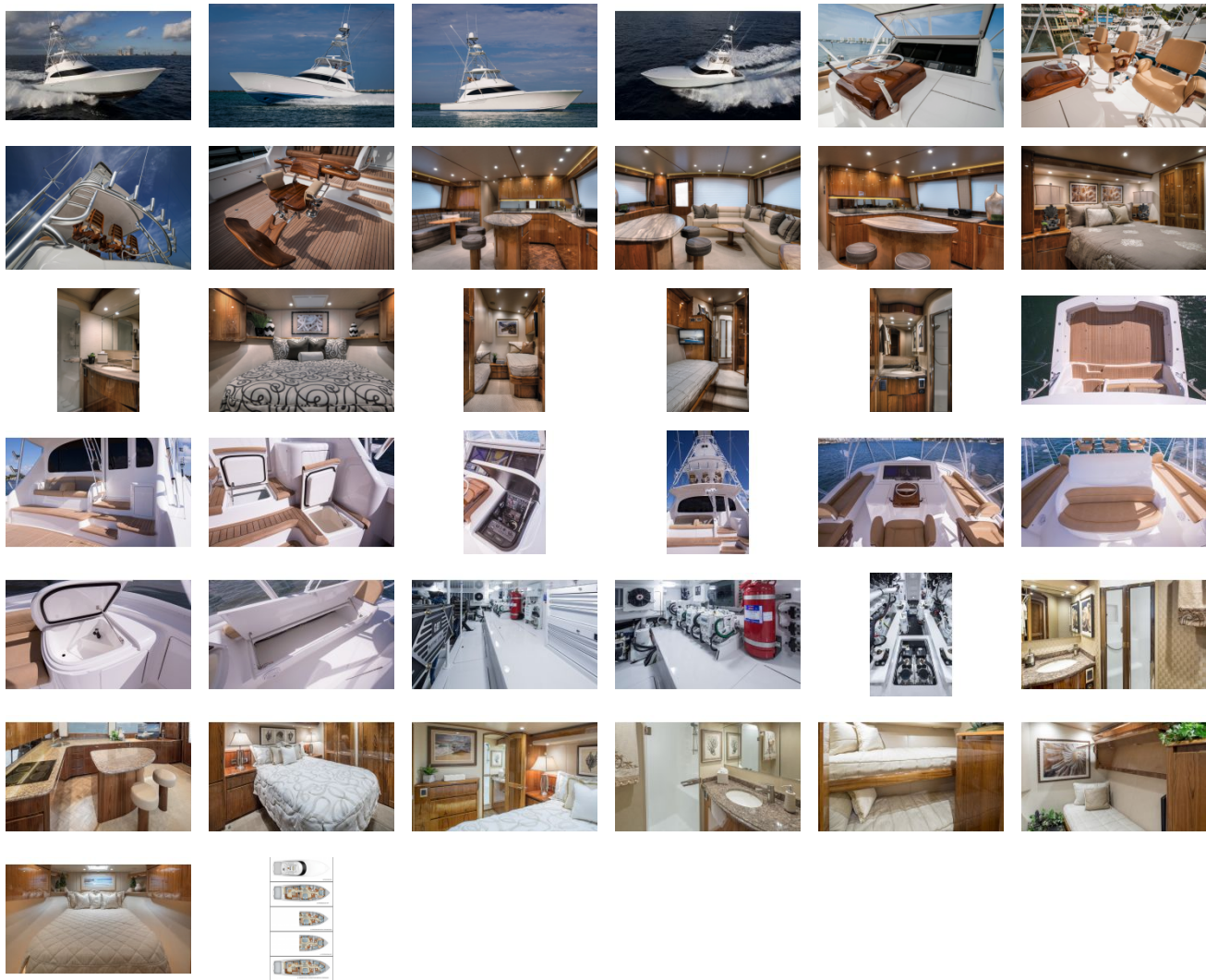
A choice of three or four staterooms is available. In the three-stateroom plan, each one has a private head and fiberglass shower stall. In the four-stateroom layout, the two port staterooms share the port head. While all of the staterooms offer generous accommodations, including System #1 innerspring mattresses, excellent stowage and privacy, each has its own special take and is uniquely designed to maximize comfort and function. The forward stateroom offers a choice of a VIP layout with a queen size walk around berth, or crossover berths. The port stateroom has side-by-side berths and the fourth stateroom features upper and lower berths. The master stateroom is amidships with an athwart ships queen-size walk around bed, an upholstered headboard, flanking night tables, a credenza, a 32-inch flat screen television, and a pair of floor to ceiling maple-lined hanging lockers.

The flying bridge mirrors other new generation Vikings with a center console helm station, three Murray Products pedestal seats with ladder backs, port, starboard and forward lounge seating with stowage beneath each one, a freezer and a chill box for drinks. The 62 Enclosed Bridge features our signature spiral staircase from the salon to the bridge, along with a docking station on the aft deck. To accommodate the staircase in the salon the 62 Enclosed Bridge will utilize a U-shape peninsula galley similarly equipped as in the open bridge version.

The bi-level 172 square-foot cockpit is the result of thousands of hours on the tournament trail. On the upper level, another Viking innovation, the observation mezzanine is designed to keep guests cool and dry thanks to the flying bridge overhang, as well as clear of the crew working in the lower cockpit. Lifting the hinged seat lids beneath the Sunbrella cushions exposes a freezer, and engine room access. A lower level compartment stows bulky gear, while tackle drawers are built into a molded console to starboard. A refrigerated drink box doubles as the salon entrance step. The lower level cockpit is professionally equipped with flush rod holders, fresh and raw-water wash down systems, a transom fish box, rounded comings with indirect rope lighting below, side lockers for tag stick and gaff stowage, a quick disconnect fitting for oil changes for the engines, transmissions and generator, port and starboard in-deck insulated fish and stowage boxes, and stereo speakers to name just a handful of the standard features. The lazarette also has been prepped for the installation of a Seakeeper gyro stabilizer at the factory or a later date.

Mechanically, the engine room is engineered for life at the 1,000 fathom line. Engine instrumentation is located at the entrance door. Bilge areas are painted with bright white Awlgrip for ease of maintenance. A Delta-T ventilation system provides clean, dry air for combustion, while suppressing water intrusion. A centralized sea-water system with a variable speed pump provides ample flow to multiple outlets for onboard needs including watermakers, icemakers, air conditioning, live wells and washdown system. A 27.5 kW Onan generator is standard and space is provided for a 21.5 kW Onan as a backup if desired. Climate control needs are met with a 58,000 Btu direct expansion and zoned air conditioning system. For turnkey delivery, we encourage you to enlist the services and products of our sister companies, Atlantic Marine Electronics and Palm Beach Towers for custom accessories.

GALLERY



**Jefferson Beach Yacht Sales**  
24400 Jefferson Avenue,  
St. Clair Shores, MI 48080  
Phone: 866-490-5297