



Jefferson Beach Yacht Sales
24400 Jefferson Avenue,
St. Clair Shores, MI 48080
Phone: 866-490-5297

Viking 82 Open Bridge Convertible

Boat Type: Convertible Boat



OVERVIEW

The Amazing 82 Convertible

The Viking 82 Convertible represents another ground breaking design that only Viking can produce thanks to our in-house design team. Add this invaluable expertise to the thousands of hours racked up by our tournament winning demo program, which helps to dial in the features and performance required to make this yacht a winner. And finally, factor in the skills of Viking's yacht builders that constantly seek ways to build a better boat every day and ladies and gentlemen you have one simply incredible sportfishing yacht.

With its Palm Beach Towers custom tuna tower and magnificent Atlantic Marine Electronics package, the Viking 82 Convertible is fully outfitted for tournament fishing and long range cruising.

SPECIFICATIONS

Basic Information

Manufacturer:	Viking	Boat Type:	Convertible Boat
Model:	82 Open Bridge Convertible	Hull Material:	Fiberglass
Hull Type:		Category:	Power

Dimensions & Weight

Length:	82.00 ft	Draft - max:	5 ft 6 in - 1.68 meter
LOA:	83 ft 5 in - 25.43 meter	Bridge Clearance:	-
Beam:	22 ft 4 in - 6.81 meter	Dry Weight:	162250 ft
Deadrise Aft:	-		

Tank Capacities

Fuel Tank:	3395 gallons - 1 tank(s)	Holding Tank:	-
Fresh Water Tank:	450 gallons - 1 tank(s)		

Accommodations

Total Cabins:	5	Crew Cabins:	-
Total Berths:	-	Crew Berths:	-
Total Sleeps:	-	Crew Sleeps:	-
Total Heads:	6	Crew Heads:	-
Captains Cabin:	No		

FEATURES

The profile of the Viking 82 is as recognizable at the dock of a yacht club banquet as it is on the 1,000 fathom line. The aggressively raked stem, the gorgeous sheer and the symphony of soft, seamless curves are a true feast for the eyes. But the subtleties are abundant and equally exquisite. The foredeck, for example, is flush with a gentle crown, which quietly hints at the substantial headroom below in each of the four staterooms. Freeboard forward is nearly nine feet, yet a modest three feet in the cockpit, which makes it safe and effortless for the crew to release billfish unharmed. With a maximum beam of 22 feet, a lesser design would look chunky and clunky, but the Viking 82 wears its measurements like a runway model. This is one stunningly beautiful yacht.

The substantial beam allows a salon of epic proportions with hand-finished teak joinery throughout. Entered through an electric sliding door, the L-shaped sofa with stowage below provides an excellent vantage to relax and enjoy the entertainment on the screen of the 50-inch plasma television, which rises from cabinetry on the starboard side. A dinette to port and bar stools at the granite topped galley counter to starboard create a relaxing and practical environment for formal dining, as well as grabbing snacks between marlin strikes. The galley is motoryacht class with gourmet appliances and stowage capabilities to cruise for weeks on end.

A companionway to port leads to four staterooms, plus private crew quarters for two, which also includes a head with shower and access to the engineroom and cockpit.

In the master suite located amidships for maximum comfort and privacy, there is a king-size bed with stowage

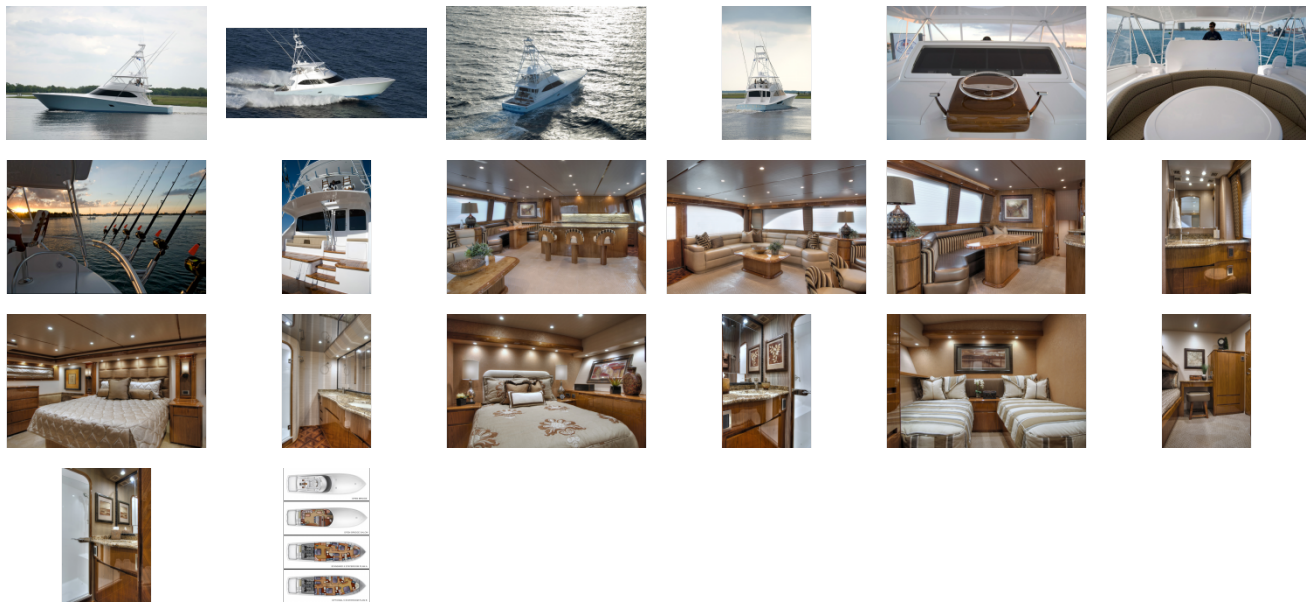
below, a settee, a dressing table, an entertainment system, a chest of drawers and an oversized fiberglass shower stall in the head. An offset companionway leads to three additional staterooms, each with a private head and shower. Due to the generously sized staterooms, there is flexibility in the sleeping accommodations with both queen and double berth arrangements.

With more than enough tournament trophies to stock a hardware store, the Viking 74 proved beyond any doubt that it could out dance a billfish with pomp and circumstance to spare. And you will find these same elements in the cockpit of the 82 Convertible. Boasting 255 square feet of working space, the cockpit features our signature mezzanine deck beneath the flying bridge overhang for protection against sun and spray. Misters are available to counter tropical heat naturally. It also features built-in under-mount freezers, tackle and gear stowage, along with engineroom access. Insulated fiberglass bait wells, fish wells, and stowage wells, all with stainless-steel gas strut supports, are deep and spacious and a transom well can be set up as another live well or handy fish baling box. A walk-through transom door, port and starboard Glendinning Cablemasters, fresh and raw-water washdown systems, flush rod holders, stainless-steel hardware, side stowage lockers and a salon step box cooler briefly touch on the extensive list of standard equipment.

The open flying bridge features a center helm console with power assisted hydraulic steering and electronic engine controls with trolling valves. Electronics stow neatly beneath clear acrylic panels for all-weather use and dual radio boxes provide additional room. Port and starboard bench seats conceal rod stowage below and built-in freezer and refrigeration space is standard ahead of the helm station. Three Murray Products helm seats with teak ladder backs and stainless-steel hardware and pedestals provide comfort and superb visibility.

An air conditioned enclosed bridge is also available featuring a center helm seat forward flanked by twin leather upholstered companion seats, a raised settee and teak table, wet bar with refrigerator and entertainment system. Access to the bridge is via the cockpit ladder or a spiral staircase from the salon. A control station on the aft deck eases maneuverability backing into a slip or working a fish near the boat.

GALLERY



Jefferson Beach Yacht Sales
24400 Jefferson Avenue,
St. Clair Shores, MI 48080
Phone: 866-490-5297