



Jefferson Beach Yacht Sales
24400 Jefferson Avenue,
St. Clair Shores, MI 48080
Phone: 866-490-5297

Viking 92C

Boat Type: Convertible Boat



OVERVIEW

Viking 92 Convertible

Not so long ago, many experienced tournament skippers and anglers felt a boat over 70 feet was on the cusp of being too large to effectively compete on the tournament trail. But the Viking 74 Convertible launched in May 2004 proved differently. Fast forward to the fall 2008 when the launch of our 82 Convertible continued the upward trend demonstrating beyond any doubt that Viking hit another grand slam with its then new flagship. Now we behold another amazing achievement, the Viking 92 Convertible, we continue to lead the industry with new product and unrivaled innovation with the Viking 92 Convertible, available in Open Bridge and Enclosed Bridge configurations.

SPECIFICATIONS

Basic Information

Manufacturer:	Viking	Boat Type:	Convertible Boat
Model:	92C	Hull Material:	Fiberglass
Hull Type:		Category:	Power

Dimensions & Weight

Length:	92.00 ft	Draft - max:	5 ft 11 in - 1.8 meter
LOA:	93 ft 3 in - 28.42 meter	Bridge Clearance:	24 ft 6 in - 7.47 meter
Beam:	24 ft 1 in - 7.34 meter	Dry Weight:	205000 ft
Deadrise Aft:	12.00 °		

Tank Capacities

Fuel Tank:	4015 gallons - 1 tank(s)	Holding Tank:	330 gallons - 1 tank(s)
Fresh Water Tank:	485 gallons - 1 tank(s)		

Accommodations

Total Cabins:	5	Crew Cabins:	1
Total Berths:	-	Crew Berths:	-
Total Sleeps:	-	Crew Sleeps:	-
Total Heads:	7	Crew Heads:	1
Captains Cabin:	No		

FEATURES

This boat has a stunning profile in either version with several motor yacht cues including dual mezzanine decks; one in the cockpit and the second on the main level after deck. The latter mezzanine offers both rear facing lounge seating, along with a second seating area and a table for al fresco dining. An outside galley and grilling area are included for added convenience and ambiance.

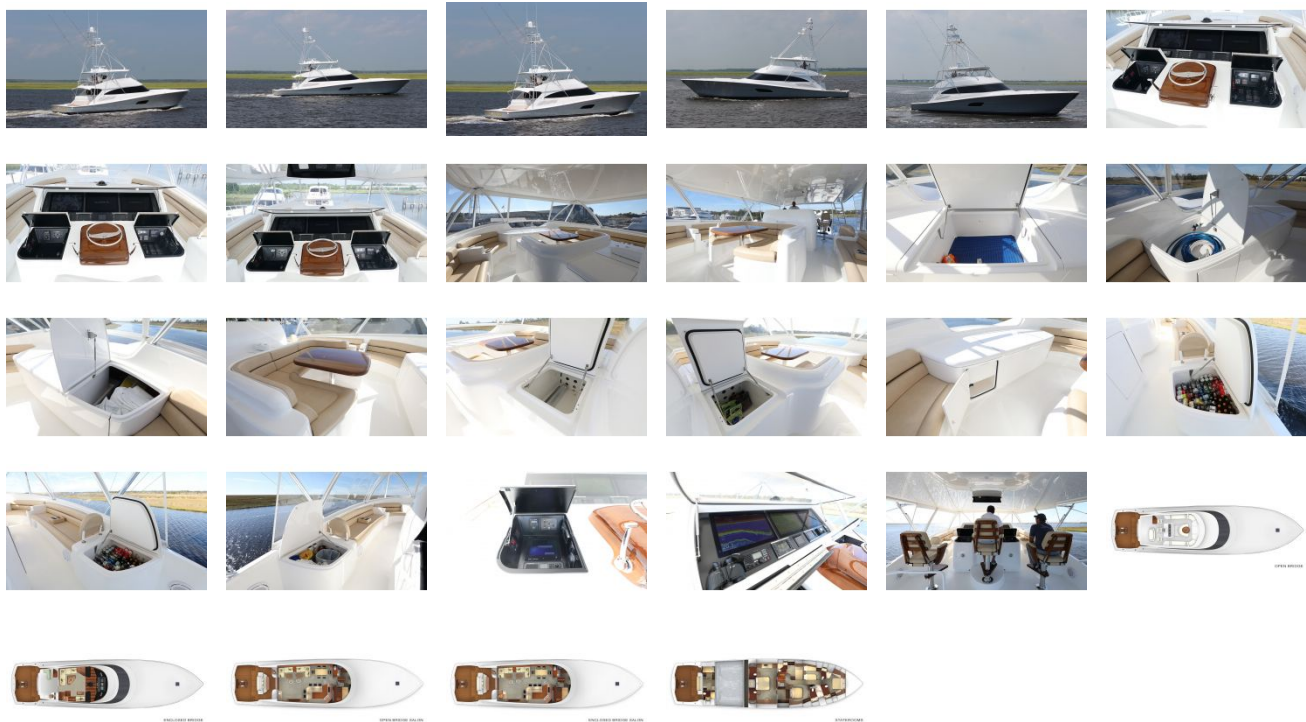
The yacht's interior is a showpiece of elegance and luxury. The 23-foot beam not only opens the salon but transforms it into a majestic living room with built-in furniture and plush appointments like a 60-inch flat screen television that rises on a lift out of the teak cabinetry. An L-shape island in the galley complements the work area and all countertops feature custom selected granite. A pair of walk-in pantries and a full day head are forward and characterize an excellent use of space. Nearby, a formal dining area accommodates eight guests.

The 92 Convertible has six staterooms, each with its own private head and shower. The full beam master suite features a king size walk around bed, a walk-in closet, a dressing table, and his and her private facilities. Crew quarters are aft with access from the cockpit. The full beam area includes a head with a shower, a small galley area, and upper and lower berths in a private cabin.

Propulsion choices include offerings by Caterpillar and MTU. The communication, navigation and entertainment electronic package will be designed and installed by Viking sister company, Atlantic Marine Electronics. The first Open Bridge boat will have a tuna tower designed and fabricated by Palm Beach Towers, another Viking subsidiary. Selecting our subsidiaries for standard and optional accessories allows us to deliver the 92 Convertible turnkey

ready.

GALLERY



Jefferson Beach Yacht Sales
24400 Jefferson Avenue,
St. Clair Shores, MI 48080
Phone: 866-490-5297