



Jefferson Beach Yacht Sales
24400 Jefferson Avenue,
St. Clair Shores, MI 48080
Phone: 866-490-5297

Viking 44O

Boat Type: Sport Cruiser



OVERVIEW

44 Open

Express Success

The Viking Yacht Company has once again demonstrated why it's the world leader in the design and construction of open express boats. With the new 44 Open, the New Jersey powerhouse delivers a fishing-and-cruising gem that has the soft, stable performance and interior comfort and accommodations of a much larger boat.

"The boat rides in the class of a 50-foot boat," says Viking President and CEO Pat Healey. "The bottom of the boat has been designed to funnel the water aft of the helm position for a very dry ride, which is critical in an open boat."

Our new 44 Open not only appeals to families ready to take the next step into the Viking lifestyle, it's also a logical choice for owners of outboard-powered center console boats looking for more comfort, conveniences and weather protection. Because of its efficient use of space and larger-boat amenities, the 44 O also gives seasoned owners who are looking to downsize the opportunity to continue experiencing Viking quality and performance.

SPECIFICATIONS

Basic Information

| | | | |
|---------------|--------|----------------|---------------|
| Manufacturer: | Viking | Boat Type: | Sport Cruiser |
| Model: | 44O | Hull Material: | Fiberglass |
| Hull Type: | | Category: | Power |

Dimensions & Weight

| | | | |
|---------------|--------------------------|-------------------|-------------------------|
| Length: | 44.00 ft | Draft - max: | 3 ft 10 in - 1.17 meter |
| LOA: | 45 ft 1 in - 13.74 meter | Bridge Clearance: | - |
| Beam: | 16 ft 4 in - 4.98 meter | Dry Weight: | 49500 ft |
| Deadrise Aft: | - | | |

Tank Capacities

| | | | |
|-------------------|-------------------------|---------------|---|
| Fuel Tank: | 845 gallons - 1 tank(s) | Holding Tank: | - |
| Fresh Water Tank: | 120 gallons - 1 tank(s) | | |

Accommodations

| | | | |
|-----------------|----|--------------|---|
| Total Cabins: | 3 | Crew Cabins: | - |
| Total Berths: | - | Crew Berths: | - |
| Total Sleeps: | - | Crew Sleeps: | - |
| Total Heads: | 2 | Crew Heads: | - |
| Captains Cabin: | No | | |

FEATURES

Command Deck

The command deck shares many of the practical and notable aspects of its larger siblings, including our signature and tournament-proven centerline forward helm station on a raised platform for enhanced visibility.

The beautifully finished fiberglass windshield frame's mullions are strategically placed for a gin-clear view forward. The console holds a bank of electronics displays, and has space for engine instrumentation and other accessories. Recessed compartments accommodate radios and additional equipment, plus accessory switches and controls.

The Costa Clear enclosure and optional air conditioning will keep you comfortable on the spacious command deck that includes three adjustable pedestal seats. A table accompanies a four-person L-shaped lounge outfitted with comfortable padded seating. The port console holds refrigeration and stowage that includes tackle drawers. Like all Vikings, the 44 Open can be appointed with custom Atlantic Marine Electronics' packages for navigation, communication and entertainment accessories, and using this Viking subsidiary allows the yacht to be delivered turnkey ready.

Outfitted with a custom designed and built Palm Beach Towers' tuna tower, another of Viking's experienced subsidiaries, the 44 Open comes ready to fish with a second complete helm with additional electronics, a fiberglass buggy top and Rupp outriggers.

Accommodations

A sliding companionway door and a large set of stairs with a starboard-side vertical handrail lead to the climate-controlled salon. With its 16 ft. 4 in. beam, the widest of any boat in this class, the salon is a spacious social area for relaxing and entertaining. The starboard-side galley, which sits opposite an L-shaped lounge with a dinette table, includes teak cabinetry with meticulous joinery and fit and finish, expansive Corian countertops, an electric range, separate under-counter refrigerator and freezer units and a microwave/convection oven. Other notable amenities include a stereo system with a 24-inch flat screen HD TV.

In the forward master stateroom, the island queen bed with mattress has a lift-up top with gas pistons and maple-lined storage underneath. There's also a maple-lined hanging locker. Air conditioning, a 19-inch flat screen television and access to the head and shower round out the standard amenities.

The head has custom Amtico flooring, a one-piece molded Corian countertop with rounded edges and a sink with a satin nickel faucet. With its two-person berth, the aft guest stateroom can accommodate another couple and makes for a nice hideaway for the kids.

Cockpit/Engineroom

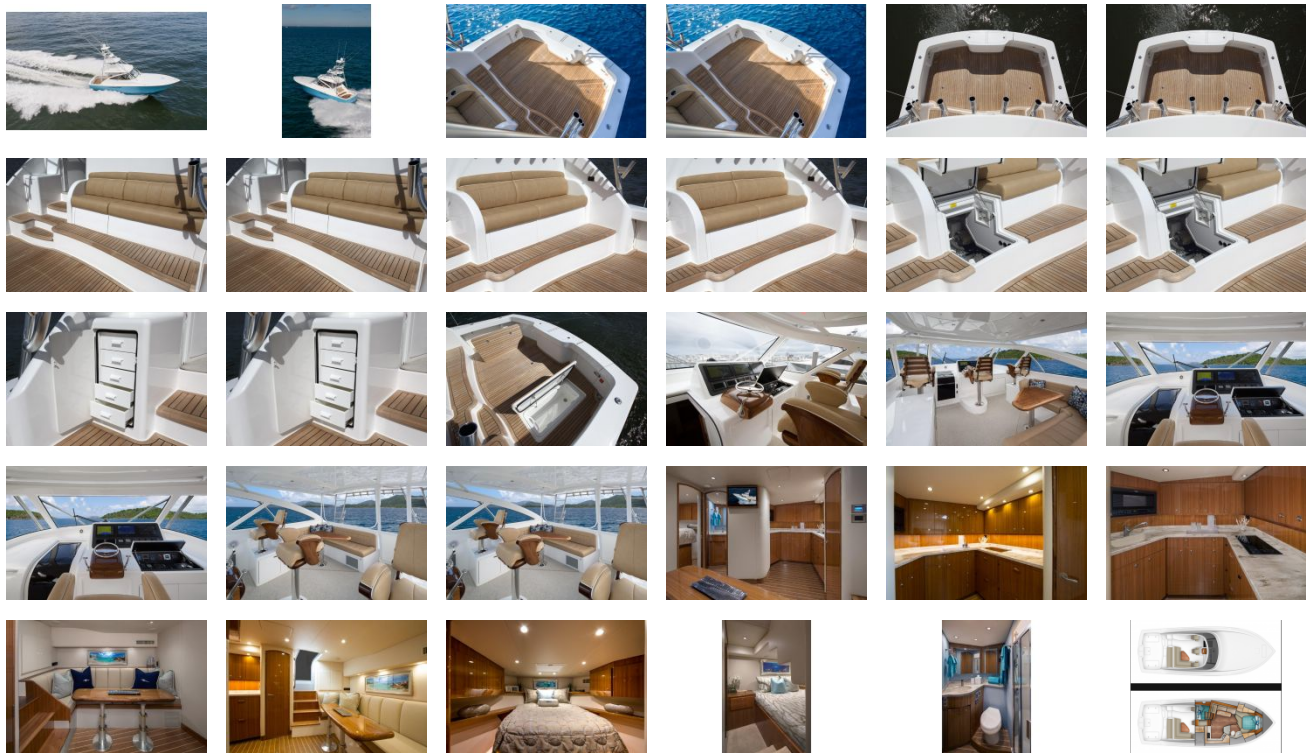
We have engineered the 44 Open for the installation of a Seakeeper gyro stabilizer, which brings great stability to the vessel to increase overall comfort. Just steps away from the command deck, the 119-square-foot cockpit is tournament-ready with flush rod holders, a transom live well, and a transom door with a lift gate, tackle stowage, step-box coolers and in-deck fish and stowage wells. Guests can take in the fishing action from the observation mezzanine's aft-facing lounge seating (which has freezer storage underneath).

With her raked bow, swept-back wraparound windshield and gently sloping sheer, the 44 Open presents a picture of strength and style. The running surface is equally adept with a 14.3-degree transom deadrise and a design that delivers lateral response for the utmost confidence in a seaway.

With twin MAN 800-hp diesels, the 44 Open will cruise at 30 knots with a top end around 34.5 knots depending upon load, sea conditions, and other environmental factors. The engineroom, lazarette, forward bilge and anchor locker are all painted with Snow White Awlgrip for maximum visibility and easier maintenance. A Delta-T engineroom ventilation system, an oil exchange system and an Onan 13.5 kW E-QD (electronic quiet diesel) Series generator are just some of the standard mechanical and electrical equipment.

Bottom line: The 44 Open excels as both a hardcore sportfishing boat and a comfortable cruising yacht, delivering the fishability, accommodations, comfort and performance that you demand on the water.

GALLERY



Jefferson Beach Yacht Sales
24400 Jefferson Avenue,
St. Clair Shores, MI 48080
Phone: 866-490-5297