



Jefferson Beach Yacht Sales
24400 Jefferson Avenue,
St. Clair Shores, MI 48080
Phone: 866-490-5297

Viking 46 Open

Boat Type: Sport Fishing



OVERVIEW

Make Way for the Viking 46 Open

The Viking 46 Open is one more example of Viking's dominance in building high performance luxury yachts by delivering outstanding quality, value and versatility. Designed for both fishing and cruising, the 46 Open is bursting with blue-water capabilities and yacht club panache.

As with all Vikings, the 46 Open can be ordered with navigation, communication and entertainment systems provided by Atlantic Marine Electronics. Similarly, a tuna tower, drop-down electronics boxes and teaser reel compartments can be ordered through Palm Beach Towers. Both AME and PBT are Viking sister companies and their services allow the Viking 46 Open to be delivered turnkey ready.

In addition, Viking offers its owners the exclusive use of the Viking Service Center and the Viking International Yacht Center, Riviera Beach, Florida. The Viking Yacht Company is the only boat manufacturer offering a factory trained staff at satellite locations for the convenience of its owners.

Family owned and operated, Viking is unique in the marine industry. Vertically integrated, virtually 90 percent of a Viking is manufactured in house. Viking even designs and builds its own molds using state-of-the-art five-axis profiler milling machines. Debt free, we answer only to ourselves and are able to deliver what is arguably the best riding, best performing convertible yachts in the world.

We cordially invite you to contact your Viking dealer for more information on the 46 Open, and to arrange a tour of our 862,000 square feet manufacturing facility on the Bass River in New Gretna, New Jersey, just 30 minutes north of Atlantic City.

SPECIFICATIONS

Basic Information

Manufacturer:	Viking	Boat Type:	Sport Fishing
Model:	46 Open	Hull Material:	Fiberglass
Hull Type:		Category:	Power

Dimensions & Weight

Length:	46.00 ft	Draft - max:	4 ft 4 in - 1.32 meter
LOA:	46 ft 11 in - 14.3 meter	Bridge Clearance:	-
Beam:	16 ft 6 in - 5.03 meter	Dry Weight:	52670 ft
Deadrise Aft:	-		

Tank Capacities

Fuel Tank:	870 gallons - 1 tank(s)	Holding Tank:	-
Fresh Water Tank:	150 gallons - 1 tank(s)		

Accommodations

Total Cabins:	1	Crew Cabins:	-
Total Berths:	-	Crew Berths:	-
Total Sleeps:	-	Crew Sleeps:	-
Total Heads:	1	Crew Heads:	-
Captains Cabin:	No		

FEATURES

Tournament as well as casual fishermen will appreciate the attention to detail in the 121 square foot cockpit garnered from the thousands of hours Viking puts into competitive fishing every year. The cockpit features a molded non-skid deck for secure footing, a laminated mounting plate in the deck for a fighting chair, a rocket launcher and table, thirsty scuppers, a walk-through transom door with lift gate and locking latches on the deck hatches, which use stainless-steel gas springs. Insulated recessed in-deck boxes accommodate the catch of the day and clean up fast with a powerful pump out system. The boxes can be configured in a variety of ways and also be used for gear stowage, ice chipper output or plumbed for an available live well. As you expect from Viking, nothing is left to chance so the cockpit is well appointed with amenities such as flush rod holders, recessed hardware, fresh and raw-water

washdown systems, tackle stowage, rounded coamings and more.

The observation mezzanine in the upper cockpit is accented with inviting Sunbrella cushions, and houses a bait freezer, stowage compartment and engineroom access. A step leading to the bridge deck doubles as an insulated drink box.

The airy command bridge deck is framed front and sides with a wraparound windshield, equipped with wipers, washers and an integrated enclosure track. Three Murray Product adjustable helm seats afford ideal sight lines and the centerline helm is equipped with power assisted hydraulic steering and electronic engine controls. Recessed electronic boxes with clear acrylic fronts protect the equipment from the elements and remain viewable in any weather for safety and security. In addition, two radio boxes flank the helm and provide a convenient location for accessory controls and switches. Aft the command area, there is an L-shaped lounge to port with rod stowage below and a molded console to starboard with stowage and a refrigerator/icemaker.

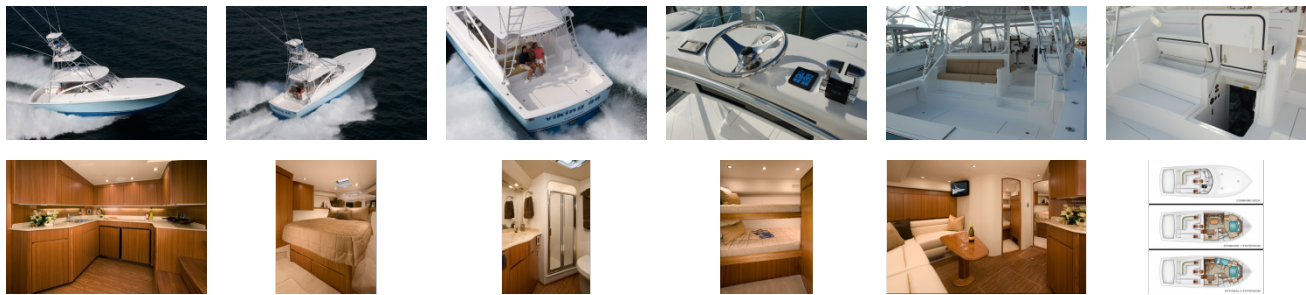
A sliding contoured door leads below to the salon, galley and overnight accommodations. A choice of one or two staterooms creates great flexibility. The master stateroom is forward in both plans and provides a double island berth with stowage below, a maple-lined hanging locker, air conditioning, reading lights and a 19-inch flat screen television. The galley features a three-burner electric cooktop, microwave/convection oven, large capacity drawer style refrigeration, Corian counters and sink with built-in garbage disposal, and Amtico vinyl flooring. A choice of high gloss or satin teak finishes is offered.

Opposite the galley, the salon is fully air conditioned and has an L-shaped lounge with rod stowage underneath. Teak cabinetry, a 22-inch flat screen television, a stereo, carpeting and a teak high-low cocktail table are among the standard items.

In the alternate layout, the salon is slightly shortened to allow for the second stateroom with upper and lower berths. Both layouts include a single head, which is nicely appointed with Amtico flooring, a fiberglass shower stall, a one-piece molded Corian counter with a built-in sink, electric MSD, linen locker and air conditioning.

In the engineroom, Viking's engineering benchmarks are industry famous. Engine choices include the standard 900 mhp V8 MANs or 1,100 mhp V10 MANs. The common rail diesels are mounted to powder-coated structural steel web frame beds that are secured to intermediate vacuum bagged composite bulkheads, which ensure drive train alignment for silky smooth trolling and minimal vibration. A 17.5 kW Onan generator supplies electrical power underway and a voltage stabilizer isolation transformer delivers clean dockside power. For clean, dry engine combustion air, there is a Delta T ventilation system with supply and discharge fans for proper fresh air supply and water intrusion suppression. The engineroom is painted in bright white Awlgrip for easier maintenance and all daily engine fluid checks are inboard for accessibility. A variety of options, including a tuna tower, outriggers, and a fiberglass swim platform allows infinite customization possibilities.

GALLERY



Jefferson Beach Yacht Sales
24400 Jefferson Avenue,
St. Clair Shores, MI 48080
Phone: 866-490-5297