



GSPS Marine
3807 Gulf Shores Parkway,
Gulf Shores, AL, 36542
Phone: 251-948-6748

Parker 2501 CC

Boat Type: Center Console



OVERVIEW

The moment you step aboard the sporty and refined center console models, the best experiences in life begin to take shape. Parker's Deep-V (CC) center consoles, with its sharp entry and wide beam, are ready to handle the sporty and extreme offshore conditions with ease. From sunrise to sunset, you can choose from the many scenic routes the coastal waters have to offer.

SPECIFICATIONS

Basic Information

Manufacturer:	Parker	Boat Type:	Center Console
Model:	2501 CC	Hull Material:	
Year:	2018	Hull Type:	Deep Vee
Category:	Power		

Dimensions & Weight

Length:	25.00 ft	Draft - max:	1 ft 5 in - 0.43 meter
LOA:	30 ft 4 in - 9.24 meter	Bridge Clearance:	-
Beam:	9 ft 6 in - 2.9 meter	Dry Weight:	4500 ft
Deadrise Aft:	21.00 °		

Tank Capacities

Fuel Tank:	156 gallons - 1 tank(s)	Holding Tank:	-
Fresh Water Tank:	-		

Accommodations

Total Cabins:	-	Crew Cabins:	-
Total Berths:	-	Crew Berths:	-
Total Sleeps:	-	Crew Sleeps:	-
Total Heads:	-	Crew Heads:	-
Captains Cabin:	No		

FEATURES

STANDARD EQUIPMENT

Large Sportfishing Console: Windshield; 8" stainless steel grabrail on console large fascia (14"high, 36"wide) for recessed electronics; fwd facing cushioned seat; **NEW** lighted cupholders (2); recessed footrest and storage compartment on aft face; lockable door for access to head (porta-potti); 65 1/2" headroom; overhead lighting; opening portlight w/screen

Compass

NEW Horn

NEW Leaning Post w/Rocket Launchers on Above Deck Livewell (30 gals)

Raw Water Washdown

Stainless Steel Pull Up Deck Hardware [(1 ea) Bow, (2 ea) Spring & Stern]

Stainless Steel Rodholders (2 Pair)

Combination Rodholder/Cup Holder (1 Pair)

NEW Anchor Locker On Foredeck

Hydraulic Steering w/Stainless Steel Wheel

NEW Acrylic Accessory Panel Panel w/12v Outlet & USB

Trim Tabs w/Instant Retract

NEW Combination LED Low Profile Navigation Lights (International Rules)

Cockpit Lighting

Bilge Pump w/Float Switch

NEW Stereo w/Speakers (4 Each)

Rod Storage & Toe Rails Under Gunwale (4 Rods)

Full Transom w/NEW Bracket (Swim Platform & Ladder), Insulated Fishbox, Livewell And Transom Door With Access To Swim Platform

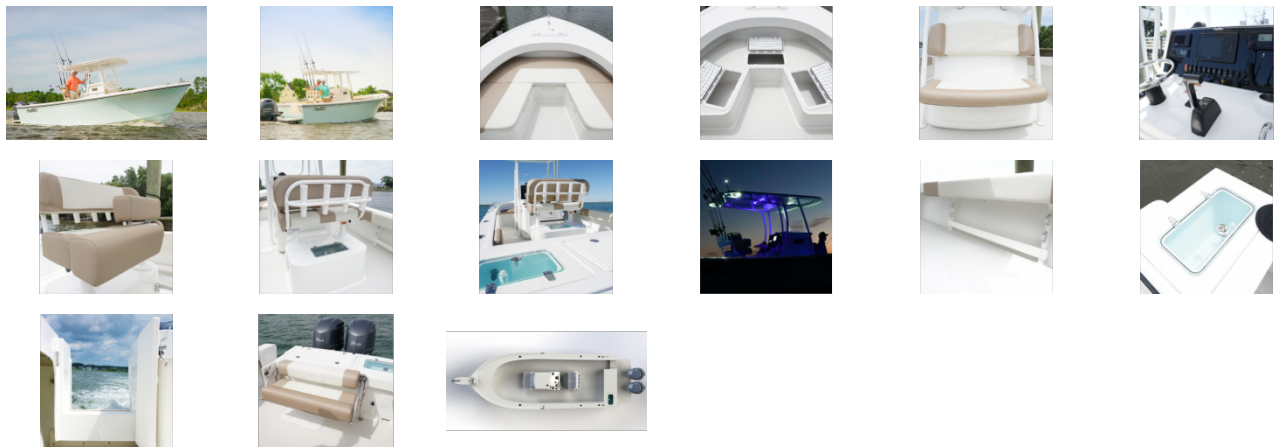
Self-Bailing Cockpit w/Contrasting Non-Skid Surface

Hull & Deck Joint Thru-Bolted (S/S Fasteners)
Heavy Duty Sport Rub Rail w/Stainless Steel Insert
Flotation Foam
10 Year Limited Hull Warranty

OPTIONAL EQUIPMENT

S/S Bow Rail: Two-Piece, Low Style
Pulpit w/Roller (Deletes Pull Up Bow Cleats)
One-Piece Bow Rail For Pulpit
Anchor Windlass (w/300' Line)
Position Indicators For Trim Tabs
Vee Seats w/Storage Cushions & Grabrails For Vee Seats
Forward Platform w/Recessed Cooler & Cushion
Portable Head w/Dockside Pump-Out
NEW Fresh Water Shower in Console
Powder Coated Leaning Post w/ Rocket Launcher & Backrest For Above Deck Livewell
Folding Footrest For Above Deck Livewell
NEW Fiberglass Hard Top
Includes: Electronics Box w Fwd Integrated LED Spreader, LED Spreader Aft, Speaker Pods Aft, Courtesy Lighting, Powder Coated Frame /Mounted Rodholders, Mast Light
NEW Fiberglass Hard-Top Underside Color (TO MATCH HULL SIDE COLOR)
NEW Fusion Stereo Upgrade for Fiberglass Hard Top
NEW Enclosure for Fiberglass Hardtop
Aluminum T-Top w/(Canvas, Soft Top) & Rocket Launcher (6 Rod)
Enclosures (Canvas, 3 Sided)
Wings For Enclosure
L.E.D. Spreader Light (Each)
Electronics Box For T-Top
Console Windshield Grabrail (NA with T-top)
Cockpit Coaming Pads
Folding Cockpit Lounge Seat
Hull Color: (Ice Blue, Abaco Green, Gunmetal Gray, Sandy Tan, or Horizon Blue)
Underwater Lights (Blue L.E.D.)
Shrinkwrap Cover
Garmin Electronics Packages (VHF Antenna Not Included)
GPS MAP 1042 XSV & B60 TH W/ VHF 110
GPS MAP 7610 XSV & B60 TH W/ VHF 110
GPS MAP 7612 XSV & B60TH W/ VHF 110

GALLERY



GSPS Marine
3807 Gulf Shores Parkway,
Gulf Shores, AL, 36542
Phone: 251-948-6748