



GSPS Marine
3807 Gulf Shores Parkway,
Gulf Shores, AL, 36542
Phone: 251-948-6748

Parker 2801 CC

Boat Type: Center Console



OVERVIEW

The moment you step aboard the sporty and refined center console models, the best experiences in life begin to take shape. Parker's Deep-V (CC) center consoles, with its sharp entry and wide beam, are ready to handle the sporty and extreme offshore conditions with ease. From sunrise to sunset, you can choose from the many scenic routes the coastal waters have to offer.

SPECIFICATIONS

Basic Information

Manufacturer:	Parker	Boat Type:	Center Console
Model:	2801 CC	Hull Material:	
Year:	2018	Hull Type:	Deep Vee
Category:	Power		

Dimensions & Weight

Length:	28.00 ft	Draft - max:	1 ft 5 in - 0.43 meter
LOA:	33 ft - 10.06 meter	Bridge Clearance:	-
Beam:	9 ft 6 in - 2.9 meter	Dry Weight:	5000 ft
Deadrise Aft:	21.00 °		

Tank Capacities

Fuel Tank:	232 gallons - 1 tank(s)	Holding Tank:	-
Fresh Water Tank:	-		

Accommodations

Total Cabins:	-	Crew Cabins:	-
Total Berths:	-	Crew Berths:	-
Total Sleeps:	-	Crew Sleeps:	-
Total Heads:	-	Crew Heads:	-
Captains Cabin:	No		

FEATURES

STANDARD EQUIPMENT

Large Sportfishing Console: Windshield; 8" stainless steel grab rail on console; large fascia (14"high, 36"wide) for recessed electronics; fwd. facing cushioned seat; **NEW** lighted cup holders (2); recessed footrest and a storage compartment on aft face; a lockable door for access to head (porta-potty); 65 1/2" headroom; overhead lighting; opening port light w/screen

Compass

NEW Horn

NEW Leaning Post w/Rocket Launchers On Above Deck Livewell (30 gals)

Raw Water Washdown

Stainless Steel Pull Up Deck Hardware [(1 ea) Bow, (2 ea) Spring & Stern]

Combination Rodholder/Cup Holder (1 Pair)

NEW Anchor Locker On Foredeck

Hydraulic Steering w/Stainless Steel Wheel

NEW Acrylic Accessory Panel With 12v Outlet & USB

Trim Tabs w/Instant Retract

Cockpit Lighting

Bilge Pump w/Float Switch

NEW Stereo w/Speakers (4 Each)

Rod Storage & Toe Rails Under Gunwale (4 Rods)

Full Transom w/NEW Bracket (With Swim Platform & Ladder), Insulated Fishbox, Livewell And Transom Door With Access To Swim Platform

Self-Bailing Cockpit w/Contrasting Non-Skid Surface

Hull & Deck Joint Thru-Bolted (S/S Fasteners)

Heavy Duty Sport Rub Rail

Flotation Foam

10 Year Limited Hull Warranty

OPTIONAL EQUIPMENT

S/S Bow Rail: Two-Piece, Low Style

Pulpit w/Roller

– One-Piece Bow Rail For Pulpit

– Anchor Windlass (w/300' Line)

Position Indicators For Trim Tabs

Vee Seats w/Storage Cushions & Grabrails

Portable Head w/Dockside Pump-Out

NEW Fresh Water Shower In Console

Powder Coat Upgrade for Leaning Post w/Rocket Launcher & Backrest

Folding Footrest For Above Deck Livewell

NEW Fiberglass Hard Top; Includes: Electronics Box w Fwd Integrated LED Spreader, LED Spreader Aft, Speaker

Pods Aft, Courtesy Lighting, Powder Coated Frame /Mounted Rodholders, Mast Light

NEW Fiberglass Hard-Top Underside Color (TO MATCH HULL SIDE COLOR)

NEW Fusion Stereo Upgrade for Fiberglass Hard Top

NEW Fiberglass Hardtop Enclosure

Aluminum T-Top w/Soft Top, Canvas & Rocket Launcher (6 Rod)

Enclosures (3 Sides)

Wings For Enclosure

L.E.D. Spreader Light (Each)

Electronics Box For T-Top

Console Windshield Grabrail (NA w/ T-Top)

Cockpit Coaming Pads

Folding Cockpit Lounge Seat

Hull Color Option: (Ice Blue, Abaco Green, Gunmetal Gray, Sandy Tan or Horizon Blue)

Underwater Lights (Blue LED)

Shrinkwrap Cover

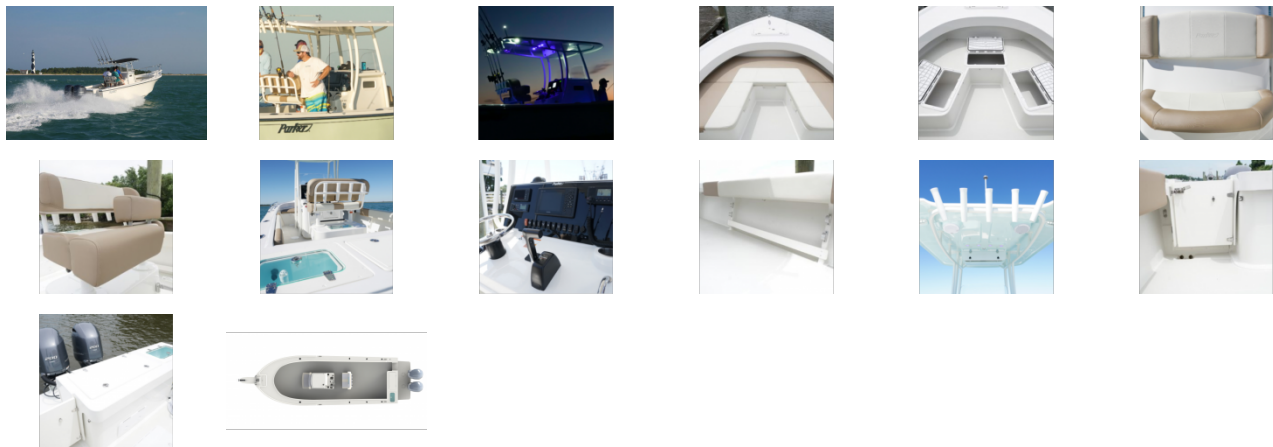
Garmin Electronics Packages (VHF Antenna Not Included)

GPS MAP 1042 XSV & B60 TH W/ VHF 110

GPS MAP 7610 XSV & B60 TH W/ VHF 110

GPS MAP 7612 XSV & B60 TH W/ VHF 110

GALLERY



GSPS Marine
3807 Gulf Shores Parkway,
Gulf Shores, AL, 36542
Phone: 251-948-6748