



**GSPS Marine**  
3807 Gulf Shores Parkway,  
Gulf Shores, AL, 36542  
Phone: 251-948-6748

# Contender 24 S

Boat Type: Sport Fishing



## OVERVIEW

The 24S is a great day tripping boat with plenty of range offered from the 130 gallons of fuel capacity and great fuel economy. **The 24S gets over 2.5 mpg @ 30mph when powered with a single Yamaha F300!**

## SPECIFICATIONS

### Basic Information

|               |           |                |               |
|---------------|-----------|----------------|---------------|
| Manufacturer: | Contender | Boat Type:     | Sport Fishing |
| Model:        | 24 S      | Hull Material: | Fiberglass    |
| Year:         | 2020      | Hull Type:     |               |
| Category:     | Power     |                |               |

## Dimensions & Weight

|               |                         |                   |                        |
|---------------|-------------------------|-------------------|------------------------|
| Length:       | 24.00 ft                | Draft - max:      | 1 ft 6 in - 0.46 meter |
| LOA:          | 24 ft 6 in - 7.47 meter | Bridge Clearance: | -                      |
| Beam:         | 8 ft 6 in - 2.59 meter  | Dry Weight:       | 5250 ft                |
| Deadrise Aft: | 22.00 °                 |                   |                        |

## Tank Capacities

|                   |                         |               |   |
|-------------------|-------------------------|---------------|---|
| Fuel Tank:        | 130 gallons - 1 tank(s) | Holding Tank: | - |
| Fresh Water Tank: | -                       |               |   |

## Accommodations

|                 |    |              |   |
|-----------------|----|--------------|---|
| Total Cabins:   | -  | Crew Cabins: | - |
| Total Berths:   | -  | Crew Berths: | - |
| Total Sleeps:   | -  | Crew Sleeps: | - |
| Total Heads:    | -  | Crew Heads:  | - |
| Captains Cabin: | No |              |   |

## FEATURES

### Standard features:

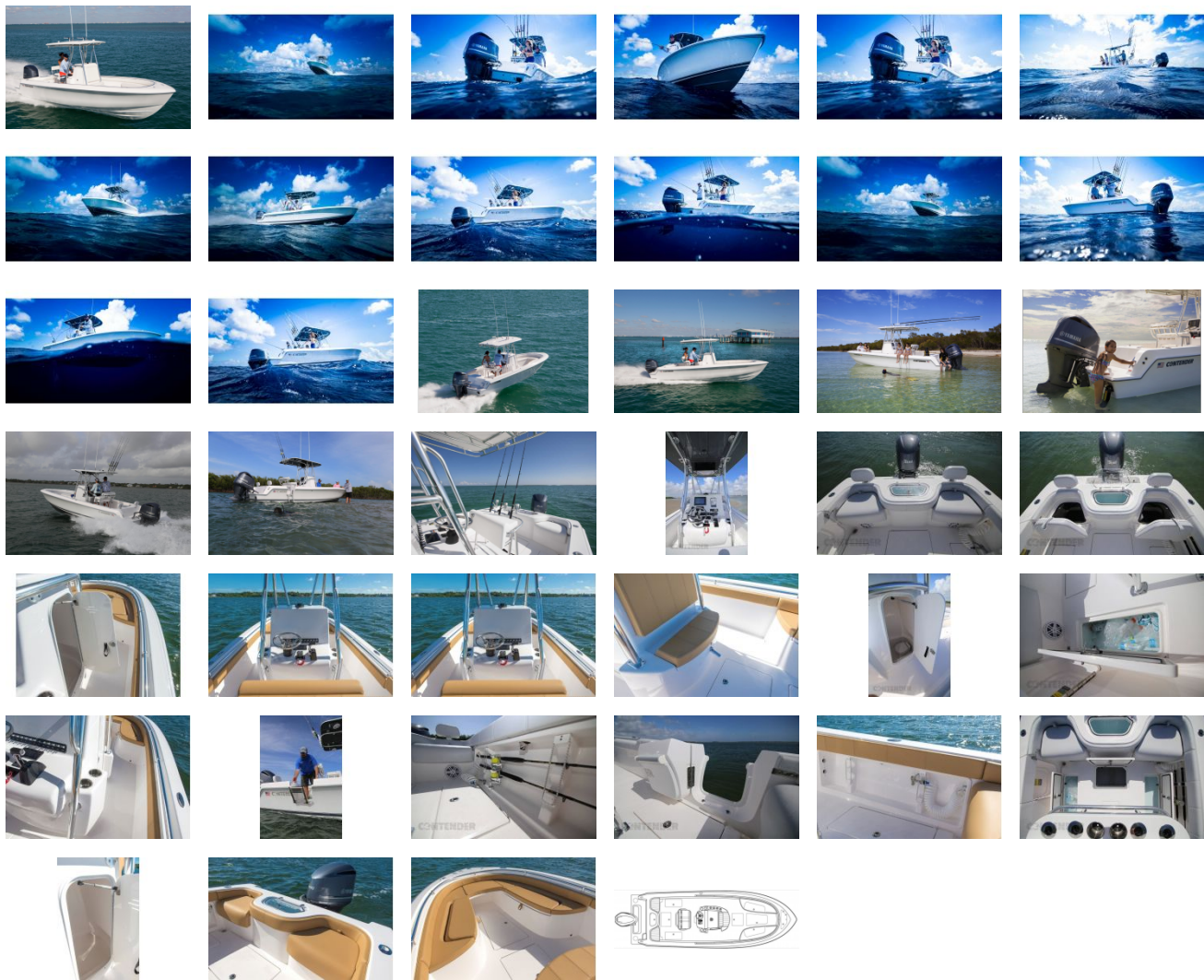
- Anchor locker storage
- Forward bench seating
- Removable forward seat insert (to convert seating to “U”)
- Two (2) 59 gallon storage compartments under
- Forward Seats
- 94 gallon forward fish box
- Console seat with insulated storage
- Custom sport console with built?in helm pod
- Step-down console with optional head
- Two (2) – 30 gallon aft fish boxes
- Oversized in-deck bilge access
- 26 gallon above deck live well
- Aft seating with additional bilge access

### Hull & Deck

- Hand-Laid Fiberglass Throughout High Tech Construction Using
- Multi-Directional Fabric & Foam Cored Glass Stringer System
- Foam Floatation
- Integrated Dive Platform, Full Transom & Transom Door
- Self-Bailing Cockpit
- Non-Skid Cockpit Sole & Deck
- Heavy Duty Rub Rail
- Choice of Hull & Deck Gelcoat Colors

- Hand-Painted Boot & Pin Stripe

GALLERY



**GSPS Marine**  
3807 Gulf Shores Parkway,  
Gulf Shores, AL, 36542  
Phone: 251-948-6748