



**Jefferson Beach Yacht Sales**  
24400 Jefferson Avenue,  
St. Clair Shores, MI 48080  
Phone: 866-490-5297

# Contender 39 ST

Boat Type: Sport Fishing



## OVERVIEW

The Crown Jewel of the Contender South Florida Fishing Fleet. This 39' stepped hull has fought seas, and caught fish up and down the coast. Contender One is rigged to fish with a second station hard top tower, extra livewells, and rod holders throughout, a tackle station, and other fishing amenities. With a Contender, You're **Always in the Game.**

## SPECIFICATIONS

### Basic Information

Manufacturer:	Contender	Boat Type:	Sport Fishing
Model:	39 ST	Hull Material:	Fiberglass
Hull Type:		Category:	Power

## Dimensions & Weight

Length:	39.00 ft	Draft - max:	2 ft - 0.61 meter
LOA:	39 ft - 11.89 meter	Bridge Clearance:	-
Beam:	10 ft 10 in - 3.3 meter	Dry Weight:	15400 ft
Deadrise Aft:	24.00 °		

## Tank Capacities

Fuel Tank:	500 gallons - 1 tank(s)	Holding Tank:	-
Fresh Water Tank:	-		

## Accommodations

Total Cabins:	-	Crew Cabins:	-
Total Berths:	-	Crew Berths:	-
Total Sleeps:	-	Crew Sleeps:	-
Total Heads:	-	Crew Heads:	-
Captains Cabin:	No		

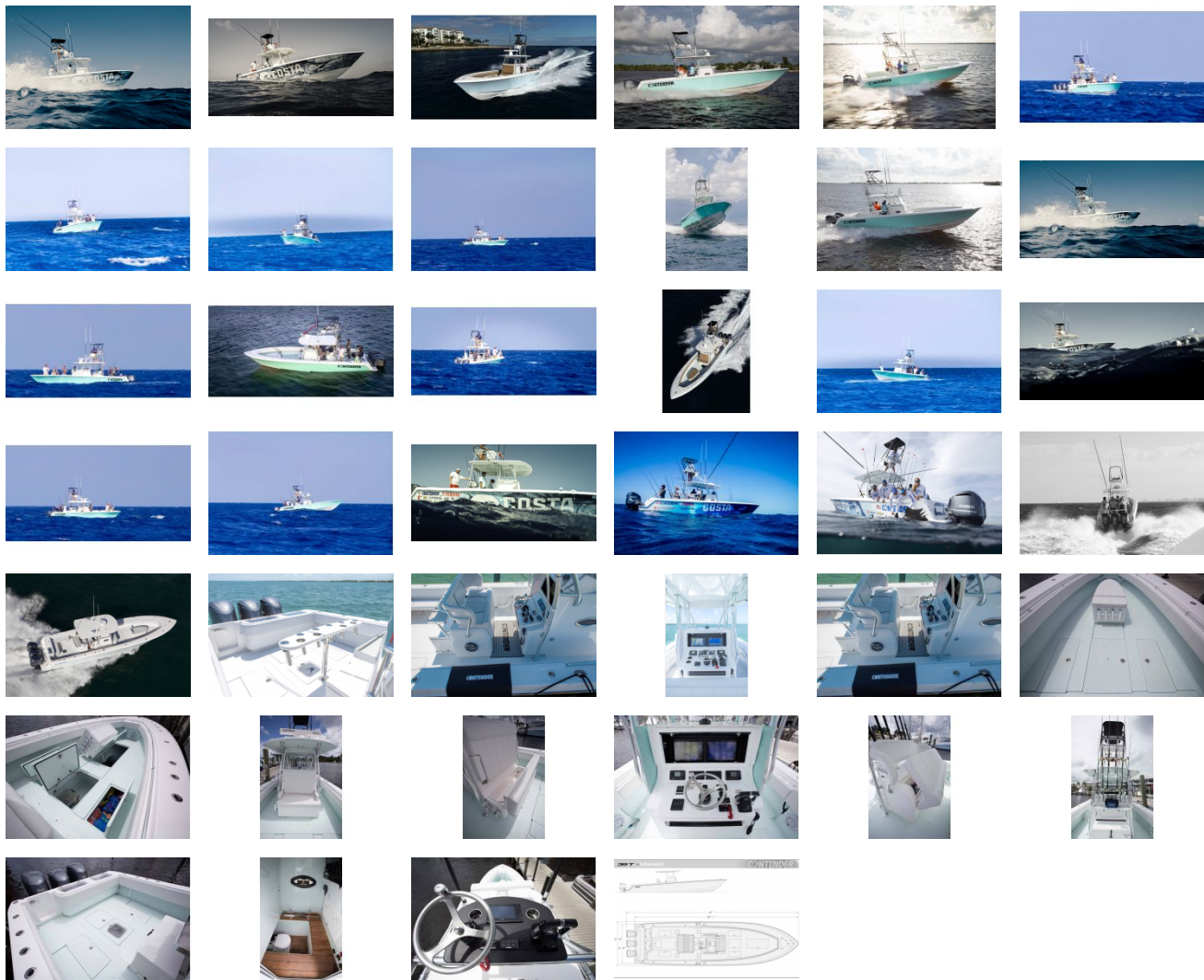
## FEATURES

### Standard:

Forward Anchor Locker w/Storage  
260 Gal. Fully Lined  
145 Gal. Fully Lined & Insulated Forward Fish Box  
(2) 105 Gal. Fully Lined & Insulated Aft Fish Boxes (Port & Starboard)  
40 Gal. Transom Livewell  
8" Pop-Up Cleat  
Heavy Duty Bow Lifting Ring in Floor Peak Locker  
(2) Heavy Duty Stern Lifting Rings  
(2) 10" Stern Cleats  
(2) 8" Cleats w/Hause Pipes – Midship  
(4) Flush Mount Gunnel Rod Holders  
Custom Aluminum Recessed Bow Handrail  
Bilge Liner  
Extra Large Walk-in Console Fully Lined and Finished W/Head Compartment  
Oversized Electronics Panel  
Molded in Front Console Seat  
Lockable Storage Inside Console  
Custom Helm Pod  
Chrome on Bronze or Stainless Steel Hardware  
Non-Skid Cockpit Sole & Deck  
Heavy Duty Rub Rail  
Choice of Hull & Deck Gel Coat Colors  
Custom Hand-Painted Boot & Pin Stripe w/Choice of Colors  
International Lighting  
Recessed Pop-up Bow Light

Dual Hydraulic Steering w/Power Assist Pump  
Kiekaffer Trim Tabs (Recessed)  
Waterproof Switches & Breaker Panel w/Indicator Lights  
2000 GPH Auto/Manual Bilge Pump  
High Speed Compass

GALLERY



**Jefferson Beach Yacht Sales**  
24400 Jefferson Avenue,  
St. Clair Shores, MI 48080  
Phone: 866-490-5297