



GSPS Marine
3807 Gulf Shores Parkway,
Gulf Shores, AL, 36542
Phone: 251-948-6748

Cobia 277 CC

Boat Type: Center Console



OVERVIEW

Have it all and still stay in your comfort zone.

Built for those who feel 30 feet is a bit too much and 25 is just not enough, the new Cobia 277 provides big water performance and features in a manageable package. Serious anglers will appreciate the stem to stern, single level cockpit, the dual over-sized fish boxes with macerators, and the deluxe tackle station worthy of a sport fisher. Though tournament ready, the 277 CC doesn't forget the creature comforts. The boat comes standard with hideaway electrically lifted bow table, forward entry step-down console with china head, deluxe bolstered helm seats and fold-down rear bench seating. Easy access for maintenance of the plumbing, batteries and electrical systems finishes out the smart layout. With the new Cobia 277 CC, you can still have it all while staying in your comfort zone.

SPECIFICATIONS

Basic Information

Manufacturer:	Cobia	Boat Type:	Center Console
Model:	277 CC	Hull Material:	
Year:	2020	Hull Type:	
Category:	Power		

Dimensions & Weight

Length:	27.00 ft	Draft - max:	1 ft 10 in - 0.56 meter
LOA:	27 ft 7 in - 8.41 meter	Bridge Clearance:	-
Beam:	9 ft 8 in - 2.95 meter	Dry Weight:	5200 ft
Deadrise Aft:	21.00 °		

Tank Capacities

Fuel Tank:	189 gallons - 1 tank(s)	Holding Tank:	-
Fresh Water Tank:	-		

Accommodations

Total Cabins:	-	Crew Cabins:	-
Total Berths:	-	Crew Berths:	-
Total Sleeps:	-	Crew Sleeps:	-
Total Heads:	-	Crew Heads:	-
Captains Cabin:	No		

FEATURES

Boat Features & Options

Steering and Handling

Display upgrade for Yamaha Command Link Plus (Optional)
Electronic Optimus power steering (Optional)
Hydraulic tilt steering (Standard)
Hydraulic tilt steering (twin) (Optional)
Optimus joystick control (twin engine) (Optional)
Power assist steering (Optional)
Prop (Standard)
Steering wheel upgrade : Edson w/ power knob upgrade (stainless) (Optional)
Steering wheel upgrade : Edson w/ power knob upgrade (black) (Optional)
Trim tab indicator (Optional)
Trim tabs (Standard)
Yamaha 6YC Information Station (Standard)
Yamaha fuel/water separator & control cables (w/ engine option) (Standard)

Quality Finish and Construction

Powder coating package (black, incl t-top) (Optional)
Powder coating package (white, incl t-top) (Optional)
Powder coating package (black, no t-top) (Optional)
Powder coating package (white, no t-top) (Optional)
Powder coating package (grey, incl t-top) (Optional)
Powder coating package (grey, no t-top) (Optional)
Powder coating package (matte black, incl t-top) (Optional)
Powder coating package (matte black, no t-top) (Optional)
Premium fade-resistant gelcoat (Standard)
Stainless steel rub rail (Standard)
Stainless steel thru-hulls w/ seacocks below water line (Standard)
White rub rail w/ stainless steel insert upgrade (Optional)

Family Features

All white cushion color (Standard)
Boarding ladder (Standard)
Cockpit bolsters (aft) (Standard)
Cushion, bow (6 pc set) (Optional)
Electric head w/ macerator (w/ port window) (Optional)
Forward-facing bow backrests (port & stbd) (Optional)
Fresh water washdown system (Standard)
Head, pump-out w/ deck fitting (Optional)
Insulated cooler in console (52 qt) (Standard)
Portable head (w/ port window) (Optional)
Raw water washdown (Standard)
Speakers (4 for Hard-top) (Optional)
Stereo (Fusion 4-speaker) (Optional)
T-top fiberglass hard top (Optional)
T-top fiberglass hard top (deluxe w/ outriggers, elec box & spreader light) (Optional)
Two-tone cushion color upgrade (almond/tan) (Optional)
Two-tone cushion color upgrade (grey/white) (Optional)
Two-tone cushion color upgrade (tri-color platinum) (Optional)

Fishing Features

Cockpit insulated fish boxes (2-45 gal) (Standard)
Fish box pump-out w/ macerator (2) (Optional)
Flush-mount kite rod holder (4) (Optional)
Garmin 10in touchscreen w/ sonar (GPSMAP 7610XSV) (Optional)
Garmin 12in touchscreen w/ sonar (GPSMAP 7612XSV) (Optional)
Garmin transducer B175L upgrade for 12in systems (Optional)
Garmin VHF 200 radio w/ antenna (Optional)
Garmin transducer B175L upgrade for 10in systems (Optional)
Garmin autopilot for EPS steering (Optional)
Garmin radar (GMR 424) (Optional)
Garmin 12in touchscreen w/ sonar dual screen (GPSMAP 7612XSV/7612) (Optional)
Livewell (29 gal) (Standard)
Rod rack for leaning post (Optional)

SS gunnel rod holders (6) (Standard)
T-top kingfish rod holders (1 port, 1 stbd) hard top (Optional)
Under-gunnel rod storage (Standard)

Livewells and Pumps

Automatic bilge pump (addl) (Optional)
Ultra bilge pump switch (upgrade) (Optional)

Cockpit and Storage

Anchor hanger in bow v (Optional)
Faux teak decking : console floor, brown/black (Optional)
Faux teak decking : console floor, grey/black (Optional)
Helm seat tackle station (w/ premium upgraded seating, white) (Standard)
Self-bailing cockpit (Standard)

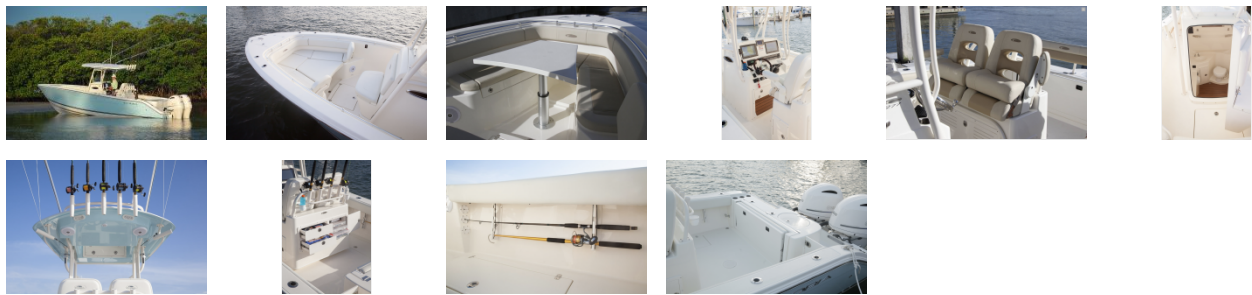
Safety, Comfort and Convenience

Bow rail (fully recessed) (Standard)
Cobia trailer no windlass (tandem axle) (Optional)
Cobia trailer for windlass (tandem axle) (Optional)
Cockpit lights, compass & helm footrest (Standard)
Cockpit toe rail (Optional)
Console seating w/ backrest & cushion (Standard)
Shipping cover (Transhield), single engine (Optional)
Shipping cover : None (Optional)
Shipping cover (Transhield), twin engines (Optional)
Trailer aluminum wheels option (each) (Optional)
Trailer spare tire option (Optional)

Lights and Electric

Battery 31 series (Optional)
Battery charger (3-bank w/ inlet) (Optional)
Battery charger (4-bank w/ inlet) (Optional)
Line upgrade for windlass system : 300ft (Optional)
SS flush mount flip-up bow light & chocks (2) (Standard)
Stainless steel anchor upgrade for windlass system (Optional)
Underwater lights, blue (set of 2) (Optional)
Waterproof Deutsch electrical connectors (Standard)
Windlass Deluxe: chain, rope, anchor & stem chafing guard (Optional)
Wireless remote for windlass system (Optional)

GALLERY



GSPS Marine
3807 Gulf Shores Parkway,
Gulf Shores, AL, 36542
Phone: 251-948-6748