



GPS Marine
3807 Gulf Shores Parkway,
Gulf Shores, AL, 36542
Phone: 251-948-6748

Pathfinder 2200 TRS

Boat Type: Sport Fishing



OVERVIEW

All the features of the famous 2200 and so much more.

The newly redesigned Pathfinder 2200 TRS for 2015 still has all the features that made it the top of its class but now has undergunwale rod storage and gunwale cup holders standard. Now it's even more of a do most anything and go most anywhere crowd pleaser. Catch the early morning bite, take the family for a mid-day ski, and then invite your friends over for a sunset cruise. With a larger deck, integrated aft seating, and seven storage compartments, there's room for everyone and all the day's gear.

Best of all, because you're in a Pathfinder, you can do it all in unmatched safety, confidence and style.

SPECIFICATIONS

Basic Information

Manufacturer:	Pathfinder	Boat Type:	Sport Fishing
Model:	2200 TRS	Hull Material:	
Year:	2018	Hull Type:	
Category:	Power		

Dimensions & Weight

Length:	22.00 ft	Draft - max:	0 ft 11 in - 0.28 meter
LOA:	22 ft 1 in - 6.73 meter	Bridge Clearance:	-
Beam:	8 ft 6 in - 2.59 meter	Dry Weight:	2850 ft
Deadrise Aft:	15.00 °		

Tank Capacities

Fuel Tank:	55 gallons - 1 tank(s)	Holding Tank:	-
Fresh Water Tank:	-		

Accommodations

Total Cabins:	-	Crew Cabins:	-
Total Berths:	-	Crew Berths:	-
Total Sleeps:	-	Crew Sleeps:	-
Total Heads:	-	Crew Heads:	-
Captains Cabin:	No		

FEATURES

Steering and Handling

Display upgrade for Yamaha Command Link Plus (Optional)
Hydraulic jackplate w/ blinker switch (10 in for VF engines) (Optional)
Hydraulic jackplate w/ blinker switch (6 in for F engines) (Optional)
Hydraulic steering (Standard)
Hydraulic tilt steering (Optional)
Steering wheel upgrade : Edson w/ power knob upgrade (stainless) (Optional)
Steering wheel upgrade : Edson w/ power knob upgrade (black) (Optional)
Trim tabs (Standard)
Yamaha 6YC Information Station (Standard)

Quality Finish and Construction

Aluminum motor-bolt reinforcement plates (Standard)
Backing plate for trolling motor installation (Standard)
Bow lifting cleat (6 in) (Optional)

No wood, no rot foam & core w/ premium resin (Standard)
Powder coating package (white, no t-top) (Optional)
Powder coating package (white, incl t-top) (Optional)
Powder coating package (black, no t-top) (Optional)
Powder coating package (black, incl t-top) (Optional)
Powder coating package (grey, no t-top) (Optional)
Powder coating package (grey, incl t-top) (Optional)
Powder coating package (matte black, no t-top) (Optional)
Powder coating package (matte black, incl t-top) (Optional)
Premium fade-resistant gelcoat (Standard)
Recessed hardware for snag-free fishing (Standard)
Stainless steel thru-hulls w/ seacocks below water line (Standard)
Stereo (4-speaker Fusion) (Optional)
White rub rail w/ stainless steel insert upgrade (Optional)

Family Features

All white cushion color (Standard)
Boarding ladder (Standard)
Center console full forward access w/ dutch doors (Standard)
Cooler mounted in front of console w/ cushion set (deluxe Engel cooler, 50 qt) (Standard)
Cushion package (fwd rod locker lids) (Optional)
Cushion, bow (Optional)
Forward-facing bow backrests (port & stbd, w/ grabrails) (Optional)
Fresh water washdown system (Optional)
Frp removable cooler w/ cushion upgrade (large, white) (Optional)
Frp removable cooler w/ cushion upgrade (large, hull-matched) (Optional)
Raw water washdown (Optional)
Rod racks for fiberglass hard top (6) (Optional)
T-top (Optional)
T-top fiberglass hard top (w/ elec box & spreader lights) (Optional)
T-top w/ electronics box (Optional)
Two-tone cushion color upgrade (almond/tan) (Optional)
Two-tone cushion color upgrade (grey/white) (Optional)

Fishing Features

Bass seat plate (specify location) (Optional)
Console rod rack (2, 4-bank) (Standard)
Flush-mount gunnel rod holder (2) (Standard)
Flush-mount gunnel rod holders (2 addl to 2 std) (Optional)
Garmin 12in touchscreen w/ sonar (GPSMAP 7612XSV) (Optional)
Garmin VHF 200 radio w/ antenna (Optional)
Garmin 7in touchscreen w/ sonar (GPSMAP 741XS) (Optional)
Garmin 10in touchscreen w/ sonar (GPSMAP 7610XSV) (Optional)
Locking storage to accommodate rods to 9 ft (port & stbd) (Standard)
Prof. Package: 3-bank battery charger & Power Pole (8 ft, black) (Optional)
Prof. Package: 3-bank battery charger & Power Pole (8 ft, white) (Optional)
Prof. Package: 3-bank battery charger & Power Pole (10 ft, black) (Optional)
Prof. Package: 3-bank battery charger & Power Pole (10 ft, white) (Optional)

T-top kingfish rod holders (1 port, 1 stbd) (Optional)
TM wiring system complete with battery tray(s) (24V) (Standard)
Trolling motor Motorguide Great White Dig Hand-Ctrl, 60 in, 24V (Optional)
Trolling motor Motorguide Xi5 Wireless Elec Steer w/GPS, 60 in, (Optional)
Under-gunnel rod storage w/ tubes (2 per side) (Standard)

Livewells and Pumps

Automatic bilge pump (Standard)
Livewell (28-gallon, aft center) (Standard)
Recirculating pump system (livewell, aft center) (Optional)
Recirculating pump system (requires releasewell option, aft port) (Optional)
Release well (aft port) (Optional)

Cockpit and Storage

Anchor locker (Standard)
Faux teak decking : under-gunnel, brown/black (Optional)
Faux teak decking : under-gunnel, grey/black (Optional)
Large guttered, gasketed, lock-down dry storage compartments (2) (Standard)
Leaning post backrest w/ cushion (Optional)
Leaning post w/ livewell (Optional)
Leaning post w/ rod holders deluxe Engel cooler (Standard)
Self-bailing cockpit (Standard)

Safety, Comfort and Convenience

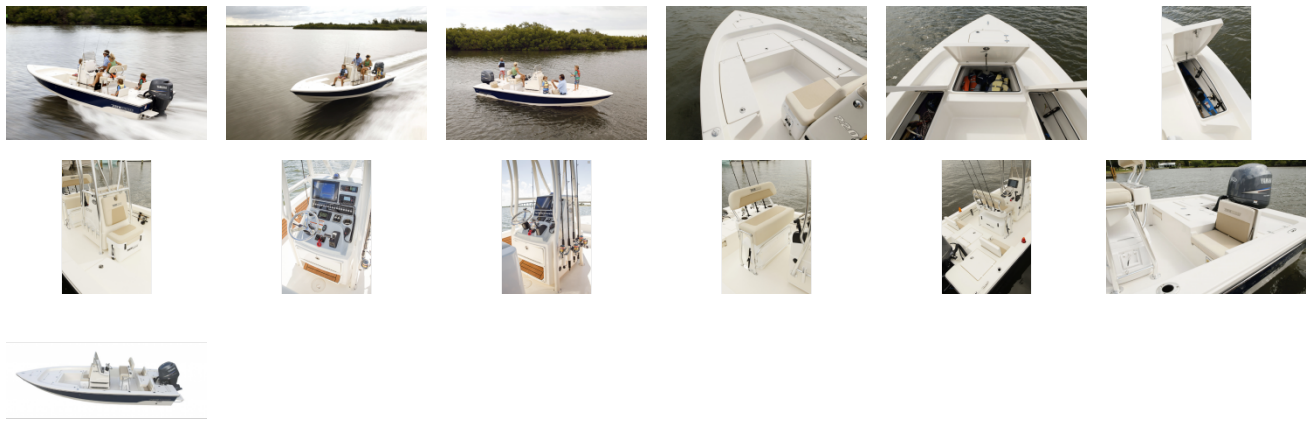
Aft deck flip-up seating (Standard)
Compass (Standard)
Console windshield & grabrail (Standard)
Cover boat, no t-top (grey) (Optional)
Cover boat, w/ t-top (grey) (Optional)
Cover console, no t-top (grey) (Optional)
Cover lp & backrest (grey) (Optional)
Flush-mount bow cleat (6 in) (Standard)
Flush-mount stern cleat (2) (Standard)
Full closed-foam flotation throughout (Standard)
Pathfinder trailer (tandem axle) (Optional)
Shipping cover : None (Optional)
Shipping cover (shrink wrap) (Optional)
Spring line cleats (2, folding) (Optional)
Stern lifting hardware (set of 2) (Optional)
Trailer aluminum wheels option (each) (Optional)
Trailer spare tire option (Optional)
Trailer swing tongue option (Optional)

Lights and Electric

12-volt accessory jack (Standard)
Battery 31 series (Optional)

Battery charger (4-bank upgrade for Pro Pack) (Optional)
Main breakers w/ independent house & TM battery switches (Standard)
Navigation lights, LED (console) (Standard)
Nickel-tinned fused wiring harness (Standard)
Underwater lights, blue (set of 2) (Optional)
Waterproof switch panel w/ circuit breakers (Standard)

GALLERY



GSPS Marine
3807 Gulf Shores Parkway,
Gulf Shores, AL, 36542
Phone: 251-948-6748