



Knoxville Yacht Sales
1914 Ridge Oak Lane
Knoxville, TN 37922
Phone: 865-381-1584

Tiara Yachts 44 Flybridge

Boat Type: Flybridge



OVERVIEW

With beautiful lines, sleek new flybridge and legendary Tiara accoutrements, the F44 Flybridge will put you on top of the world. Sit back comfortably in ample, inclusive spaces that connect captain and guests. Enjoy the views from an easy-to-access flybridge, featuring bridge and guest lounges. It's the perfect combination of styling and efficiency of space that make the Tiara a sleeker, more sophisticated 44-footer that others can only look up to.....quite literally.

The graceful profile and elegant finishes may be refined, but the Volvo Penta IPS 600s provide superior performance as needed. Engineered with a glass cockpit and effortless joystick operation, the F44 delivers new levels of enjoyment and ease of use. Head offshore with friends and family to enjoy a day away from it all with confidence and comfort.

SPECIFICATIONS

Basic Information

Manufacturer:	Tiara Yachts	Boat Type:	Flybridge
Model:	44 Flybridge	Hull Material:	
Year:	2019	Hull Type:	
Category:	Power		

Dimensions & Weight

Length:	44.00 ft	Draft - max:	3 ft 11 in - 1.19 meter
LOA:	45 ft 6 in - 13.87 meter	Bridge Clearance:	20 ft - 6.1 meter
Beam:	14 ft 11 in - 4.55 meter	Dry Weight:	32500 ft
Deadrise Aft:	18.00 °		

Tank Capacities

Fuel Tank:	350 gallons - 1 tank(s)	Holding Tank:	35 gallons - 1 tank(s)
Fresh Water Tank:	118 gallons - 1 tank(s)		

Accommodations

Total Cabins:	-	Crew Cabins:	-
Total Berths:	-	Crew Berths:	-
Total Sleeps:	-	Crew Sleeps:	-
Total Heads:	-	Crew Heads:	-
Captains Cabin:	No		

FEATURES

STANDARD FEATURES

HULL AND DECK

- Tiara Yachts' transferable limited warranties: five (5) years on hull and deck; two (2) years on accessories. Exclusions apply - refer to 2018 warranty statement for specific details & coverage areas.
- Fresh white gelcoat hull and deck
- Axalta® solid painted bootline, Carbon
- Hull constructed with a gelcoat outer layer, balsa cored hullsides and hand-laid fiberglass using premium resin
- Deck constructed with a gelcoat outer layer, balsa & closed dell foam coring and hand-laid fiberglass using premium resin
- Deck side engine air intake system with built-in step for boarding
- Bronze seacocks on all underwater thru-hull fittings
- Tiara custom diamond pattern non-skid deck & cockpit surfaces
- Wood and foam core stringers, encapsulated by hand-laid fiberglass, are integrated to the hull
- Gelcoated & fiberglass-lined bilge areas
- Hullside windows with opening ports in guest stateroom
- Four (4) S.S. opening port lights
- Poly rubrail with 316L S.S. cap

- Six (6) 12" S.S. cleats for lines
- Tiara custom composite sedan bridge, aluminum windshield frame with tempered safety glass, safety handrails
- LED navigation & courtesy lights
- Two (2) Coats of Anti-fouling Bottom Paint

FOREDECK

- One (1) Bomar® extruded aluminum opening forward deck hatch w/built-in Ocean Air® screens & privacy covers
- One-piece welded, 316L S.S. 1 1/4" bow rail, staff, & Tiara burgee
- Flush forward anchor locker with overboard drain
- Concealed Lewmar CPX3 automatic rope/chain anchor windlass system with Lewmar® handheld tethered deluxe remote control & a switch at helm. Includes one (1) 12" S.S. foredeck cleat, 40' chain rode, 200' rope rode, & 17 kg/37 lb. Lewmar® DTX stainless steel anchor.
- Windshield cover
- Chaise lounge sun pad with cup holders and handholds. Upholstered in white vinyl and includes weather cover.

TRANSOM AREA

- Dual transom entry doors with stainless steel frame & hardware
- S.S. grab rails on transom
- Transom storage compartment with fiberglass liner & one-piece actuated door. Dedicated storage with large opening to the trunk space.
- Two (2) 10" S.S. pop-up cleats
- 60" integrated swim platform with S.S. telescoping swim ladder
- Recessed transom shower, hot & cold water
- Fresh water washdown outlet with 25 ft. coiled blue hose
- Raw water washdown outlet with 25 ft. coiled hose
- 120V GFI outlet

AFT COCKPIT

- Molded-in forward facing lounge
- Teak cockpit coffee table with manual hi-lo
- Molded-in steps to deck walkways & swim platform. Safety handrails above deck walkway steps
- Cockpit LED courtesy lighting with remote control
- Starboard side aft facing seat with storage below, and Port-side storage with Corian® countertop below flybridge steps (may be optioned to include a refrigerator or ice maker)
- See Salon and Helm Area for main stereo component details. Two (2) exterior JL® Audio 7.7" speakers, one (1) Polk® Audio 8" subwoofer powered by a JL® Audio M series digital amp
- Weather covers for cockpit furniture
- Aft cockpit camera

FLYBRIDGE

- Aluminum floating steps structure with teak step treads and ss rails
- Access hatch for flybridge steps
- Framed plexiglass venturi wind screen with safety rail
- Helm with drink holders, 12V and 120V outlets, & 17.5" leather-wrapped steering wheel. Standard Volvo® Glass Cockpit integrated electronics package
- Double wide helm seat on electric slide with joystick and Garmin® GRID remote in armrest
- Console with Garmin® electronics package
- Hardtop with arch and forward supports, two (2) Bomar® hatches
- Entertainment center with refrigerator, sink, and cutting board

- Port L-lounge with top access storage
- Aft U-lounge with hi-lo table, convert to sunpad
- See Salon for main stereo component details. Four (4) JL® Audio speakers, powered by JL® Audio digital amplifier
- Weather covers for helm console, helm chairs
- Red, white, and blue LED hardtop lights

INTERIOR GROUP

- Architectural teak & wenge interior wood
- Solid teak floor in salon, lower atrium, and master stateroom. Riser in master and VIP stateroom is carpeted
- 120V outlets throughout
- 12V LED lighting throughout
- Eight (8) throw pillows

SALON AREA

- Aft window & sliding doors with duette blinds
- Duette blinds for port & starboard salon windows
- 29" LCD TV with Samsung® Blu-Ray DVD player and Soundbar
- Fusion® 3 Black Box MS-BR300R 3 zone system with wired remote. Powered by JL® Audio M400 digital amp with four JL® Audio 4" speakers and Polk® 8" subwoofer with tuned enclosure. Accepts USB/MP3 and has integrated bluetooth.
- Marine Air Systems® 22,000+ BTU salon air conditioning system
- Opening port and starboard side windows
- Port L-lounge companion seating for four (4) with high gloss teak, manual hi-lo leafing table
- Starboard side, port facing love seat, forward of galley

CENTRAL GALLEY

- Safety handrails
- Corian® countertops
- S.S. undermount sinks with hot/cold water faucet
- Recessed two-burner electric cooktop, exhaust fan, and backsplash
- Isotherm® 120V drawer unit - drawer refrigerator on top with lower drawer freezer
- Microwave/convection oven
- Storage drawers below counter top
- Upper galley storage, port and starboard
- Waste receptacle

MASTER STATEROOM

- Private entrance to master stateroom and head
- Opening deck hatch for natural lighting and blinds for windows. Opening ports for ventilation in master stateroom & head.
- Solid teak floor with carpeted riser
- Pedestal berth with pillowtop innerspring mattress, upholstered headboard, coverlet, & pillow shams
- Storage compartment below berth, manually actuated with gas springs
- Shelves, port and starboard with storage
- Cedar-backed hanging locker
- Overhead indirect lighting
- Two (2) reading lights, independently switched
- Marine Air Systems® 8,000 BTU air conditioning system for master stateroom and day head

- 24" flat screen TV
- Blu-Ray DVD player
- Two JL® Audio 6.5" speakers with Fusion® remote

MASTER HEAD

- Full frame door with private master stateroom entry
- Fiberglass stall shower with sump pump, glass shower door, & teak seat
- Teak countertop with solid surface accents, vessel sink, hot/ cold water faucet
- Lighted upper medicine cabinet with mirror
- Lower vanity storage
- Privacy shades for opening portlights
- Solid teak floor
- VacuFlush® toilet
- Exhaust fan
- Air conditioning vent (controls in master stateroom)

VIP STATEROOM

- Carpeted floor
- Twin berths with innerspring mattresses, upholstered headboard, coverlets, pillow shams, and storage under forward berth. Includes filler cushions that are stored under the aft end of the forward mattress.
- Cedar-backed hanging locker, starboard
- Upper hullside cabinets, port & starboard
- Hullside windows w/opening ports & privacy shades
- Skylight with privacy cover for natural light
- Two (2) reading lights, independently switched
- Marine Air Systems® 6,000 BTU air conditioning system

VIP/DAY HEAD

- Full frame doors with entry from atrium
- Fiberglass stall shower with sump pump, glass door, & teak seat covering VacuFlush® toilet
- Teak countertop with solid surface accents, vessel sink, hot/ cold water faucet
- Lighted upper medicine cabinet with mirror
- Lower vanity storage
- Solid teak floor
- Vacuflush toilet
- Exhaust fan
- Air conditioning vent (controls in VIP stateroom)

INSTRUMENTATION, SAFETY, AND EQUIPMENT

- Tiara custom 12V DC & 120V/240V AC electrical system with master distribution panels in the galley
- One 240V AC 50 amp 65' dockside power cord with Glendinning® cable recoiler & adapter for 30 amp service
- Cable TV inlets/outlets with 65' dockside cord
- TV & AM/FM radio antennas
- Onan® 11.5 kw diesel generator with sound shield & helm indicator
- Battery charger (1), 100 amp
- 12V multiple bank battery system with batteries & remote battery switches. Five (5) engine batteries and four (4) house batteries
- Electrical bonding system

- Galvanic Isolator and ELCI Circuit Protection
- Volvo® Active Corrosion Protection
- Volvo® electronic engine controls & steering system on bridge
- Volvo® IPS Joystick Plus control on bridge
- Volvo® engine option includes low idle speed cruise & trip computer software on bridge
- Volvo® Glass Cockpit integrated electronics package with Volvo® engine option on bridge:

Two Volvo® /Garmin® 7612 12" displays with card reader and GRID remote
 Volvo® autopilot
 Joystick driving
 Garmin® 604 HD 4 ft./6kw open array radar and pedestal with radar mount
 Garmin® VHF300 radio
 Garmin® Cockpit Camera
 1kw transducer

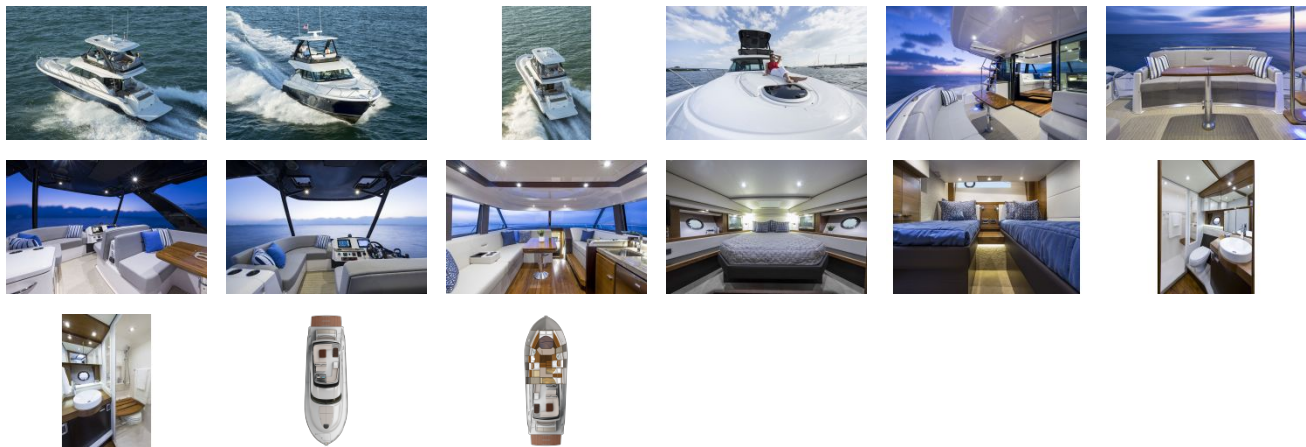
- Garmin® electronics package with Cummins® engine option on bridge:

Two Garmin® 7612, 12" displays with card reader
 Garmin® autopilot
 Garmin® 604 HD 4 ft./6kw open array radar and pedestal with radar mount
 Garmin® VHF300 radio
 Garmin® Cockpit Camera
 1kw transducer

- Ritchie® SuperSport SS2000 compass
- Propellers
- Lenco® trim tabs
- Zinc Sacrificial Anodes
- Engine room with lighting and acoustical insulation
- Racor® fuel filters/water separators, engines & generator
- Raw water intake strainers, engines & generator
- Vibration mounts, engines & generator
- Plate mounted, thru-bolted engine system
- Three (3) port oil changing system, main engines & generator
- Beede® indicator LEDs for aft bilge pump, mid bilge pump, forward bilge pump, & generator
- Three (3) automatic/manual electric bilge pumps with monitors at helm, 2,000 GPH each; one (1) forward, one (1) mid & one (1) aft
- One (1) aluminum fuel tank, total capacity 350 gallons, with in-line fuel vent filters & fuel shut-off valves on top of tank
- Dockside water inlet, aft deck
- One (1) fresh water tank, total capacity 118 gallons
- One (1) holding tank, 35 gallons, with deck discharge & holding tank vent filter
- Fresh water tank/holding tank monitor
- Fresh water pressure system with ten (10) GPM pump
- One (1) water heater, 11 gallons
- Kahlenberg® chrome dual trumpet air horn
- FE-227 agent automatic/manual fire extinguisher system for engine room
- Four (4) handheld fire extinguishers
- Carbon monoxide detectors & smoke detectors in all staterooms
- Eight (8) 5/8" x 50' black dock lines with dedicated storage
- Eight (8) Tiara life vests (domestic boats only)

- USCG safety & medical kit
- USCG/international LED navigation lighting
- NMMA certified using ABYC standards
- International certification options available (European CE and others)
- USCG safety & medical kit
- USCG/international LED navigation lighting
- NMMA certified using ABYC standards
- International certification options available (European CE and others)

GALLERY



Knoxville Yacht Sales
1914 Ridge Oak Lane
Knoxville, TN 37922
Phone: 865-381-1584