



GSPS Marine
3807 Gulf Shores Parkway,
Gulf Shores, AL, 36542
Phone: 251-948-6748

Tiara Yachts 53 Flybridge

Boat Type: Flybridge



OVERVIEW

Infused with beautiful lines, sleek new flybridge and legendary Tiara accoutrements, the F53 Flybridge will put you on top of the world. Sit back comfortably in ample, inclusive spaces that connect captain and guests. Enjoy the views from an easy-to-access flybridge, featuring bridge and guest lounges. It's the perfect combination of styling and efficiency of space that make the Tiara a sleeker, more sophisticated 53-footer that others can only look up to.....quite literally.

The graceful profile and elegant finishes may be refined, but the Volvo Penta IPS II 950s provide superior performance as needed. Engineered with a glass cockpit and effortless joystick operation, the F53 delivers new levels of enjoyment and ease of use. Head offshore with friends and family to enjoy a day away from it all with confidence and comfort.

SPECIFICATIONS

Basic Information

Manufacturer:	Tiara Yachts	Boat Type:	Flybridge
Model:	53 Flybridge	Hull Material:	
Year:	2019	Hull Type:	
Category:	Power		

Dimensions & Weight

Length:	53.00 ft	Draft - max:	4 ft 8 in - 1.42 meter
LOA:	54 ft 6 in - 16.61 meter	Bridge Clearance:	20 ft 8 in - 6.3 meter
Beam:	15 ft 11 in - 4.85 meter	Dry Weight:	51318 ft
Deadrise Aft:	14.00 °		

Tank Capacities

Fuel Tank:	650 gallons - 1 tank(s)	Holding Tank:	86 gallons - 1 tank(s)
Fresh Water Tank:	150 gallons - 1 tank(s)		

Accommodations

Total Cabins:	-	Crew Cabins:	-
Total Berths:	-	Crew Berths:	-
Total Sleeps:	-	Crew Sleeps:	-
Total Heads:	-	Crew Heads:	-
Captains Cabin:	No		

FEATURES

STANDARD FEATURES

HULL AND DECK

- Tiara Yachts®; transferable limited warranties: five (5) years on hull and deck; two (2) years on accessories. Exclusions apply - refer to 2018 warranty statement for specific details & coverage areas.
- Fresh white gelcoat hull and deck
- Axalta® solid painted bootline, Carbon
- Hull constructed with a gelcoat outer layer, balsa cored hullsides and hand-laid fiberglass using premium resin
- Deck constructed with a gelcoat outer layer, balsa and hand-laid fiberglass using premium resin
- Deck side engine air intake system with built-in step for boarding
- Bronze seacocks on all underwater thru-hull fittings
- Tiara custom diamond pattern non-skid deck & cockpit surfaces
- Wood and foam core stringers, encapsulated by hand-laid fiberglass, are integrated to the hull
- Gelcoated & fiberglass-lined bilge areas
- Molded in hullside windows with opening ports
- Poly rubrail with 316L S.S. cap
- Eight (8) 12" S.S. cleats for lines
- Tiara custom composite flybridge, aluminum windshield frame with tempered safety glass, safety handrails, & a

windshield wiper system with three (3) washer/wipers.

- LED navigation & courtesy lights
- Two (2) Coats of Anti-fouling Bottom Paint

FOREDECK

- One (1) Bomar® extruded aluminum opening forward deck hatch with built-in Ocean Air® screens & privacy covers
- One-piece welded, 316L S.S. 1 1/4" bow rail, staff, & Tiara burgee
- Flush forward anchor locker with overboard drain
- Concealed Lewmar CPX3 automatic rope/chain anchor windlass system with Lewmar's handheld tethered deluxe remote control & a switch at helm. Includes one (1) 12" S.S. foredeck cleat, 40' chain rode, 200' rope rode, & 20 kg/44 lb. Lewmar® DTX stainless steel anchor.
- Windshield cover
- Recessed chaise lounge sun pad with cup holders and handholds. Upholstered in white vinyl and includes weather cover.

TRANSOM AREA

- Dual transom entry doors with stainless steel frame & hardware
- S.S. grab rails on transom
- Transom storage compartment with fiberglass liner & one-piece actuated door
- Dedicated storage with easy access to items and large opening to the trunk space.
- Two (2) 10" S.S. pop-up cleats
- 70" integrated swim platform w/ telescoping S.S. swim ladder
- Recessed transom shower, hot & cold water
- Fresh water washdown outlet w/25 ft. coiled blue hose
- Raw water washdown outlet with 25 ft. coiled hose
- 120V GFI outlet

AFT COCKPIT

- Storage with access in cockpit sole
- Molded-in forward facing lounge
- Teak aft cockpit table with ottomans
- Molded-in steps to deck walkways & swim platform. Safety handrails above deck walkway steps.
- Cockpit LED courtesy lighting with remote control
- Starboard cockpit aft facing seat with storage below
- See Salon and Helm Area for main stereo component details. Two exterior JL Audio® 7.7" component speakers, one (1) Polk Audio® Audio 8" subwoofer speaker, and Fusion® remote.
- Weather covers for cockpit furniture

FLYBRIDGE

- Aluminum floating steps with teak step treads and stainless steel rails
- Access hatch for flybridge steps
- Framed plexiglass venturi wind screen with safety rails
- Double wide helm seat on electric slide
- Centerline console with Garmin electronics package
- Hardtop with arch and forward supports, two (2) Bomar® hatches
- Entertainment center with refrigerator, sink, cutting board, trash receptacle, and storage
- Port and starboard L-lounge with top access storage & removable drink holder/storage
- Aft U-lounge, with hi-lo high gloss teak table that converts to sunpad
- See Salon and Helm Area for main stereo component details. Four (4) JL Audio® 6.5" speakers and one (1) Polk

Audio® 8" subwoofer speaker powered by JL Audio® M400 digital amplifier.

- Weather covers for helm console, helm chairs
- Red/white/blue LED hardtop lights

INTERIOR GROUP

- Architectural teak & wenge interior wood with grain-filled finish & Chilewich® wall covering throughout
- Solid teak floor in salon, lower atrium, utility room, and VIP/forward stateroom. Master stateroom & risers in forward VIP stateroom are carpeted.
- Three skylights with built-in blinds
- 120V outlets throughout
- 12V LED lighting throughout
- Eight (8) throw pillows

SALON AND HELM AREA

- Aft window & sliding doors with duette blinds
- Duette blinds for port & starboard salon windows 40" LCD TV mounted on a hi-lo actuator (concealed when not in use) & storage compartment. Includes Soundbar and Blu-Ray player.
- Fusion® UD750 multi-zone stereo system powered by JL Audio® M400 digital amp with four (4) JL Audio® interior speakers, one (1) Polk Audio® 8" subwoofer speaker with tuned enclosure.
- Marine Air Systems® 40,000 BTU salon air conditioning system
- Opening port and starboard side windows
- Starboard side loveseat with electrical panel access and storage
- Port L-lounge sofa and club chair with storage & high gloss teak table on hi-lo pedestal. Seating for five

CENTRAL GALLEY

- Safety handrails
- Quartz countertops
- S.S. undermount sinks with hot/cold water faucet
- Recessed three-burner electric cooktop, exhaust fan, and backsplash
- Dual Isotherm® 120V drawer units - one refrigerator/refrigerator and one refrigerator/freezer
- Microwave/convection oven
- Storage drawers below counter top
- Upper storage cabinets
- Trash receptacle

LOWER ATRIUM & UTILITY ROOM

- Storage room with linen closet and Splendide® Ariston™ 110V stackable washer/dryer

MASTER STATEROOM

- Private entrance to master stateroom and head
- Full beam master stateroom with hullside windows for natural lighting & blinds for windows. Opening ports for ventilation in master stateroom & head. Port blind is electrically controlled.
- Carpeted floor
- Olympic queen pedestal berth with pillowtop innerspring mattress, quilt, and pillow shams
- Divided storage compartment below berth, manually actuated with gas springs.
- Shelves, starboard side, fore & aft of headboard
- Port side lounge/settee
- Cedar-backed hanging locker
- Overhead indirect lighting

- Two (2) reading lights, independently switched
- Marine Air Systems® 16,000 BTU air conditioning system for master stateroom and master head.
- Samsung® 32" flat screen TV
- Samsung® Blu-Ray DVD player
- Four (4) JL Audio® 4" speakers with Fusion® remote

MASTER HEAD

- Full frame door with private master stateroom entry
- Fiberglass stall shower with sump pump, glass shower door, & teak seat. Overhead waterfall shower head.
- Teak countertop with solid surface accents, vessel sink, hot/ cold water faucet
- Lighted upper medicine cabinet with mirror
- Lower vanity storage
- Privacy shades for opening portlights
- Solid teak floor
- VacuFlush® toilet
- Exhaust fan
- Air conditioning vent (controls in master stateroom)
- GFI protected outlets

VIP STATEROOM

- Private entry to VIP head
- Solid teak floor with carpeted risers
- Queen size pedestal berth, splits to make double berths. Innerspring mattresses, quilts, pillow shams, and storage under the berths.
- Bi-fold entry doors
- Cedar-backed hanging locker, starboard
- Upper hullside cabinets, port & starboard
- Opening portlights (2) with privacy shades
- Opening deck hatch
- Two (2) reading lights, independently switched
- Marine Air Systems® 10,000 BTU air conditioning system
- Two (2) JL Audio® 6.5" speakers with Fusion® remote

VIP/DAY HEAD

- Full frame doors with entry from VIP stateroom & atrium
- Fiberglass stall shower with sump pump, glass door, & teak seat
- Teak countertop with solid surface accents, vessel sink, hot/cold water faucet
- Lighted upper medicine cabinet with mirror
- Lower vanity storage
- Solid teak floor
- VacuFlush® toilet
- Exhaust fan
- Air conditioning vent (controls in VIP stateroom)

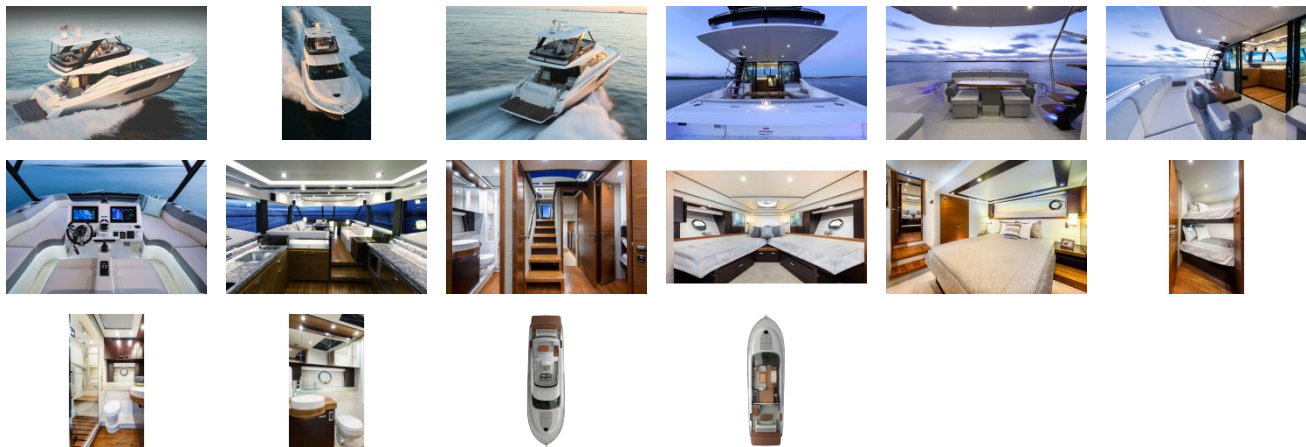
INSTRUMENTATION, SAFETY, AND EQUIPMENT

- Tiara custom 12V/24V DC & 120V/240V AC electrical system with master distribution panels
- Two(2) 240V A C 50 amp 65' dockside power cord with Glendinning cable recoiler & adaptors for 30 amp service
- Cable TV inlets/outlets with 65' dockside cord
- TV & AM/FM radio antennas

- Onan® 17kw diesel generator with sound shield & helm indicator
- Battery chargers (2), 80 amp & 16 amp
- 12V/24V multiple bank battery system with batteries & remote battery switches. Four (4) engine batteries & two (2) house batteries.
- Electrical bonding system with Galvanic Isolator and ELCI Circuit Protection
- Volvo® engine option includes:
 - DPS (Dynamic Positioning System)
 - Active Corrosion Protection
 - Volvo® electronic engine controls & steering system
 - Low speed, cruise control & trip computer software
 - Volvo® IPS Joystick Plus control
 - Volvo® exhaust bypass
 - Three (3) port oil changing system, main engines and generator
 - Volvo® Glass Cockpit integrated electronics package:
 - Two Volvo® 7616 16" displays with GRID armrest remote
 - Volvo® autopilot
 - Joystick driving
 - Garmin® 604 HD 4 ft./6kw open array radar and pedestal
 - Garmin® VHF300 & GHS10 handheld radios
 - 1kw transducer
- High output alternators, 115 amp
- Ritchie® SuperSport SS2000 compass
- Propellers
- Trim tabs
- Zinc Sacrificial Anodes
- Engine room with lighting and acoustical insulation
- Racor® fuel filters/water separators, engines & generator
- Raw water intake strainers, engines & generator
- Vibration mounts, engines & generator
- Plate mounted, thru-bolted engine system
- Five (5) port oil changing system, main engines & generator
- Beede® indicator LED's for aft bilge pump, mid bilge pump, forward bilge pump, & generator
- Three (3) automatic/manual electric bilge pumps with monitors at helm, 2,000 GPH each; one (1) forward, one (1) mid & one (1) aft
- One (1) aluminum fuel tank, total capacity 650 gallons with in-line fuel vent filters & fuel shut-off valves on top of the tank.
- Dockside water inlets, aft deck & anchor locker
- Two (2) fresh water tanks, total capacity 150 gallons
- One (1) holding tank, 86 gallons, with deck discharge & holding tank vent filter
- Fresh water tank/holding tank monitor
- Fresh water pressure system with ten (10) GPM pump
- One (1) water heater, 20 gallons
- Kahlenberg® chrome dual trumpet air horn
- FE-227 agent automatic/manual fire extinguisher system for engine room
- Four (4) handheld fire extinguishers
- Carbon monoxide detectors & smoke detectors in all staterooms & salon
- Eight (8) 5/8" x 50' black dock lines
- Four (4) large fenders

- Dedicated storage for dock lines & fenders
- Eight (8) Tiara life vests (domestic boats only)
- USCG safety & medical kit
- USCG/international LED navigation lighting
- NMMA certified using ABYC standards
- International certification options available (European CE and others)

GALLERY



GSPS Marine
3807 Gulf Shores Parkway,
Gulf Shores, AL, 36542
Phone: 251-948-6748