



Knoxville Yacht Sales
1914 Ridge Oak Lane
Knoxville, TN 37922
Phone: 865-381-1584

Tiara Yachts 39 Coupe

Boat Type: Motor Yacht



OVERVIEW

Continuing the success and enthusiasm of the Tiara Coupe series is the 39 Coupe. Classic Tiara styling and quality components highlight the exterior; modern interiors and architectural appointments await inside. With open and spacious floor plans that keep galley and cockpit engaged, every detail has been thoughtfully attended to. Ultraleather upholstery compliments the comfortable seating perfect for entertaining or dining. The airy atrium opens to the lower level and provides easy access to the utility room and VIP head.

Tiara's uncompromised quality and luxury combined with the latest in navigation and operating technologies make the Tiara 39 Coupe a perfectly sized and powerful package. Twin Volvo Penta IPS drives, paired with the dependable, sweet-riding Tiara hull, deliver an exceptional driving experience. The ergonomic helm with seating for two compliments the joystick controls and glass cockpit instrumentation with two displays that provide easy navigation and increase the enjoyment of your yachting experience. Settle in to a comfortable cruise at 30 MPH, or turn it up and enjoy that last dash into the inlet at a get to your destination faster at a WOT speed of 40 MPH.

SPECIFICATIONS

Basic Information

Manufacturer:	Tiara Yachts	Boat Type:	Motor Yacht
Model:	39 Coupe	Hull Material:	
Year:	2019	Hull Type:	
Category:	Power		

Dimensions & Weight

Length:	39.00 ft	Draft - max:	3 ft 4 in - 1.01 meter
LOA:	40 ft 10 in - 12.44 meter	Bridge Clearance:	13 ft - 3.96 meter
Beam:	13 ft 3 in - 4.04 meter	Dry Weight:	24320 ft
Deadrise Aft:	14.00 °		

Tank Capacities

Fuel Tank:	300 gallons - 1 tank(s)	Holding Tank:	38 gallons - 1 tank(s)
Fresh Water Tank:	100 gallons - 1 tank(s)		

Accommodations

Total Cabins:	-	Crew Cabins:	-
Total Berths:	-	Crew Berths:	-
Total Sleeps:	-	Crew Sleeps:	-
Total Heads:	-	Crew Heads:	-
Captains Cabin:	No		

FEATURES

STANDARD FEATURES

HULL AND DECK

- Tiara Yachts' transferable limited warranties: five (5) years on hull and deck; two (2) years on accessories. Exclusions apply - refer to 2018 warranty statement for specific details & coverage areas.
- Fresh white gelcoat hull and deck
- Axalta® solid painted bootline, Carbon
- Hull constructed with a gelcoat outer layer, balsa cored hullsides and hand-laid fiberglass using premium resin
- Deck constructed with a gelcoat outer layer, balsa core, and hand-laid fiberglass using premium resin
- Tiara custom diamond pattern non-skid deck & cockpit surfaces
- Deck side engine air intake system with built-in step for boarding
- Wood and foam core stringers, encapsulated by hand-laid fiberglass, are integrated to the hull
- Gelcoated bilge areas

- Bronze seacocks on all underwater thru-hull fittings
- Four (4) S.S. opening port lights with screens
- White poly rubrail with 316L S.S. cap
- Six (6) 12" S.S. cleats for lines
- Tiara custom composite hardtop, fiberglass windshield frame with tempered safety glass, safety handrails, & a windshield wiper system with two (2) washer/wipers. Hardtop includes manual sun roof.
- LED navigation & courtesy lights
- Two (2) Coats of Anti-fouling Bottom Paint

FOREDECK

- One (1) Bomar® extruded aluminum opening forward deck hatch w/ built-in Ocean Air® screens & privacy covers
- One-piece welded, 316L S.S. 1 1/4" bow rail, staff, & Tiara burgee
- Flush forward anchor locker with overboard drain
- Concealed Lewmar Pro Series 1000 automatic rope/chain anchor windlass system with Lewmar® handheld tethered deluxe remote control & a switch at helm. Includes one (1) 12" S.S. foredeck cleat, 40' chain rode, 200' rope rode, & 16 kg/35 lb. Lewmar® DTX stainless steel anchor.
- Windshield cover

TRANSOM AREA

- Dual transom entry doors with stainless steel frame & hardware
- S.S. grab rails on transom
- Transom storage compartment with fiberglass liner & one-piece actuated door . Dedicated storage with large opening to the trunk space.
- Two (2) 10" S.S. pop-up cleats
- 42" integrated swim platform with S.S. telescoping swim ladder
- Recessed transom shower, hot & cold water
- 120V GFI outlet

AFT COCKPIT

- Port and starboard cockpit aft facing seats with lined, insulated cooler storage below & drink holders
- Weather covers for cockpit seating
- Forward facing lounge
- Teak cockpit table with manual hi-lo pedestal bases
- Molded-in steps to deck walkways & swim platform. Safety handrails above deck walkway steps.
- Cockpit LED courtesy lighting with remote control
- See Salon and Helm Area for main stereo component details. Two exterior JL® Audio 7.7" speakers powered by a JL® Audio digital amp, and Fusion® remote.
- Raw and fresh water washdown outlets w/25 ft. coiled hoses

INTERIOR GROUP

- Architectural teak & wenge interior wood
- Solid teak floor in salon, lower atrium, and master stateroom. Risers in master stateroom are carpeted. Aft stateroom is carpeted.
- 120V outlets throughout
- 12V LED lighting throughout
- Six (6) throw pillows

SALON AND HELM AREA

- Manual sun roof

- Opening port and starboard side windows
- Aft window & sliding doors with duette blinds
- Duette blinds for port & starboard salon windows
- 28" LCD TV with Samsung® Blu-Ray DVD player
- Fusion® 3 zone system with wired remote. Powered by JL® Audio digital amp with four JL® Audio 4" speakers and Polk® 8" subwoofer with tuned enclosure. Accepts USB/MP3 and has integrated bluetooth.
- Marine Air Systems® 16,000 BTU salon air conditioning system
- Wide helm seat with electric fore & aft adjustment
- Port L-lounge with seating for four
- Leafing high gloss teak salon table
- Helm with drink holders, 12V and 120V outlets, & 17.5" leather-wrapped steering wheel
- Weather covers for helm console and cockpit seating

CENTRAL GALLEY

- Safety handrails
- Corian® countertops
- S.S. undermount sinks with hot/cold water faucet
- Recessed two-burner electric cooktop, exhaust fan, and backsplash
- Isotherm® 120V/AC drawer unit - drawer refrigerator on top with lower drawer freezer
- Microwave/convection oven
- Storage drawers below counter top
- Upper galley cabinet
- Trash can

ATRIUM

- Teak companionway steps
- Companionway handrail with rope LED lighting
- Storage and boat monitoring systems to port
- Marine Air Systems® 10,000 BTU air conditioning system for atrium and staterooms

MASTER STATEROOM

- Sliding teak door
- Solid teak floor with carpeted riser
- Queen size pedestal berth with deep quilted innerspring mattress, upholstered headboard, coverlet, & pillow shams
- Storage compartment below berth, manually actuated with gas springs
- Upper hullside cabinets, port and starboard
- Cedar-backed hanging locker
- Two (2) reading lights, independently switched
- Opening portlights for cross ventilation with privacy covers

MASTER/DAY HEAD

- Full frame teak door
- Fiberglass stall shower with sump pump and glass shower door
- Teak countertop with solid surface accents, vessel sink, hot/ cold water faucet
- Mirrors above sink
- Lower vanity storage
- VacuFlush® toilet
- Exhaust fan

- Air conditioning vent (controls in master stateroom)

AFT STATEROOM

- Full size berth with innerspring mattress, upholstered headboard, coverlet, and pillow shams
- Portside settee that can be used for additional sleeping capacity
- Hanging locker, port
- Carpeted floor
- Opening port with privacy cover
- Two (2) reading lights, independently switched

INSTRUMENTATION, SAFETY, AND EQUIPMENT

- Tiara custom 12V DC & 120V/240V AC electrical system with master distribution panels in the atrium
- One 240V AC 50 amp 65' dockside power cord
- Cable TV inlets/outlets with 65' dockside cord
- TV & AM/FM radio antennas
- Onan® 7.5kw diesel generator with sound shield & helm indicator
- Battery charger (1), 50 amp
- 12V three (3) bank battery system with batteries & remote battery switches. Four (4) engine batteries and three (3) house batteries
- Battery interconnect system
- Electrical bonding system
- Reverse polarity indicator
- Electronic engine controls & steering system
- Volvo® engine option includes trip computer software and cruise control
- Volvo® Glass Cockpit integrated electronics package with Volvo® engine option:

Volvo® Joystick Plus Control with Joystick Driving
 Two Volvo® /Garmin® 7612 12" displays with card reader
 Volvo® autopilot
 Garmin® 24 xHD dome radar with radar pedestal
 Garmin® VHF 210 AIS radio
 600w transducer

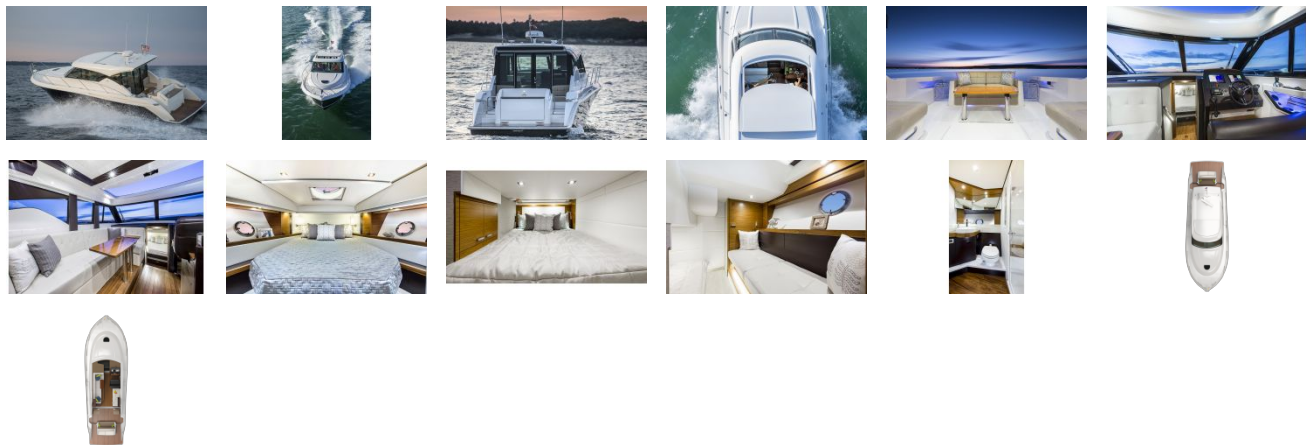
- Garmin® electronics package with Cummins® engine option:

Two Garmin® 7612 12" displays with card reader
 Garmin® autopilot
 Garmin® 24 xHD dome radar
 Garmin® VHF 210 AIS radio
 600w transducer

- Ritchie® SuperSport SS2000 compass
- Propellers
- Lenco® trim tabs
- Zinc Sacrificial Anodes
- Engine room with lighting and acoustical insulation
- Racor® fuel filters/water separators, engines & generator
- Raw water intake strainers, engines & generator
- Vibration mounts, engines & generator
- Plate mounted, thru-bolted engine system
- Indicator LED's for aft bilge pump, mid bilge pump, forward bilge pump, & generator

- Three (3) automatic/manual electric bilge pumps with monitors at helm, 2,000 GPH each; one (1) forward, one (1) mid & one (1) aft
- One (1) aluminum fuel tank, total capacity 300 gallons, with in-line fuel vent filters & fuel shut-off valves on top of tank
- Dockside water inlet, aft deck
- One (1) fresh water tank, total capacity 100 gallons
- One (1) holding tank, 38 gallons, with deck discharge & holding tank vent filter
- Fresh water tank/holding tank monitor
- Fresh water pressure system with ten (10) GPM pump
- One (1) water heater, 11 gallons
- Electric horn
- HFC-227ea agent automatic/manual fire extinguisher system for engine room
- Four (4) handheld fire extinguishers
- Carbon monoxide detectors & smoke detectors in all staterooms
- Six (6) 5/8" x 50' black dock lines
- Eight (8) Tiara life vests (domestic boats only)
- USCG safety & medical kit
- USCG/international LED navigation lighting
- NMMA certified using ABYC standards
- International certification options available (European CE and others)

GALLERY



Knoxville Yacht Sales
1914 Ridge Oak Lane
Knoxville, TN 37922
Phone: 865-381-1584