



**GSPS Marine**  
3807 Gulf Shores Parkway,  
Gulf Shores, AL, 36542  
Phone: 251-948-6748

# Tiara Yachts 53 Coupe

Boat Type: Motor Yacht



## OVERVIEW

A strong, sleek and elegant profile combined with an integrated hardtop and large, obstruction-free tempered, tinted windows add to the 53 Coupe's global styling. The salon and bridge deck with her 360 degree panoramic views open to the cockpit through sliding aft doors built with indoor/outdoor living in mind. Sophisticated interior appointments make entertaining and overnighting comfortable for captain and guests.

The Tiara 53 is powered by twin Volvo IPS II 950s with Joystick Plus control. The technologically advanced Volvo IPS power plants are matched to a successful ocean proven hull delivering a solid ride whether you're enjoying a calm day cruise or pushing the vessel to get you to your favorite island getaways far offshore.

## SPECIFICATIONS

### Basic Information

Manufacturer:	Tiara Yachts	Boat Type:	Motor Yacht
Model:	53 Coupe	Hull Material:	
Year:	2019	Hull Type:	
Category:	Power		

### Dimensions & Weight

Length:	53.00 ft	Draft - max:	4 ft 3 in - 1.3 meter
LOA:	54 ft 6 in - 16.61 meter	Bridge Clearance:	14 ft 7 in - 4.44 meter
Beam:	15 ft 11 in - 4.85 meter	Dry Weight:	42770 ft
Deadrise Aft:	15.00 °		

### Tank Capacities

Fuel Tank:	650 gallons - 1 tank(s)	Holding Tank:	86 gallons - 1 tank(s)
Fresh Water Tank:	150 gallons - 1 tank(s)		

### Accommodations

Total Cabins:	-	Crew Cabins:	-
Total Berths:	-	Crew Berths:	-
Total Sleeps:	-	Crew Sleeps:	-
Total Heads:	-	Crew Heads:	-
Captains Cabin:	No		

## FEATURES

### STANDARD EQUIPMENT

#### HULL AND DECK

- Tiara Yachts' transferable limited warranties: five (5) years on hull and deck; two (2) years on accessories. Exclusions apply - refer to 2018 warranty statement for specific details & coverage areas.
- Fresh white gelcoat hull and deck
- Axalta® solid painted bootline, Carbon
- Hull constructed with a gelcoat outer layer, balsa cored hullsides and hand-laid fiberglass using premium resin
- Deck constructed with a gelcoat outer layer, balsa and hand-laid fiberglass using premium resin
- Deck side engine air intake system with built-in step for boarding
- Bronze seacocks on all underwater thru-hull fittings
- Tiara custom diamond pattern non-skid deck & cockpit surfaces
- Wood and foam core stringers, encapsulated by hand-laid fiberglass, are integrated to the hull
- Gelcoated & fiberglass-lined bilge areas
- Molded in hullside windows with opening ports
- Poly rubrail with 316L S.S. cap
- Eight (8) 12" S.S. cleats for lines

- Tiara custom composite hardtop, aluminum windshield frame with tempered safety glass, safety handrails, & a windshield wiper system with three (3) washer/wipers. Hardtop includes powered sun roof.
- LED navigation & courtesy lights
- Two (2) Coats of Anti-fouling Bottom Paint

#### FOREDECK

- One (1) Bomar® extruded aluminum opening forward deck hatch with built-in Ocean Air® screens & privacy covers
- One-piece welded, 316L S.S. 1 1/4" bow rail, staff, & Tiara burgee
- Flush forward anchor locker with overboard drain
- Concealed Lewmar CPX3 automatic rope/chain anchor windlass system with Lewmar's handheld tethered deluxe remote control & a switch at helm. Includes one (1) 12" S.S. foredeck cleat, 40' chain rode, 200' rope rode, & 20 kg/44 lb. Lewmar® DTX stainless steel anchor.
- Windshield cover
- Recessed chaise lounge sun pad with cup holders and handholds. Upholstered in white vinyl and includes weather cover.

#### TRANSOM AREA

- Dual transom entry doors with stainless steel frame & hardware
- S.S. grab rails on transom
- Transom storage compartment with fiberglass liner & one-piece actuated door. Dedicated storage with easy access to items & large opening to trunk space
- Two (2) 10" S.S. pop-up cleats
- 70" integrated swim platform with telescoping S.S. swim ladder
- Recessed transom shower, hot & cold water
- Freshwater washdown outlet w/ 25ft coiled blue hose
- Raw water washdown outlet w/ 25ft. coiled hose
- 120V GFI outlet

#### AFT COCKPIT

- Storage with access in cockpit sole
- Molded-in forward facing lounge
- Teak aft cockpit table with ottomans
- Molded-in steps to deck walkways & swim platform. Safety handrails above deck walkway steps.
- Cockpit LED courtesy lighting with remote control
- Port and starboard cockpit aft facing seats with storage below starboard seat and cooler under port seat
- See Salon and Helm Area for main stereo component details. Two (2) exterior JL® Audio 7.7" component speakers, one (1) Polk Audio® 8" subwoofer, and Fusion® remote.
- Weather covers for cockpit furniture

#### INTERIOR GROUP

- Architectural teak & wenge interior wood with grain-filled finish & Chilewich® wall covering throughout
- Solid teak floor in salon, lower atrium, utility room, and VIP/forward stateroom. Master stateroom & risers in forward VIP stateroom are carpeted.
- Three skylights with built-in blinds
- 120V outlets throughout
- 12V LED lighting throughout
- Eight (8) throw pillows

#### SALON AND HELM AREA

- Powered sun roof
- Aft window & sliding doors with duette blinds
- Duette blinds for port & starboard salon windows
- 40" LCD TV mounted on a hi-lo actuator (concealed when not in use) & storage compartment. Includes Soundbar and Blu-Ray player.
- Fusion® UD750 multi-zone stereo system powered by JL Audio® M400 digital amp with four (4) JL Audio® interior speakers and one (1) Polk Audio® 8" subwoofer speaker with tuned enclosure.
- Marine Air Systems® 40,000 BTU salon air conditioning system
- Opening port and starboard side windows
- Stidd® captain's chair with vertical, fore, & aft adjustment. Includes Garmin® GRID armrest remote for standard electronics package.
- Companion chair that slides fore and aft with adjustable backrest for facing forward or aft
- Port L-lounge sofa with storage & high gloss teak table on actuated hi-lo pedestal. Seating for five.
- Helm with drink holders, 12V and 120V outlets, & 7.5" leather-wrapped steering wheel

#### CENTRAL GALLEY

- Safety handrails
- Quartz countertops
- S.S. undermount sinks with hot/cold water faucet
- Recessed three-burner electric cooktop, exhaust fan, and backsplash
- Dual Isotherm® 120V drawer units - one refrigerator/refrigerator and one refrigerator/freezer
- Microwave/convection oven
- Storage drawers below counter top
- Upper Galley Cabinets
- Waste receptacle

#### LOWER ATRIUM & UTILITY ROOM

- Storage room with linen closet and Splendide® Ariston™ 110V stackable washer/dryer

#### MASTER STATEROOM

- Private entrance to master stateroom and head
- Full beam master stateroom with hullside windows for natural lighting & blinds for windows. Opening ports for ventilation in master stateroom & head. Port side blind is electrically controlled.
- Carpeted floor
- Olympic queen pedestal berth w/pillowtop innerspring mattress, upholstered headboard, coverlet
- Storage compartment below berth manually actuated with gas springs
- Shelves, starboard side, fore & aft of headboard
- Port side lounge/settee
- Cedar-backed hanging locker
- Overhead indirect lighting
- Two (2) reading lights, independently switched
- Marine Air Systems® 16,000 BTU air conditioning system for master stateroom and master head.
- Samsung® 32" flat screen TV
- Samsung® Blu-Ray DVD player
- Four (4) JL Audio® 4" speaker with Fusion® remote

#### MASTER HEAD

- Full frame door with private master stateroom entry
- Fiberglass stall shower with sump pump, glass shower door, & teak seat. Overhead waterfall shower head.

- Teak countertop with solid surface accents, vessel sink, hot/ cold water faucet
- Lighted upper medicine cabinet with mirror
- Lower vanity storage
- Privacy shades for opening portlights
- Solid teak floor
- VacuFlush® toilet
- Exhaust fan
- Air conditioning vent (controls in master stateroom)

#### VIP STATEROOM

- Private entry to VIP head
- Solid teak floor with carpeted risers
- Queen size pedestal berth, splits to make double berths. Innerspring mattresses, upholstered headboard, coverlets, box pillows, and storage under the berths.
- Bi-fold entry doors
- Cedar-backed hanging locker, starboard
- Upper hullside cabinets, port & starboard
- Opening portlights (2) with privacy shades
- Opening deck hatch
- Two (2) JL Audio® 6.5" speakers with Fusion® remote
- VIP STATEROOM (CONTINUED)
- Two (2) reading lights, independently switched
- Marine Air Systems® 10,000 BTU air conditioning system

#### VIP/DAY HEAD

- Full frame doors with entry from VIP stateroom & atrium
- Fiberglass stall shower with sump pump, glass door, & teak seat
- Teak countertop with solid surface accents, vessel sink, hot/ cold water faucet
- Lighted upper medicine cabinet with mirror
- Lower vanity storage
- Solid teak floor
- VacuFlush® toilet
- Exhaust fan
- Air conditioning vent (controls in VIP stateroom)

#### INSTRUMENTATION, SAFETY, AND EQUIPMENT

- Tiara custom 12V/24V DC & 120V/240V AC electrical system with master distribution panels in the galley
- One 240V AC 50 amp 65&#39; dockside power cord with Glendinning® cable recoiler & adaptor for 30 amp service
- Cable TV inlets/outlets with 65&#39; dockside cord
- TV & AM/FM radio antennas
- Onan® 13.5kw diesel generator with sound shield & helm indicator
- Battery chargers (2), 100 amp & 40 amp (100 amp & 30 amp with Volvo® engine option)
- 12V/24V multiple bank battery system with batteries & remote battery switches. Four (4) engine batteries, six (6) house batteries, & two (2) bow thruster batteries (Cummins® engine option only)
- Electrical bonding system with Galvanic Isolator and ELCI Circuit Protection
- Electronic engine controls & steering system
- Volvo® engine option includes DPS (Dynamic Positioning System) low speed, cruise control, & trip computer software

- Standard Garmin® electronics package:

Two 7616 16" widescreen displays

Garmin® autopilot

GPS antenna

Garmin GSD24 sounder

Garmin® 604 HD 4 ft./6kw open array radar and pedestal installed on custom mast

Garmin® VHF300 & GHS10 handheld radios

1kw transducer

- Volvo® Glass Cockpit integrated electronics package (with Volvo® engines):

Two Volvo®/Garmin® widescreen displays with GRID armrest remote

Volvo® autopilot

GPS antenna

Joystick driving

Garmin® 604 HD 4 ft./6kw open array radar and pedestal installed on custom mast Garmin GSD24 Sounder

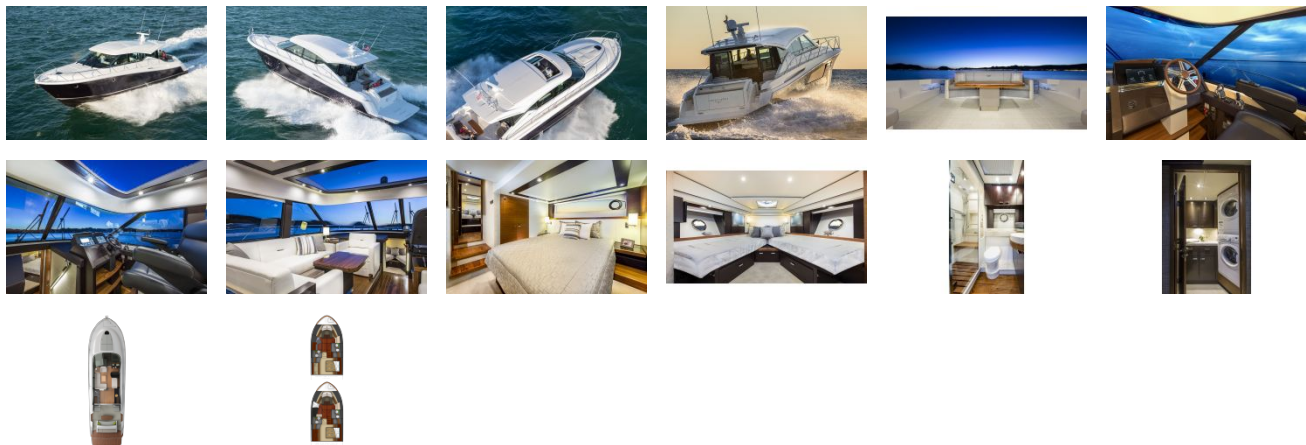
Garmin® VHF300 & GHS10 handheld radios

1kw transducer

- High output alternators, 115 amp
- Ritchie® SuperSport SS2000 compass
- Engine room with lighting and acoustical insulation
- Racor® fuel filters/water separators, engines & generator
- Propellers
- Trim tabs
- Zinc Sacrificial Anodes
- Raw water intake strainers, engines & generator
- Vibration mounts, engines & generator
- Plate mounted, thru-bolted engine system
- Three (3) port oil changing system, main engines & generator
- Three (3) automatic/manual electric bilge pumps with monitors at helm, 2,000 GPH each; one (1) forward, one (1) mid, & one (1) aft
- One (1) aluminum fuel tanks, total capacity 650 gallons, with in-line fuel vent filters & fuel shut-off valves on top of tank
- Dockside water inlets, aft deck & anchor locker
- Two (2) fresh water tanks, total capacity 150 gallons
- One (1) holding tank, 86 gallons, with deck discharge & holding tank vent filter
- Fresh water tank/holding tank monitor
- Fresh water pressure system with ten (10) GPM pump
- One (1) water heater, 20 gallons
- Kahlenberg® chrome dual trumpet air horn
- FE-227 agent automatic/manual fire extinguisher system for engine room
- Four (4) handheld fire extinguishers
- Carbon monoxide detectors & smoke detectors in all staterooms & salon
- Eight (8) 5/8" x 50' black dock lines
- Four (4) large fenders
- Dedicated storage for dock lines & fenders
- Eight (8) Tiara life vests (domestic boats only)
- USCG safety & medical kit
- USCG/international LED navigation lighting

- NMMA certified using ABYC standards
- International certification options available (European CE and others

GALLERY



**GSPS Marine**  
3807 Gulf Shores Parkway,  
Gulf Shores, AL, 36542  
Phone: 251-948-6748