



**DimillosYacht Sales**  
1 Long Wharf, Portland, ME 04101  
Phone: 207-773-7632

# Regulator 34SS

Boat Type: Sport Fishing



## OVERVIEW

The 34SS is what weekends are all about, designed to entertain with ease and pursue the offshore catch in comfort. Find relaxation and convenience at every turn with new starboard boarding and dive door, wraparound Starboard Seating, and sleeping berth with freshwater head and sink. Choose the optional Cockpit Galley with grill and refrigerator to enhance versatility, or the 3X Deluxe Livewell/Tackle Center to complete your strategically outfitted sportfisher. Either way, you'll have plenty of rod and tackle storage, huge forward fish/storage boxes, 350-gallon fuel tank, and the option for twin or triple Yamaha engines to bring your Regulator experience to the next level.

## SPECIFICATIONS

### Basic Information

Manufacturer:	Regulator	Boat Type:	Sport Fishing
Model:	34SS	Hull Material:	
Year:	2018	Hull Type:	
Category:	Power		

### Dimensions & Weight

Length:	34.00 ft	Draft - max:	3 ft 4 in - 1.01 meter
LOA:	33 ft 10 in - 10.31 meter	Bridge Clearance:	-
Beam:	10 ft 11 in - 3.33 meter	Dry Weight:	11315 ft
Deadrise Aft:	24.00 °		

### Tank Capacities

Fuel Tank:	350 gallons - 1 tank(s)	Holding Tank:	13 gallons - 1 tank(s)
Fresh Water Tank:	31 gallons - 1 tank(s)		

### Accommodations

Total Cabins:	-	Crew Cabins:	-
Total Berths:	-	Crew Berths:	-
Total Sleeps:	-	Crew Sleeps:	-
Total Heads:	-	Crew Heads:	-
Captains Cabin:	No		

## FEATURES

### STANDARD EQUIPMENT

#### Console

- SeaStar Solutions® Optimus Electronic Power Steering with Tilt Helm
- Yamaha CL7™ Touchscreen Display
- Ritchie Blue Face SuperSport Compass
- Marine Stereo with AM/FM/WB, SiriusXM® Ready with Bluetooth and (4) Premium Speakers
- EZ-View Flushmount Electronic Mounting Face with Access in Head Compartment
- Quad Battery System with Switches and Marine Batteries
- 40 Amp Battery Charger with 50' Power Cord
- Frameless Tempered Glass Windshield
- Glove Box with Fiberglass Lid
- Edson™ Polished Silver Wheel with Power Knob
- Frameless Fiberglass Integrated Console Door
- USB Charging Ports

#### Console Interior

- CO Detector
- Vented Port Light in Console
- Courtesy LED Lights
- Bilge High Water Alarm
- Sleeping Accommodations for Two Complete with Reading Lights
- Stand-Up Head Compartment with Solid Surface Counter Top, Hand-Held Shower, Polished Stainless Steel Sink with Storage Below, Interior Lighting, and Mirror
- Electric Head with 13 gal. Holding Tank
- Rod Racks for up to 11 Rods

## **Deck & Cockpit**

- 360° Coaming Pads
- Stainless Steel 14x18 Trim Tabs with Indicator Switch
- Pull Up Bow Cleats
- Stainless Steel Hardware Through-Bolted with Elastic Stop Nuts
- Molded Non-Skid Horizontal Surfaces
- Engine Bracket with Integrated Telescoping Ladder
- 368 qt. Forward Center Dry Storage Compartment
- Forward Deck Anchor Locker with Rope Storage
- Stainless Steel Scuppers
- Below Deck Bulk Cockpit Storage Compartment
- Starboard Boarding and Dive Door with Removable Folding Ladder
- USB Charging Ports in Forward Seating Area

## **Fishing Equipment**

- 7' Insulated Rod Storage Under Starboard Seating
- 6' Port Side Insulated Cooler Box/Rod Storage
- 31 gal. Freshwater System with Wash Down and Transom Shower
- Insulated Illuminated Transom Fishbox
- Insulated Illuminated Transom Livewell
- Saltwater Wash Down and Livewell Plumbing
- Stainless Steel Rod Holders (4) lumbing
- Stainless Steel Rod Holders (4)

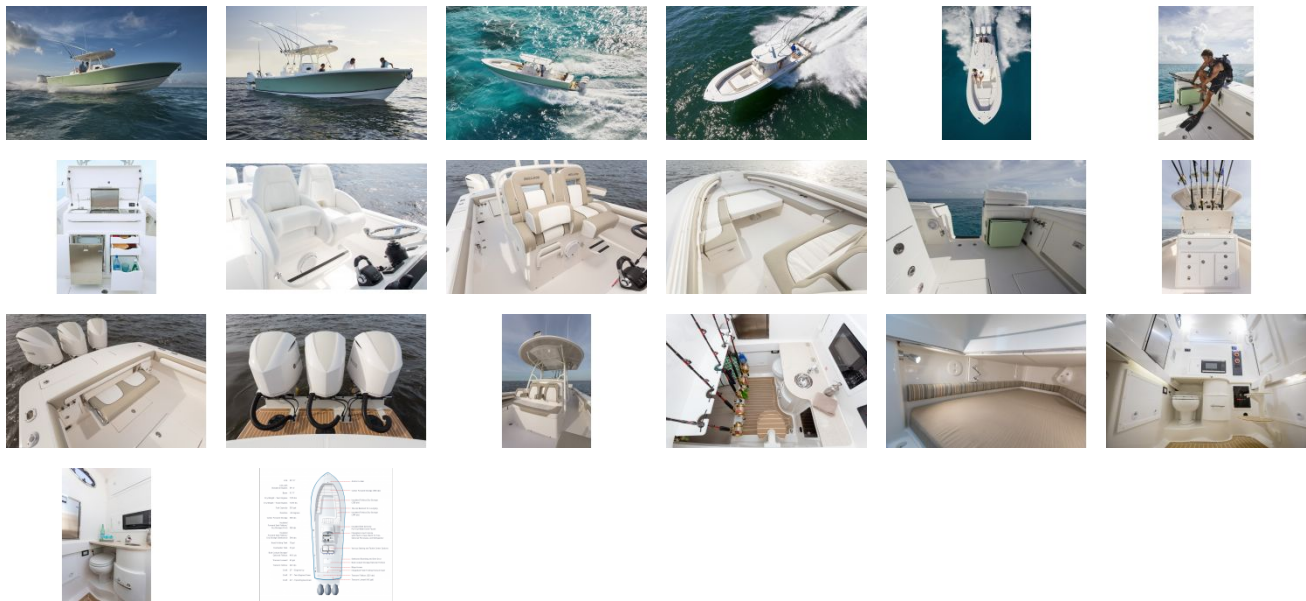
## **Seating**

- Forward Seating with Flip-Up Backrest (Port Side)
- Upholstered Forward Console Seating for Two and Wraparound Starboard Seating
- 3X Deluxe Tackle Center: Upholstered Console Seating for Two with Armrests with Cup Holders and Flip-Up Bolster with Individual Folding Footrests with SoftGrip Foot Rail; Seatback with Cup Holders and Rocket Launcher; (6) Medium Plano Trays; and (2) Tackle Drawers in Cabinet
- Integrated Flush Folding Transom Seat

## **Power Options**

- Twin Yamaha F350 4-Stroke Engines with Digital Electronic Controls
- Twin Yamaha F350 4-Stroke Engines with Digital Electronic Controls and Yamaha Helm Master® with Set Point™
- Triple Yamaha F300 4-Stroke Engines with Digital Electronic Controls
- Triple Yamaha F300 4-Stroke Engines with Digital Electronic Controls and Yamaha Helm Master® with Set Point™

GALLERY



**DimillosYacht Sales**  
1 Long Wharf, Portland, ME 04101  
Phone: 207-773-7632